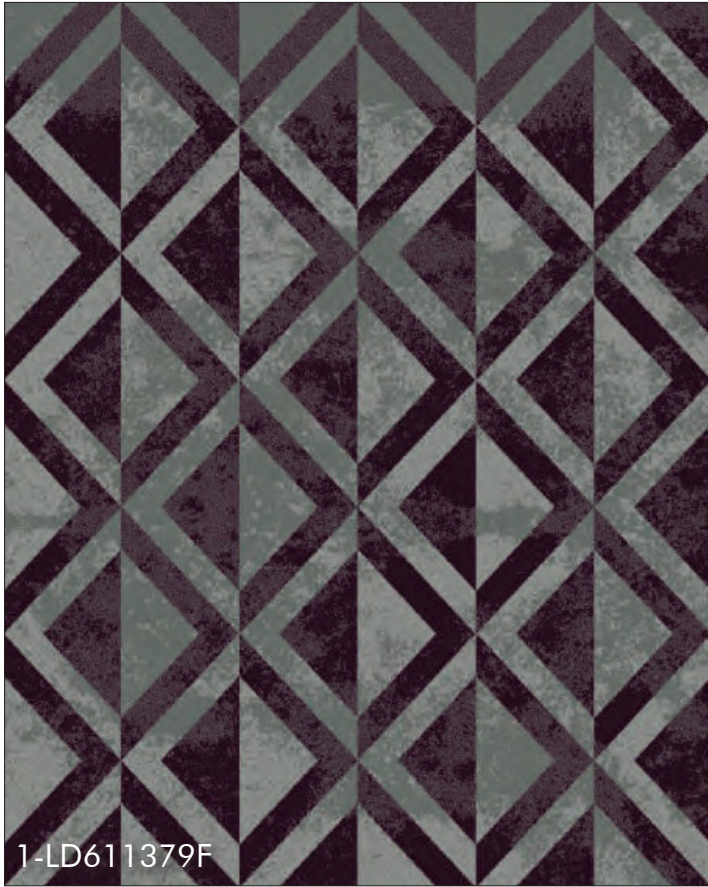


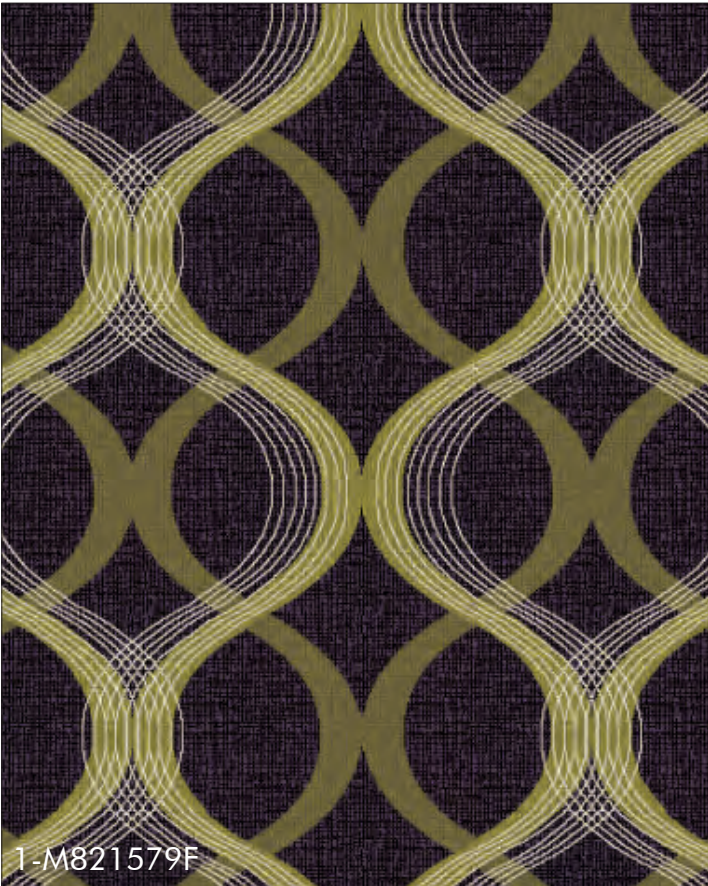
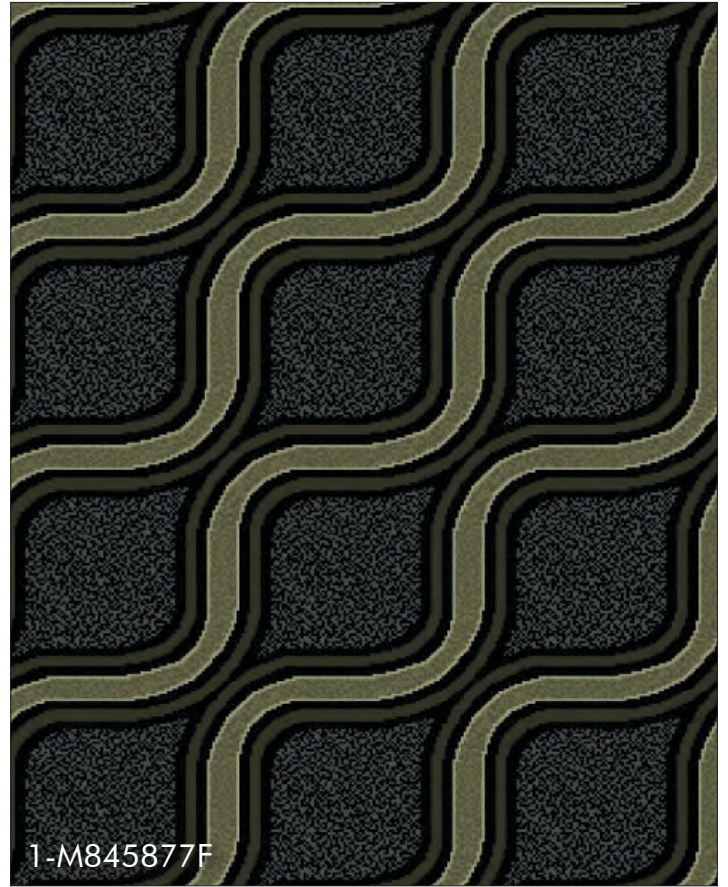


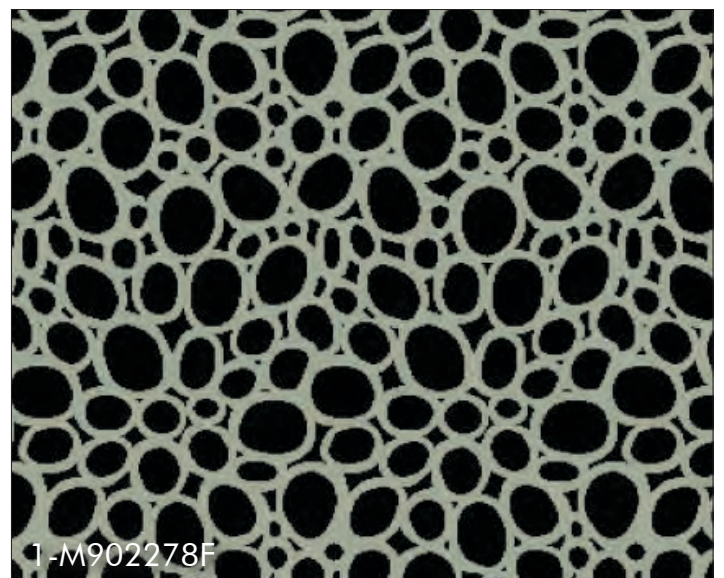
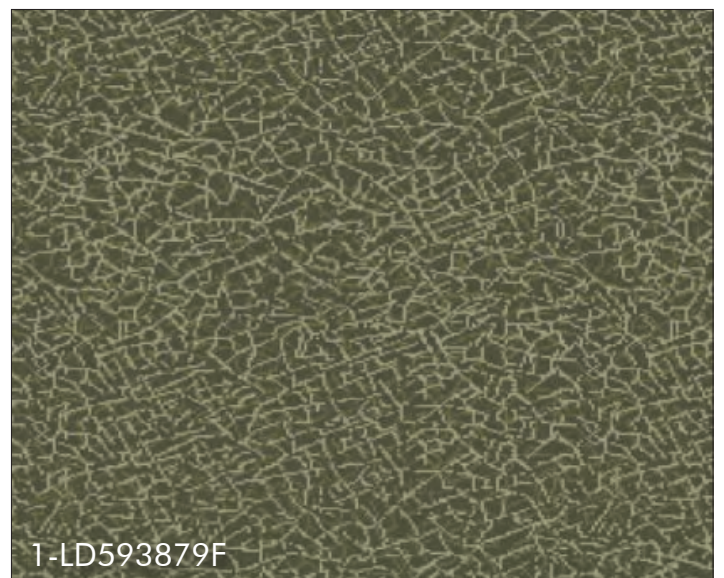
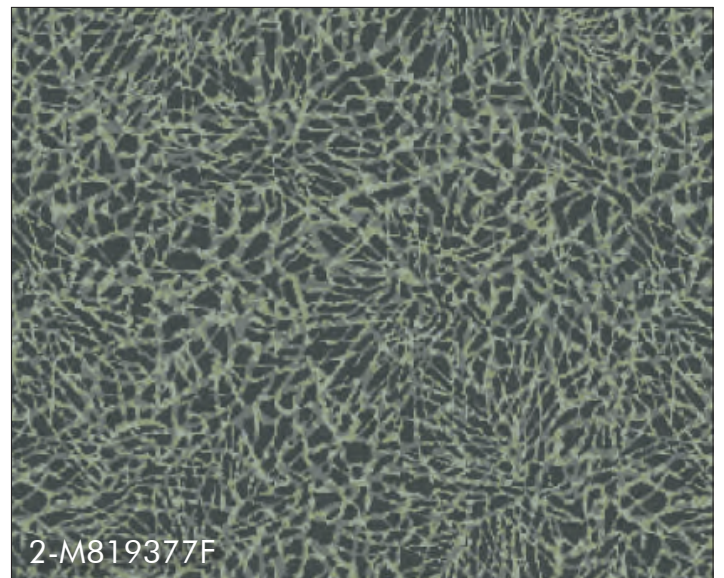
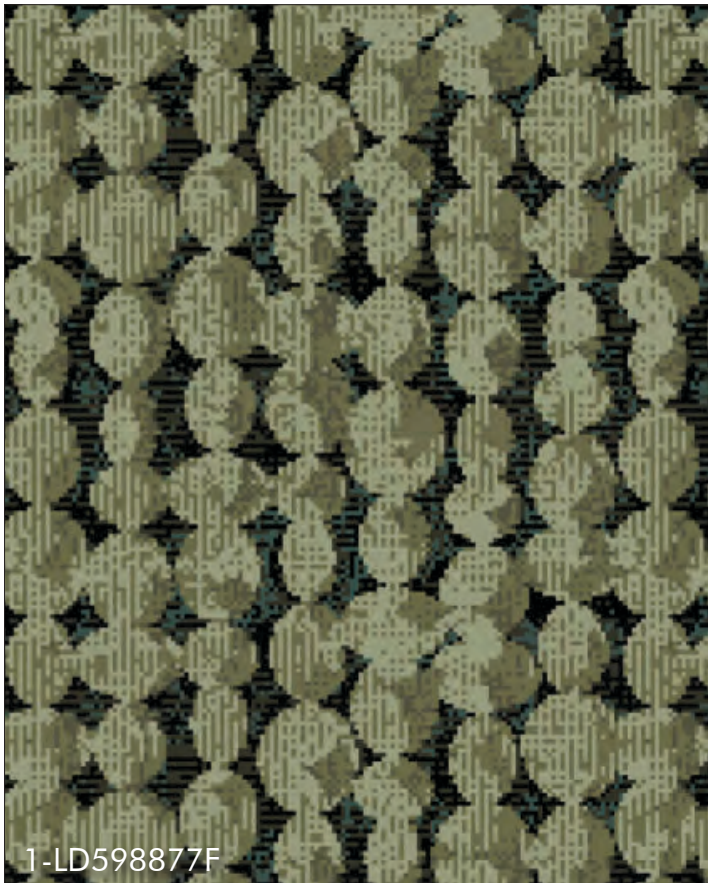
DESIGN COLLECTION 2016

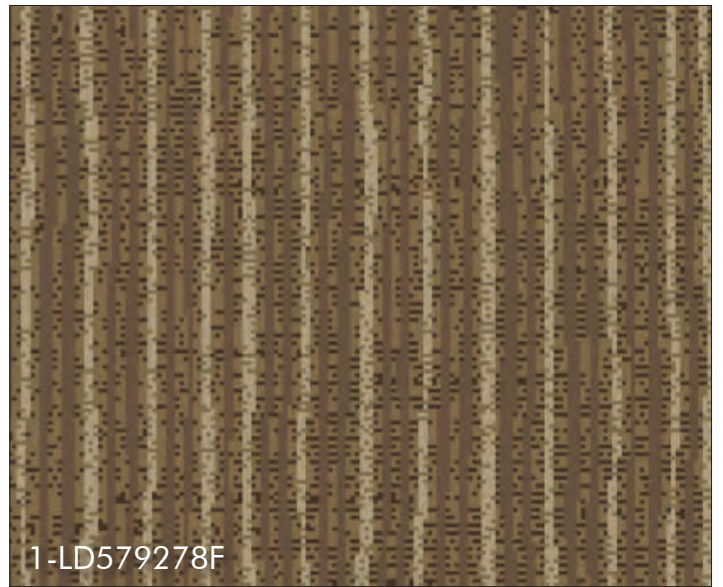
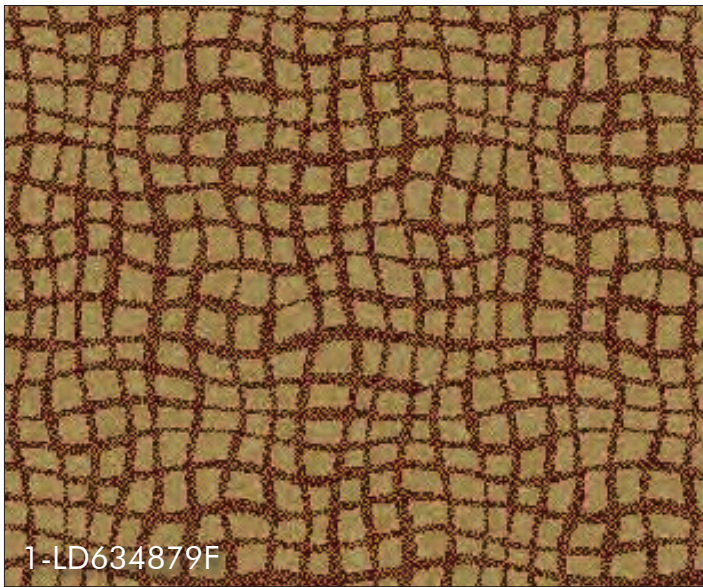
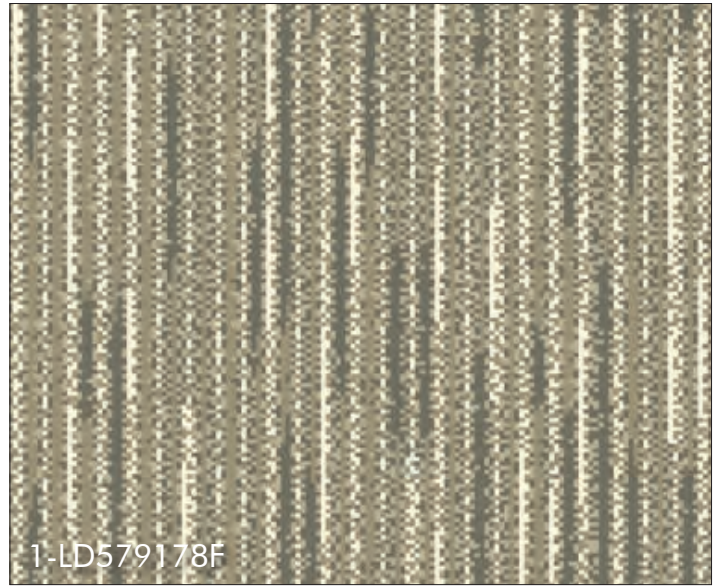
gaskell
Mackay

HERITAGE, BEAUTY, SERVICE
www.gaskell.co.uk

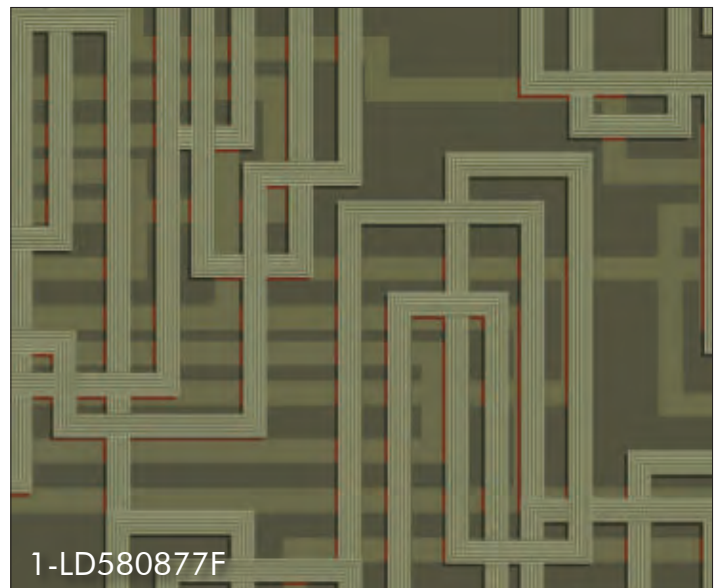


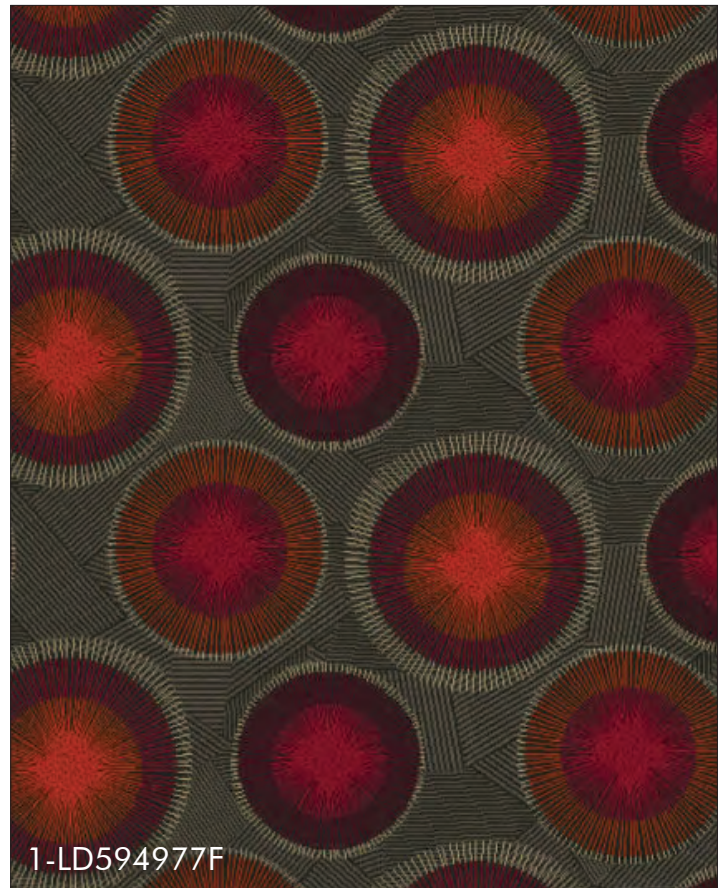


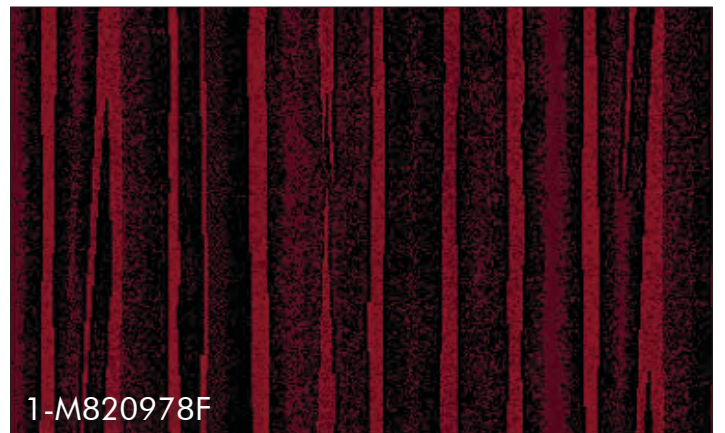


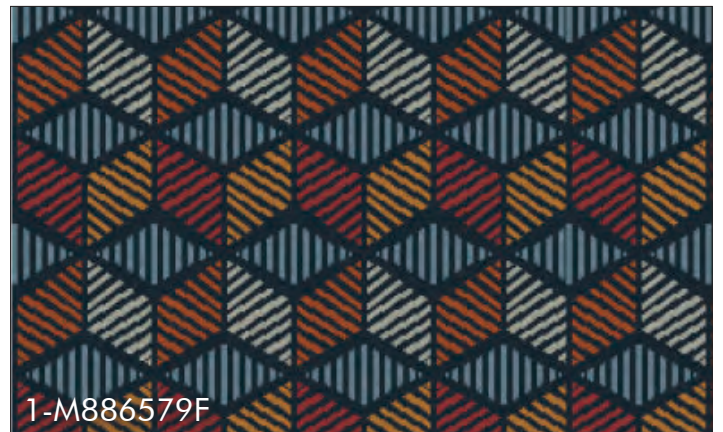
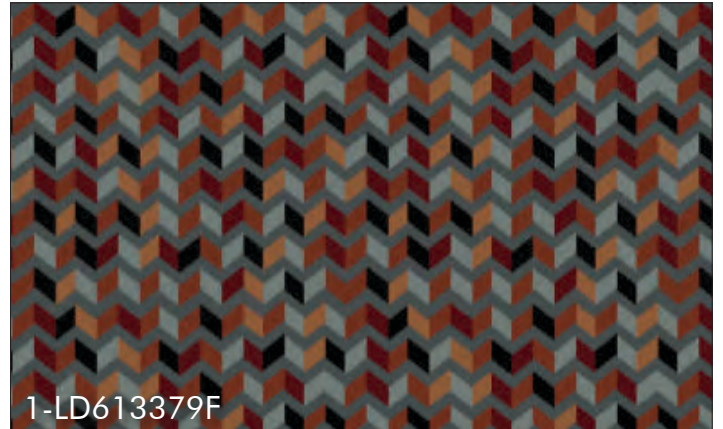
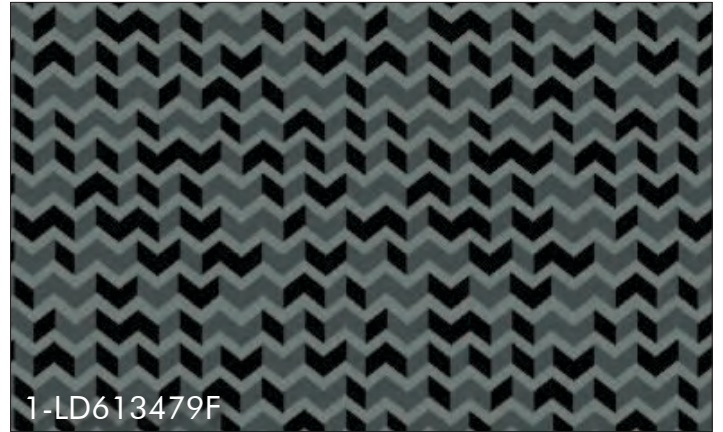


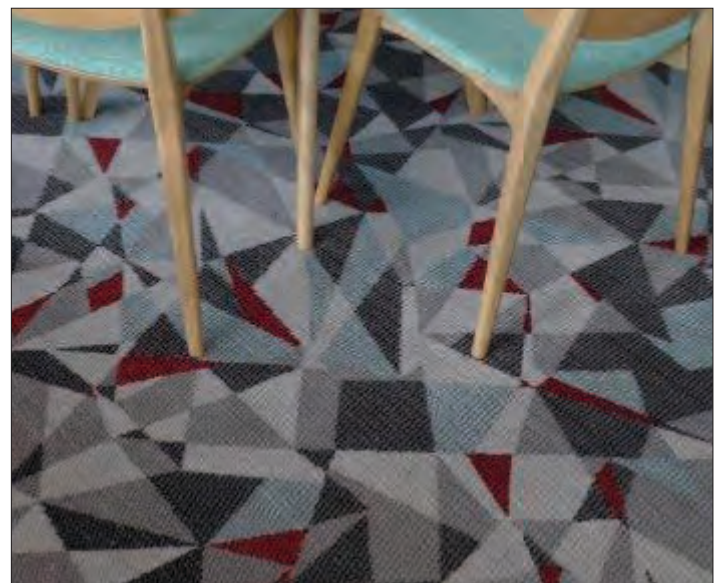
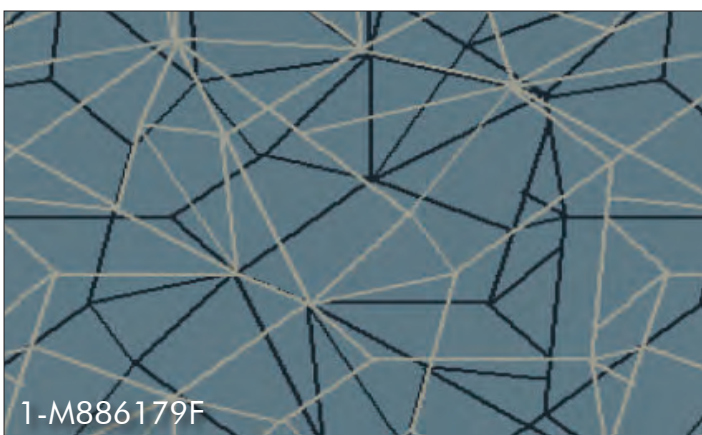
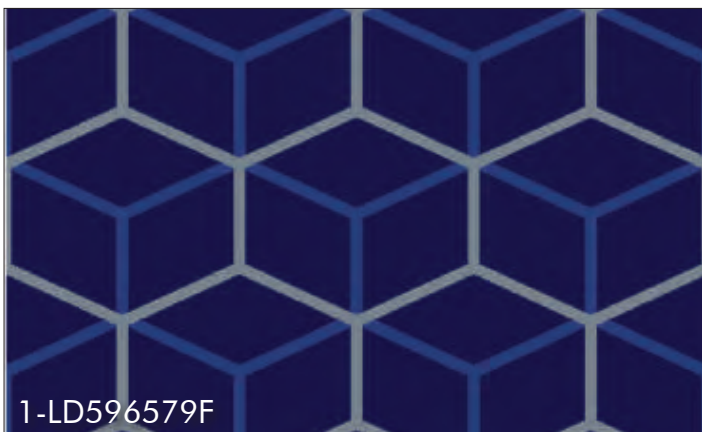
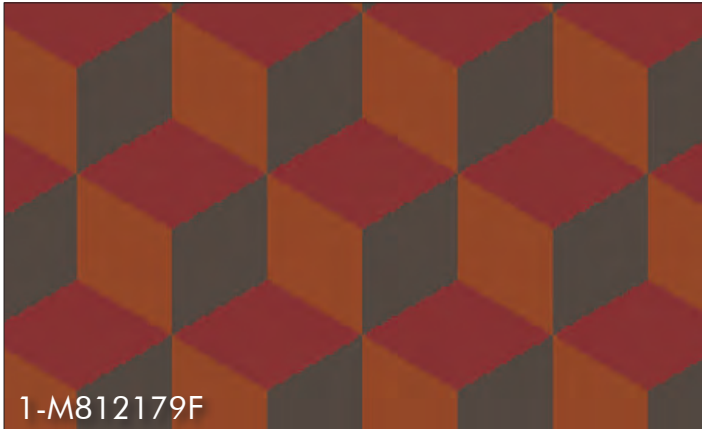


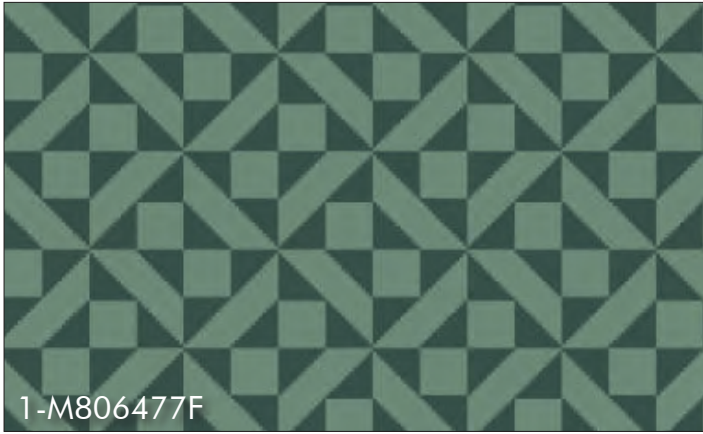




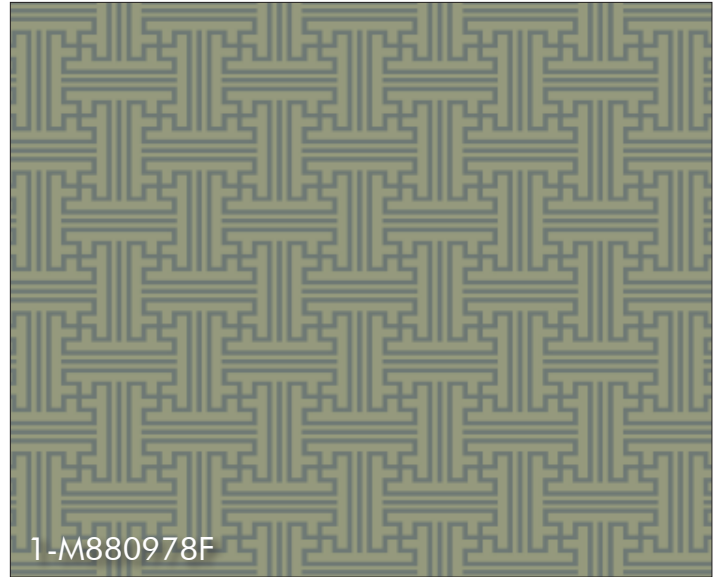








1-M806477F



1-M880978F



1-M824477F



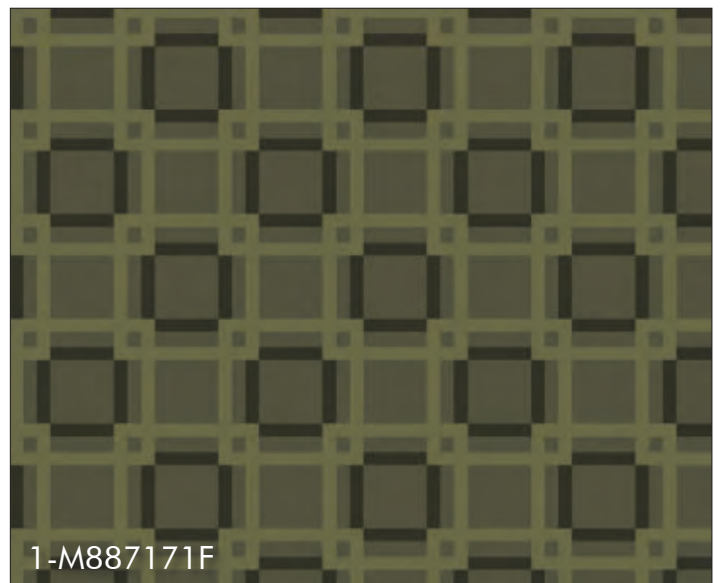
1-M858079F



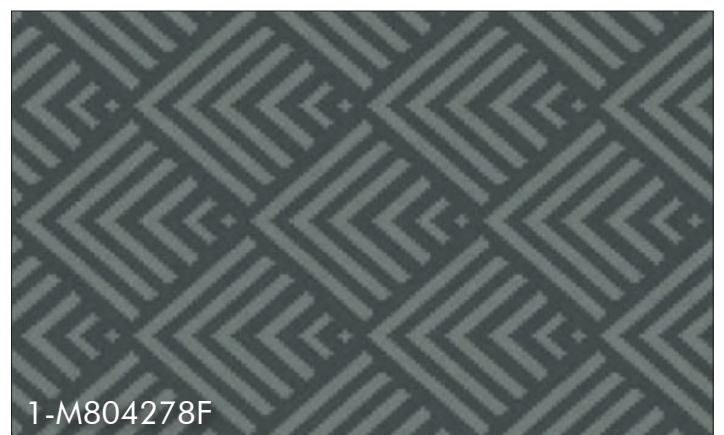
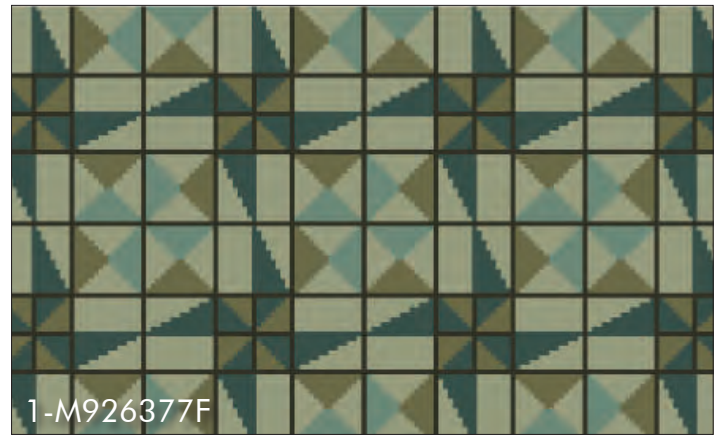
1-M822477F

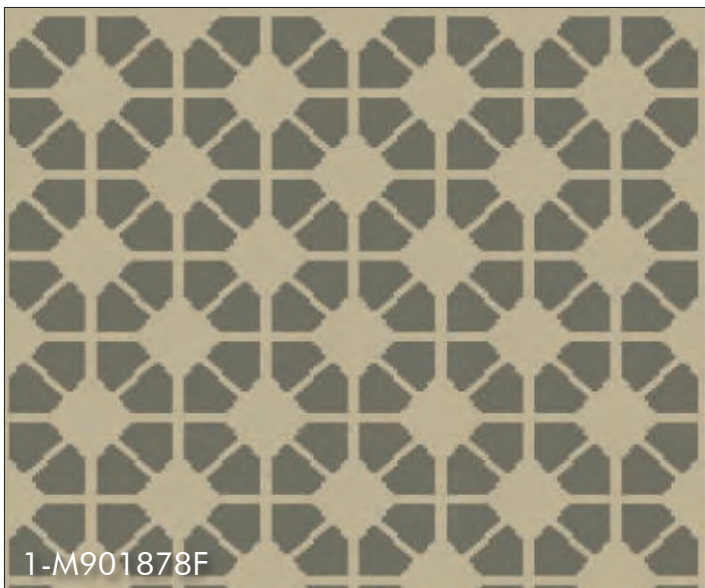
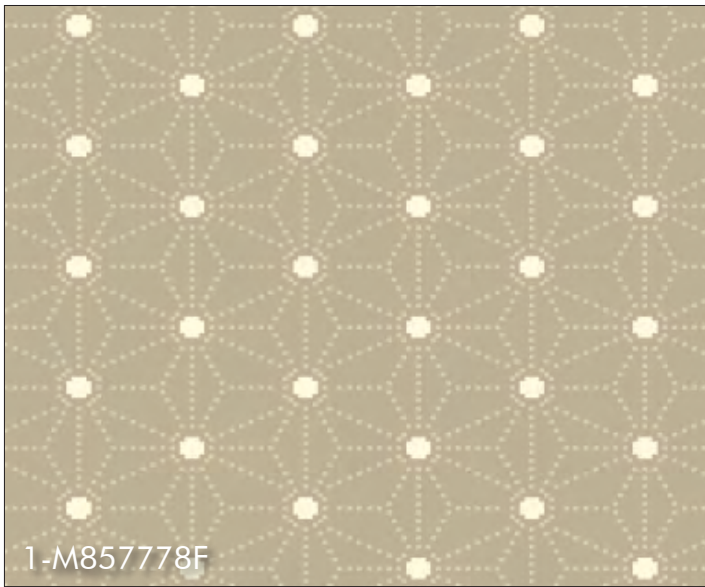
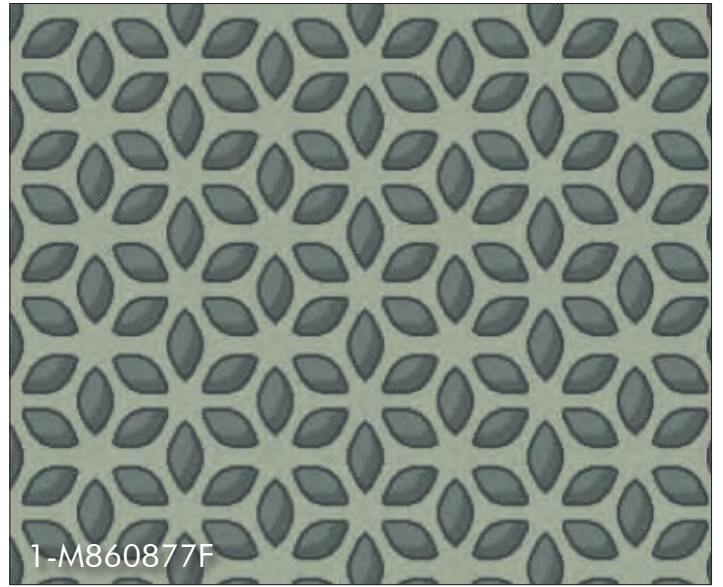


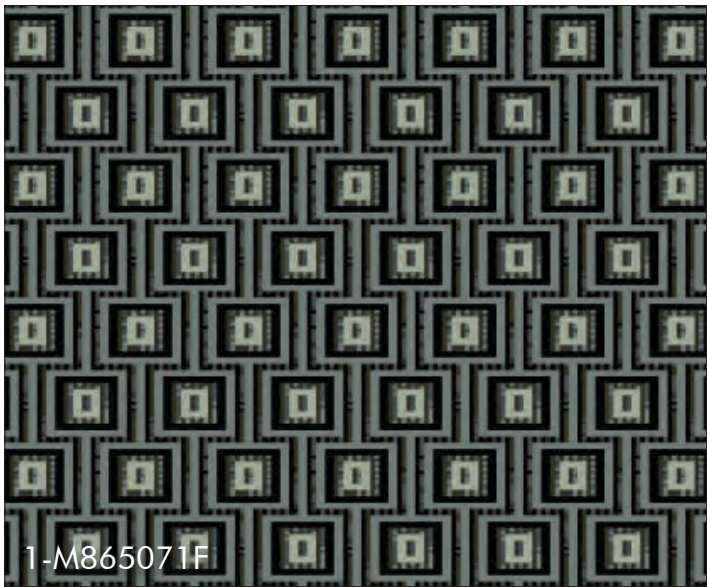
1-M841977F

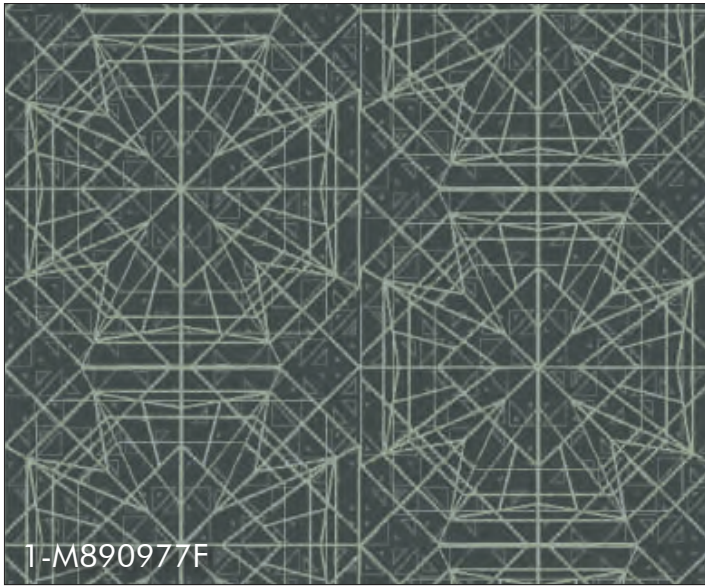


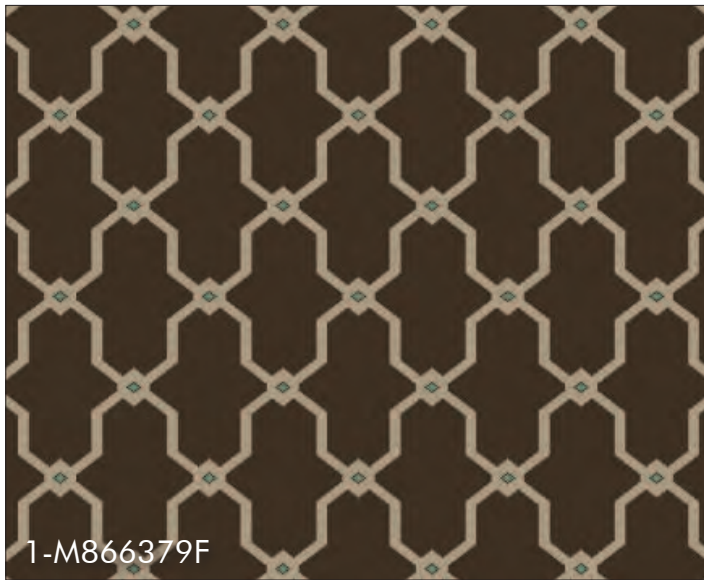
1-M887171F











SPECIFICATIONS & MAINTENANCE

General Specification Details

Design Collection 2016

Quality	Pitch (per inch)	Row (per inch)	Pile Weight (g/msq)	Width (m)	Appearance Class	Luxury Rating
Windermere	7	6	920	4	23/32 - General Commercial	LC3
Derwent	7	7	1070	4	33 - Heavy Commercial	LC4
Grassmere	7	8	1225	4	33 - Heavy Commercial	LC4
Coniston	7	9	1380	4	33 - Heavy Commercial	LC4
Ullswater (spike resist)	7	10	1530	4	33 - Heavy Commercial	LC4

Samples

Samples of all the designs and colourways illustrated can be produced in the form of "Kibby" carpet samples (to represent colour and design only). These are usually available within 72 hours. Please note that whilst every effort is made to accurately replicate designs in a Kibby format, this is not fully representative of the finished woven product. Some allowance therefore must be made to take account of the visual differences which may occur depending on the design selected and the quality produced.

Quality Selection

The qualities detailed represent specifications which should satisfy most commercial requirements. With each particular installation, the decision on which quality is most appropriate will depend on the levels of traffic, colour and design as well as the length of time the carpet is expected to be installed.

Gaskell Mackay have many years experience in these considerations and can provide detailed advice on quality selection on a project by project basis.

Planning and Estimation Service

Using the latest Callidus planning software, Gaskell Mackay can accurately estimate carpet requirements from site plans to any scale. Accurate estimations can be calculated and adjustments made to minimise wastage. One critical area of importance is seam placement. Knowledge of customer flow through the building is used to guide the installer in the careful positioning of seams to avoid premature wear.

General Installation Recommendations

All patterned carpets should be installed in accordance with BS5325:2001 Installation of Textile Floor coverings and NICF Manual detailing industry best practice.

General Maintenance Recommendations

Gaskell Mackay recommend that this carpet is maintained in accordance with an agreed maintenance schedule which should include the following:

- Vacuum regularly •
- Remove spills immediately •
- Professionally clean as required •

Pile Reversal

All cut pile carpets can suffer from pile reversal and in certain instances this may become permanently bent or distorted for no specific reason that research has yet identified, giving areas of light and shade. This is also described as "shading" or "watermarking". It is not a defect in manufacture; it only occurs in a small percentage of all carpets and no liability whatsoever can be accepted by the manufacturer in respect of it.

Pile Pressure

All cut pile carpets are liable to show light and dark patches resulting from disturbance of the pile created by foot traffic or brushing. This is a normal feature and is not a defect in manufacture and no liability whatsoever can be accepted by the manufacturer in respect of it.

The design is copyright of Gaskell Mackay and may not be reproduced without their written permission. Due to the limitations of the printing process, we are unable to guarantee an exact colour reproduction of these designs. Gaskell Mackay reserve the right to change any of the specifications without prior notice.

E.O.E. © Gaskell Mackay Carpets Limited 2010.

HERITAGE, BEAUTY, SERVICE



Gaskell Mackay Carpets Ltd
View Logistics, ParkView Road East,
Hartlepool, TS25 1HT
Tel: 01429 892525 Fax: 01429 892530
Email: sales@gaskell.co.uk
Website: www.gaskell.co.uk