

# NATURALS COLLECTION



“The Naturals Collection combines the best nature has to offer with state-of-the-art manufacturing to create a truly exceptional range of floorcoverings.”

The Naturals Collection is manufactured using 100% wool produced by blending together various undyed fibres from several different breeds of British sheep including; Swaledale, Cheviot, Scottish Black Faced and Herdwick.

The range is available in 4 qualities, Esk, Eden, Gowan and Leven and is created by combining a number of completely natural, undyed heather shades. The range is further environmentally friendly due to the carpet backing being made from jute and cotton. The latex used in the backing is also 100% natural.

This collection provides the most environmentally friendly route to manufacturing a carpet, minimising the negative environmental effects that can sometimes be produced during normal manufacture. The collection has complete design and colour flexibility within the natural palette of 8 shades, providing an attractive and ecologically friendly route to carpet manufacture.

#### COLOUR PALETTE



M0946



4m wide

101.6cm self match

M1063

stocked in 7x8



4m wide

self match

M1065

stocked in 7x8



4m wide

self match

M1064

stocked in 7x8



4m wide

self match

I/242445



4m wide

50.1 cm self match

I/222130



4m wide

17.8cm self match

I/210518



4m wide

57.1cm self match

I/222129



4m wide

22.8cm self match

I/222115



4m wide

24.5cm self match

1/230237



4m wide

19.3cm self match

1/220077



4m wide

91.4cm self match

2/230237



4m wide

19.3cm self match

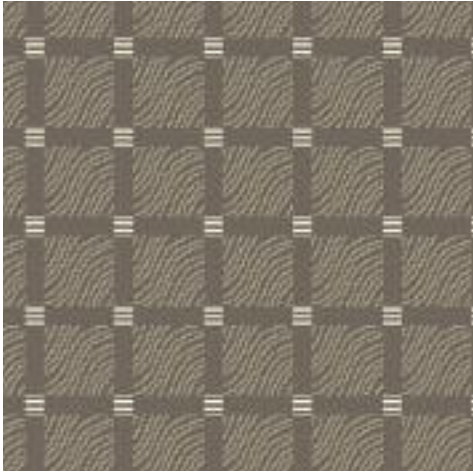
2/220077



4m wide

91.4cm self match

1/222144



4m wide

15.2cm self match

2/222144



3/222144



4/222144



4m wide

15.2cm self match

1/221819



4m wide

19.3cm self match

2/221819



3/221819



4/221819



4m wide

22.8cm self match



1/222692



4m wide

91.4cm self match

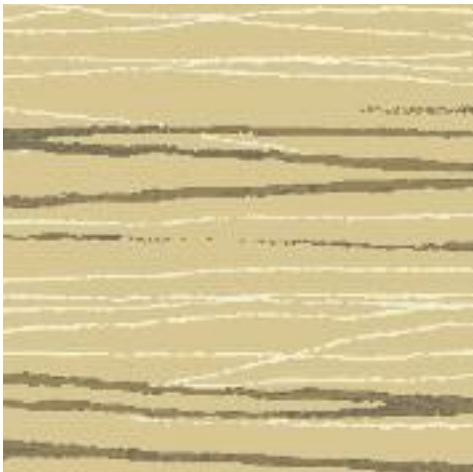
1/222213



4m wide

91.4cm self match

2/222692



4m wide

91.4cm self match

1/222153



4m wide

30.4cm self match



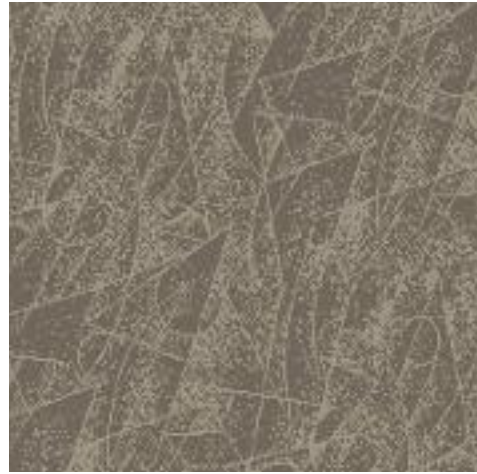
I/201209



4m wide

81.3cm self match

2/201209



4m wide

81.3cm self match

I/222414



4m wide

91.4cm self match

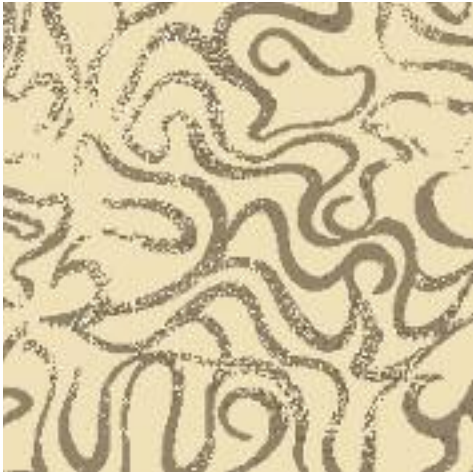
M0948



4m wide

91.4cm self match

I/222181b



4m wide

91.4cm self match

MORIO Dark Beige



4m wide

124.4cm self match

I/230288



4m wide

122.9cm self match

I/201849



4m wide

91.4cm self match



POSY



4m wide

100cm self match

1/M1078



4m wide

71.1cm self match

2/M1078



4m wide

71.1cm self match

I/200953



4m wide

91.4cm self match

I/A066



4m wide

72.6cm self match

2/A066



4m wide

72.6cm self match

3/A066



4m wide

72.6cm self match

1/210267



4m wide

80cm self match

2/210267



4m wide

80cm self match

3/210267



4m wide

80cm self match



I/242695



4m wide

91.4cm self match

M1052



4m wide

86cm self match

M1053



4m wide

86cm self match

M1054



4m wide

86cm self match

M1058

stocked in 7x8



4m wide

100cm self match

M1071

stocked in 7x8



4m wide

46cm self match

M1070

stocked in 7x8



4m wide

46cm self match

M1057

stocked in 7x8



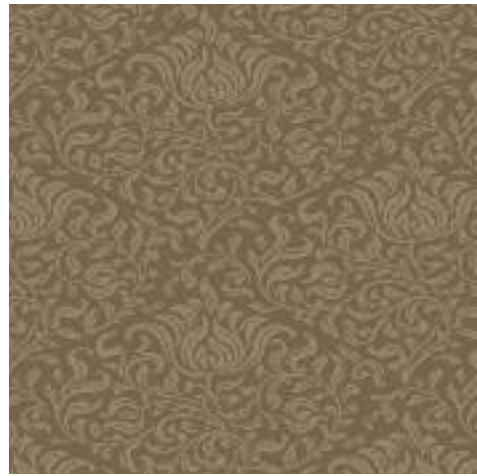
4m wide

100cm self match





**1/222315**



4m wide

45.7cm self match

**2/222315**



4m wide

45.7cm self match

**3/222315**



4m wide

45.7cm self match

1/972033



4m wide

82.3cm self match

2/972033



4m wide

82.3cm self match

3/972033



4m wide

82.3cm self match





I/242902



4m wide

30.4cm self match

2/242902



4m wide

30.4cm self match

I/220670



4m wide

30.4cm self match

1/220213



4m wide

15.2cm self match

2/220213



4m wide

15.2cm self match

3/220213



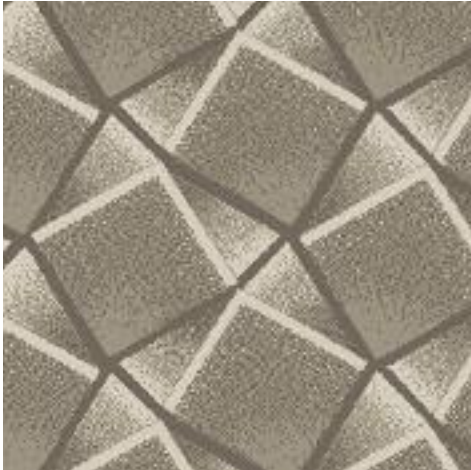
4m wide

15.2cm self match





I/222105



4m wide

87.9cm self match

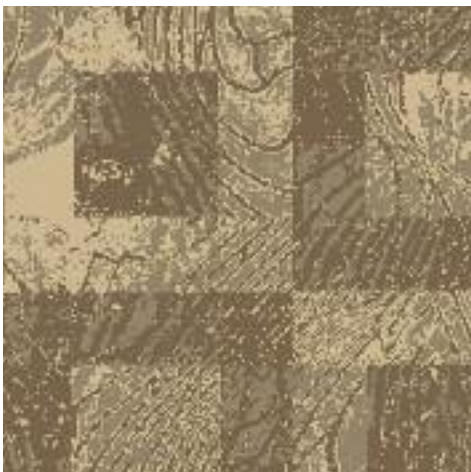
I/222205



4m wide

45.7cm self match

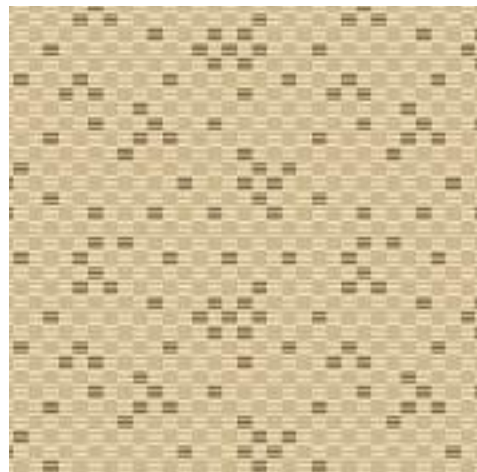
M1082



4m wide

100cm self match

I/222155



4m wide

45.7cm self match



M1101

stocked in 7x8



4m wide

91.4cm self match

I/221449



4m wide

91.4cm self match

M1100

stocked in 7x8



4m wide

9.41cm self match

4/G5999



4m wide

91.4cm self match



M1060

stocked in 7x8

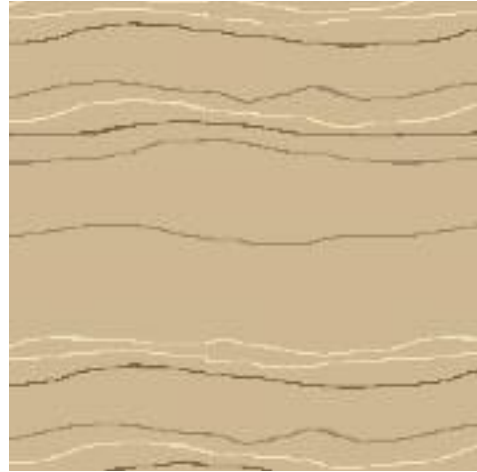


4m wide

34cm self match

M1061

stocked in 7x8



4m wide

59cm self match

M1059

stocked in 7x8

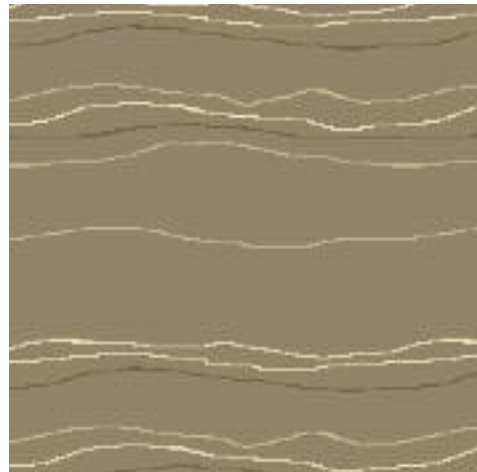


4m wide

34cm self match

M1062

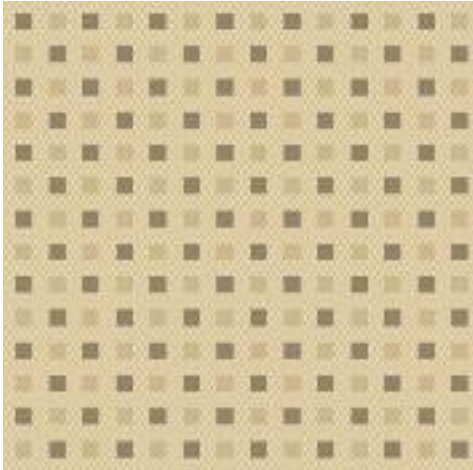
stocked in 7x8



4m wide

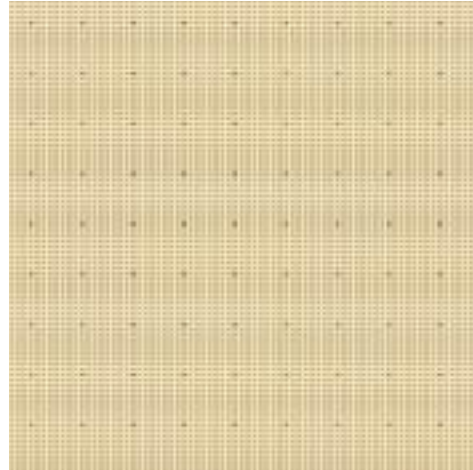
59cm self match

M1098 stocked in 7x8



4m wide 11.5cm self match

M1096 stocked in 7x8



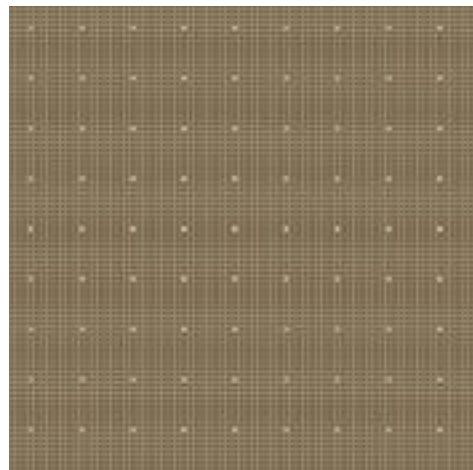
4m wide 8.5cm self match

M1099 stocked in 7x8



4m wide 11.5cm self match

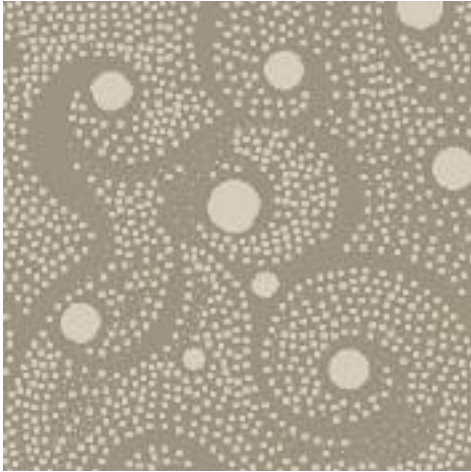
M1097 stocked in 7x8



4m wide 8.5cm self match



I/LW0106



4m wide

118.4cm self match

M0920



4m wide

91.4cm self match

M0915



4m wide

70.1cm self match

I/222604



4m wide

91.4cm self match

I/210911



4m wide

137.1cm self match

I/221771



4m wide

91.4cm self match

I/202281



4m wide

121.9cm self match

I/230067



4m wide

88.9cm self match

M1046



4m wide

71.1cm self match

3/G4076



4m wide

38.1cm self match

1/981624



4m wide

102cm self match



I-MI99078F



I-MI99177B



I-M200077F



I-M200177F



I-M200777F



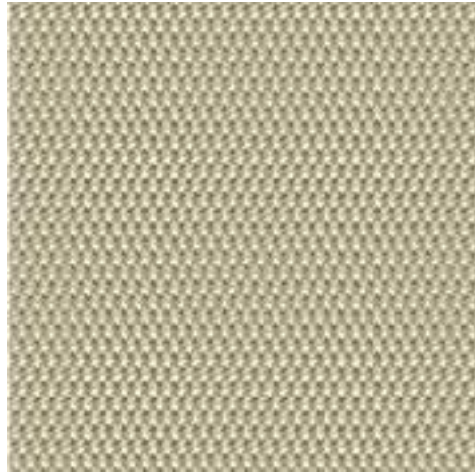
I-M200877F



I-M200977F



I-M201077F



I-M201177B



I-M201277F



LW073777F





## STANDARD & TONES PALETTES

2ply/42's (R740 tex), 80% wool/20% nylon

Quality	Pitch (per inch)	Row (per inch)	Pile weight (grams per m <sup>2</sup> )	Width (m)
Windermere	7	6	952	4
Derwent	7	7	1113	4
Grasmere	7	8	1270	4
Coniston	7	9	1428	4
Ullswater	7	10	1589	4
Warp & weft materials: Polypropylene & Polyester				

## SPECTRUM PALETTE

2ply/47's (R660 tex), 80% wool/20% nylon

Quality	Pitch (per inch)	Row (per inch)	Pile weight (grams per m <sup>2</sup> )	Width (m)
Comfort	7	6	920	4
General	7	7	1070	4
Special	7	8	1225	4
Splendid	7	9	1380	4
Exclusive	7	10	1530	4
Warp & weft materials: Polypropylene & Polyester				

## NATURALS PALETTE

2ply/47's (R660 tex), 100% undyed wool

Quality	Pitch (per inch)	Row (per inch)	Pile weight (grams per m <sup>2</sup> )	Width (m)
Esk	7	7	1070	4
Eden	7	8	1260	4
Gowan	7	9	1400	4
Leven	7	10	1580	4
Warp & weft materials: Jute & Cotton				

\*all figures quoted are average values and subject to industry manufacturing tolerances.

**INSTALLATION:**

in accordance with good practices described in the NICF Carpet Installation Manual and BS5325:2001.

**SHADING:**

All pile carpets are liable to shading – that is to show light and dark patches arising from unequal crushing of the pile surface. The degree to which a carpet shades is in the main determined by its colour and design. No amount of care during manufacture can completely eliminate shading but the effect can be minimised by regular vacuuming. Light and delicate carpets are liable to become soiled with wear.

**PILE REVERSAL:**

All pile carpets can suffer from pile reversal – a phenomena that may occur in certain areas and for no apparent reason. Present research has identified no specific cause. It may show as areas of dark and light patches. This may occur on certain colours and design styles and is not a manufacturing defect.

**FADING:**

The ultra violet rays of the sun can be very damaging to a carpet, particularly light and delicate shades, which may bleach in ordinary daylight. In addition oxygen can have the effect of whitening lighter wool shades, thereby potentially altering the appearance of the colours in the design. In the event of carpet being installed in areas of direct or strong sunlight it is advisable to shield the carpet by use of protective blinds to prevent fading.

**STAIRS:**

Local conditions generally dominate the performance of a carpet on stairs. However, periodical moving of the carpet over nosings is strongly recommended in order to spread the wear. Fitting should be in accordance with BS5325:2001.

**CARE & MAINTENANCE:**

We can provide recommendations on request.

All designs included within this book are the copyright of the Whitestone Weavers group, including Gaskell Mackay Carpets Ltd, and may not be reproduced without their written permission.

Made in E.E.C.