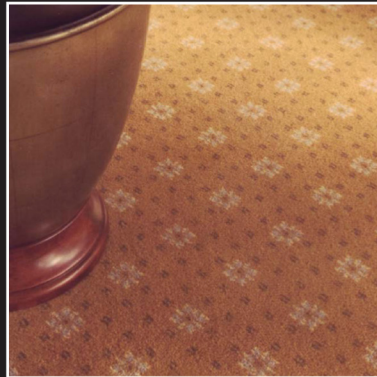
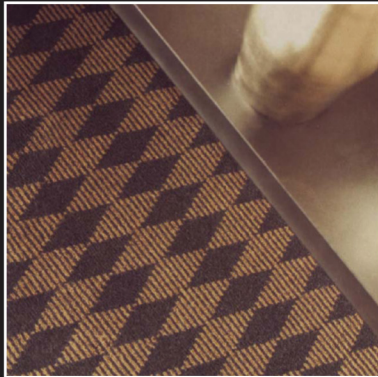
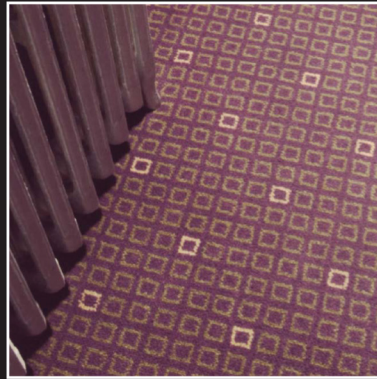


# HOTEL COLLECTION



HERITAGE, BEAUTY, SERVICE

[www.gaskell.co.uk](http://www.gaskell.co.uk)



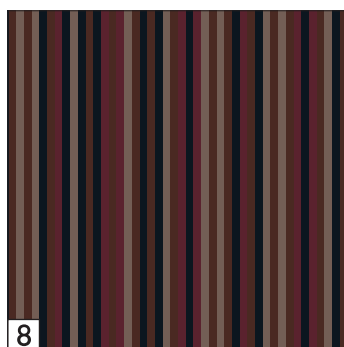
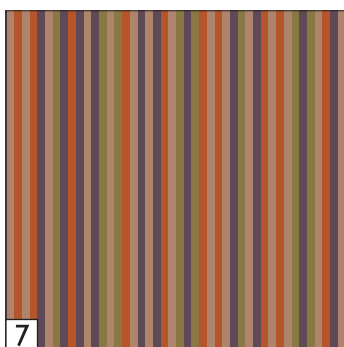
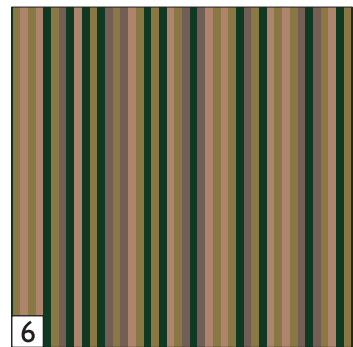
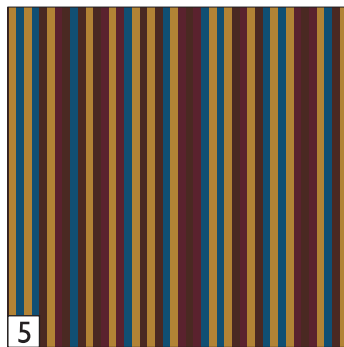
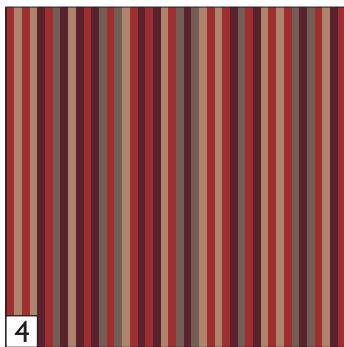
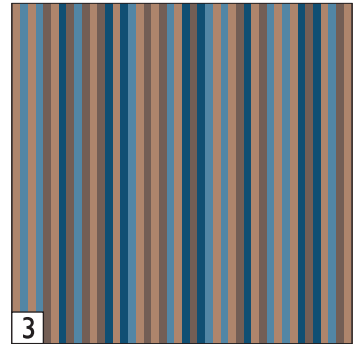
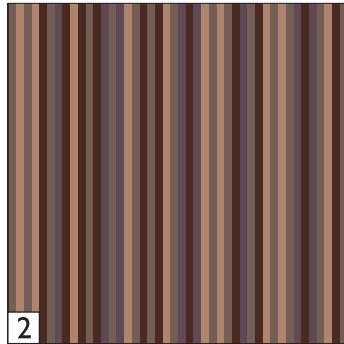
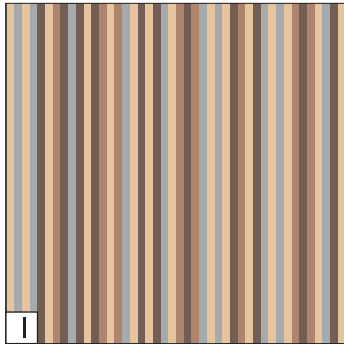
# room three



warm tones and soft lines of colour create a sense of space

N/A

	Straight Match	Repeat
1	Ivory	9/G9408
2	Walnut	2/G9408
3	Sky	11/G9408
4	Chilli	5/G9408
5	Ruby	10/G9408
6	Fern	52/G9408
7	Leaf	51/G9408
8	Storm	7/G9408





# room twenty eight

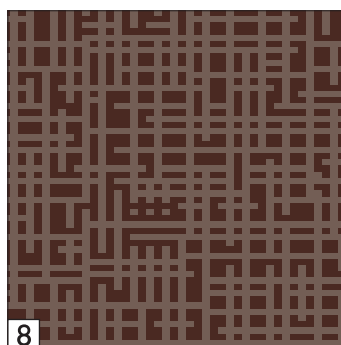
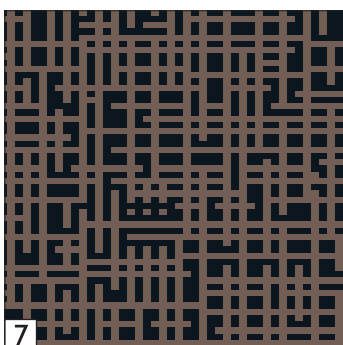
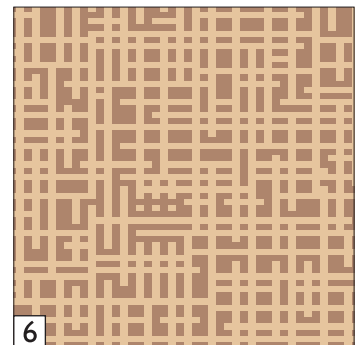
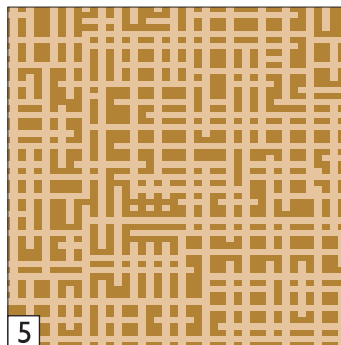
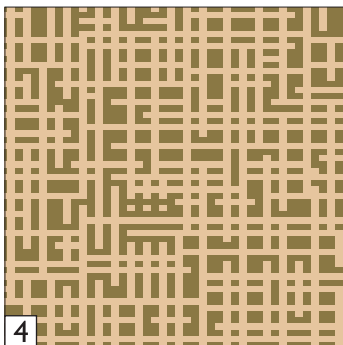
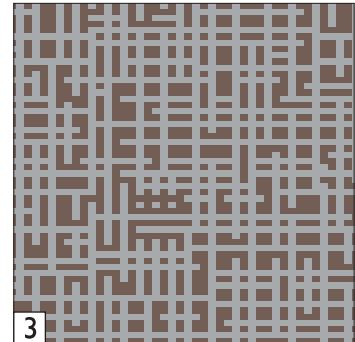
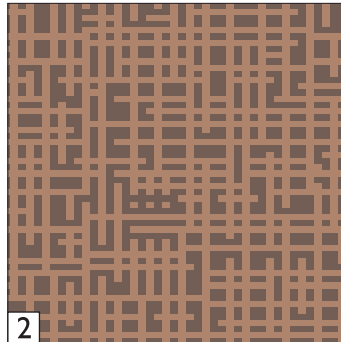
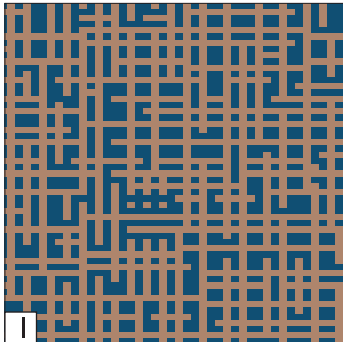


a simple two coloured abstract design gives a textured feel

74cm (29")

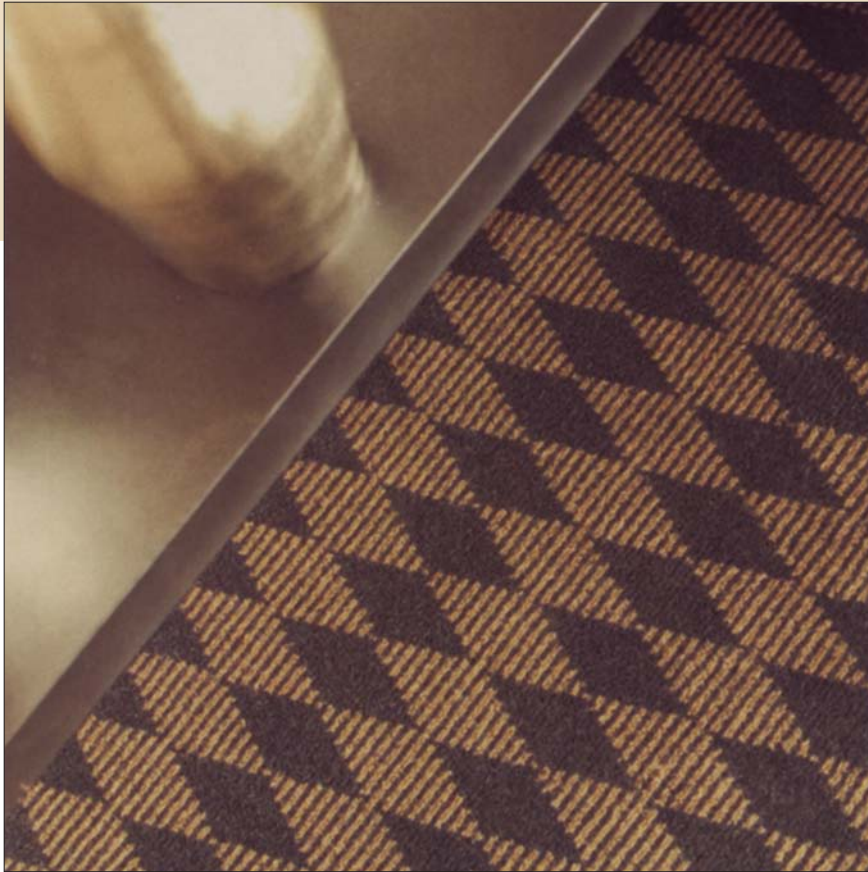
Straight Match Repeat

1	Sky	36/G6947
2	Peat	4/G6947
3	Frost	47/G6947
4	Fern	22/G6947
5	Gold	7/G6947
6	Ivory	19/G6947
7	Storm	38/G6947
8	Walnut	43/G6947





# room eleven

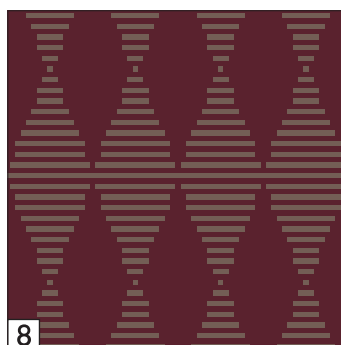
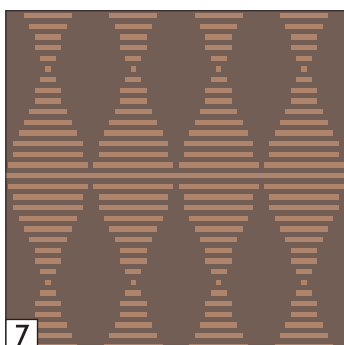
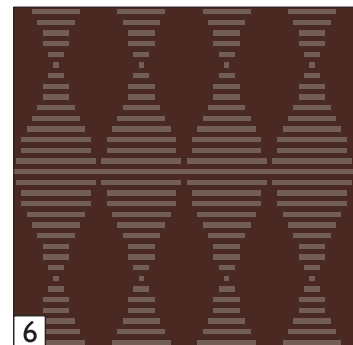
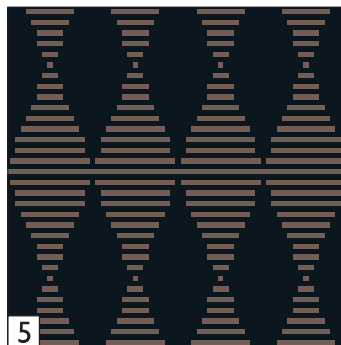
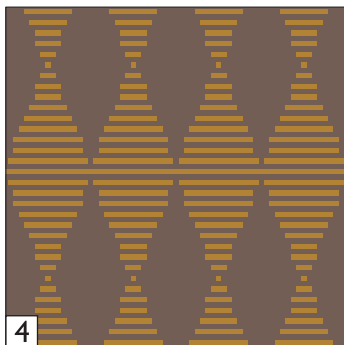
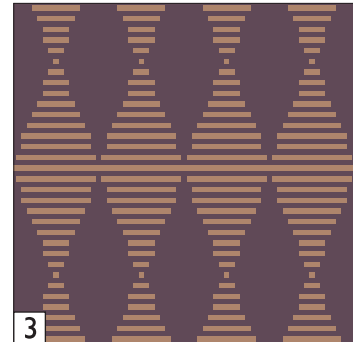
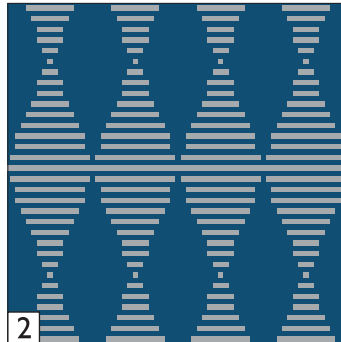
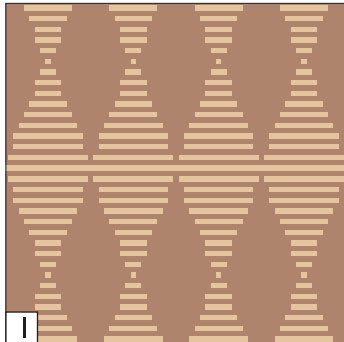


a stunning contemporary design that looks great in any setting

15cm (6")

Straight Match Repeat

1	Calico	4/G9055
2	Sky	29/G9055
3	Mauve	28/G9055
4	Gold	25/G9055
5	Storm	22/G9055
6	Walnut	27/G9055
7	Peat	26/G9055
8	Ruby	20/G9055







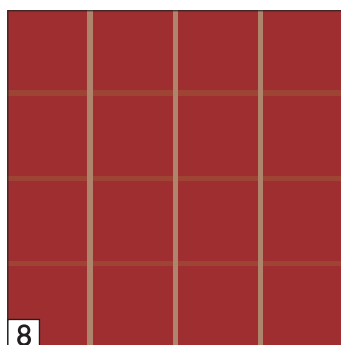
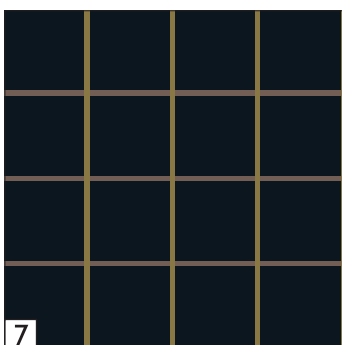
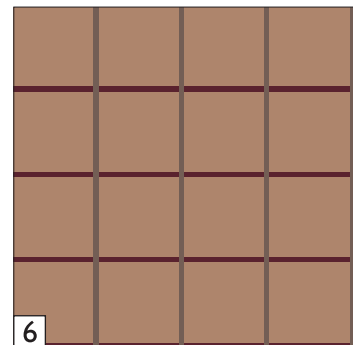
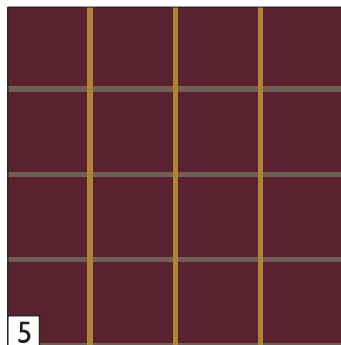
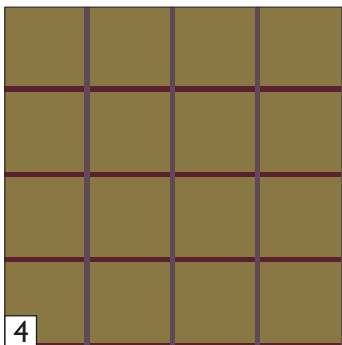
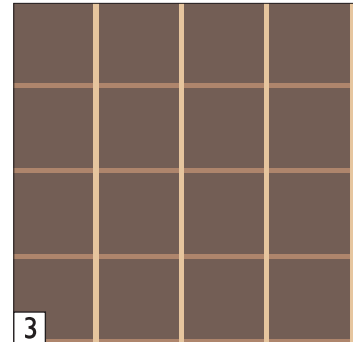
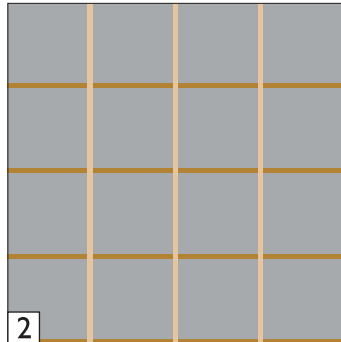
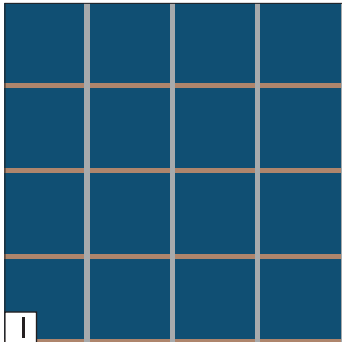
# room twenty two



the simplicity of clean straight lines creates a perfect balance for any interior

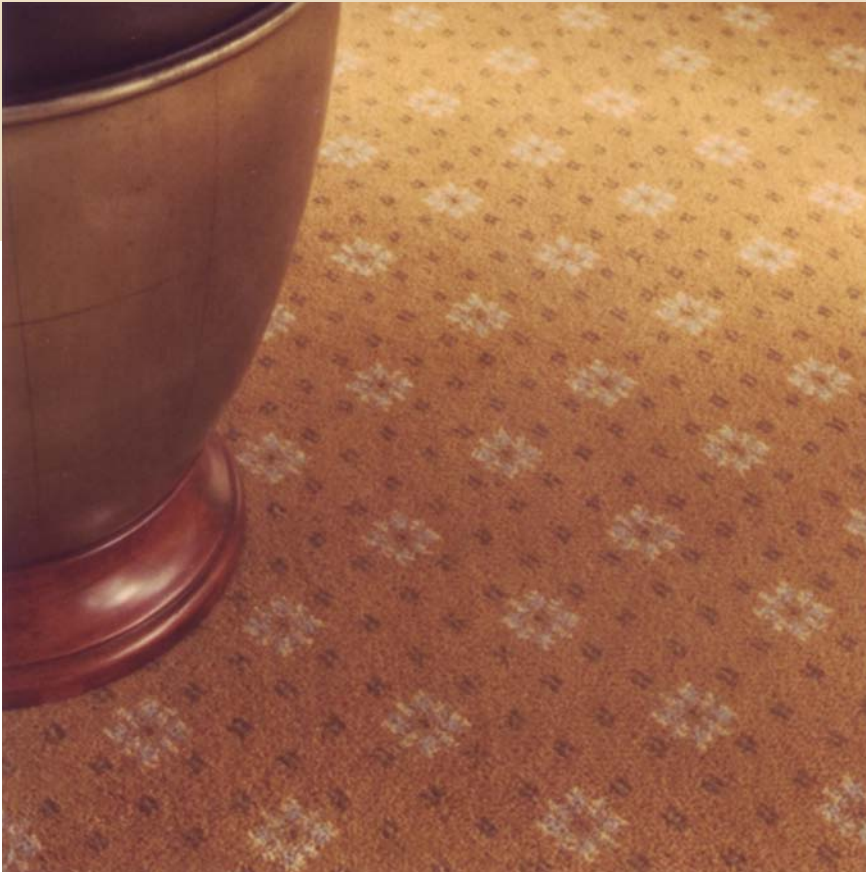
6cm (2 1/3")  
Straight Match Repeat

1	Sky	26/G9120
2	Frost	1/G9120
3	Peat	2/G9120
4	Fern	25/G9120
5	Ruby	24/G9120
6	Calico	4/G9120
7	Storm	77/G9120
8	Chilli	73/G9120





# room thirty

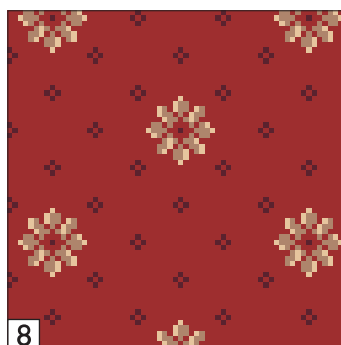
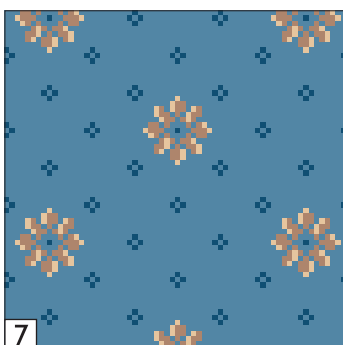
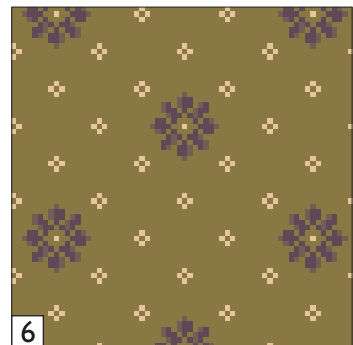
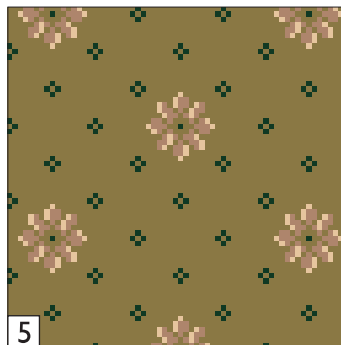
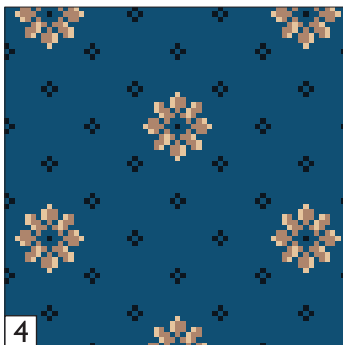
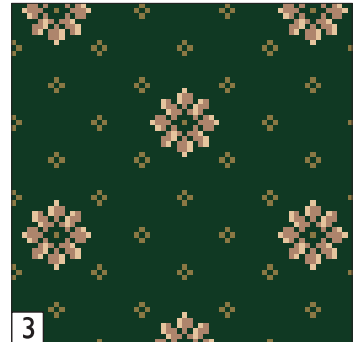
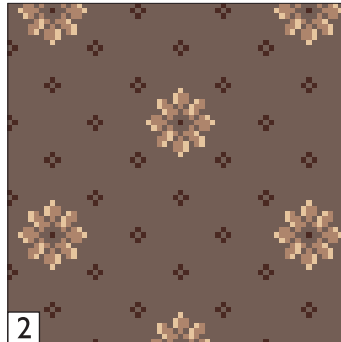
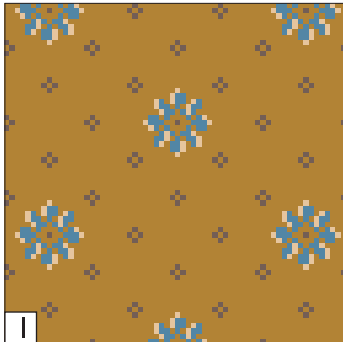


classic italian style featuring elegant floral motifs

16.5cm (6 1/2")

Straight Match Repeat

1	Gold	22/G7289
2	Peat	18/G7289
3	Pine	24/G7289
4	Sky	12/G7289
5	Leaf	23/G7289
6	Fern	10/G7289
7	Aqua	16/G7289
8	Chilli	11/G7289





# room fifteen

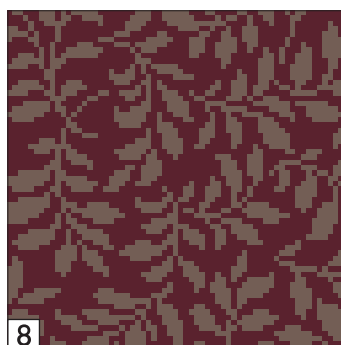
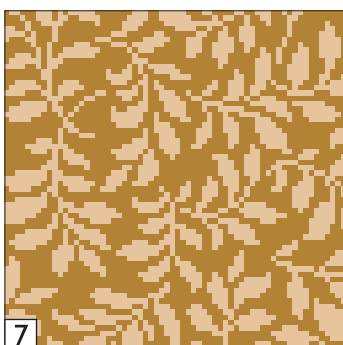
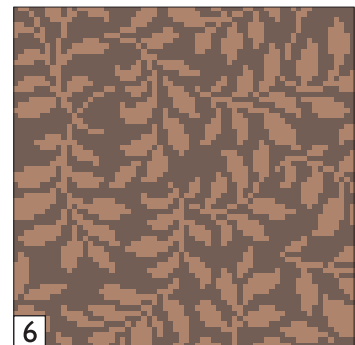
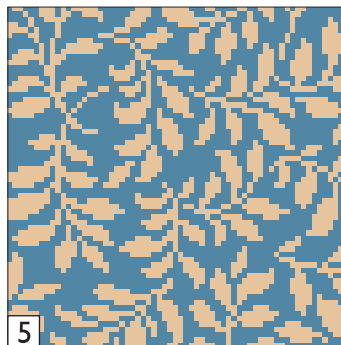
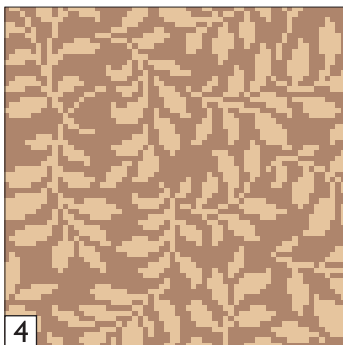
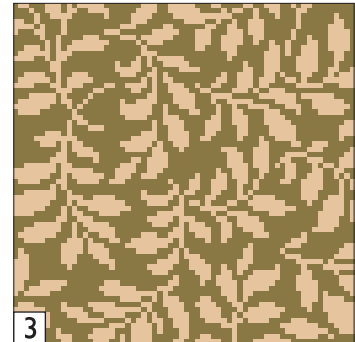
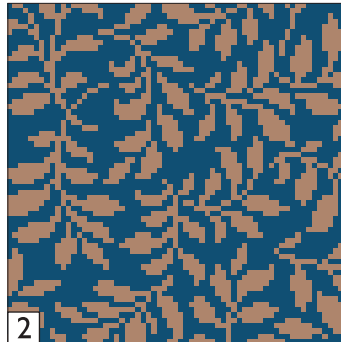
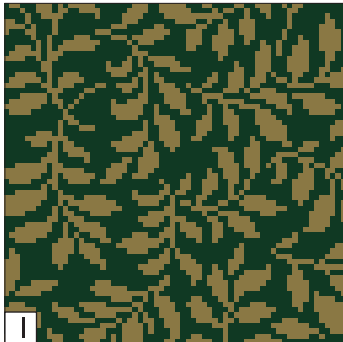
an elegant leaf pattern in a  
range of shades



75cm (29 1/2")

Half Drop Repeat

1	Pine	19/G8901
2	Sky	18/G8901
3	Fern	11/G8901
4	Calico	10/G8901
5	Aqua	21/G8901
6	Peat	20/G8901
7	Gold	14/G8901
8	Ruby	17/G8901





# room sixteen

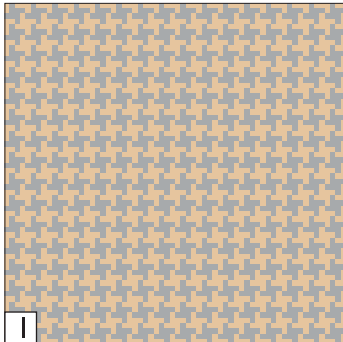


colonial chic gives a timeless elegance to any interior

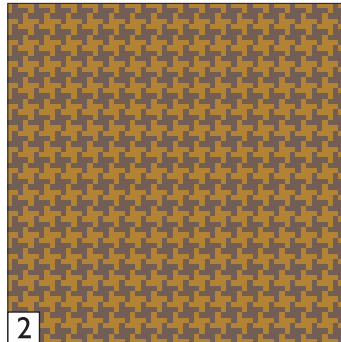
2cm (3/4")

Straight Match Repeat

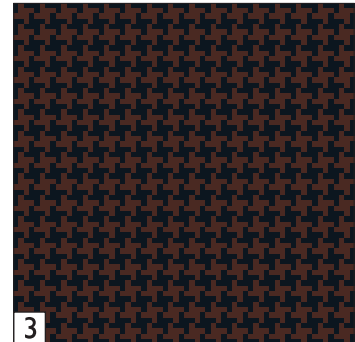
1	Ivory	42/G7036
2	Gold	47/G7036
3	Walnut	52/G7036
4	Fern	50/G7036
5	Peat	29/G7036
6	Ruby	51/G7036
7	Sky	48/G7036
8	Pine	49/G7036



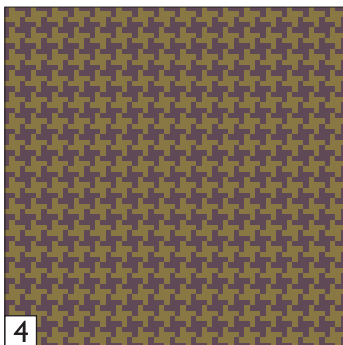
1



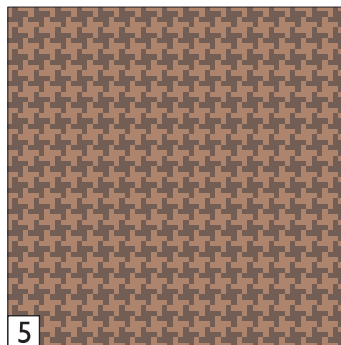
2



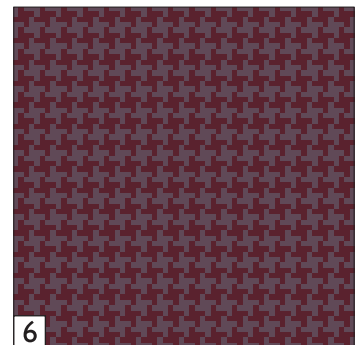
3



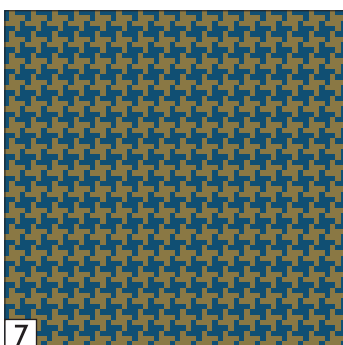
4



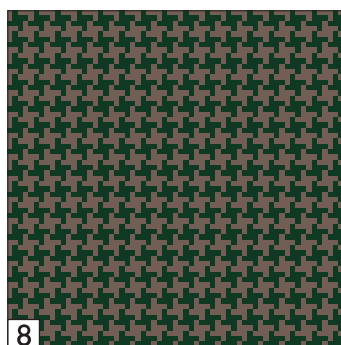
5



6



7



8





# room nineteen

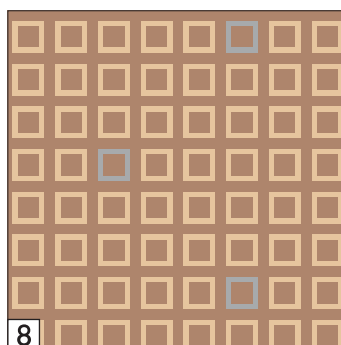
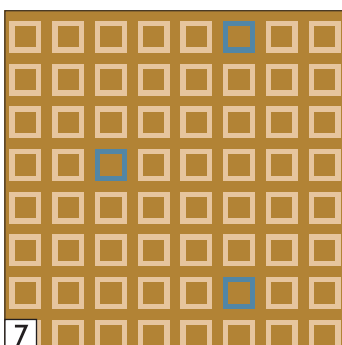
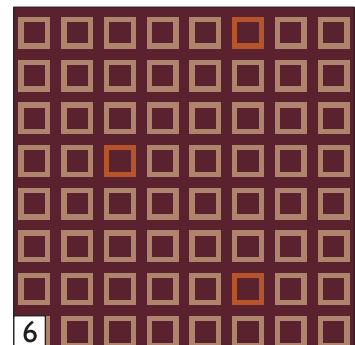
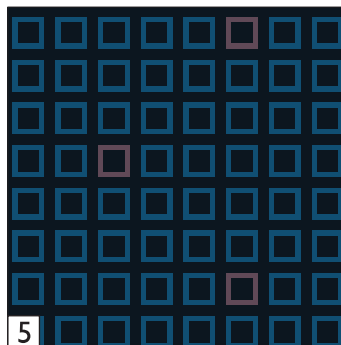
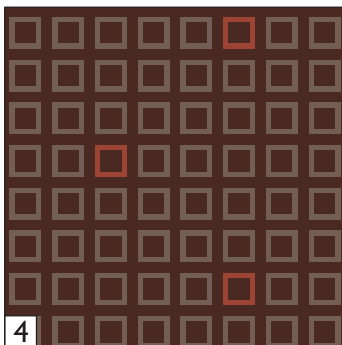
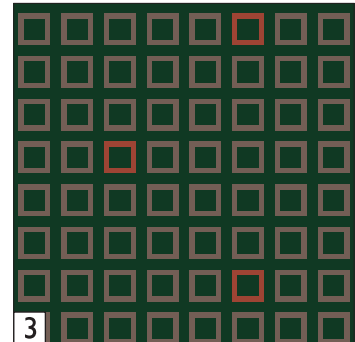
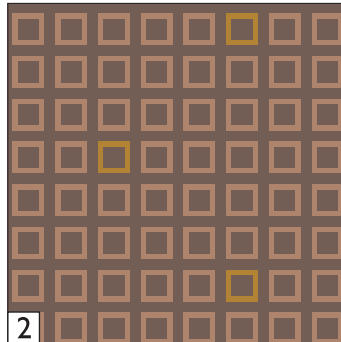
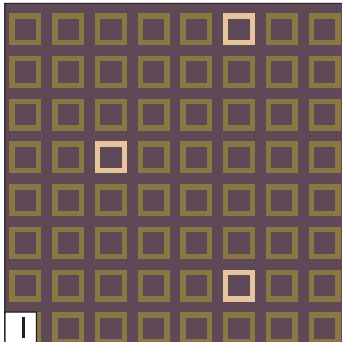


a classic cube pattern, skilfully  
crafted to complement any  
lifestyle

19.5cm (7 1/2")

Straight Match Repeat

1	Mauve	2/G9164
2	Peat	13/G9164
3	Pine	14/G9164
4	Walnut	12/G9164
5	Storm	4/G9164
6	Ruby	1/G9164
7	Gold	38/G9164
8	Calico	9/G9164



## The Infinity Collection - Standard Palette vol II

Quality	Pitch (per inch)	Row (per inch)	Pile Weight (g/msq)	Width (m)	Appearance Class	Luxury rating
Windermere	7	6	920	4	23/32 General Commercial use	LC3
Derwent	7	7	1070	4	33-Heavy Commercial use	LC4
Grassmere	7	8	1225	4	33-Heavy Commercial use	LC4
Coniston	7	9	1380	4	33-Heavy Commercial use	LC4
Ullswater(spike resist)	7	10	1530	4	33-Heavy Commercial use	LC4

### quality selection

The qualities detailed in the matrix above represent specifications which should satisfy most commercial requirements. With each particular installation, the decision on which quality is most appropriate will depend on the levels of traffic and the length of time the carpet is expected to be installed.

Gaskell Mackay have many years of experience in these considerations and provide detailed advice on quality selection on a project by project basis. Technical specifications are available on request.

### colour and design

Colour and the presence or absence of a pattern can have a significant bearing on the long term appearance retention of the carpet. As a general rule, darker red, brown and grey tones are much less sensitive in displaying soiling than the equivalent blue, green or purple shades. All light colours are dirt sensitive, while highly patterned carpets tend to hide dirt, cigarette burns and stains.

Other aspects will also influence the choice of colour. For example, the light in a building (natural or artificial) can have a dramatic effect on the apparent colour of the carpet. Therefore carpet samples should be viewed under different light sources to ascertain their apparent colours.

### planning and estimation service

Using the latest Callidus planning software, Gaskell Mackay can accurately estimate carpet requirements from site plans to any scale. Accurate waste estimations can be readily calculated and adjustments made to minimise this.

One critical area of importance is seam placement. Knowledge of customer flow through the area is used to guide the fitter in the careful positioning of seams to avoid premature wear. The planning and estimation service is free.

### samples

Samples of all the designs and colourways illustrated (along with many others) can be obtained and are usually available within 72 hours.

### installation

The 'Infinity' range of carpet qualities which includes Windermere, Derwent and Coniston are produced on a revolutionary new, high speed axminster loom and are woven without a traditional selvedge. The selvedge is trimmed during manufacturing as close as possible to the pile. Normally this allows the carpet to be joined without necessity for further trimming of the selvedge. The uniquely formed selvedge may however be trimmed by the installer if he feels the carpet has not been trimmed sufficiently to the pile and would leave a gap after seaming. Fusible yarns are woven into the selvedge to provide extra pile anchorage.

It is essential to seal the back of the carpet before cutting, particularly on cross cuts and then seal the cut edge to prevent fraying. The carpet may be seamed with heat seaming tape or electro-seaming tape (e.g. 'Silvaseam'). The carpet may be hand sewn if this is specified for border work after the carpet has been sealed and cut.

In all other respects the carpet should be installed in accordance with BS5325 (Code of Practice for the Installation of Textile Floorcoverings) and NICF Carpet Installation Manual by a trained axminster carpet installer.

There are a number of ways in which the 'Infinity' range of Gaskell Mackay qualities can be installed including stretch fitted over a suitable contact underlay on to gripper, full adhesion to a prepared subfloor or installed on double stick underlay systems. Installation on double stick underlay systems should be in accordance with the recommendations issued by Gaskell Mackay Carpets Ltd.

### maintenance

Effective dirt barrier systems must be fitted in footwells in, or immediately adjacent to external entrances. Carpet maintenance must be carefully planned and this plan implemented from the moment the carpet is installed.

Maintenance methods and levels must be tailored to foot traffic intensity to prevent both inadequate or unnecessary cleaning. A cleaning schedule usually includes three levels of cleaning.

1. Regular maintenance (Daily vacuum cleaning and spot removal).
2. Intermediate "wet" cleaning or surface brightening.
3. Deep or restorative "wet" cleaning.

Depending on how effective the regular (usual daily) maintenance is, then intermediate cleaning will have to be used eventually. Effective intermediate cleaning can often postpone the need for restorative cleaning, all of which will save maintenance costs. Correct and regular maintenance will also be cost effective by increasing the lifespan of the carpet.

The above information on installation and maintenance provides general guidelines and full details on these subjects can be obtained by contacting the Contract Sales Desk on 01429 892525 or . E-MAIL [sales@gaskell.co.uk](mailto:sales@gaskell.co.uk)



HERITAGE, BEAUTY, SERVICE

[www.gaskell.co.uk](http://www.gaskell.co.uk)