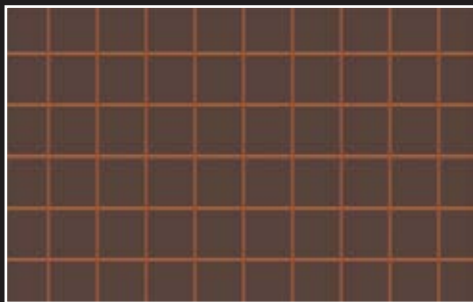


INFINITY VELVETS COLLECTION



HERITAGE, BEAUTY, SERVICE

www.gaskell.co.uk

Due to the limitations of the printing process, we are unable to guarantee an exact colour reproduction of these designs.

To obtain a more accurate representation, use the individual tuft boxes. A guide to the colours used is included with each design

from the new standard palette



from the tones palette





A collection of culinary coloured designs
inspired by the latest style trends
in Interior Design

Hot spices, Chocolate creams & Citrus zest
blend together to create
the infinity velvets collection

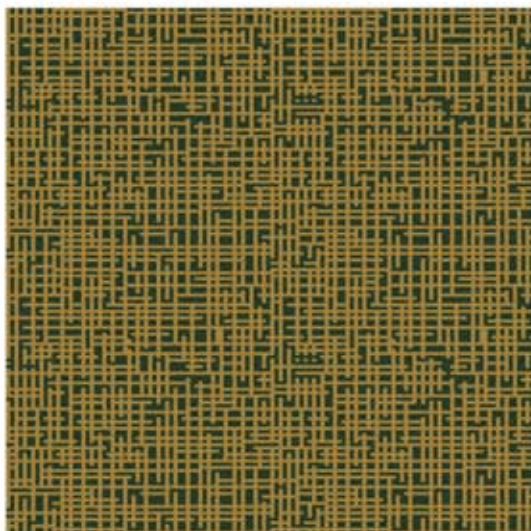
available in the
infinity and ***infinity tones*** palettes
in 4m broadloom

Cedar & Straw



Code M025678B Width 4.00m Match 0.76m S/M

Code M025779B



Width 4.00m Match 0.23m S/M

Code M025877F



Width 4.00m Match 0.30m S/M

Code M025977E



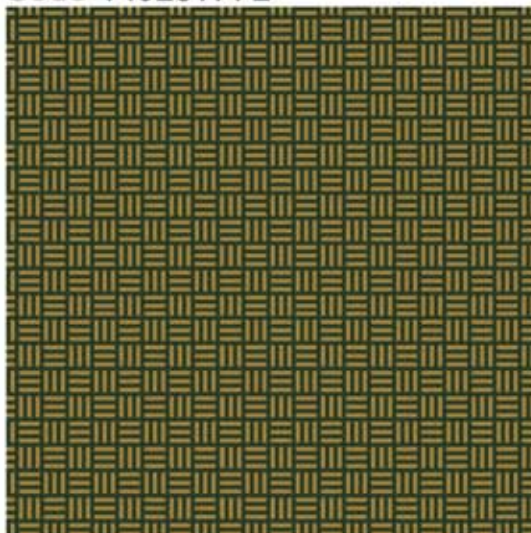
Width 4.00m Match 0.09m S/M

Code M026077F



Width 4.00m Match 0.52m S/M

Code M026177E



Width 4.00m Match 0.09m S/M

Code M026277F



Width 4.00m Match 0.26m S/M

Straw & Azure



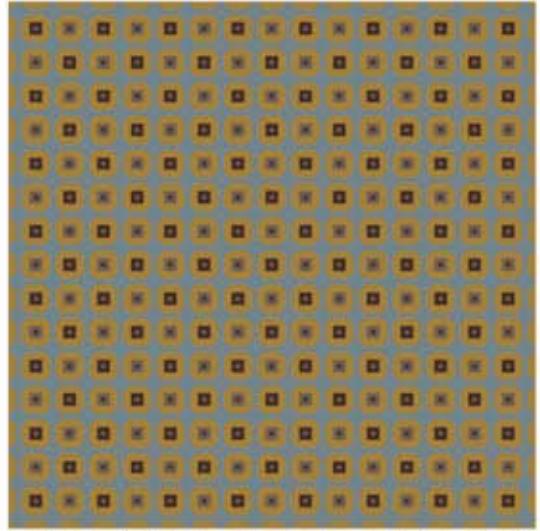
Code M026378B Width 4.00m Match 0.76m S/M

Code M026477F



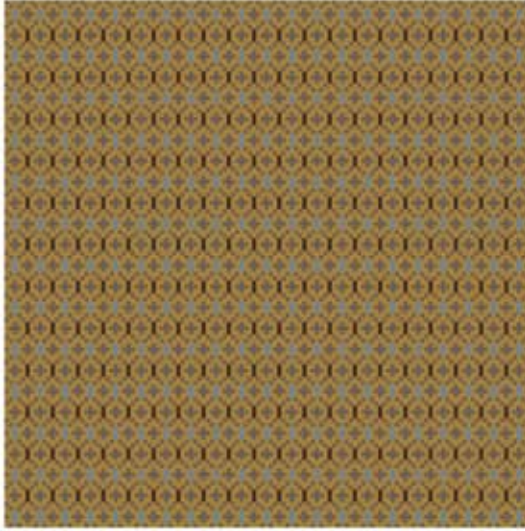
Width 4.00m Match 0.12m S/M

Code M026577F



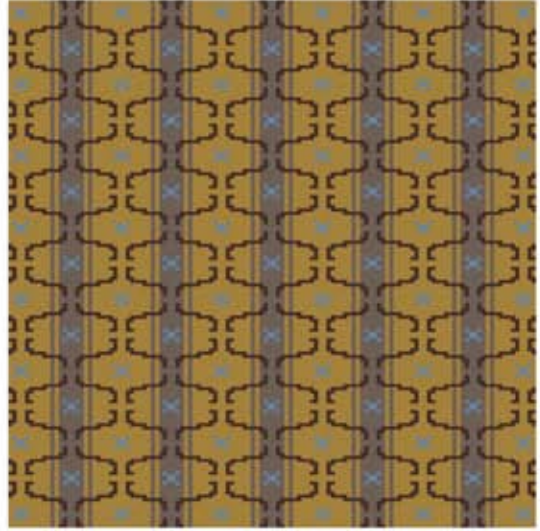
Width 4.00m Match 0.06m S/M

Code M026677F



Width 4.00m Match 0.07m S/M

Code M026779F



Width 4.00m Match 0.06m S/M

Code M026878B



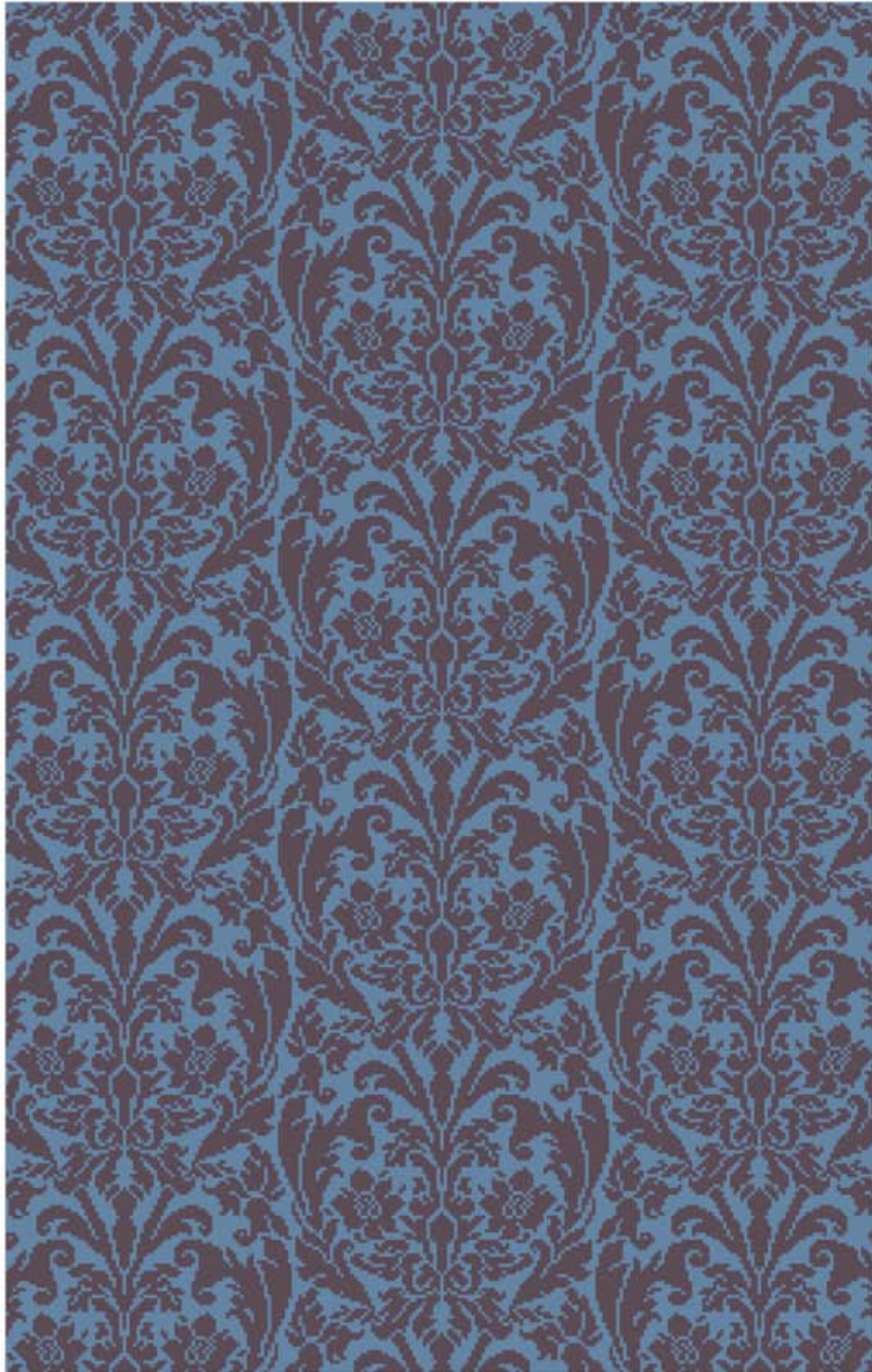
Width 4.00m Match 0.15m S/M

Code M026977E



Width 4.00m Match 0.44m S/M

Azure & Aubergine



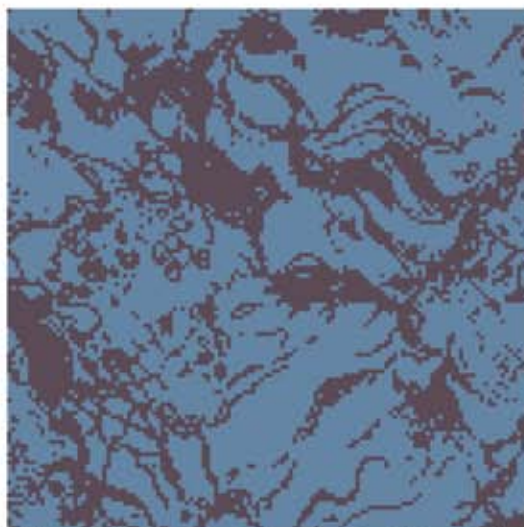
Code LW009677F Width 4.00m Match 0.30m S/M

Code LW010177E



Width 4.00m Match 0.39m S/M

Code LW010277A



Width 4.00m Match 0.68m H/D

Code LW010378B



Width 4.00m Match 0.15m S/M

Code LW010477E



Width 4.00m Match 0.16m S/M

Code LW010577E



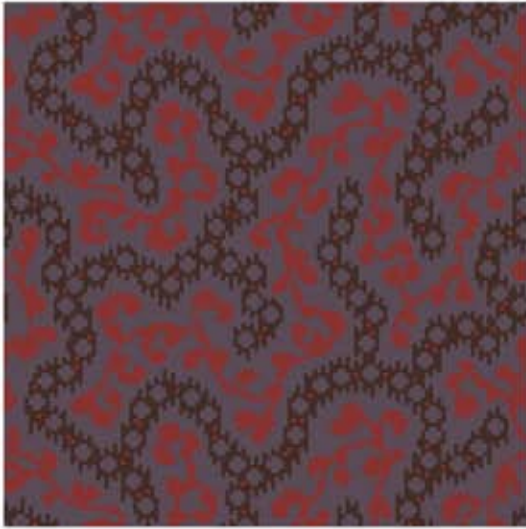
Width 4.00m Match 0.46m S/M

Aubergine & Coral



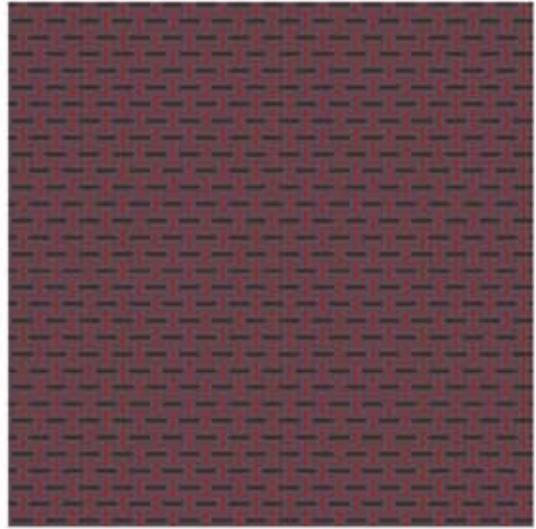
Code M027077F Width 4.00m Match 0.74m S/M

Code M027177E



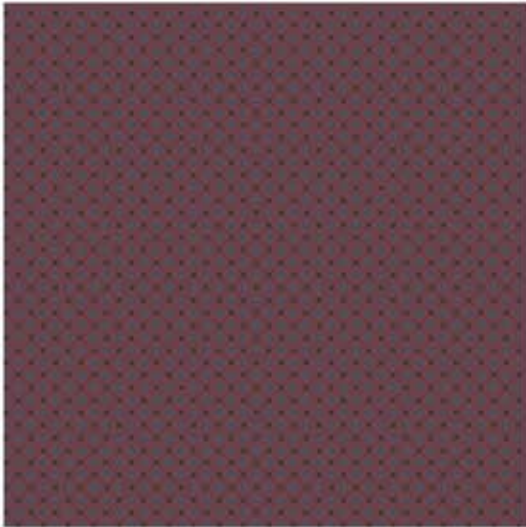
Width 4.00m Match 0.28m S/M

Code M027277F



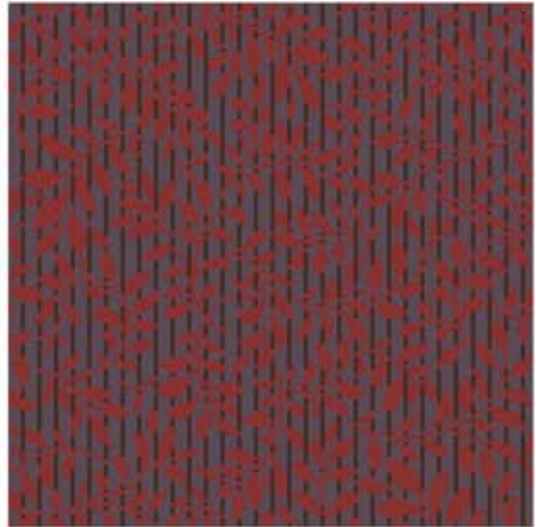
Width 4.00m Match 0.03m S/M

Code M027377F



Width 4.00m Match 0.09m S/M

Code M027477F



Width 4.00m Match 0.59m H/D

Code M027577F



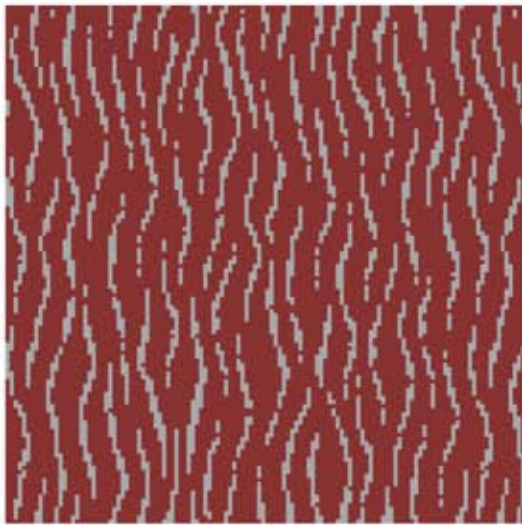
Width 4.00m Match 0.30m S/M

Coral & Silver



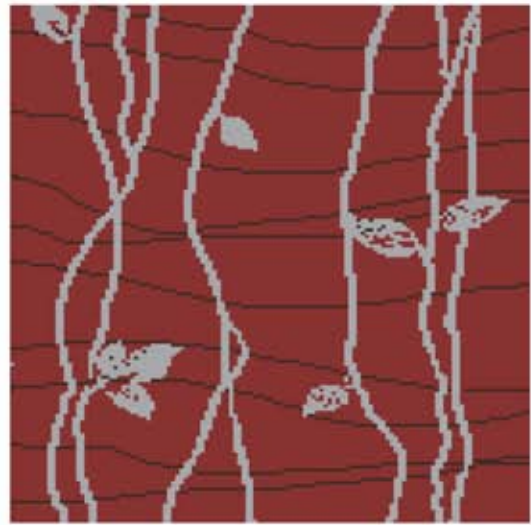
Code M027677F Width 4.00m Match 0.40m S/M

Code M027777E



Width 4.00m Match 0.46m S/M

Code M027879E



Width 4.00m Match 0.59m H/D

Code M027976A



Width 4.00m Match 0.42m H/D

Code M028077F



Width 4.00m Match 0.46m H/D

Code M028177F



Width 4.00m Match 0.02m S/M

Code M028277E



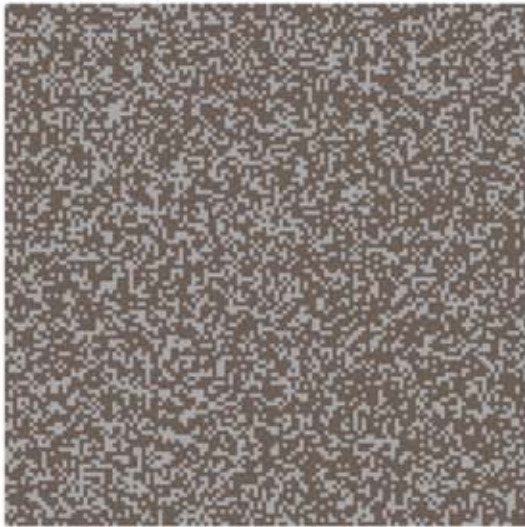
Width 4.00m Match 0.36m H/D

Silver & Grey



Code LW008078E Width 4.00m Match 0.69m S/M

Code LW010777E



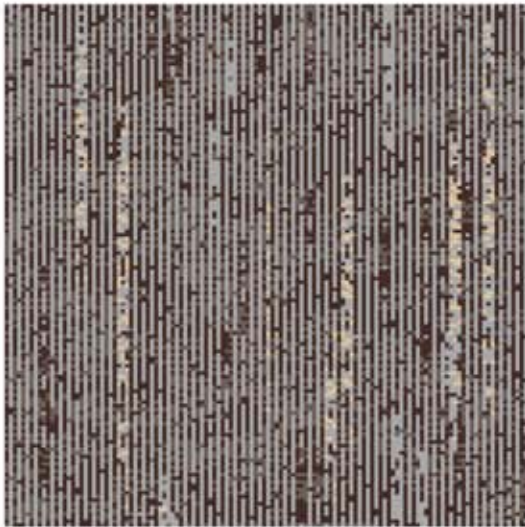
Width 4.00m Match 1.05m H/D

Code LW010877E



Width 4.00m Match 0.12m S/M

Code LW010978F



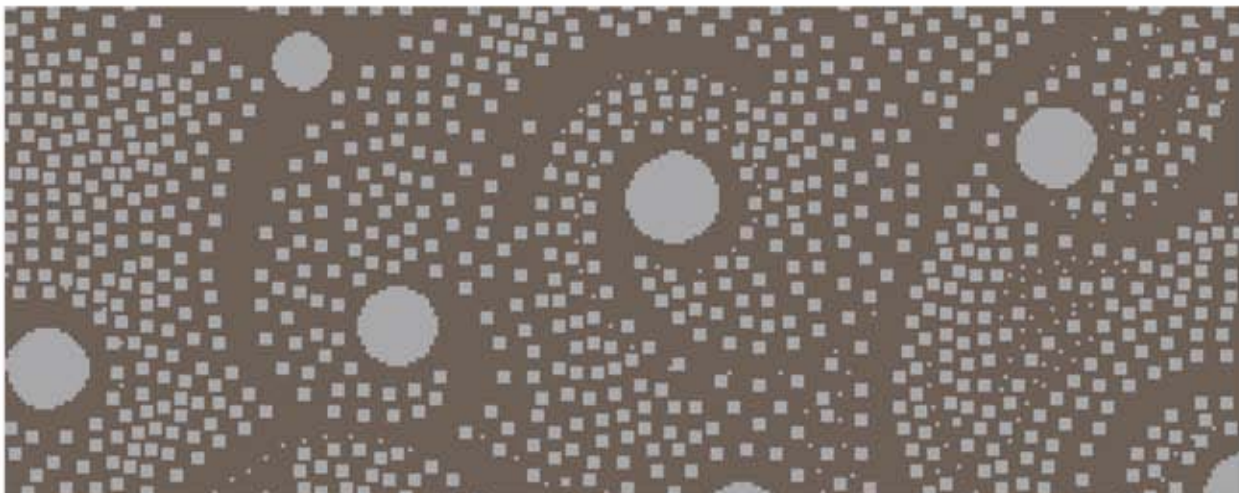
Width 4.00m Match 0.69m S/M

Code LW011079B



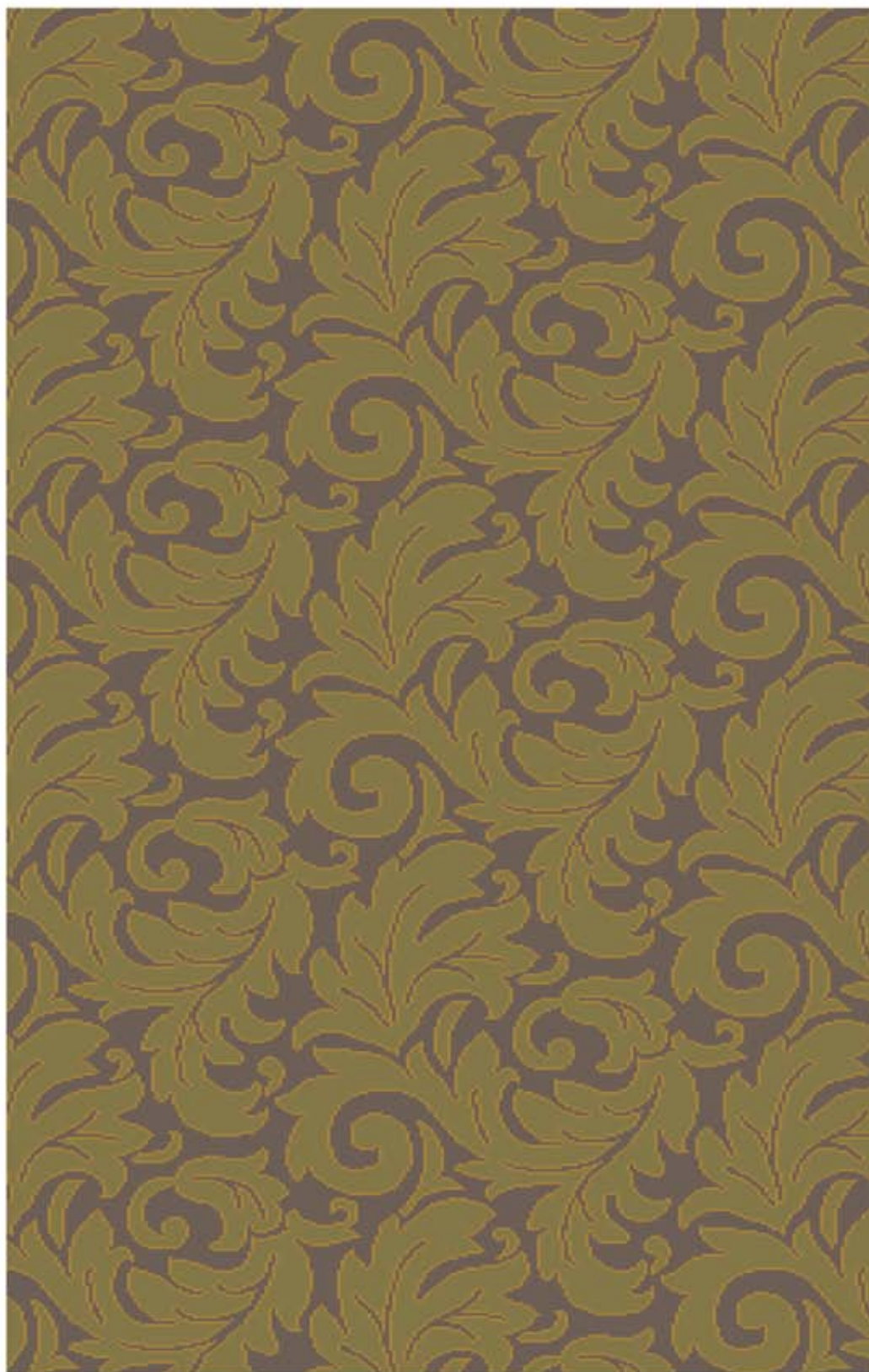
Width 4.00m Match 0.59m H/D

Code LW010677E



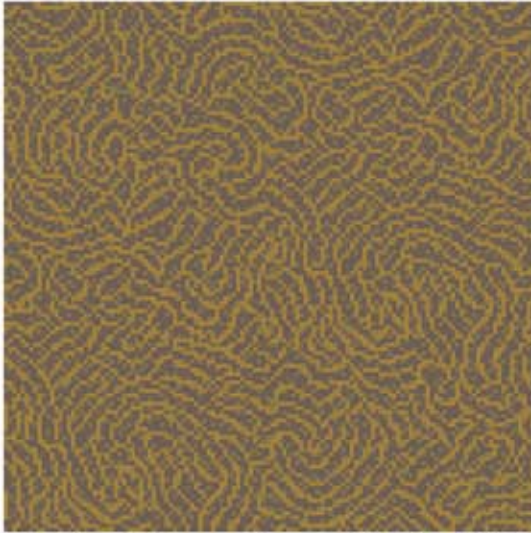
Width 4.00m Match 1.18m S/M

Grey & Moss



Code M028379E Width 4.00m Match 0.38m S/M

Code M028477E



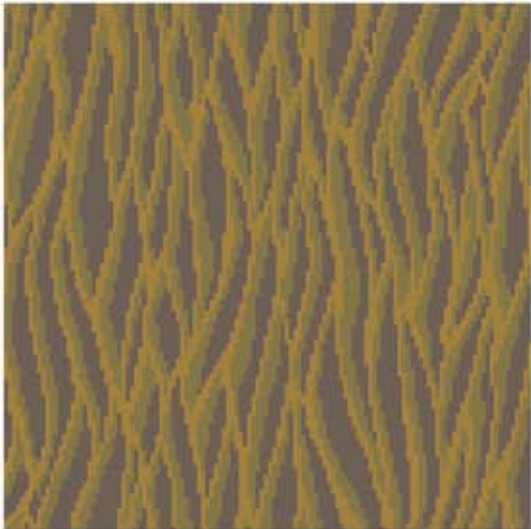
Width 4.00m Match 0.60m S/M

Code LW009778E



Width 4.00m Match 0.91m H/D

Code M028678A



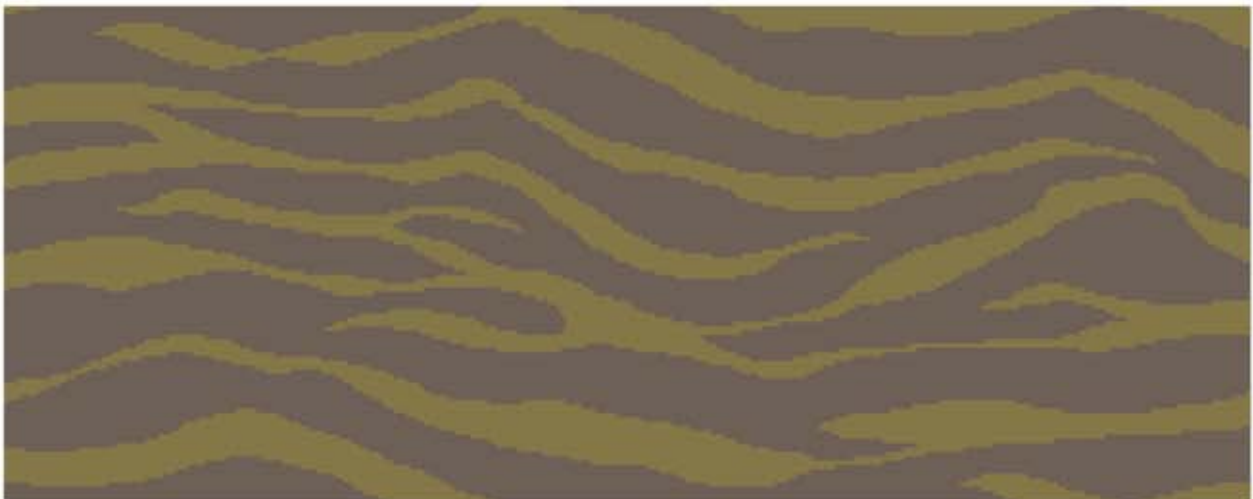
Width 4.00m Match 0.76m S/M

Code M028771B



Width 4.00m Match 0.20m S/M

Code LW009877E



Width 4.00m Match 0.76m H/D

Moss & Spice



Code LW009977B Width 4.00m Match 0.52m S/M

Code LW011578F



Width 4.00m Match 0.76m S/M

Code LW011277E



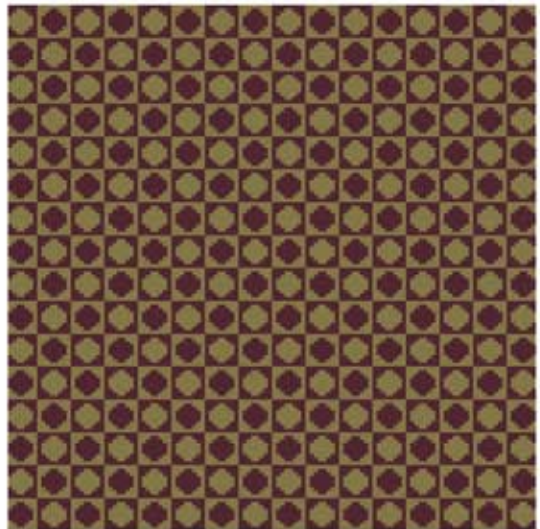
Width 4.00m Match 0.09m S/M

Code LW011177E



Width 4.00m Match 0.69m S/M

Code LW011378E



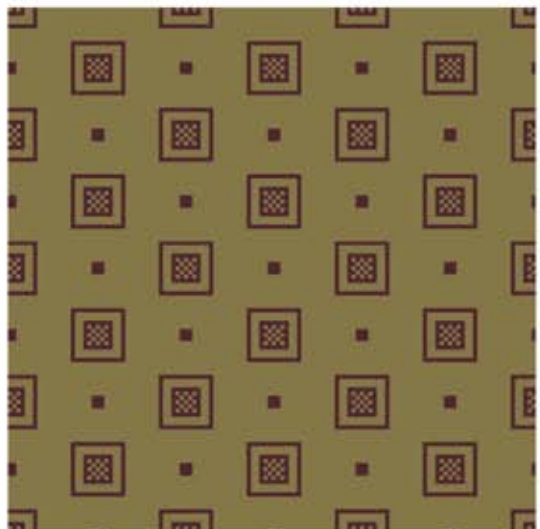
Width 4.00m Match 0.06m S/M

Code LW011678F



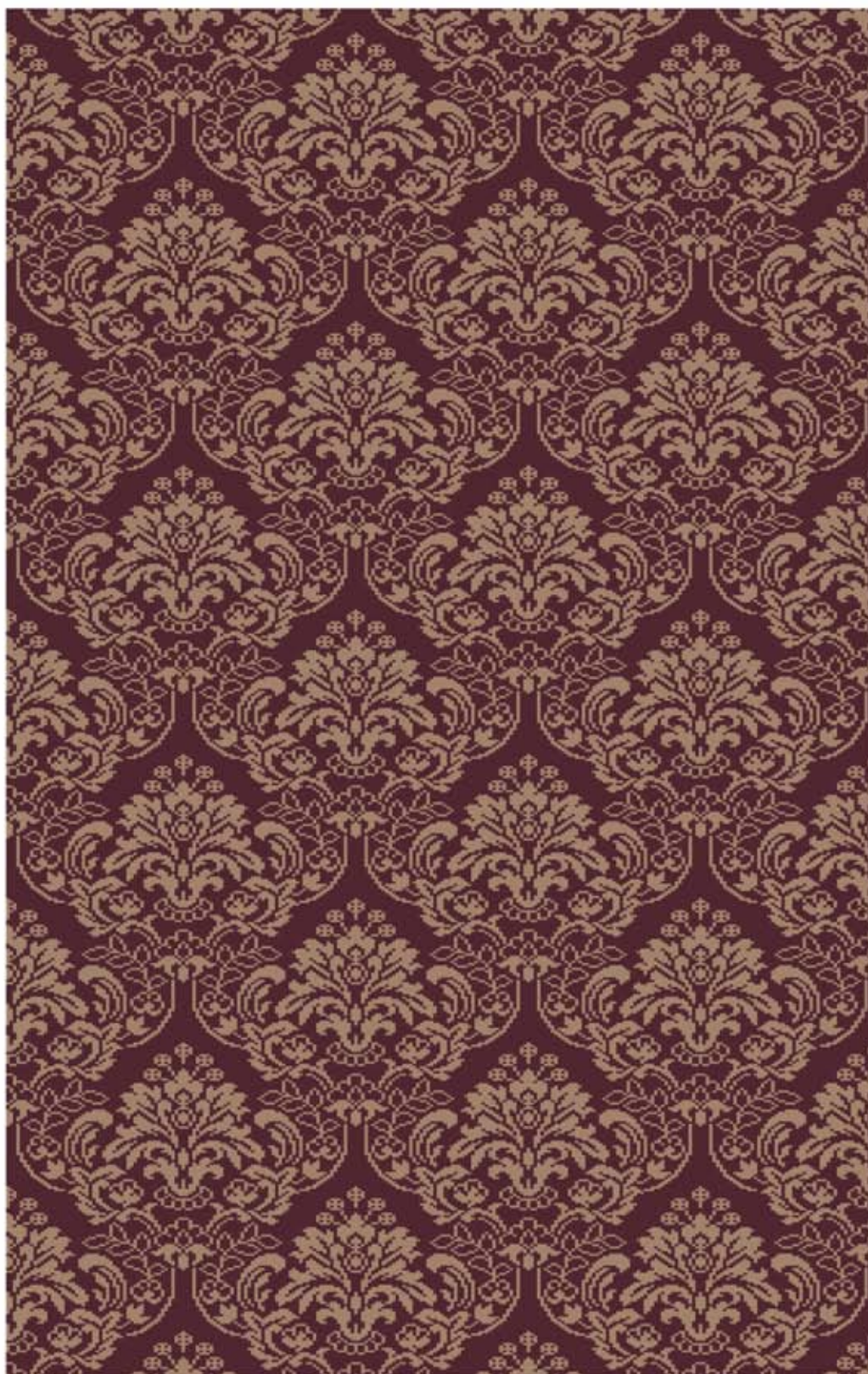
Width 4.00m Match 1.02m S/M

Code LW011477E



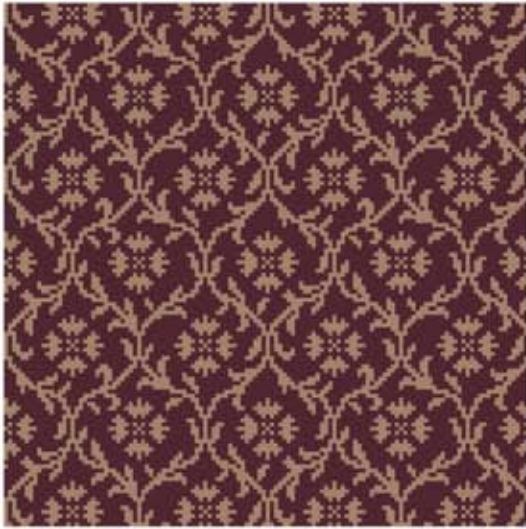
Width 4.00m Match 0.23m S/M

Spice & Stone



Code M028971B Width 4.00m Match 0.30m S/M

Code M029077E



Width 4.00m Match 0.15m S/M

Code M029177E



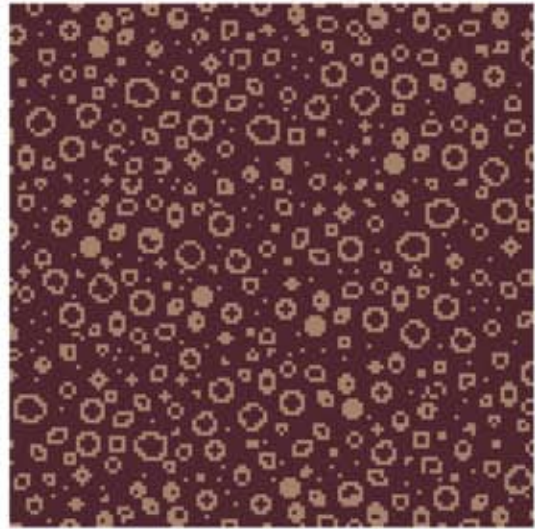
Width 4.00m Match 0.15m S/M

Code M029277E



Width 4.00m Match 0.51m S/M

Code M029377E



Width 4.00m Match 0.44m H/D

Code M029477E



Width 4.00m Match 0.69m S/M

Code M029577E



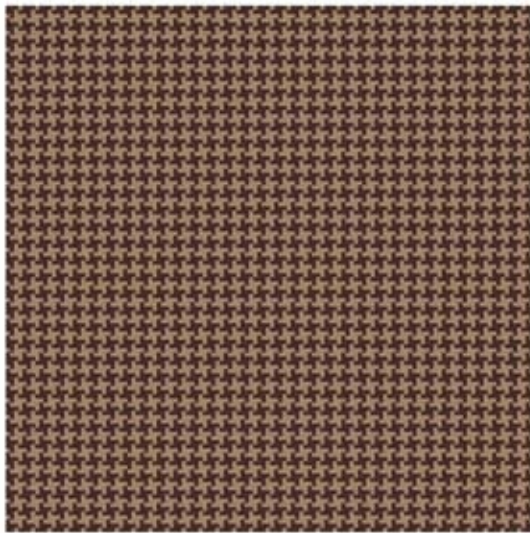
Width 4.00m Match 0.26m S/M

Stone & Umber



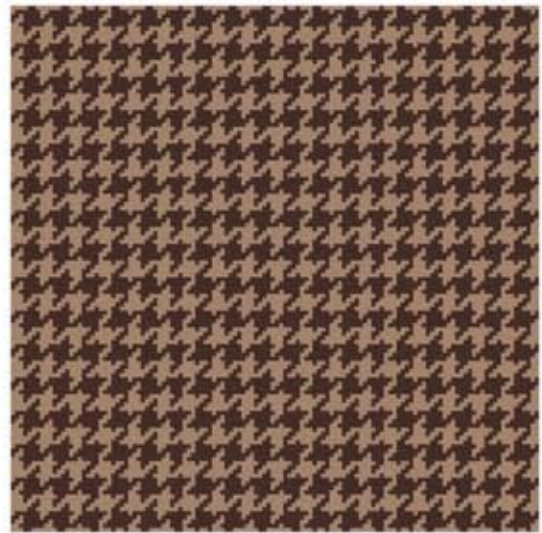
Code M029679E Width 4.00m Match 1.52m H/D

Code M029777F



Width 4.00m Match 0.09m S/M

Code M029877F



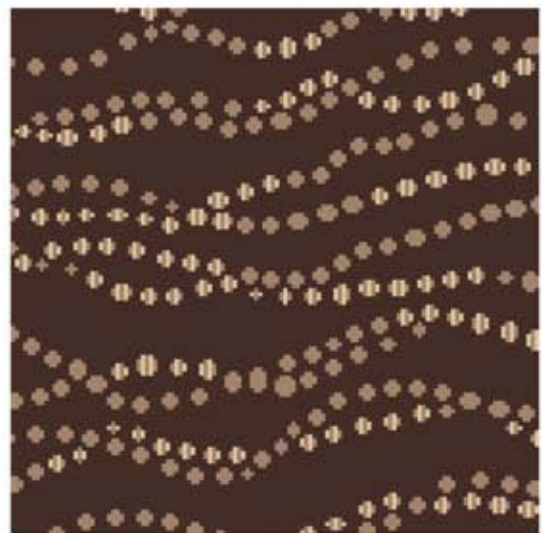
Width 4.00m Match 0.03m S/M

Code M029977E



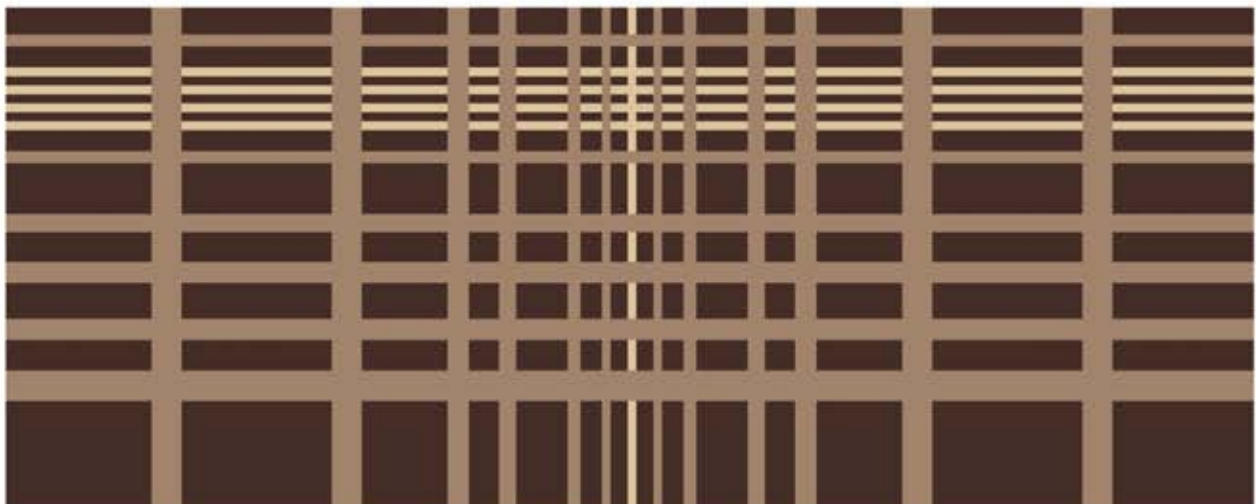
Width 4.00m Match 0.30m S/M

Code M030077A



Width 4.00m Match 0.68m S/M

Code M030271E



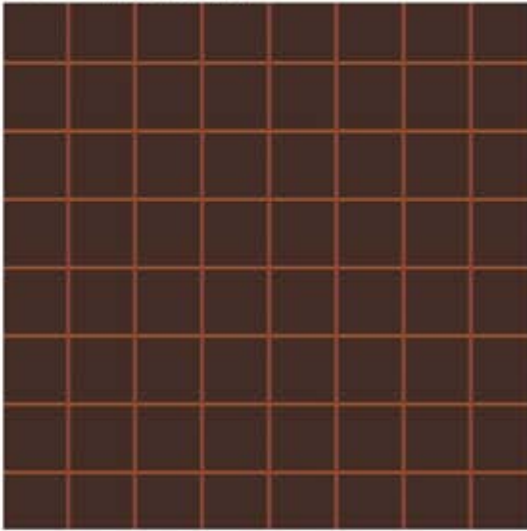
Width 4.00m Match 1.12m H/D

Umber & Mango



Code M030479B Width 4.00m Match 0.73m S/M

Code M030579F



Width 4.00m Match 0.06m S/M

Code M030677E



Width 4.00m Match 0.78m 26cm/D

Code M030777F



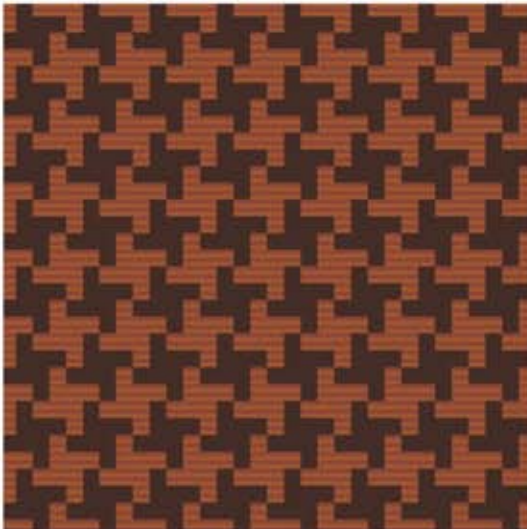
Width 4.00m Match 0.15m S/M

Code M030877A



Width 4.00m Match 0.36m S/M

Code M030977F



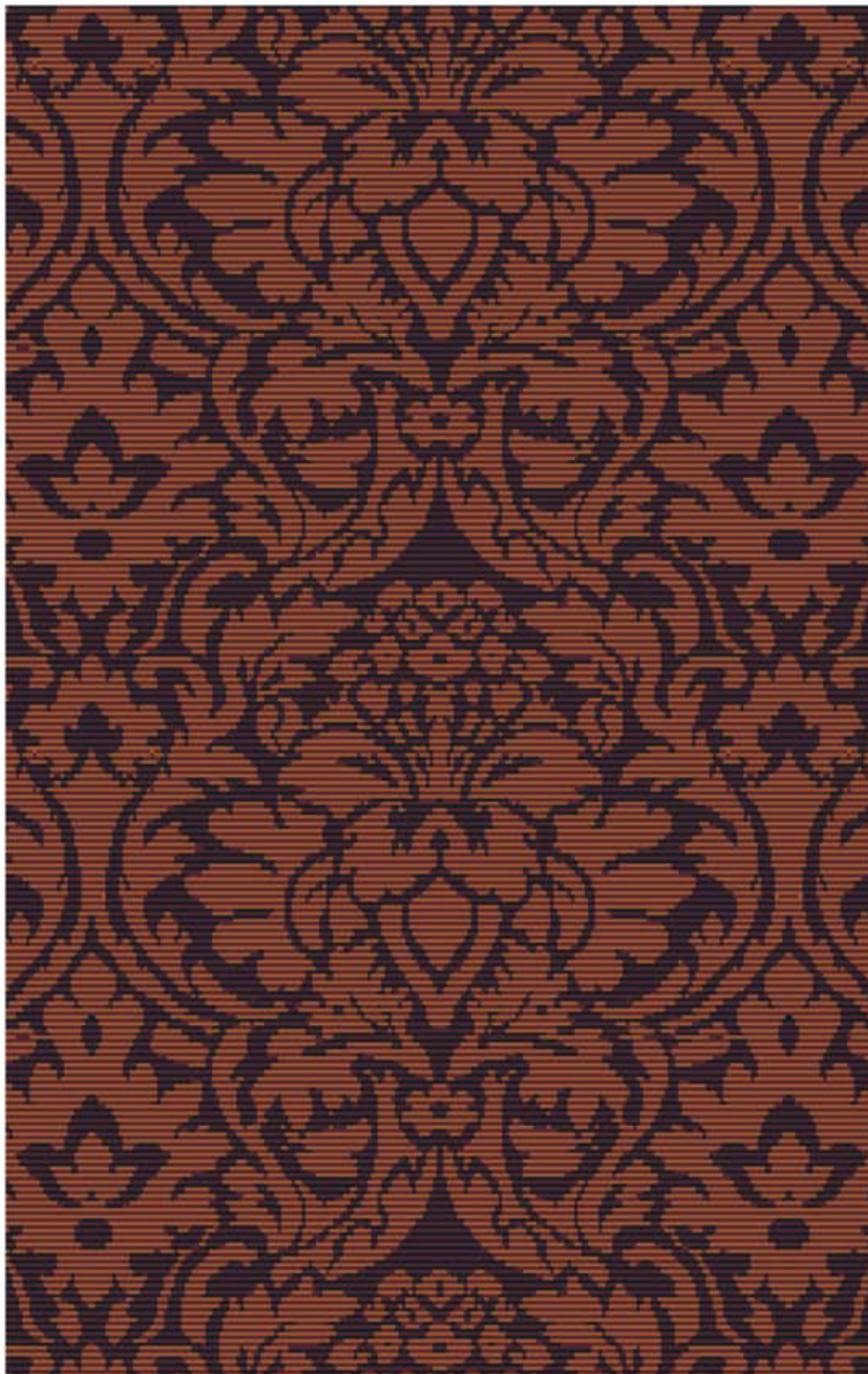
Width 4.00m Match 0.06m S/M

Code M031077A



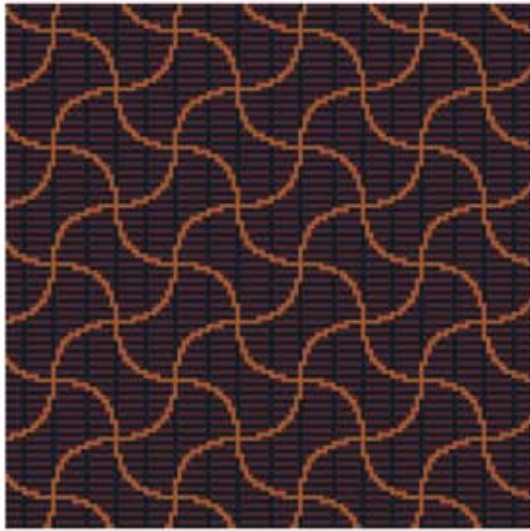
Width 4.00m Match 0.39m S/M

Mango & Slate



Code LW010077E Width 4.00m Match 0.73m S/M

Code LW011877F



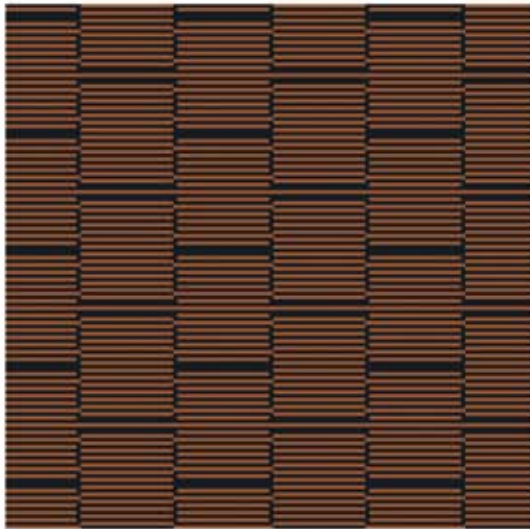
Width 4.00m Match 0.10m S/M

Code LW011977F



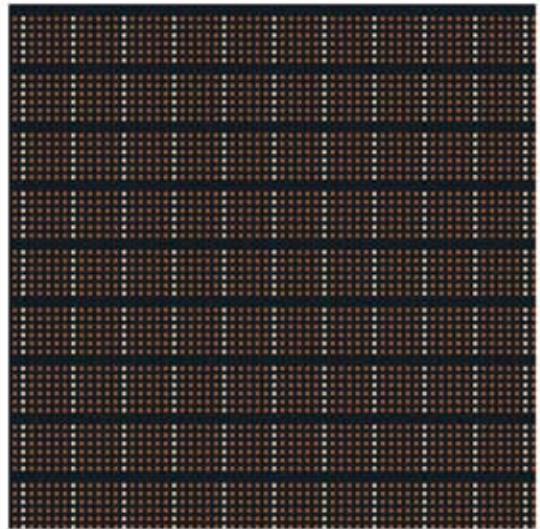
Width 4.00m Match 0.17m S/M

Code LW012078F



Width 4.00m Match 0.10m S/M

Code LW012177F



Width 4.00m Match 0.05m S/M

Code LW011779F



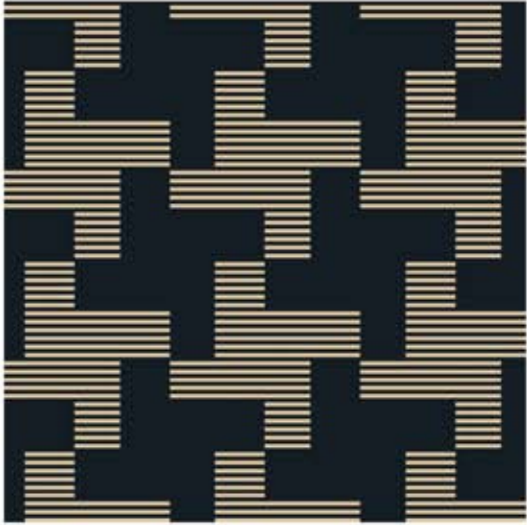
Width 4.00m Match 0.44m S/M

Slate & Linen



Code M031177E Width 4.00m Match 2.03m S/M

Code M031277F



Width 4.00m Match 0.17m S/M

Code M031377F



Width 4.00m Match 0.12m S/M

Code M031478B



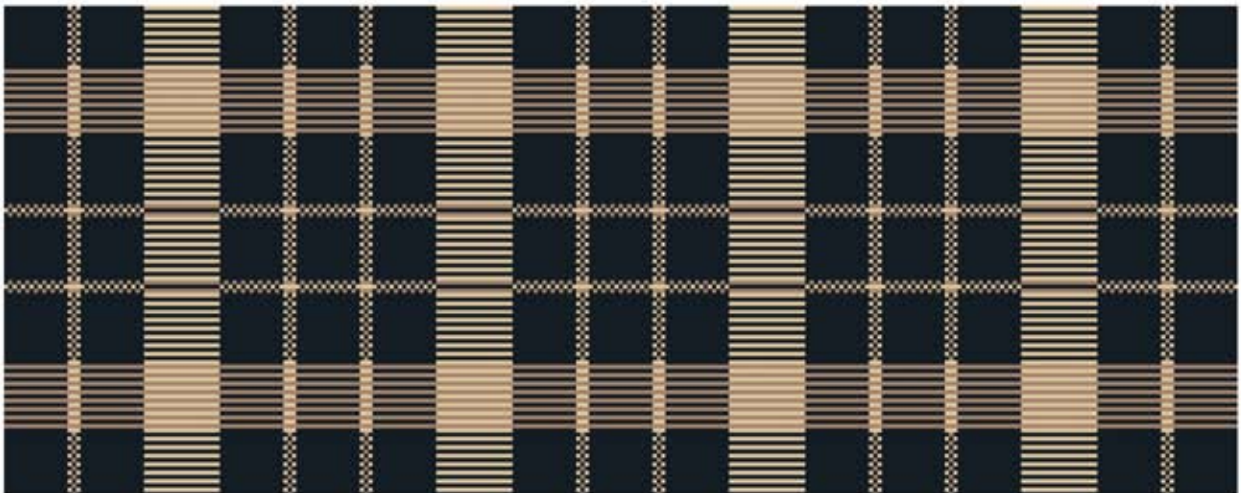
Width 4.00m Match 0.10m S/M

Code M031577F



Width 4.00m Match 0.16m S/M

Code M031677F



Width 4.00m Match 0.25m S/M

Linen & Grey



Code LW012277E Width 4.00m Match 0.83m H/D

Code LW012377A



Width 4.00m Match 0.40m S/M

Code LW012477E



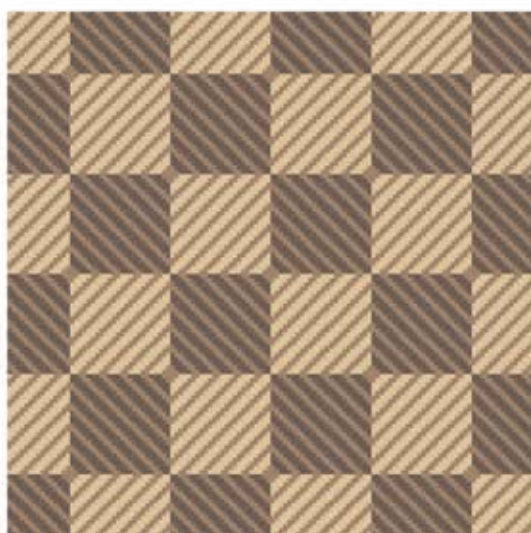
Width 4.00m Match 0.57m S/M

Code LW012577F



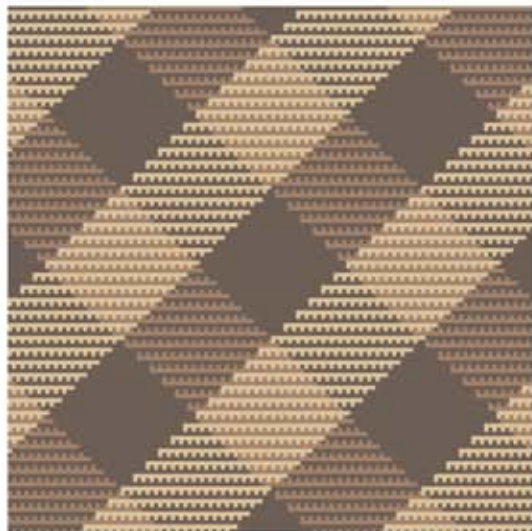
Width 4.00m Match 0.09m S/M

Code LW012677F



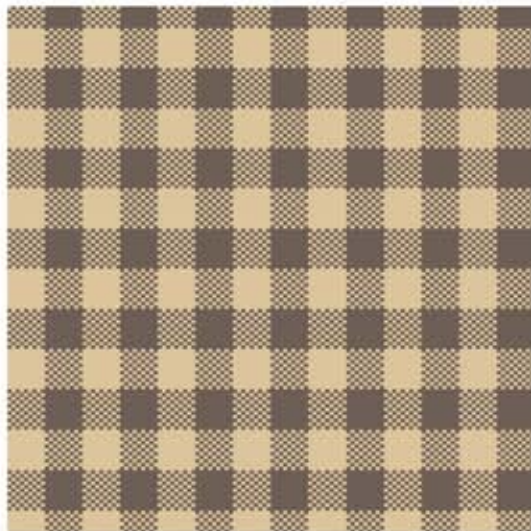
Width 4.00m Match 0.16m S/M

Code LW012777E



Width 4.00m Match 0.20m S/M

Code LW012878B



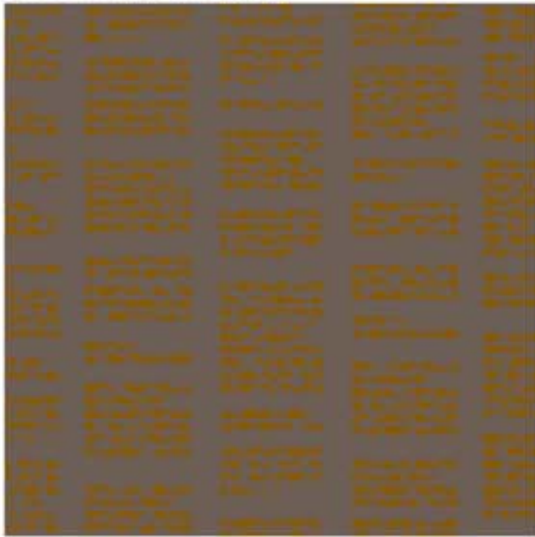
Width 4.00m Match 0.28m S/M

Grey & Nutmeg



Code LW009578E Width 4.00m Match 0.61m S/M

Code LW012977F



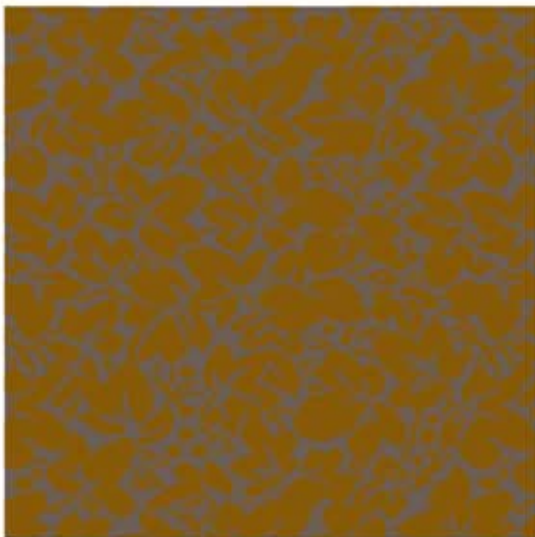
Width 4.00m Match 0.68m S/M

Code LW013277E



Width 4.00m Match 0.30m H/D

Code LW013179F



Width 4.00m Match 0.37m S/M

Code LW013378B



Width 4.00m Match 0.10m S/M

Code LW013477F



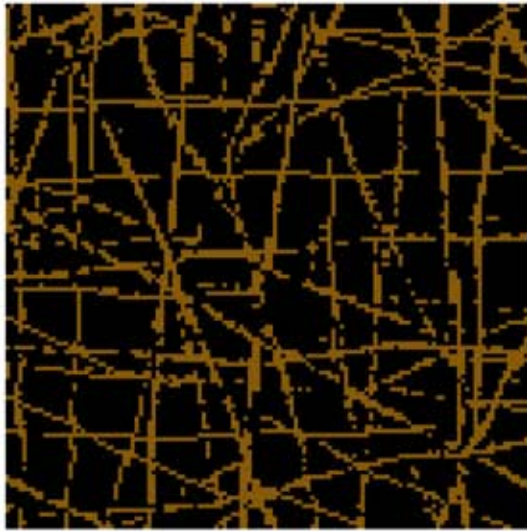
Width 4.00m Match 0.33m S/M

Nutmeg & Black



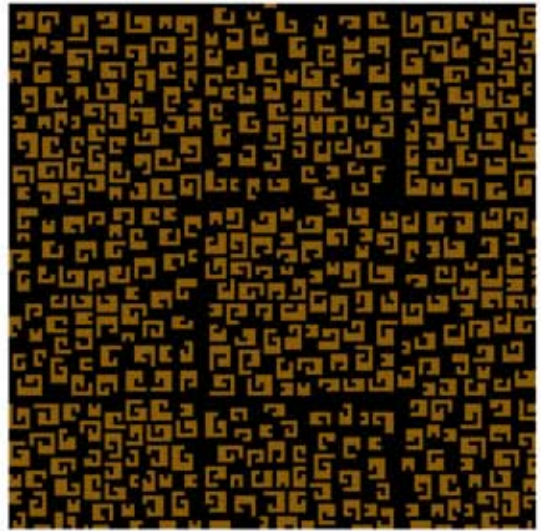
Code LW014877F Width 4.00m Match 1.00m S/M

Code LW015277E



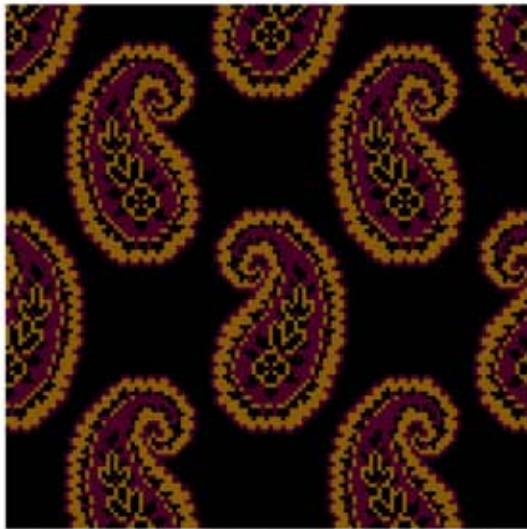
Width 4.00m Match 0.78m H/D

Code LW015177A



Width 4.00m Match 0.68m S/M

Code LW015077A



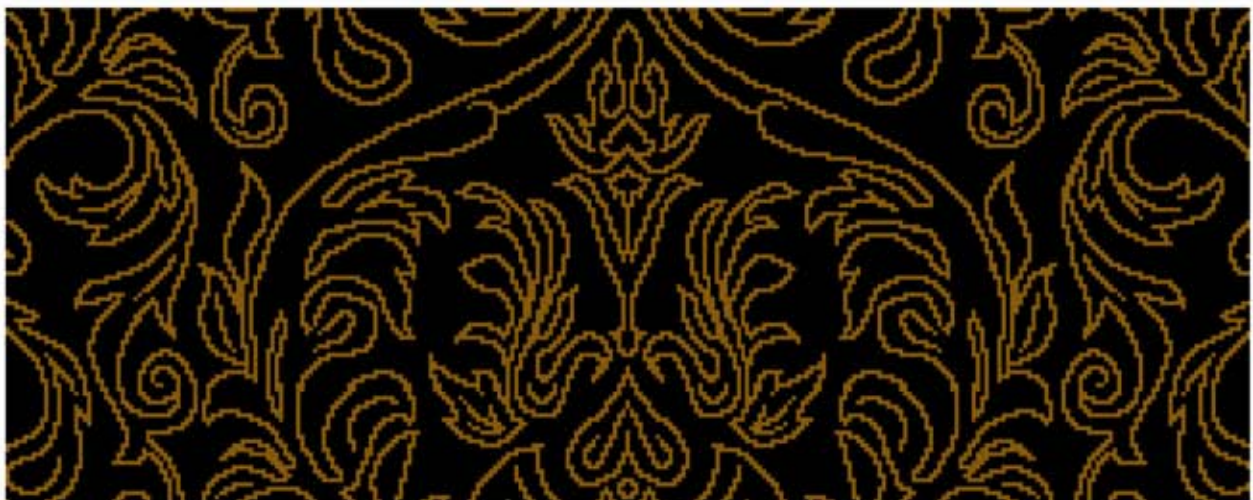
Width 4.00m Match 0.29m S/M

Code LW014977B



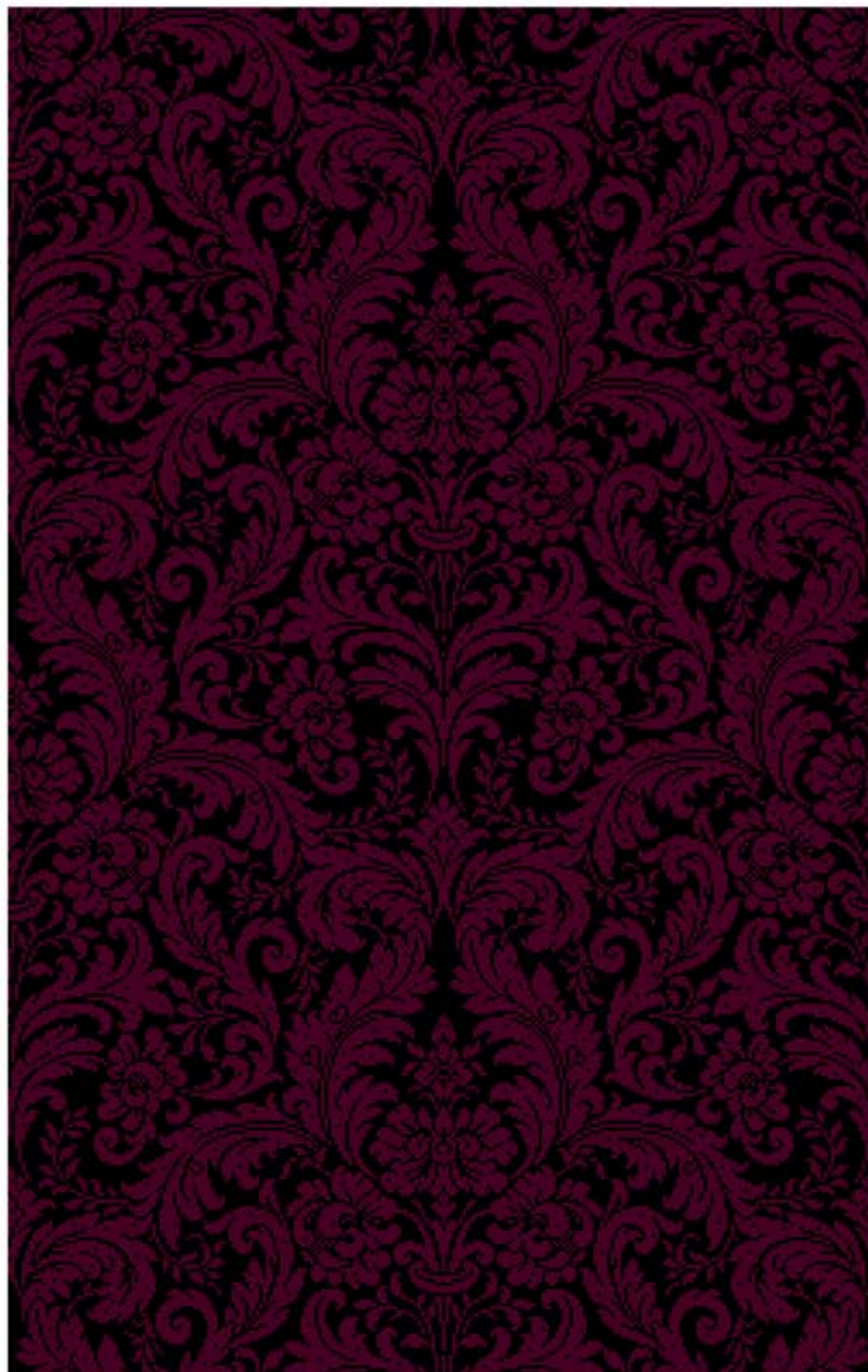
Width 4.00m Match 0.20m H/D

Code LW014277E



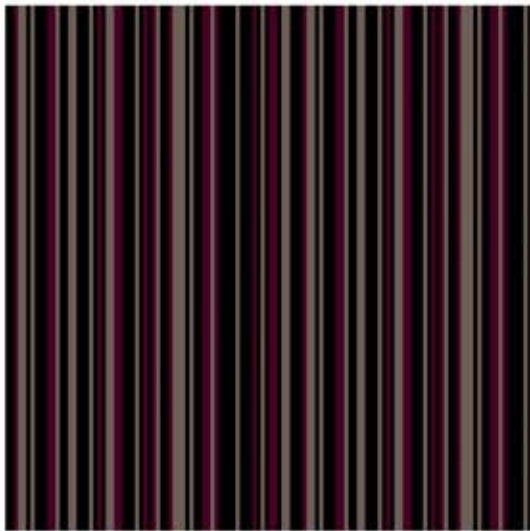
Width 4.00m Match 0.69m H/D

Black & Claret



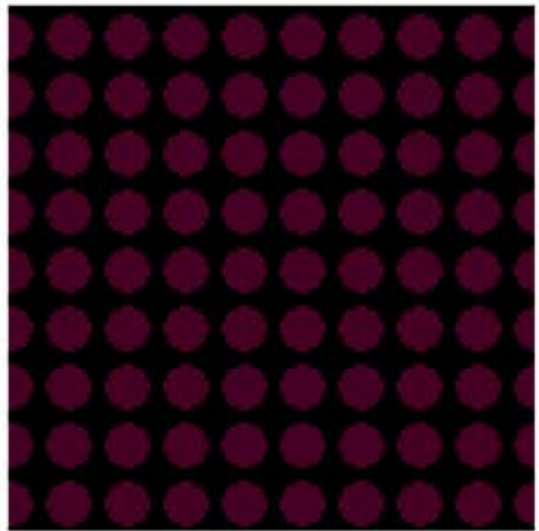
Code LW013577E Width 4.00m Match 0.78m S/M

Code LW014077F



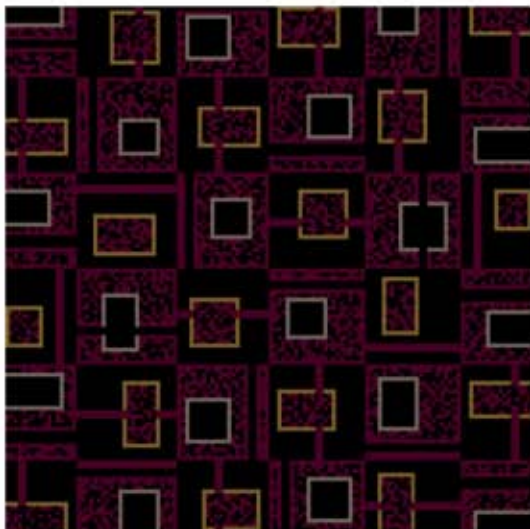
Width 4.00m Match 0.02m S/M

Code LW013777B



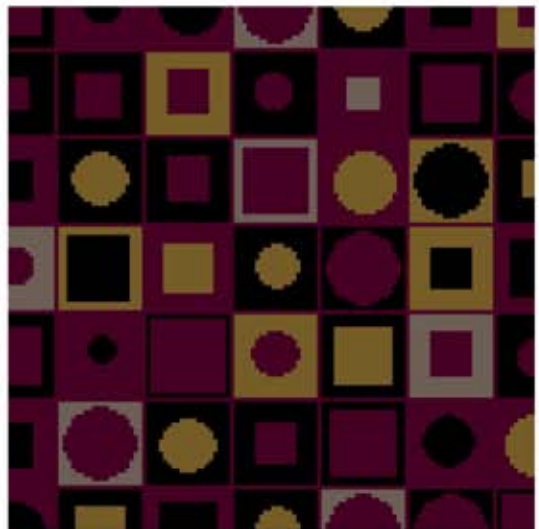
Width 4.00m Match 0.05m S/M

Code LW013677F



Width 4.00m Match 0.67m H/D

Code LW013977A



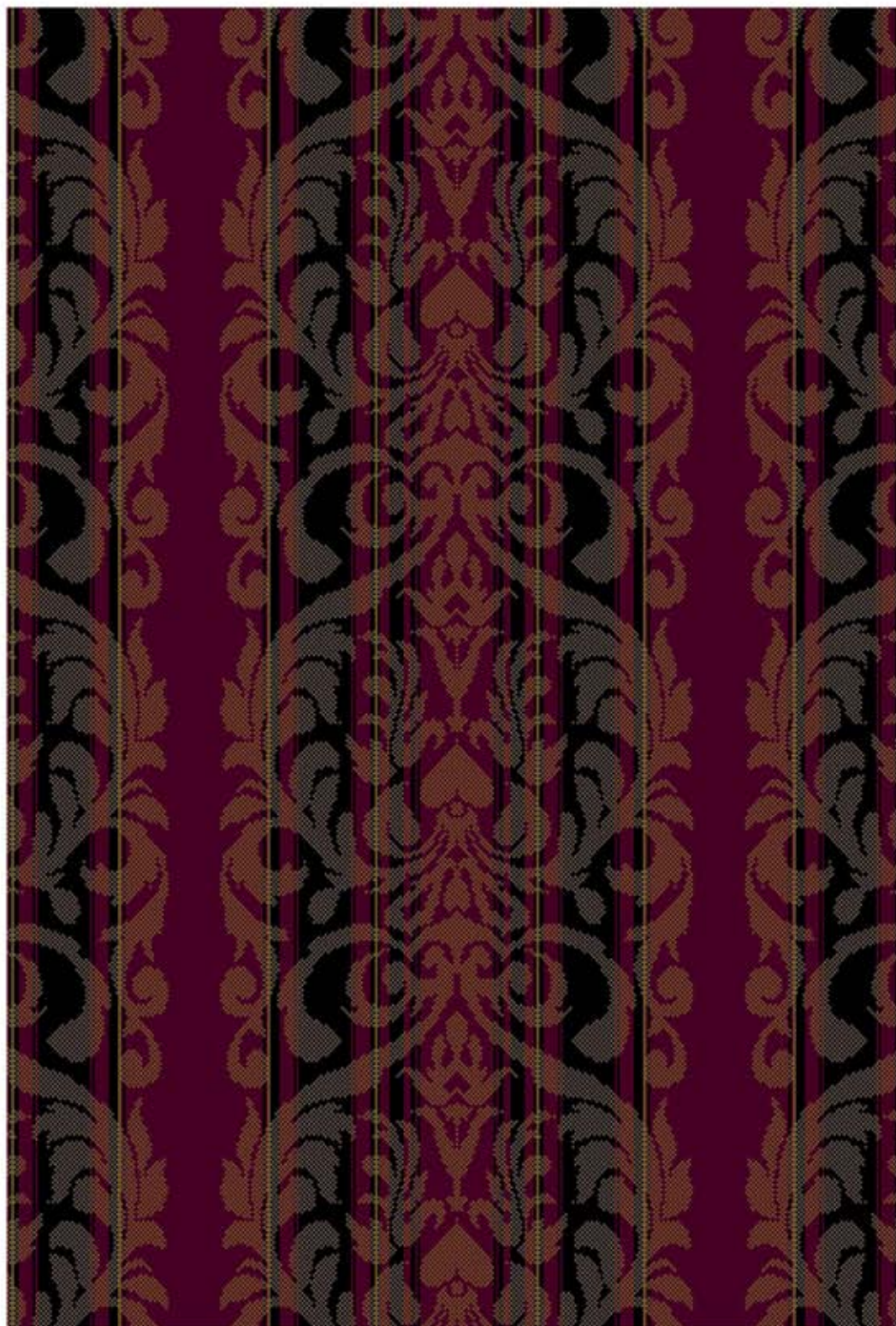
Width 4.00m Match 0.69m S/M

Code LW013877B



Width 4.00m Match 0.91m S/M

Claret & Hemp



Code LW007877B Width 4.00m Match 0.52m S/M

Code LW014777F



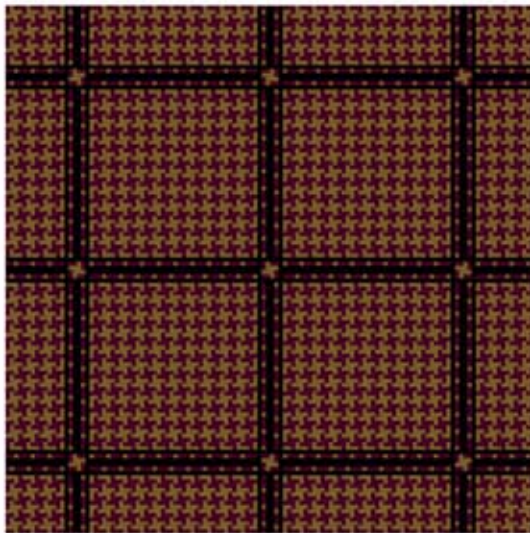
Width 4.00m Match 0.67m S/M

Code LW014677F



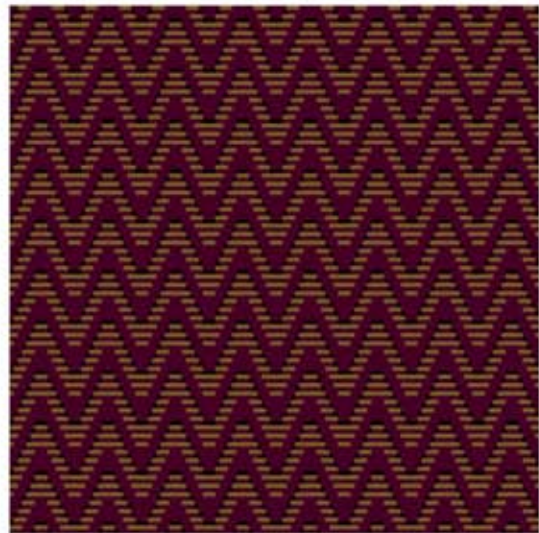
Width 4.00m Match 0.12m H/D

Code LW014577F



Width 4.00m Match 0.33m S/M

Code LW014477F



Width 4.00m Match 0.04m S/M

Code LW014371F



Width 4.00m Match 0.43m H/D

The Infinity Collection - Standard Palette vol II

Quality	Pitch (per inch)	Row (per inch)	Pile Weight (g/msq)	Width (m)	Appearance Class	Luxury rating
Windermere	7	6	920	4	23/32 General Commercial use	LC3
Derwent	7	7	1070	4	33-Heavy Commercial use	LC4
Grassmere	7	8	1225	4	33-Heavy Commercial use	LC4
Coniston	7	9	1380	4	33-Heavy Commercial use	LC4
Ullswater(spike resist)	7	10	1530	4	33-Heavy Commercial use	LC4

quality selection

The qualities detailed in the matrix above represent specifications which should satisfy most commercial requirements. With each particular installation, the decision on which quality is most appropriate will depend on the levels of traffic and the length of time the carpet is expected to be installed.

Gaskell Mackay have many years of experience in these considerations and provide detailed advice on quality selection on a project by project basis. Technical specifications are available on request.

colour and design

Colour and the presence or absence of a pattern can have a significant bearing on the long term appearance retention of the carpet. As a general rule, darker red, brown and grey tones are much less sensitive in displaying soiling than the equivalent blue, green or purple shades. All light colours are dirt sensitive, while highly patterned carpets tend to hide dirt, cigarette burns and stains.

Other aspects will also influence the choice of colour. For example, the light in a building (natural or artificial) can have a dramatic effect on the apparent colour of the carpet. Therefore carpet samples should be viewed under different light sources to ascertain their apparent colours.

planning and estimation service

Using the latest Callidus planning software, Gaskell Mackay can accurately estimate carpet requirements from site plans to any scale. Accurate waste estimations can be readily calculated and adjustments made to minimise this.

One critical area of importance is seam placement. Knowledge of customer flow through the area is used to guide the fitter in the careful positioning of seams to avoid premature wear. The planning and estimation service is free.

samples

Samples of all the designs and colourways illustrated (along with many others) can be obtained and are usually available within 72 hours.

installation

The 'Infinity' range of carpet qualities which includes Windermere, Derwent and Coniston are produced on a revolutionary new, high speed axminster loom and are woven without a traditional selvedge. The selvedge is trimmed during manufacturing as close as possible to the pile. Normally this allows the carpet to be joined without necessity for further trimming of the selvedge. The uniquely formed selvedge may however be trimmed by the installer if he feels the carpet has not been trimmed sufficiently to the pile and would leave a gap after seaming. Fusible yarns are woven into the selvedge to provide extra pile anchorage.

It is essential to seal the back of the carpet before cutting, particularly on cross cuts and then seal the cut edge to prevent fraying. The carpet may be seamed with heat seaming tape or electro-seaming tape (e.g. 'Silvaseam'). The carpet may be hand sewn if this is specified for border work after the carpet has been sealed and cut.

In all other respects the carpet should be installed in accordance with BS5325 (Code of Practice for the Installation of Textile Floorcoverings) and NICF Carpet Installation Manual by a trained axminster carpet installer.

There are a number of ways in which the 'Infinity' range of Gaskell Mackay qualities can be installed including stretch fitted over a suitable contact underlay on to gripper, full adhesion to a prepared subfloor or installed on double stick underlay systems. Installation on double stick underlay systems should be in accordance with the recommendations issued by Gaskell Mackay Carpets Ltd.

maintenance

Effective dirt barrier systems must be fitted in footwells in, or immediately adjacent to external entrances. Carpet maintenance must be carefully planned and this plan implemented from the moment the carpet is installed.

Maintenance methods and levels must be tailored to foot traffic intensity to prevent both inadequate or unnecessary cleaning. A cleaning schedule usually includes three levels of cleaning.

1. Regular maintenance (Daily vacuum cleaning and spot removal).
2. Intermediate "wet" cleaning or surface brightening.
3. Deep or restorative "wet" cleaning.

Depending on how effective the regular (usual daily) maintenance is, then intermediate cleaning will have to be used eventually. Effective intermediate cleaning can often postpone the need for restorative cleaning, all of which will save maintenance costs. Correct and regular maintenance will also be cost effective by increasing the lifespan of the carpet.

The above information on installation and maintenance provides general guidelines and full details on these subjects can be obtained by contacting the Contract Sales Desk on 01429 892525 or . E-MAIL sales@gaskell.co.uk



HERITAGE, BEAUTY, SERVICE

www.gaskell.co.uk