

# HUGH MACKAY carpets

Quality Carpets Since 1903

# Inn Style

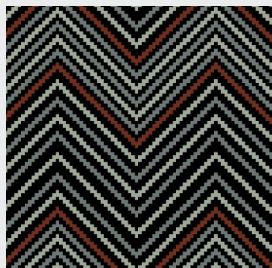
Made from 80% Wool



  
TUGH MACKAY  
carpets

# Inn Style

Choose from 10 designs



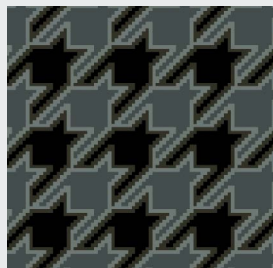
Essen

Pattern Repeat:  
W: No match 4m repeat  
x L: 26.1cm



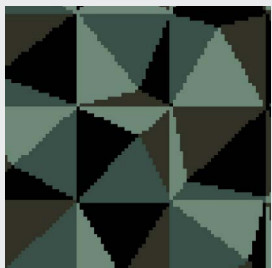
Elva

Pattern Repeat:  
W: 50cm x L: 38.8cm



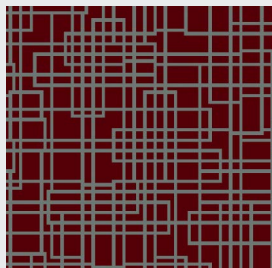
Savoy

Pattern Repeat:  
W: 33cm x L: 33.4cm



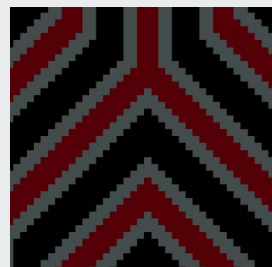
Foil

Pattern Repeat:  
W: 133cm x L: 58.8cm



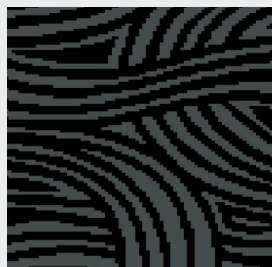
Maze

Pattern Repeat:  
W: 66cm x L: 76.2cm



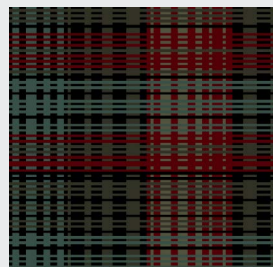
Geno

Pattern Repeat:  
W: 100cm x L: 85.6cm



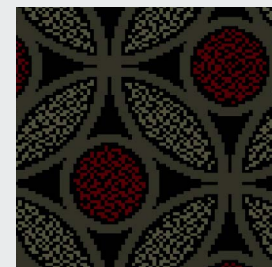
Mistral

Pattern Repeat:  
W: 66cm x L: 51.9cm



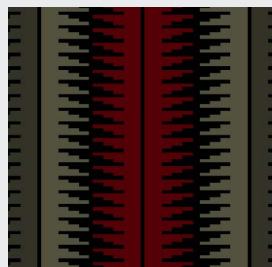
Derby

Pattern Repeat:  
W: 200cm x L: 125.2cm



Circo

Pattern Repeat:  
W: 200cm x L: 68.9cm



Rhode

Pattern Repeat:  
W: 33cm x L: 39.2cm

Hugh Mackay Carpets  
Part of The Mackay Group  
T: 01429 892555  
E: sales@hughmackay.co.uk  
W: www.hughmackay.co.uk

  
**HUGH MACKAY**  
carpets

# Inn Style

## Specification Details

Specification	
Construction:	Woven Axminster
Texture:	Cut Pile Velour
Pitch:	7 per inch/27.6 per dcm
Rows:	7 per inch/27.6 per dcm
Pile Weight/Total Weight:	1070g/m2 / 1900g/m2
Backing:	Woven Polyester/Polypropylene
Tuft Density per m2	76,176
Pile Yarn Content:	80% Wool, 20% Nylon
Pile Height:	7mm
Yarn Count & Tex	2/47's, R660 tex
Width:	4m

Tested for	
<u>Suitability</u>	
Heavy Domestic/ General commercial	Class 23/32 BS EN 1307:2005
<u>Flammability</u>	
Fire behaviour: CFL	(in accordance with clause 11
Smoke production : S1	of EN 13501-1-2002)
Low radius of char	(BS4790 BS5287)
<u>Castor Chair</u>	
Not recommended unless protecting mat is present.	
<u>Suitability for Stairs:</u>	
Yes (For maximum performance	(in accordance with BS EN1307)
we recommend the use of an approved stair nosing and the movement of carpet every 6 months from tread to rise)	

General Information
<p><b>Pile reversal:</b> All cut pile carpets can suffer from pile reversal and in certain instances this may become permanently bent or distorted for no specific reason that research has yet identified, giving areas of light and shade. This is also known as "shading" or "watermarking". It is not a defect in manufacture, it only occurs in a small percentage of all carpets and no liability whatsoever can be accepted by the manufacturer in respect of it.</p> <p><b>Pile pressure:</b> All cut pile carpets are liable to show light and dark patches resulting from disturbance of the pile created by foot traffic or brushing, This is a normal feature and is not a defect in manufacture and no liability whatsoever can be accepted by the manufacturer in respect of it.</p> <p><b>Pale shades:</b> We include within our collection a number of pale shades. Primarily these are used as top or highlight colours. These more delicate shades will invariably tend to soil more quickly and give a lower of light fastness than the norm, and may show natural blemishes within the fibre that tend to be masked in deeper shades containing a greater quantity of dyestuff.</p>

Maintenance
<p>Hugh Mackay recommend that this carpet is maintained in accordance with an agreed maintenance schedule which should include the following:</p> <ul style="list-style-type: none"> <li>i). Vacuum regularly.</li> <li>ii). Remove spills immediately.</li> <li>iii). Professionally clean as required.</li> </ul>

Features
<p>Available in 4m broadloom only. Regular Nationwide delivery service</p> <p>Fashionable colours to meet a wide variety of interior styles. Ease of maintenance. Available from stock</p>

Installation
<p>To be installed in accordance with BS5325 "Code of Practice for the Installation of Floor Coverings" and NICF manual.</p> <p>For quantity orders requiring colour matching, please state at the time of ordering.</p> <p>All samples may not be from the same production batch as current stock and therefore should be used as a guide and not as an exact match.</p> <p>Colour variations: There may be colour variations/shade variations between each batch of carpet as well as with undyed materials.</p> <p>Undyed Wool: Due to the inherent natural variations in undyed wool and the current blending techniques, there may be noticeable shade variations between the colours used in the same material and the actual production. Pattern match cannot be guaranteed with any tufted patterned carpet.</p>

**Hugh Mackay Carpets**  
 Part of The Mackay Group  
 T: 01429 892555  
 E: sales@hughmackay.co.uk  
 W: www.hughmackay.co.uk



**HUGH MACKAY**  
 carpets