



# METROPOL

THE TUFTED COLLECTION



Gaskell Mackay Carpets Limited presents its  
definitive collection of tufted graphics designs...

# METROPOL

Metropol represents the culmination of more than 30 years of manufacturing excellence within the tufted graphics product field. This expansive collection of designs presented in contemporary colours provides our customers with access to cost effective finishes which, when coupled with complementary designs from our axminster collections facilitates the creation of truly stunning interiors.

Typically our custom tufted options are supplied utilizing yarn blends of 80% wool / 20% nylon in either velvet or twist finishes. A broad spectrum of pile weights and machine gauges are available to suit all types of end use. All of our tufted qualities are tested to the latest International quality standards.

The design is the copyright of Gaskell Mackay Carpets Limited and may not be reproduced without their written permission. Due to the limitations of the printing process, we are unable to guarantee an exact colour reproduction of these designs. Gaskell Mackay reserve the right to change any of the specifications without prior notice. E.O.E.  
Copyright Gaskell Mackay Carpets Limited 2009



Gaskell Mackay Carpets Ltd  
View Logistics, Park View Road East, Hartlepool, TS25 1PG  
t: +44 (0) 1429 892525 f: +44 (0) 1429 892530  
e: [info@gaskell.co.uk](mailto:info@gaskell.co.uk) [www.gaskell.co.uk](http://www.gaskell.co.uk)



ITUF-2000



ITUF-2002



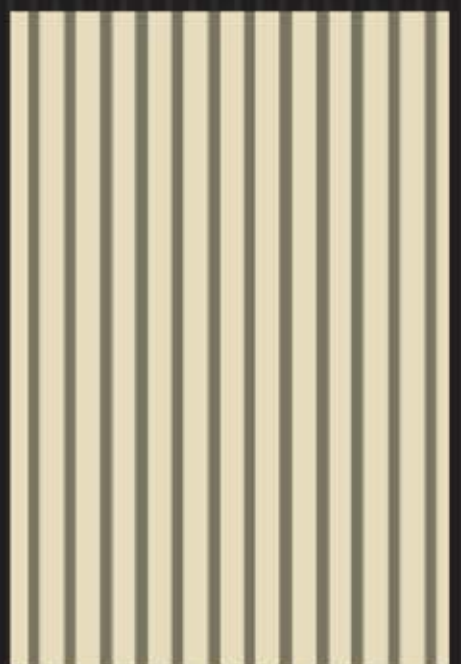
ITUF-2004



ITUF-2001



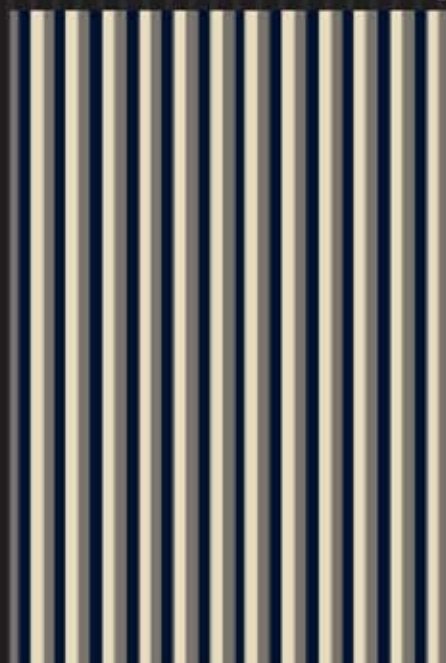
ITUF-2003



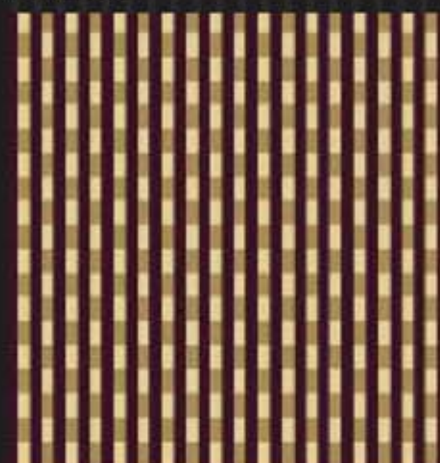
ITUF-2005



ITUF-2006



ITUF-2007



ITUF-2008



ITUF-2009



ITUF-2010



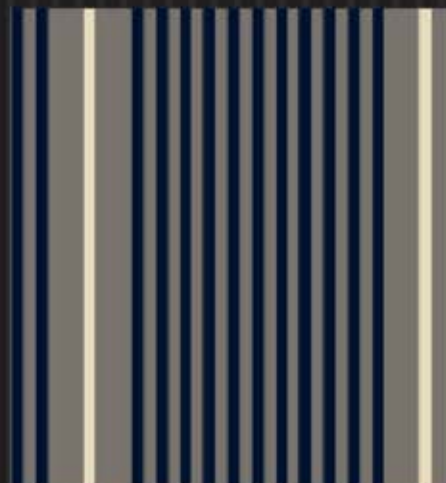
ITUF-2011



ITUF-2016



ITUF-2012



ITUF-2013



ITUF-2014



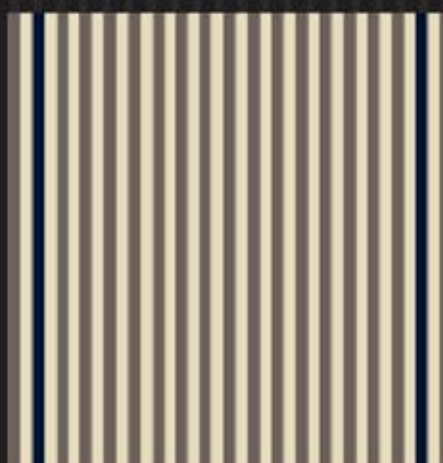
ITUF-2015



ITUF-2016



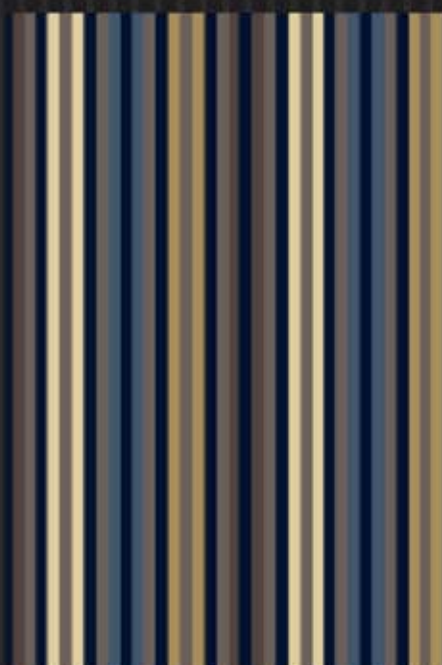
ITUF-2017



ITUF-2019



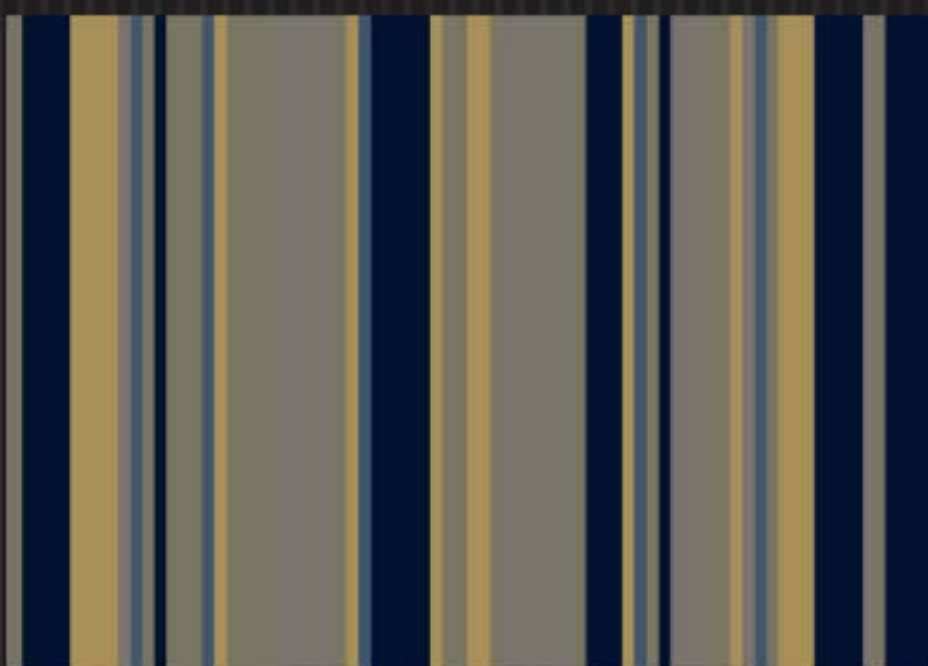
ITUF-2021



ITUF-2020



ITUF-2018



ITUF-2022



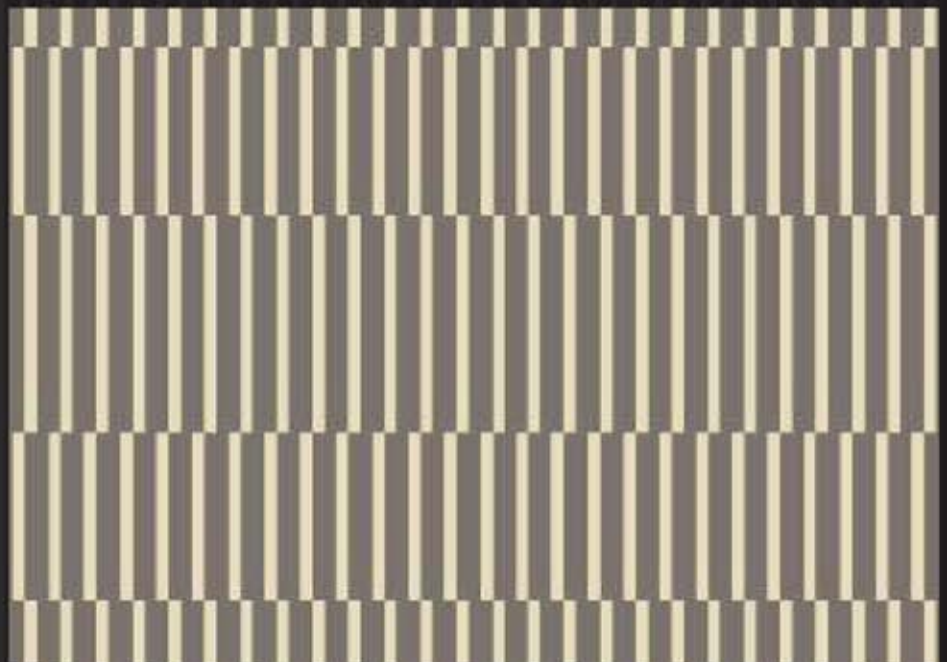
ITUF-2023



ITUF-2024



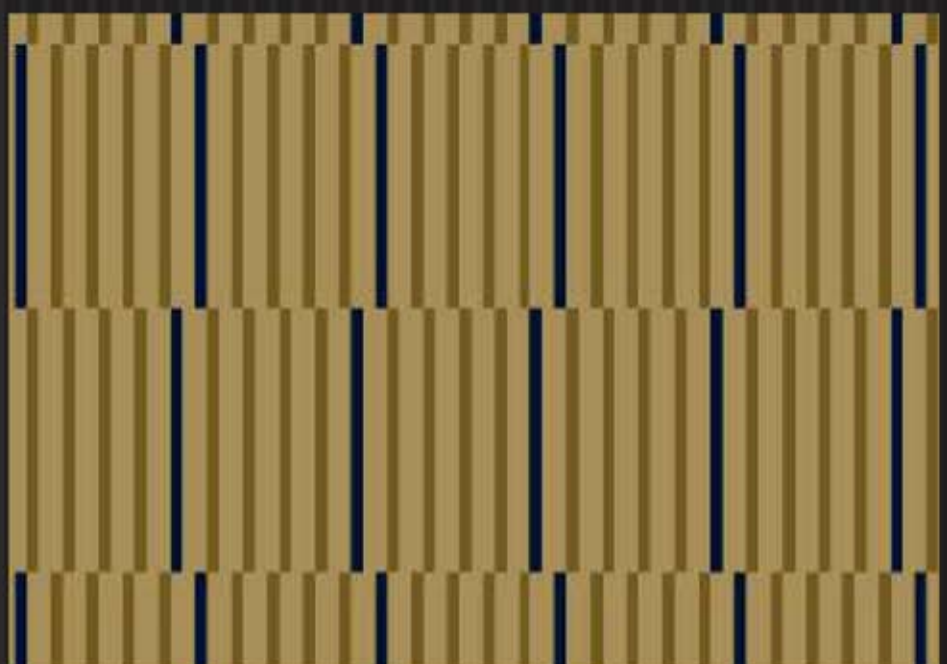
ITUF-2025



ITUF-2026



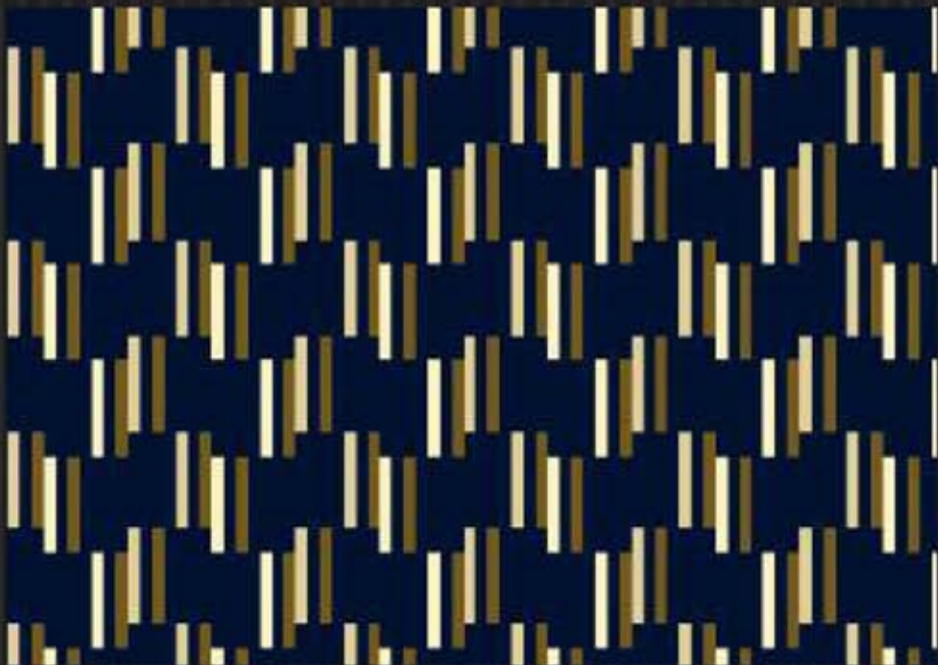
ITUF-2027



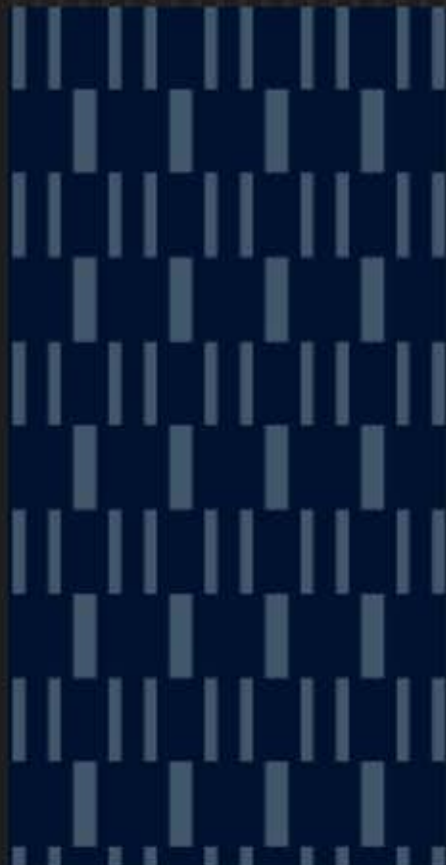
ITUF-2028



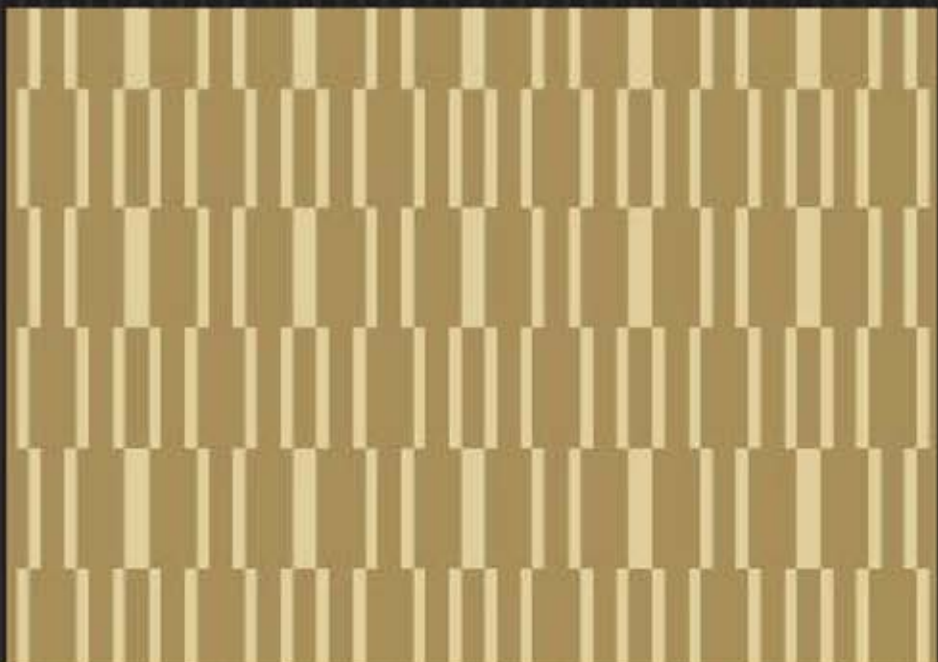
ITUF-2031



ITUF-2034



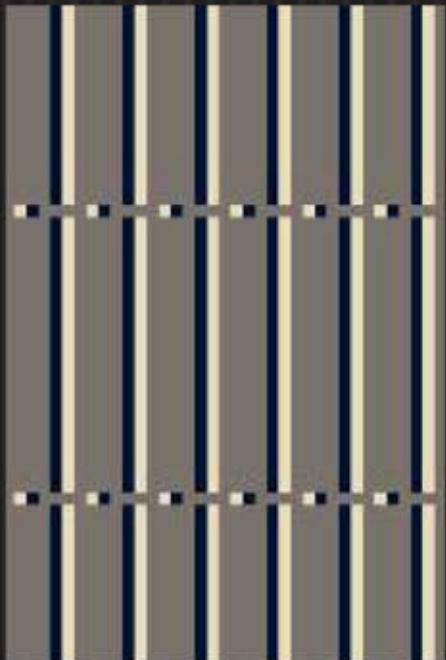
ITUF-2033



ITUF-2032



ITUF-2029



ITUF-2030





ITUF-2035



ITUF-2037



ITUF-2038



ITUF-2036



ITUF-2039



ITUF-2040



ITUF-2041



ITUF-2042



ITUF-2043



ITUF-2044



ITUF-2041



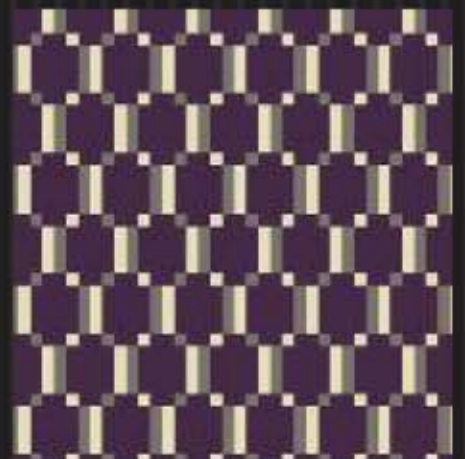
ITUF-2045



ITUF-2046



ITUF-2047



ITUF-2048



ITUF-2049



ITUF-2050



ITUF-2051



ITUF-2052



ITUF-2053



ITUF-2054



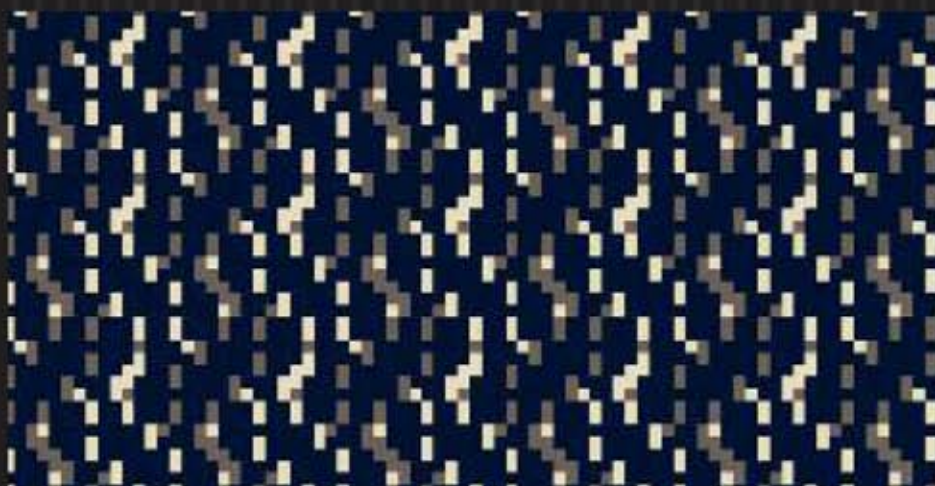
ITUF-2055



ITUF-2056



ITUF-2057



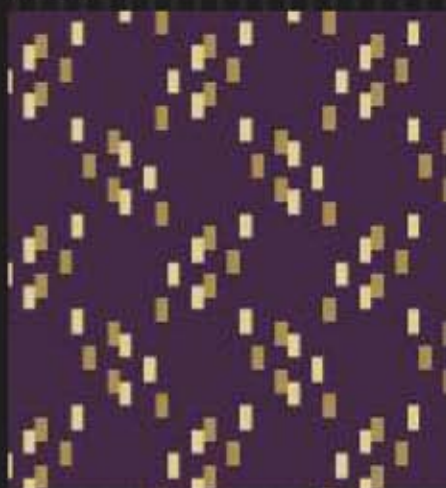
ITUF-2058



ITUF-2059



ITUF-2060



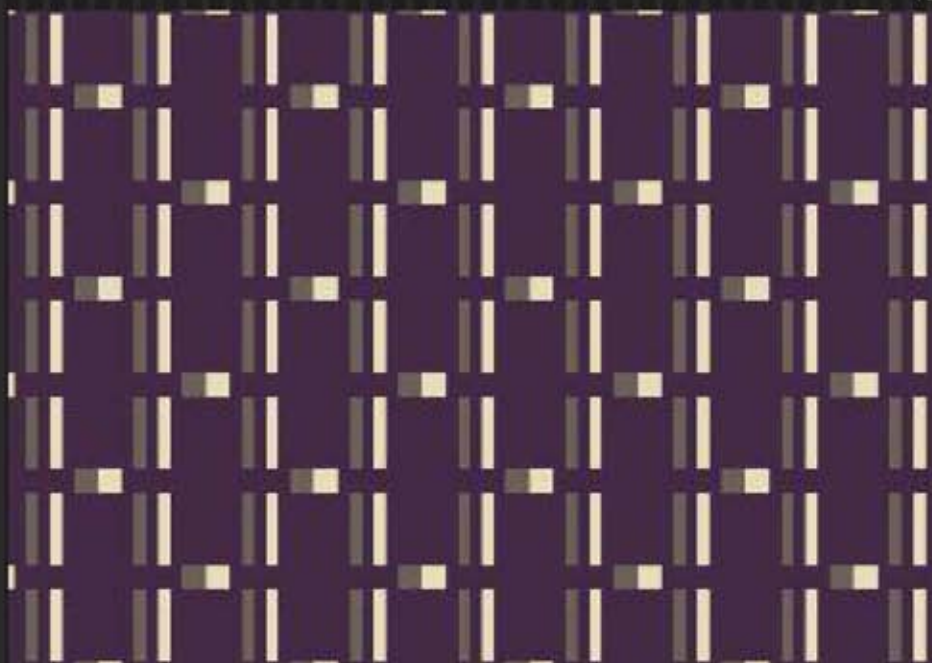
ITUF-2061



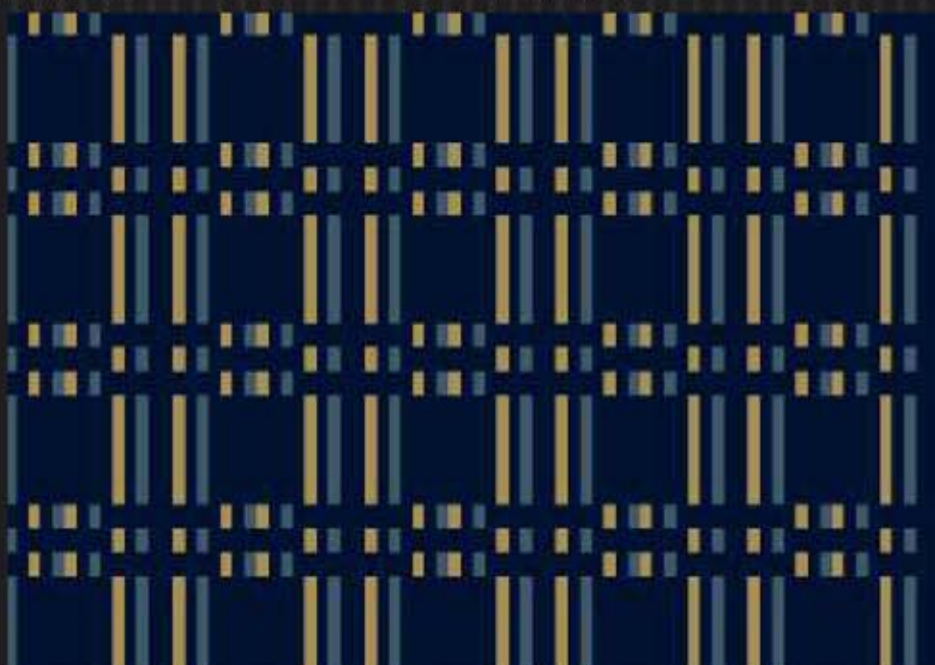
ITUF-2062



ITUF-2063



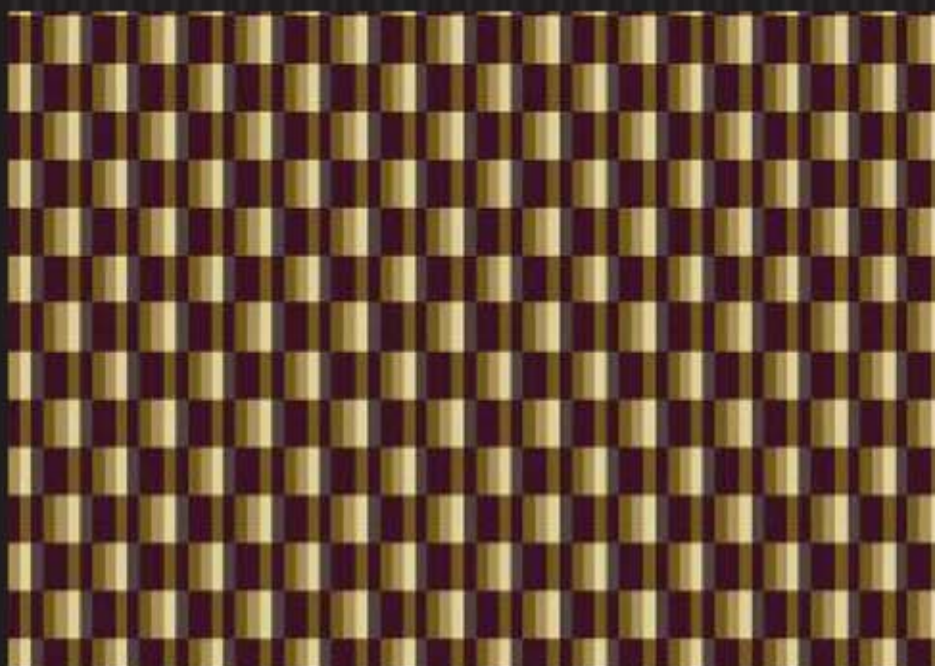
ITUF-2064



ITUF-2065



ITUF-2066



ITUF-2067



ITUF-2068



ITUF-2069



ITUF-2070



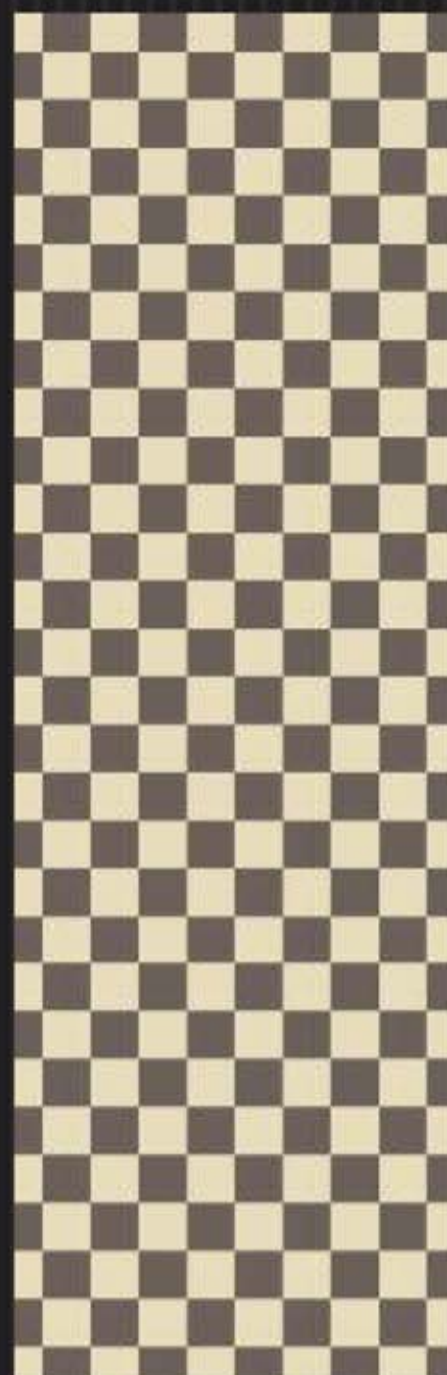
ITUF-2071



ITUF-2072



ITUF-2074



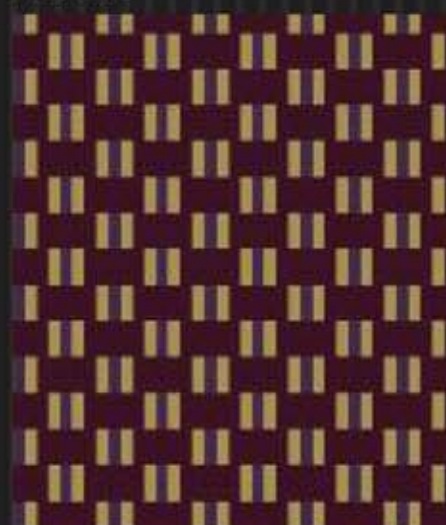
ITUF-2073



ITUF-2071



ITUF-2075



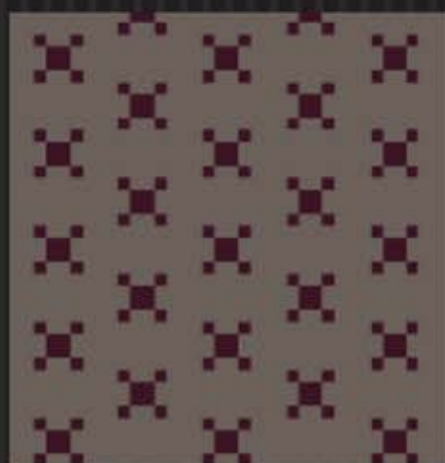
ITUF-2076



ITUF-2077



ITUF-2078



ITUF-2079



ITUF-2080





ITUF-2081



ITUF-2082



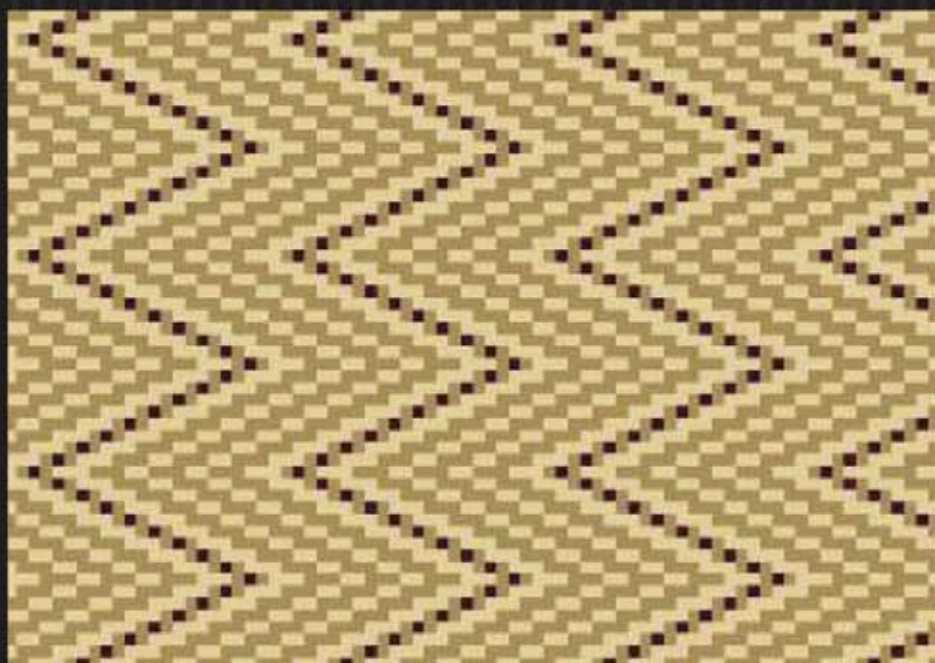
ITUF-2083



ITUF-2084



ITUF-2085



ITUF-2086



ITUF-2087



TUF-2088



ITUF-2089



ITUF-2090



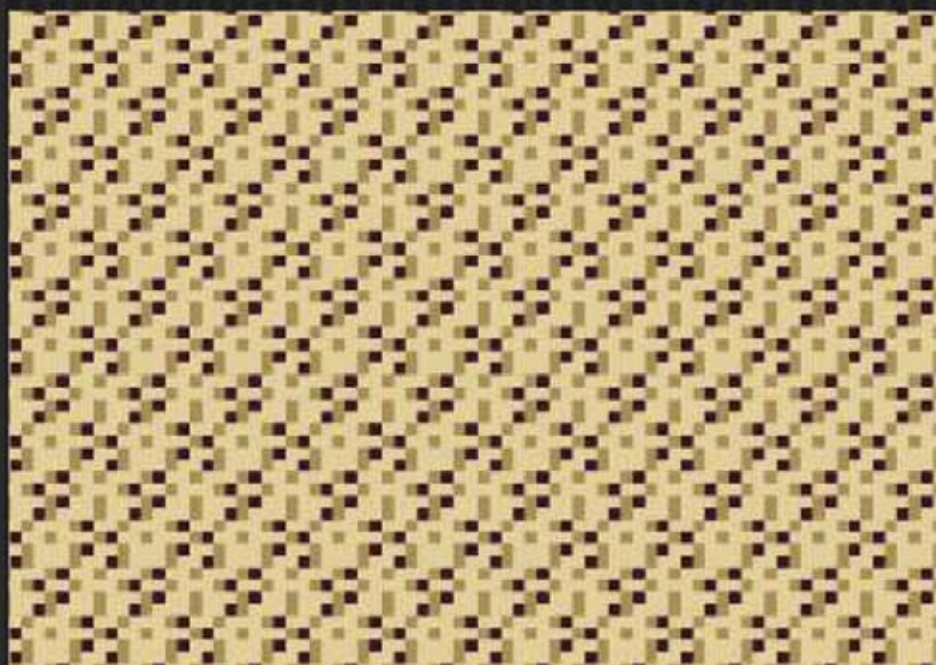
ITUF-2091



ITUF-2092



ITUF-2093



ITUF-2094



ITUF-2095



ITUF-2096



ITUF-2097



ITUF-2098



ITUF-2099



ITUF-2100



ITUF-2101



ITUF-2091

# SPECIFICATIONS & MAINTENANCE

## General Specification Details

Technical Information		
Construction	Graphics Patterned Tufted	
Yarn Composition	80% British Wool / 20% Nylon	
Yarn Count	2/55's (R565/2 Tex)	
Backing	Jute	
Gauge	1/8th	
Pile Height	6.5mm	
Pile Weight	1000g/m <sup>2</sup> (29.5oz/yd <sup>2</sup> )	Medium Contract
	1085g/m <sup>2</sup> (32 oz/yd <sup>2</sup> )	Medium Contract
	1153g/m <sup>2</sup> (34oz/yd <sup>2</sup> )	General Contract
	1220g/m <sup>2</sup> (36oz/yd <sup>2</sup> )	Heavy Contract
	1288g/m <sup>2</sup> (38oz/yd <sup>2</sup> )	Heavy Contract
	1356g/m <sup>2</sup> (40oz/yd <sup>2</sup> )	Heavy Contract
	1424g/m <sup>2</sup> (42oz/yd <sup>2</sup> )	Heavy Contract
	1550g/m <sup>2</sup> (46oz/yd <sup>2</sup> )	Heavy Contract
Flammability	BS EN 13501-1 / C(fl) – s1	

*The above specification table represents only 1/8th gauge constructions with velvet yarns, other options are available including alternative machine gauge's, yarn finishes and backing types. For further advice or information on these alternatives please contact either our head office or your local representative details of which can be found at [www.gaskell.co.uk](http://www.gaskell.co.uk)*

## Sample

Samples of all the designs and colourways illustrated can be produced in the form of "Kibby" carpet samples (to represent colour and design only). These are usually available within 72 hours.

Please note that whilst every effort is made to accurately replicate designs in a Kibby format, this is not fully representative of the finished tufted product. Some allowance therefore must be made to take account of the visual differences which will vary depending on the design selected.

## Custom Colour

All the designs shown in this presentation can be recoloured using Gaskell Mackay's computer print facility. This highly sophisticated colour print system is ideally suited to the generation of prints for designer's presentation boards. By quoting the Gaskell Mackay colour reference, prints in A4 format can be forwarded either in PDF format via e-mail or alternatively by post.

The carpet illustrations shown in this presentation are as accurate as the limitations of the printing process used. All designs are the copyright of Gaskell Mackay Carpets Limited and may not be reproduced without their written consent.

## Pattern Matching

Where graphics tufted carpets are to be laid in multi width installations an accurate pattern match cannot be guaranteed due to the limitations of the manufacturing process. Particular consideration must be given to seam locations as a result.

# SPECIFICATIONS & MAINTENANCE

## Quality Selection

The qualities detailed represent specifications which should satisfy most commercial requirements. With each particular installation, the decision on which quality is most appropriate will depend on the levels of traffic, colour and design as well as the length of time the carpet is expected to be installed.

Gaskell Mackay have many years experience in these considerations and can provide detailed advice on quality selection on a project by project basis.

## Planning and Estimation Service

Using the latest Callidus planning software, Gaskell Mackay can accurately estimate carpet requirements from site plans to any scale. Accurate estimations can be calculated and adjustments made to minimise wastage.

One critical area of importance is seam placement. Knowledge of customer flow through the building is used to guide the installer in the careful positioning of seams to avoid premature wear.

## General Installation Recommendations

All patterned tufted carpets should be installed in accordance with BS5325 : 2001 Installation of Textile Floorcoverings and NICF Manual detailing industry best practice.

## General Maintenance Recommendations

Gaskell Mackay Carpets recommend that this carpet is maintained in accordance with an agreed maintenance schedule which should include the following:

- Vacuum regularly •
- Remove spills immediately •
- Professionally clean as required •

## Pile Reversal

All cut pile carpets can suffer from pile reversal and in certain instances this may become permanently bent or distorted for no specific reason that research has yet identified, giving areas of light and shade. This is also described as "shading" or "watermarking". It is not a defect in manufacture; it only occurs in a small percentage of all carpets and no liability whatsoever can be accepted by the manufacturer in respect of it.

## Pile Pressure

All cut pile carpets are liable to show light and dark patches resulting from disturbance of the pile created by foot traffic or brushing. This is a normal feature and is not a defect in manufacture and no liability whatsoever can be accepted by the manufacturer in respect of it.



Gaskell Mackay Carpets Ltd  
View Logistics, Park View Road East, Hartlepool TS25 1PG  
t +44 (0) 1429 892525 f +44 (0) 1429 892530  
e: [info@gaskell.co.uk](mailto:info@gaskell.co.uk) [www.gaskell.co.uk](http://www.gaskell.co.uk)