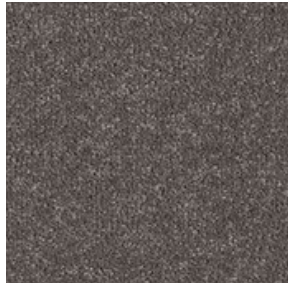


COMING SOON
CALL FOR FURTHER
INFORMATION

Northern Lights



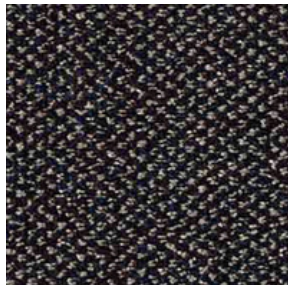
Equinox



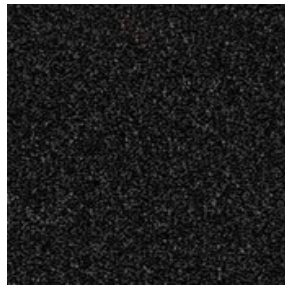
Twilight



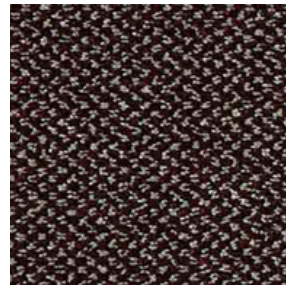
Lunar



Aurora



Nova



Cosmic



Galileo



Eos



Star



Polar

PILE CONTENT:	100% POLYPROPYLENE
CONSTRUCTION:	CUT PILE
BACKING:	IMPERVIOUS (also available in secondary backing as custom order, enquire for lead times)
PILE WEIGHT:	1000G/M2
WIDTH:	4M
TOG RATING:	0.72
SUITABILITY:	HEAVY DOMESTIC / GENERAL CONTRACT
SUITABILITY FOR STAIRS:	YES (subject to the use of approved stair nosing in contract locations)