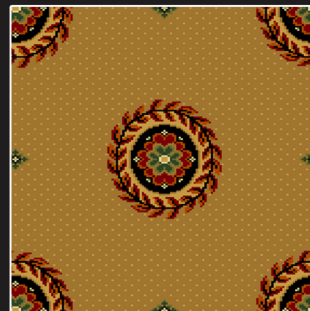
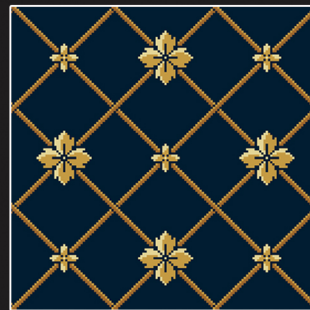
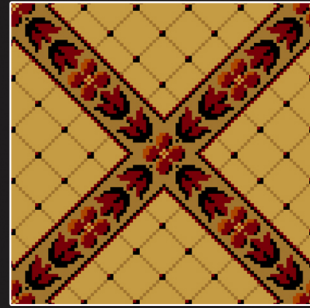


INFINITY SPECTRUM¹ COLLECTION



HERITAGE, BEAUTY, SERVICE

www.gaskell.co.uk

A selection of traditional patterns coloured for the infinity spectrum palette.

Due to the limitations of the printing process, we are unable to guarantee an exact colour reproduction of these designs.

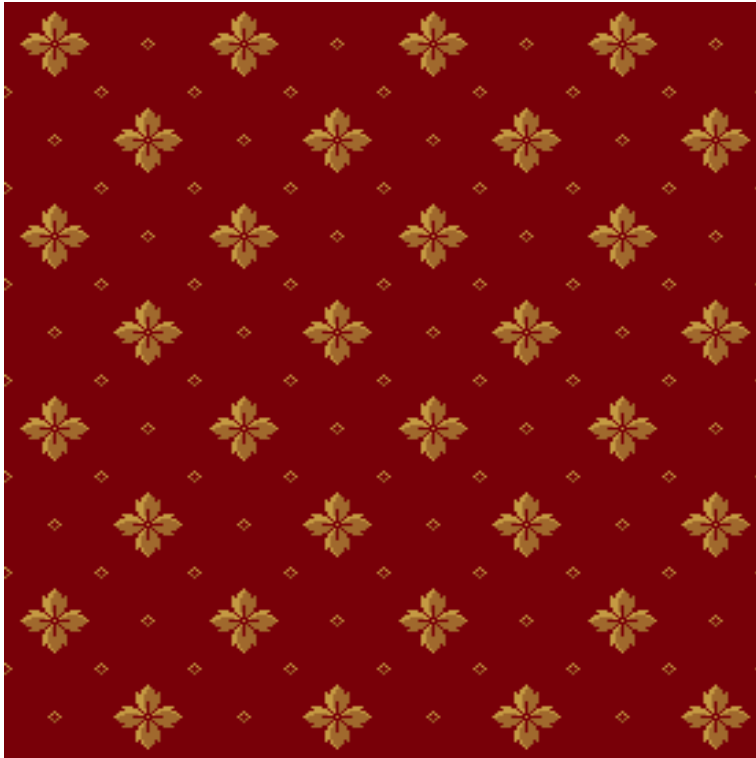
To obtain a more accurate representation of colour please use the colour tufts in the Infinity Tuft Box.

From the spectrum palette

 ivory	 terracotta
 cream	 burgundy
 beige	 dark green
 dark beige	 willow
 light gold	 light green
 dark gold	 navy
 brown	 sapphire
 red	 black

Abbey

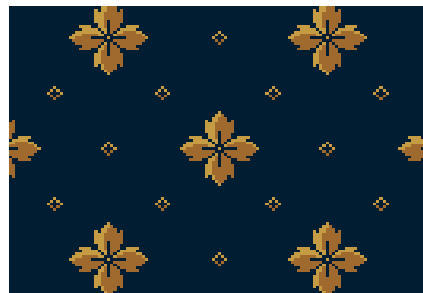
Pattern Repeat:
Length: 25.4 cm S/M



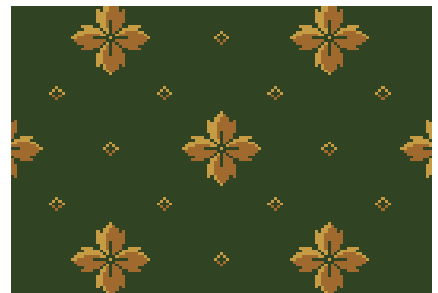
Abbey Red



Abbey Terracotta



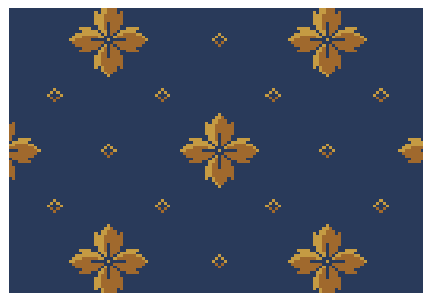
Abbey Navy



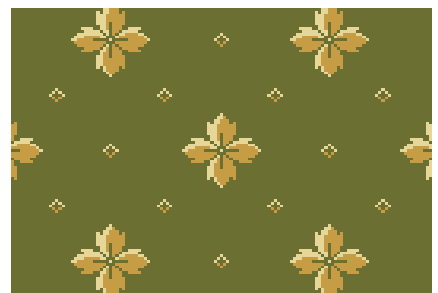
Abbey Dark Green



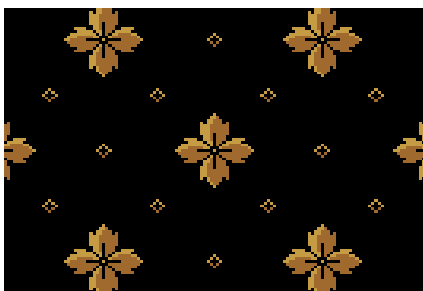
Abbey Dark Gold



Abbey Sapphire



Abbey Green



Abbey Black

Acanthus

Pattern Repeat:
Length: 44 cm S/M



Acanthus Dark Gold



Acanthus Black



Acanthus Dark Green



Acanthus Green



Acanthus Navy



Acanthus Sapphire



Acanthus Terracotta



Acanthus Red

Asfhan

Pattern Repeat:
Length: 96.5 cm S/M



Asfhan Red



Asfhan Black



Asfhan Dark Green



Asfhan Navy

Aztec

Pattern Repeat:
Length:50.1 cm S/M



Aztec Red



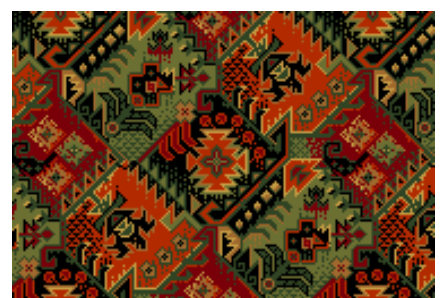
Aztec Gold



Aztec Navy



Aztec Dark Gold



Aztec Black

Bloom

Pattern Repeat:
Length: 91.6 cm S/M



Bloom Black



Bloom Red



Bloom Navy



Bloom Dark Green

Bouquet

Pattern Repeat:
Length:50.8 cm S/M



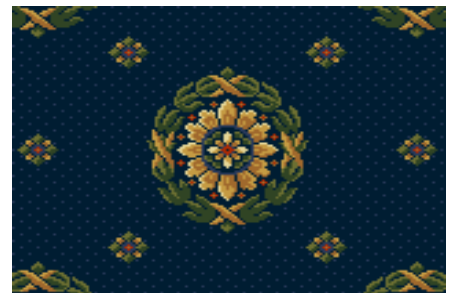
Bouquet Black



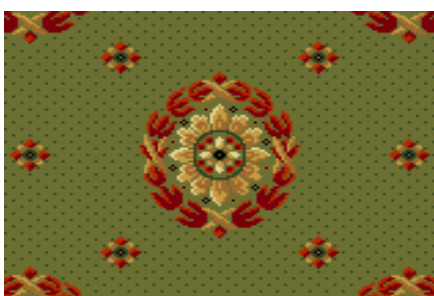
Bouquet Dark Green



Bouquet Red



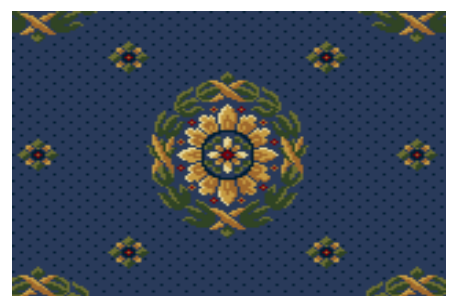
Bouquet Navy



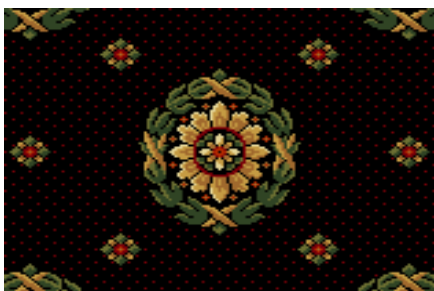
Bouquet Green



Bouquet Terracotta



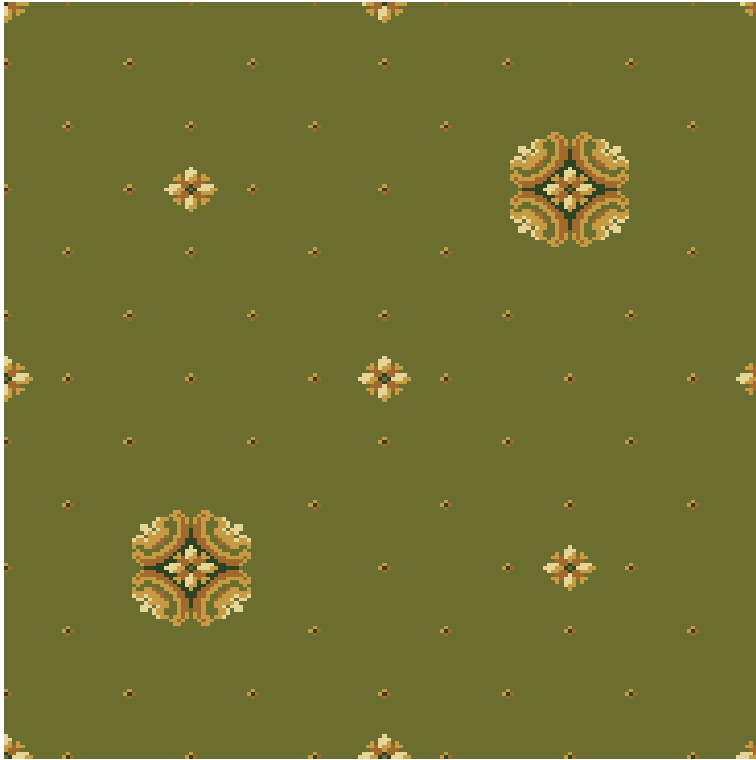
Bouquet Sapphire



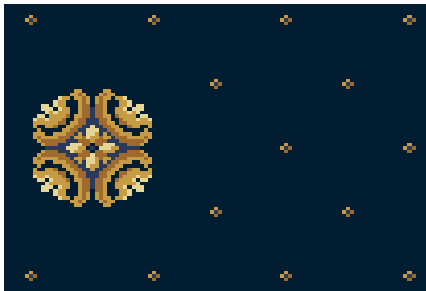
Bouquet Black Green

Brocade

Pattern Repeat:
Length: 68.6 cm S/M



Brocade Green



Brocade Navy



Brocade Red



Brocade Gold Red



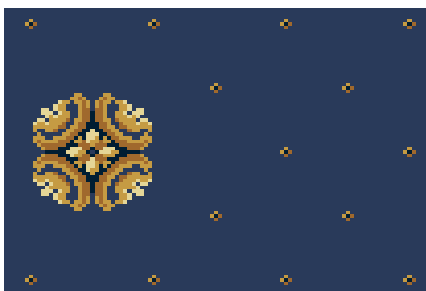
Brocade Terracotta



Brocade Black



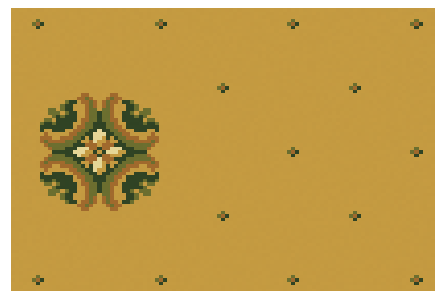
Brocade Dark Gold



Brocade Sapphire



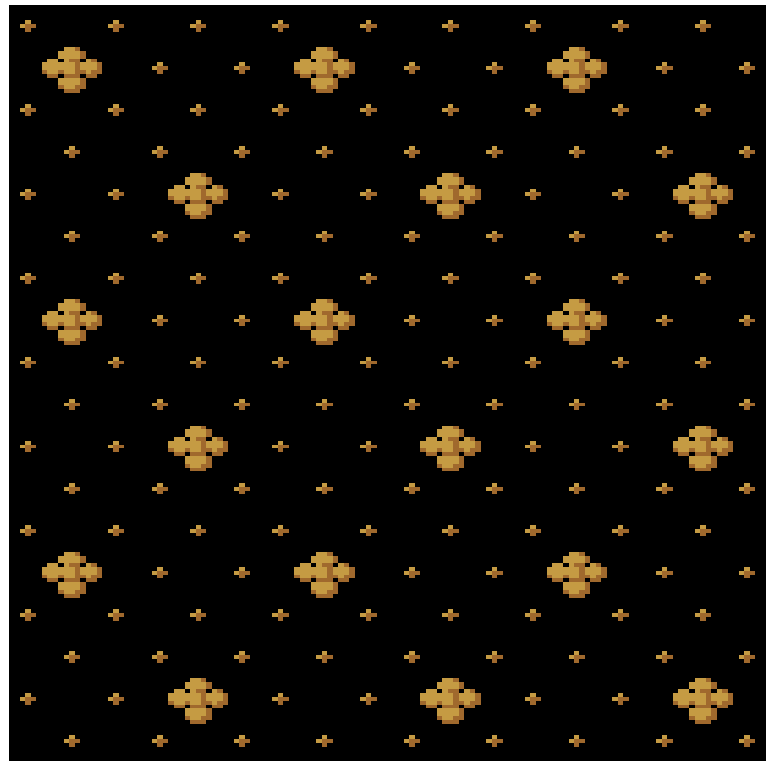
Brocade Dark Green



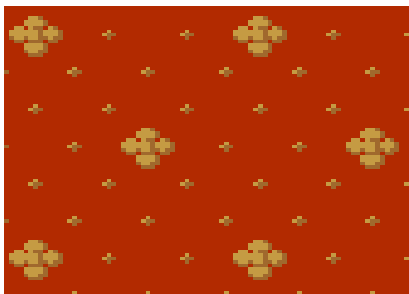
Brocade Gold

Cambridge

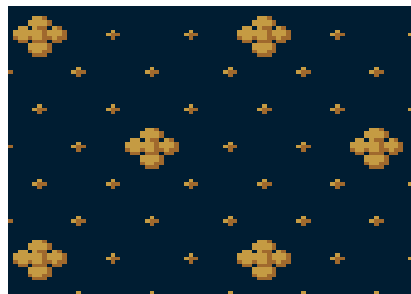
Pattern Repeat:
Length: 16.8 cm S/M



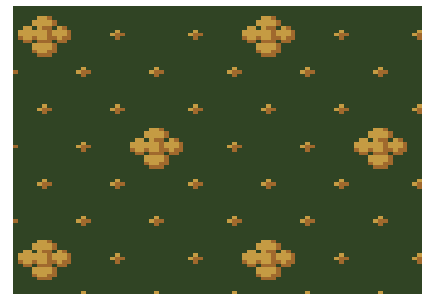
Cambridge Black



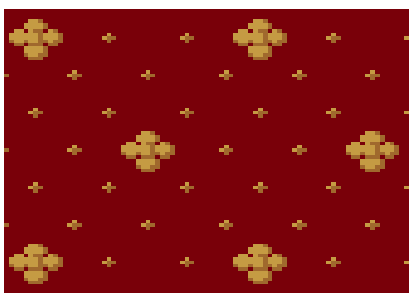
Cambridge Terracotta



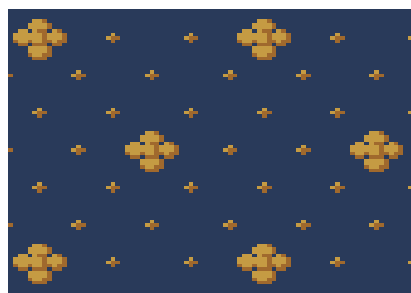
Cambridge Navy



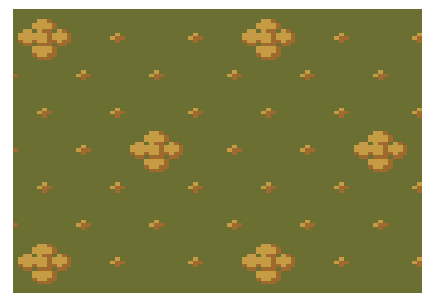
Cambridge Dark Green



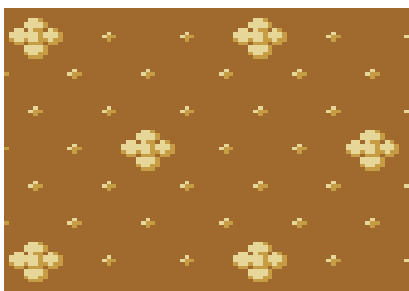
Cambridge Red



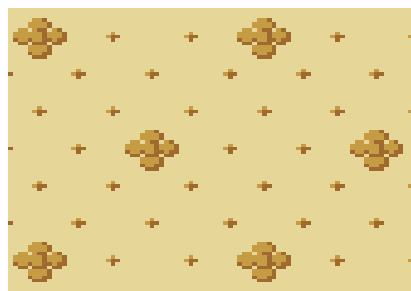
Cambridge Sapphire



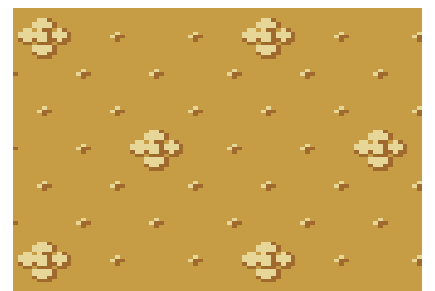
Cambridge Green



Cambridge Dark Gold



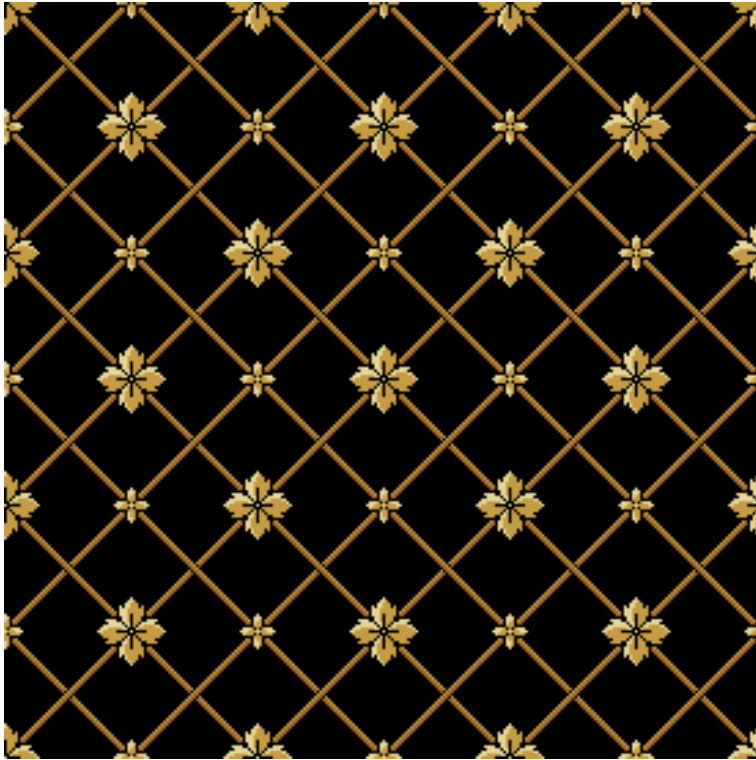
Cambridge Cream



Cambridge Gold

Chorister

Pattern Repeat:
Length: 33.4 cm S/M



Chorister Black



Chorister Gold



Chorister Green



Chorister Navy



Chorister Dark Gold



Chorister Dark Green



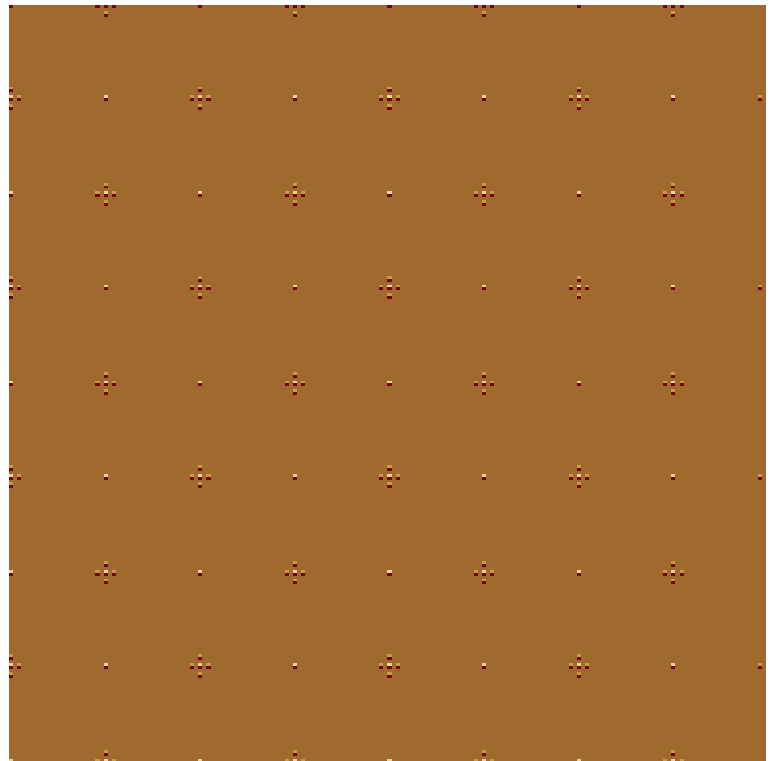
Chorister Sapphire



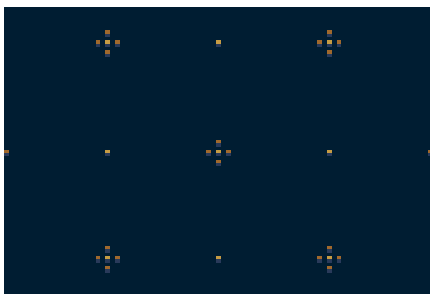
Chorister Red

Confetti

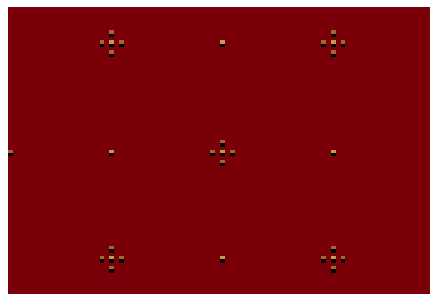
Pattern Repeat:
Length: 16.5 cm S/M



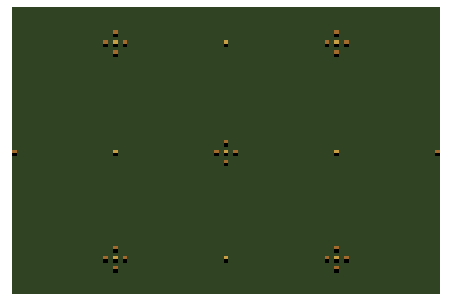
Confetti Dark Gold



Confetti Navy



Confetti Red



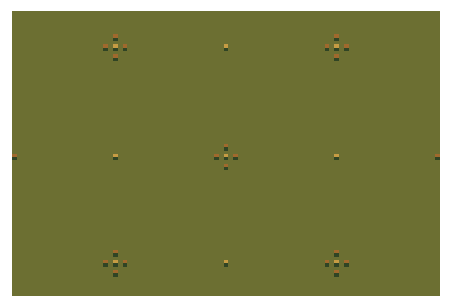
Confetti Dark Green



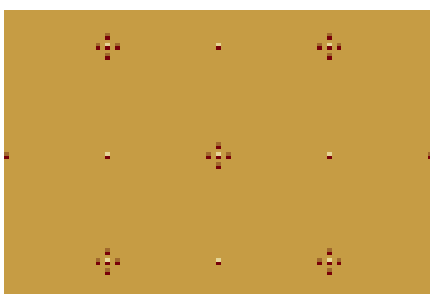
Confetti Sapphire



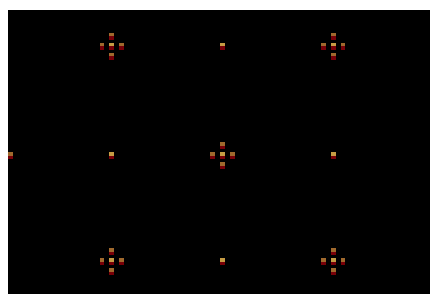
Confetti Terracotta



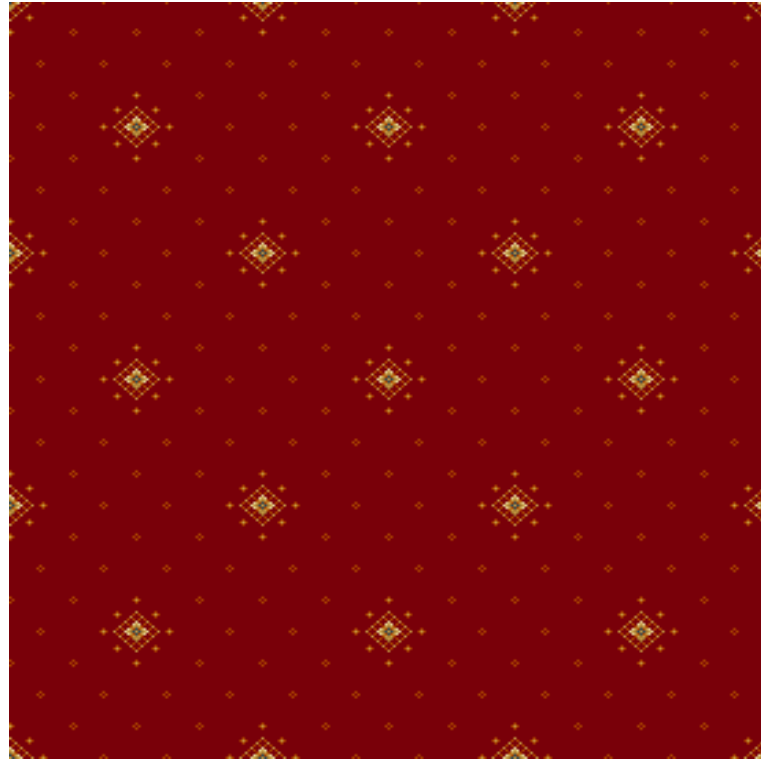
Confetti Green



Confetti Gold



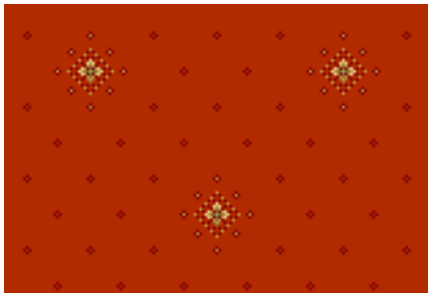
Confetti Black



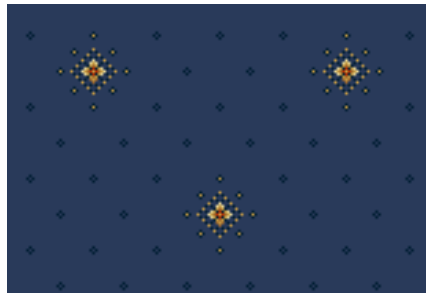
Crystal Red

Crystal

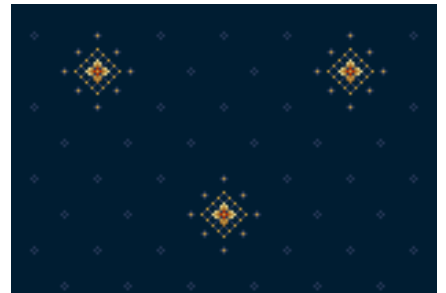
Pattern Repeat:
Length: 33.3 cm S/M



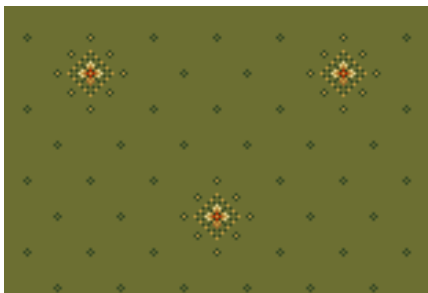
Crystal Terracotta



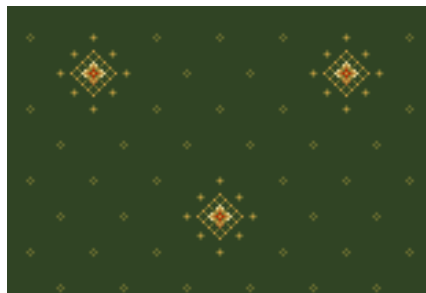
Crystal Sapphire



Crystal Navy



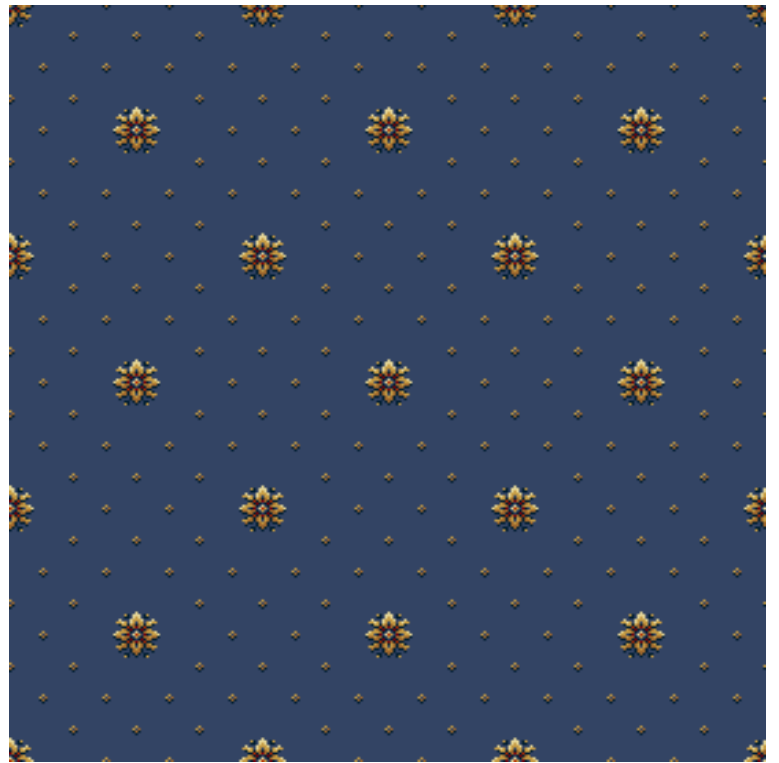
Crystal Green



Crystal Dark Green

Dahlia

Pattern Repeat:
Length:33.3 cm S/M



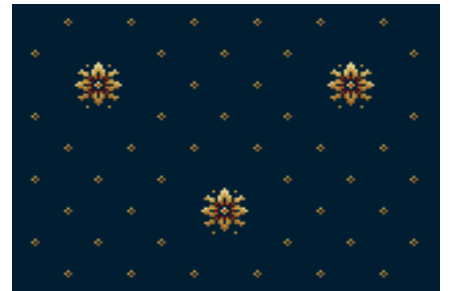
Dahlia Sapphire



Dahlia Green



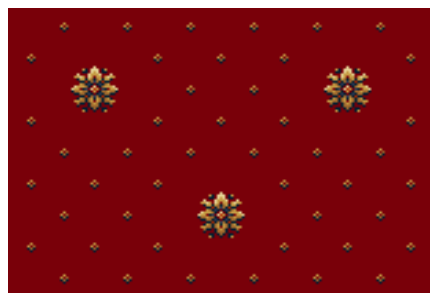
Dahlia Terracotta



Dahlia Navy



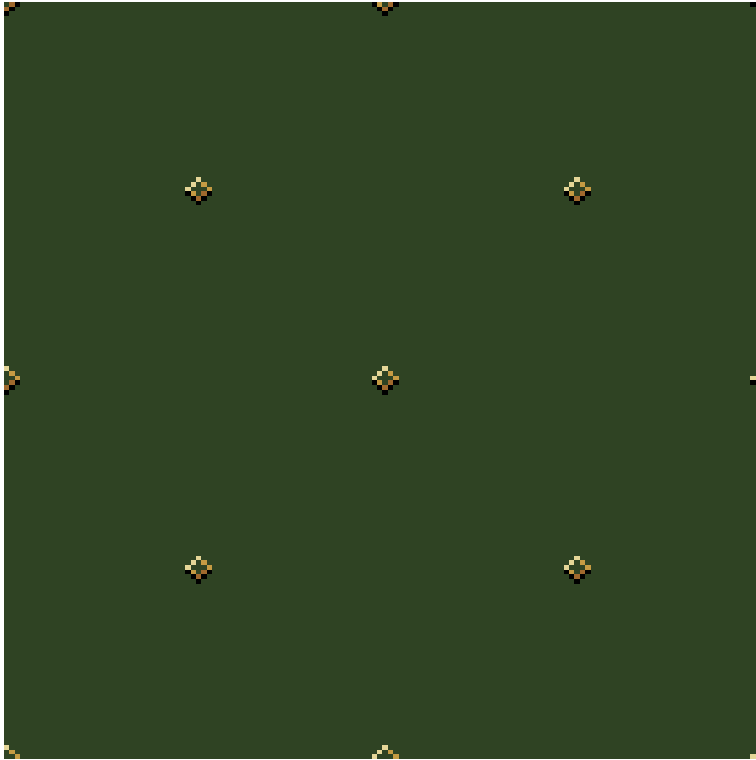
Dahlia Dark Green



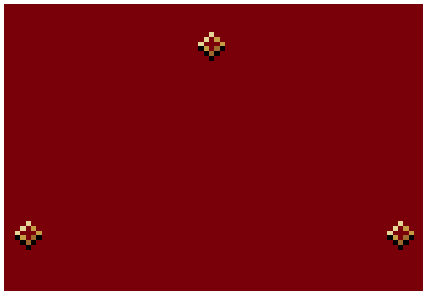
Dahlia Red

Diamond

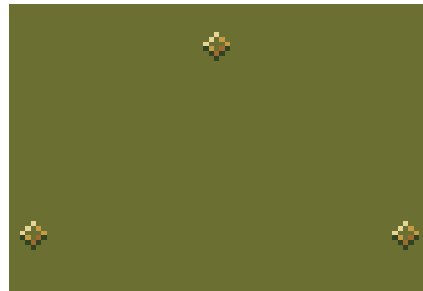
Pattern Repeat:
Length: 25.4 cm S/M



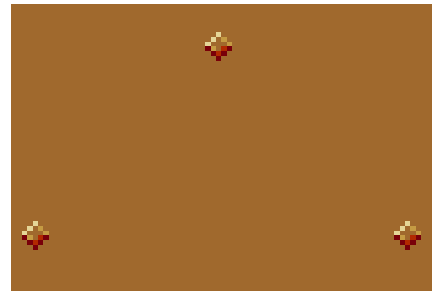
Diamond Dark Green



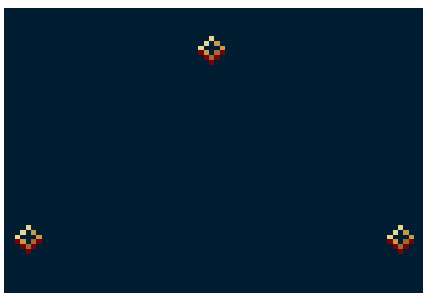
Diamond Red



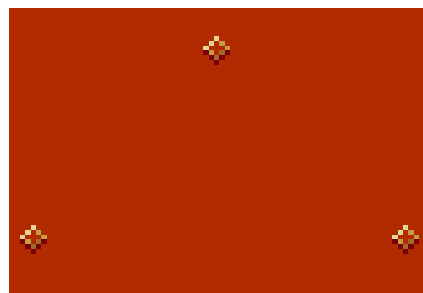
Diamond Green



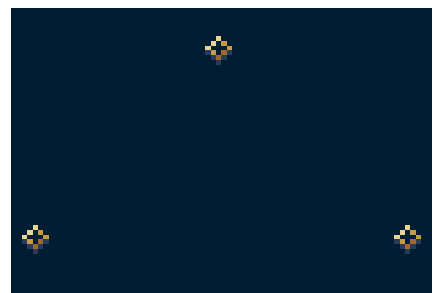
Diamond Dark Gold



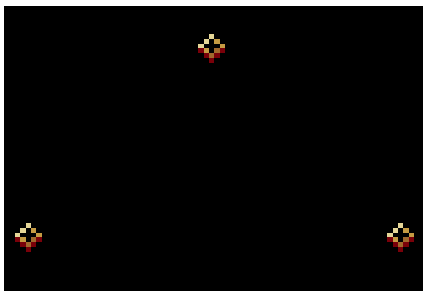
Diamond Navy Red



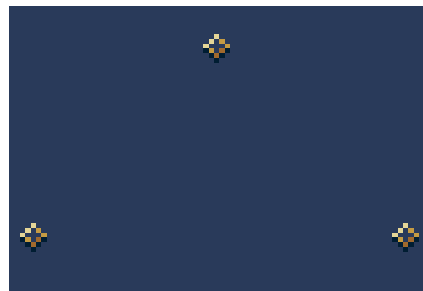
Diamond Terracotta



Diamond Navy



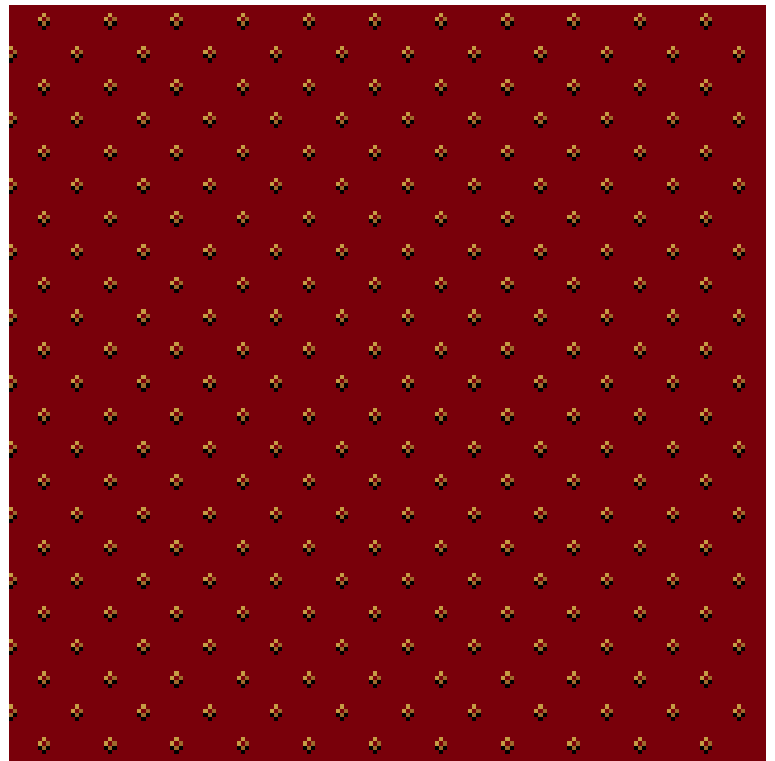
Diamond Black



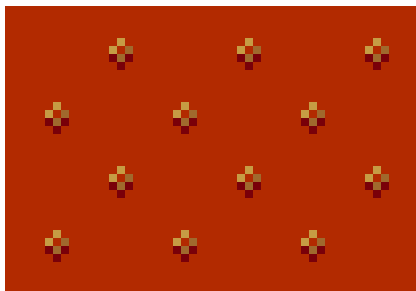
Diamond Sapphire

Eden

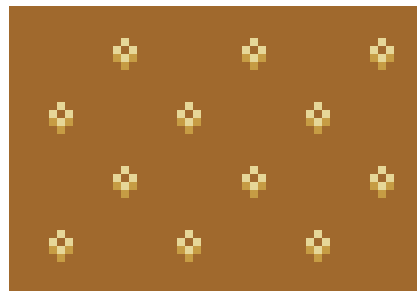
Pattern Repeat:
Length: 5.8 cm S/M



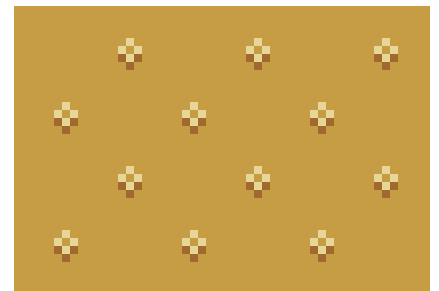
Eden Red



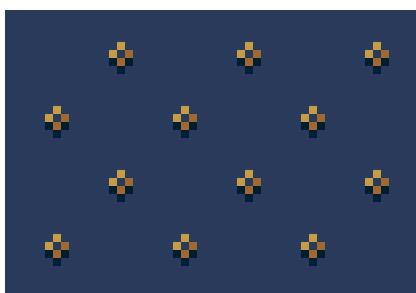
Eden Terracotta



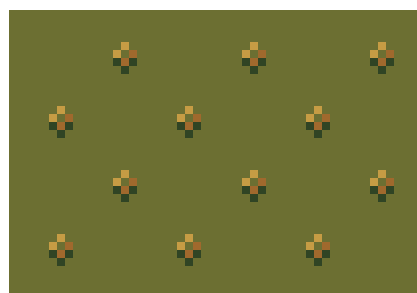
Eden Dark Gold



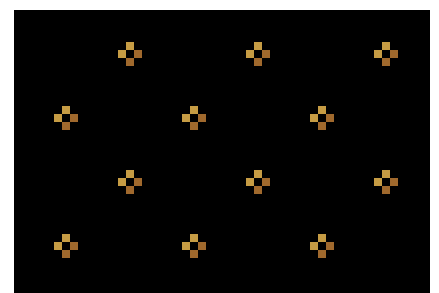
Eden Gold



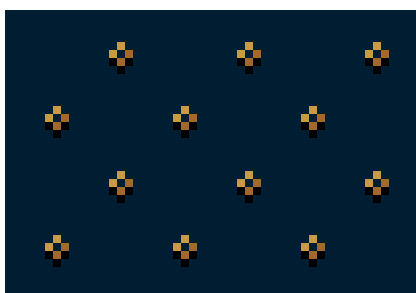
Eden Sapphire



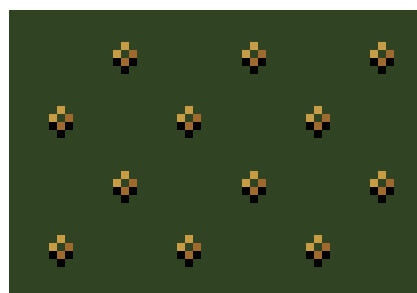
Eden Green



Eden Black



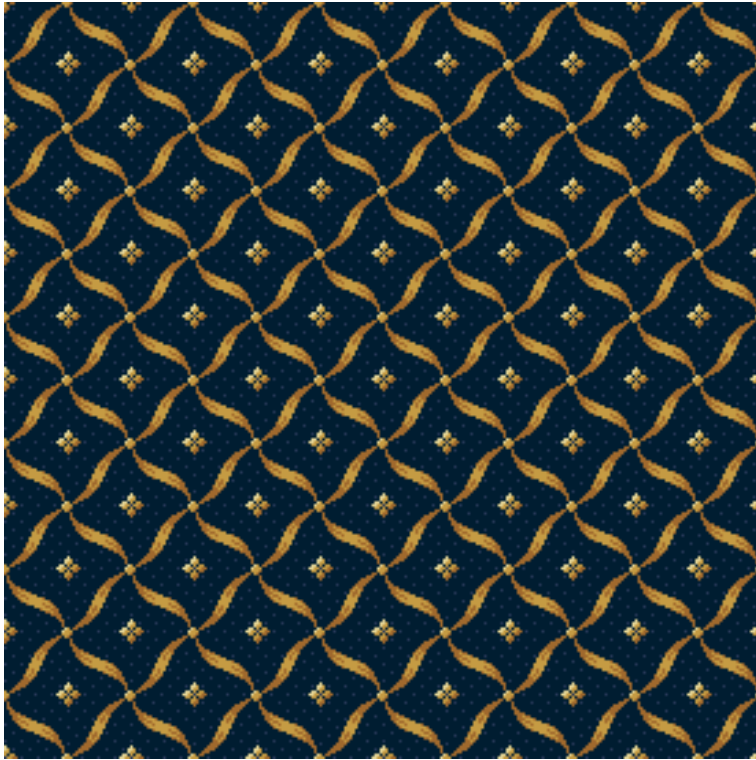
Eden Navy



Eden Dark Green

Filigree

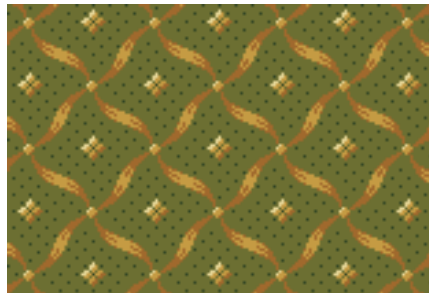
Pattern Repeat:
Length: 16.7 cm S/M



Filigree Navy



Filigree Sapphire



Filigree Green



Filigree Terracotta



Filigree Black



Filigree Dark Green



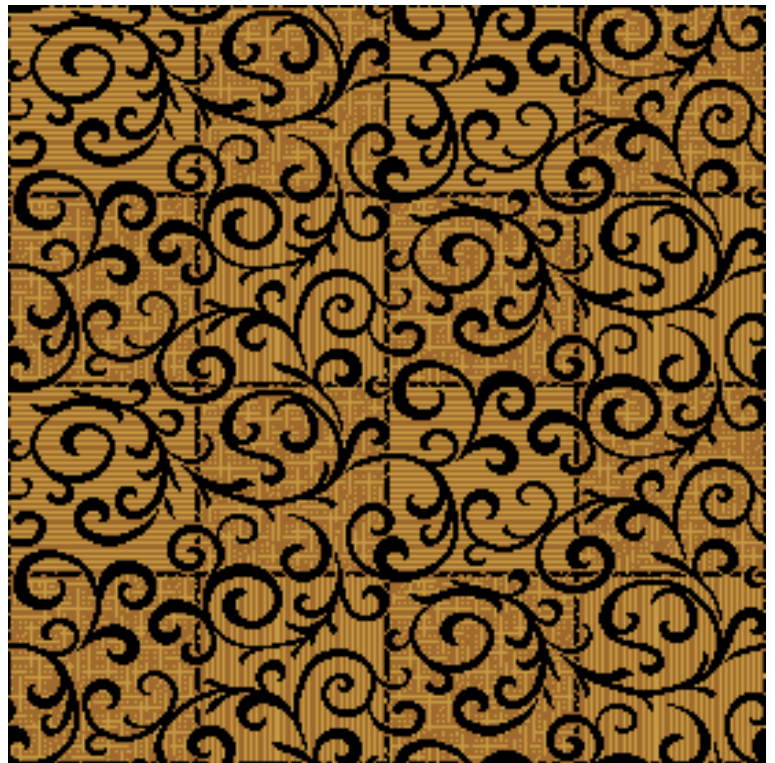
Filigree Red



Filigree Dark Gold

Florence

Pattern Repeat:
Length: 50 cm S/M



Florence Dark Gold



Florence Gold



Florence Sapphire



Florence Terracotta



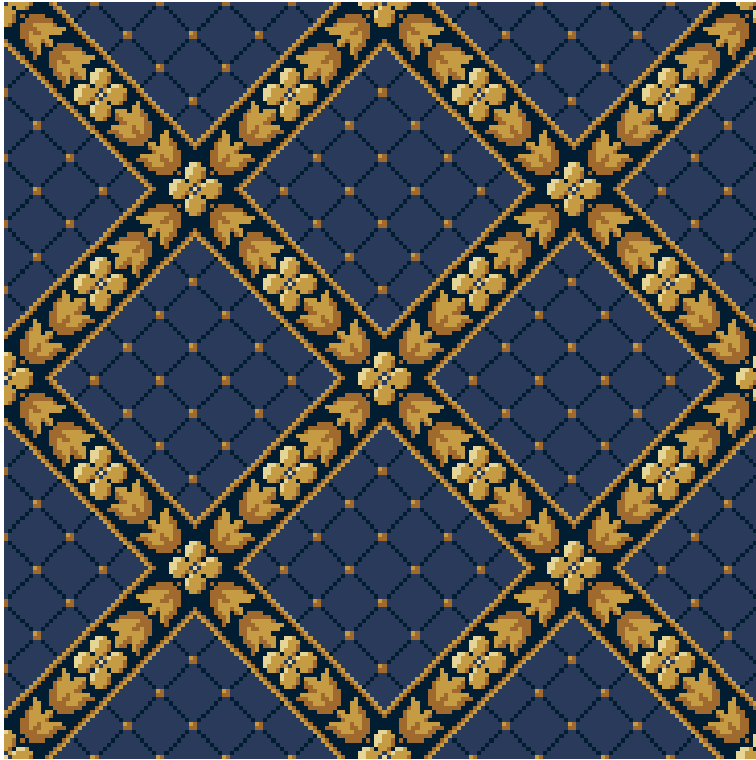
Florence Red



Florence Dark Green

Florette

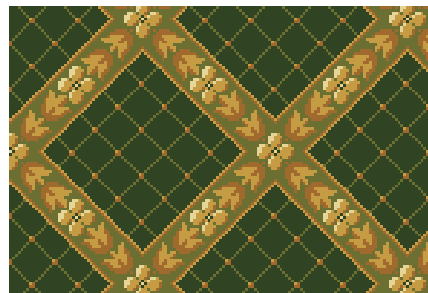
Pattern Repeat:
Length: 33.4 cm S/M



Florette Sapphire



Florette Red



Florette Dark Green



Florette Gold



Florette Terracotta



Florette Green



Florette Dark Gold



Florette Navy



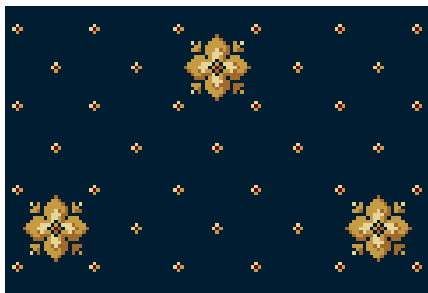
Florette Black

Highgrove

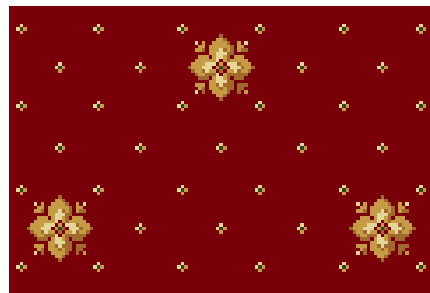
Pattern Repeat:
Length: 33.4 cm S/M



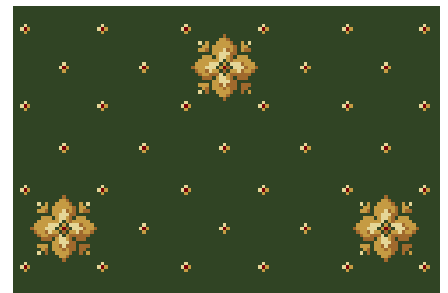
Highgrove Dark Gold



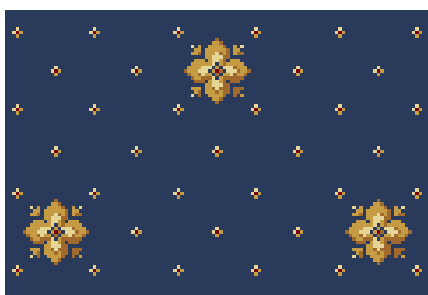
Highgrove Navy



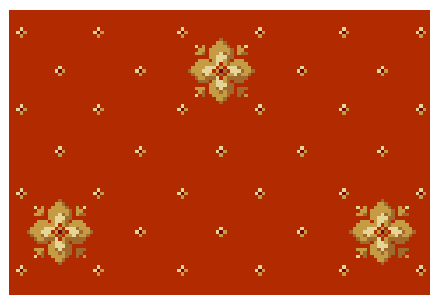
Highgrove Red



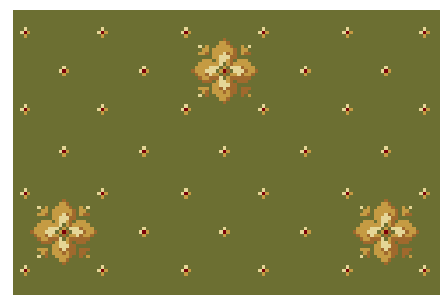
Highgrove Dark Green



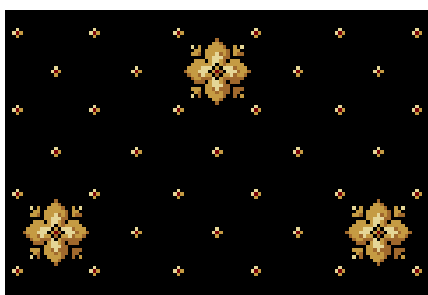
Highgrove Sapphire



Highgrove Terracotta



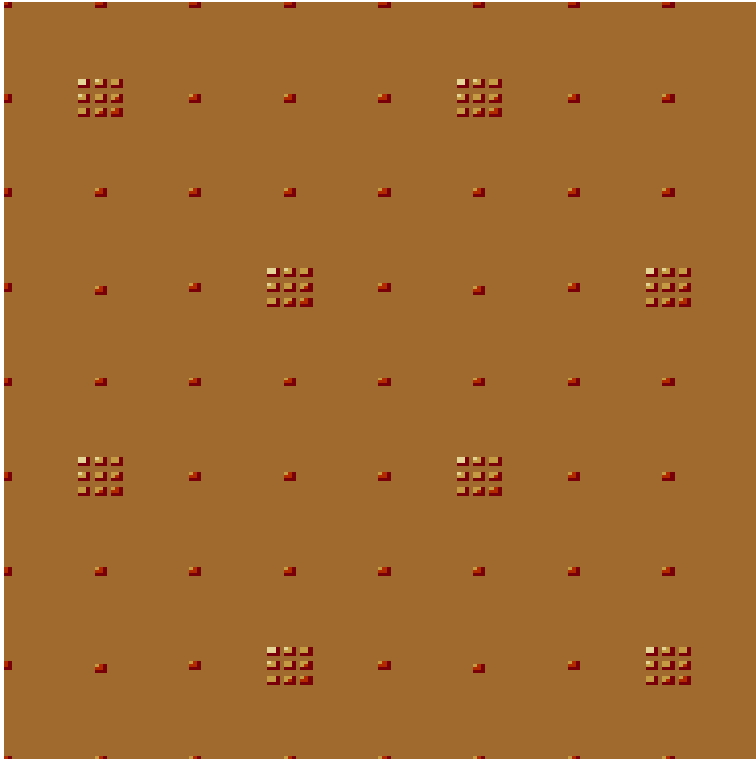
Highgrove Green



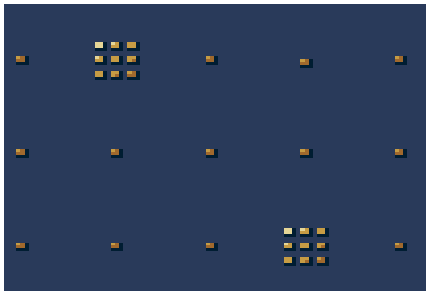
Highgrove Black

Insignia

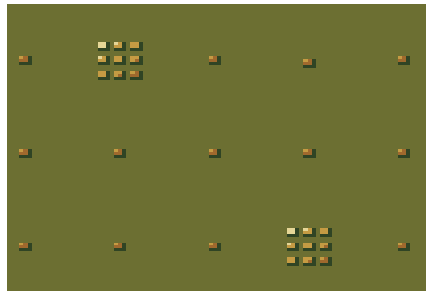
Pattern Repeat:
Length: 32.5 cm S/M



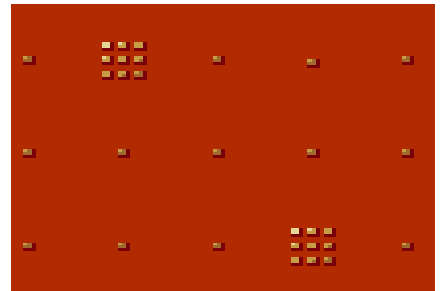
Insignia Dark Gold



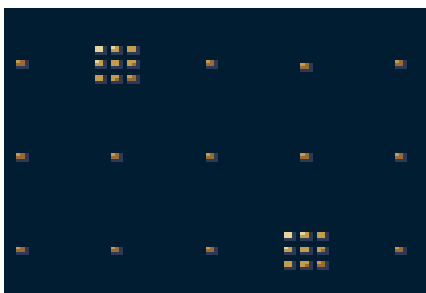
Insignia Sapphire



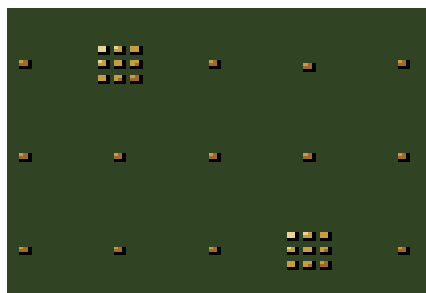
Insignia Green



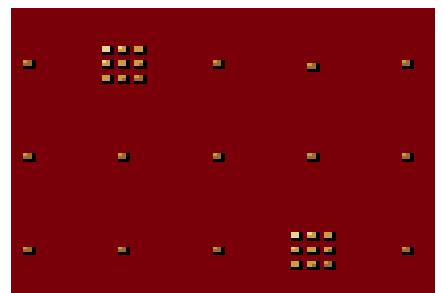
Insignia Terracotta



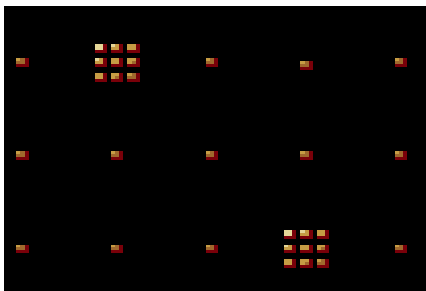
Insignia Navy



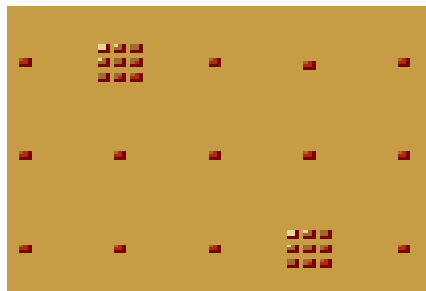
Insignia Dark Green



Insignia Red



Insignia Black



Insignia Gold

Kashan

Pattern Repeat:
Length:63.9 cm S/M



Kashan Black



Kashan Terracotta



Kashan Dark Green



Kashan Sapphire



Kashan Green



Kashan Red



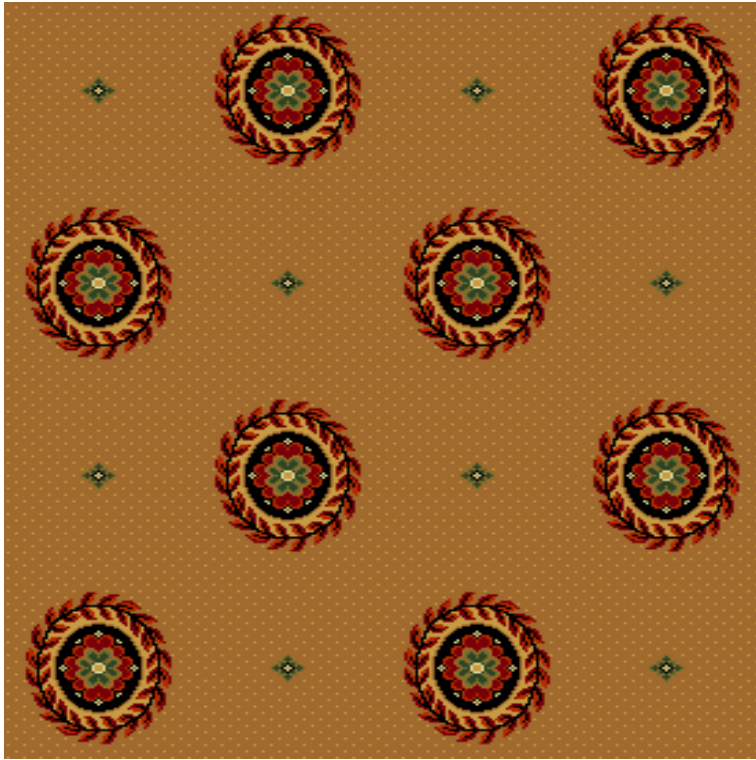
Kashan Gold



Kashan Navy

Laurel

Pattern Repeat:
Length: 50.8 cm S/M



Laurel Dark Gold



Laurel Black



Laurel Red



Laurel Dark Green



Laurel Navy



Laurel Terracotta



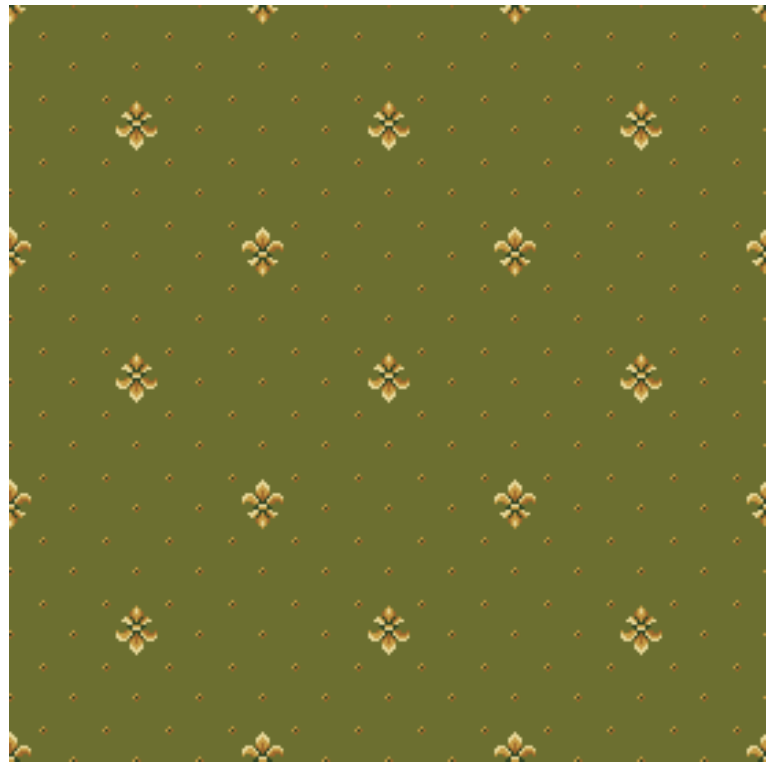
Laurel Green



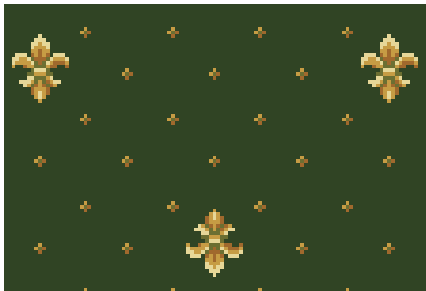
Laurel Sapphire

Lily

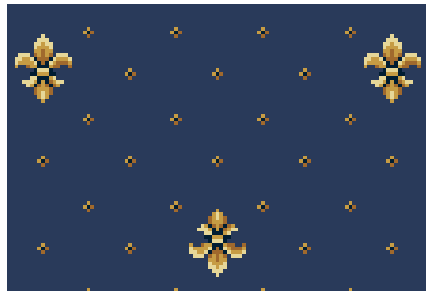
Pattern Repeat:
Length:33.3 cm S/M



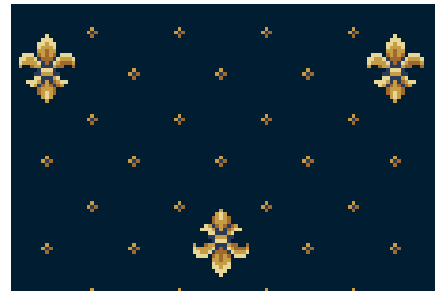
Lily Green



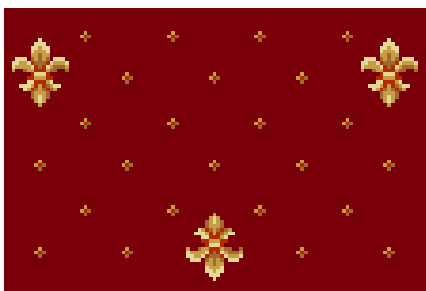
Lily Dark Green



Lily Sapphire



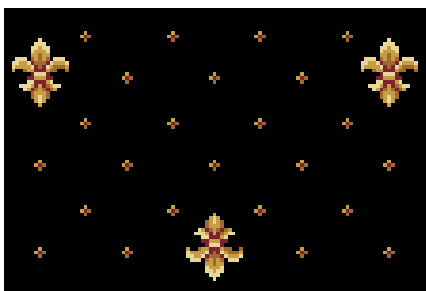
Lily Navy



Lily Red



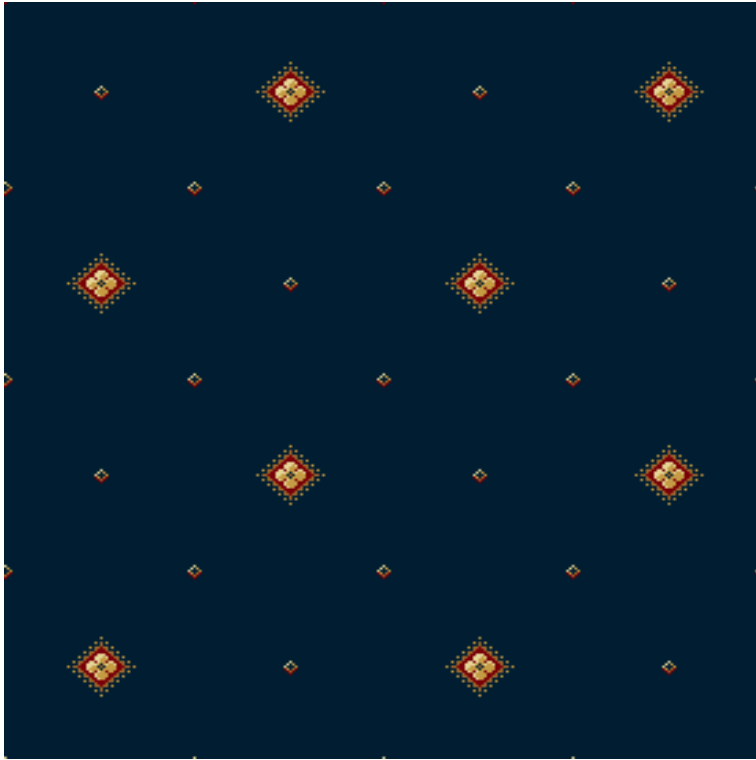
Lily Terracotta



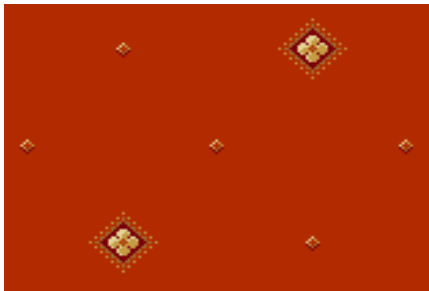
Lily Black

Majestic

Pattern Repeat:
Length: 50.8 cm S/M



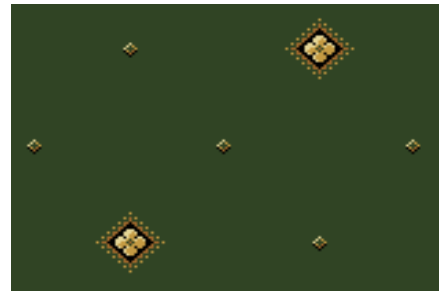
Majestic Navy Red



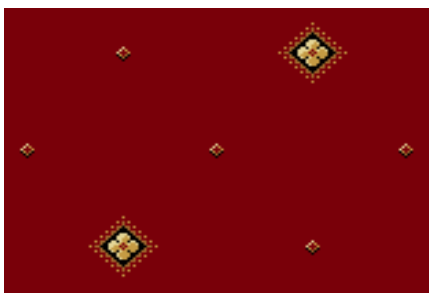
Majestic Terracotta



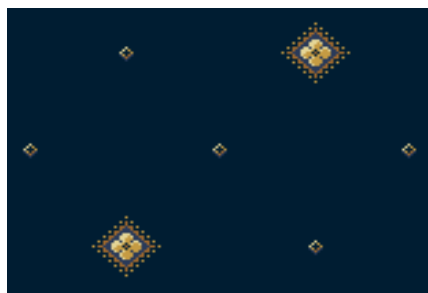
Majestic Dark Gold



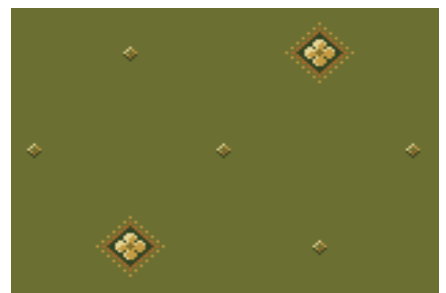
Majestic Dark Green



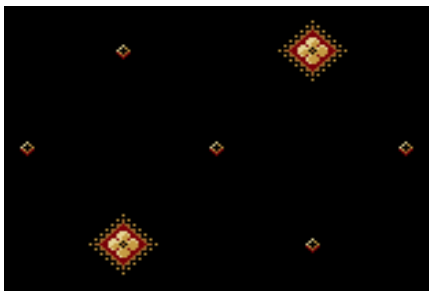
Majestic Red



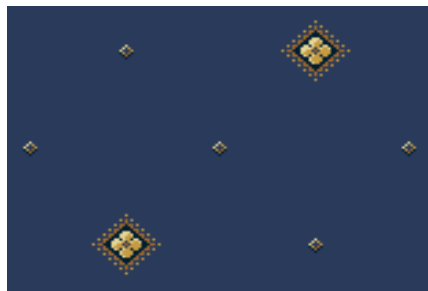
Majestic Navy



Majestic Green



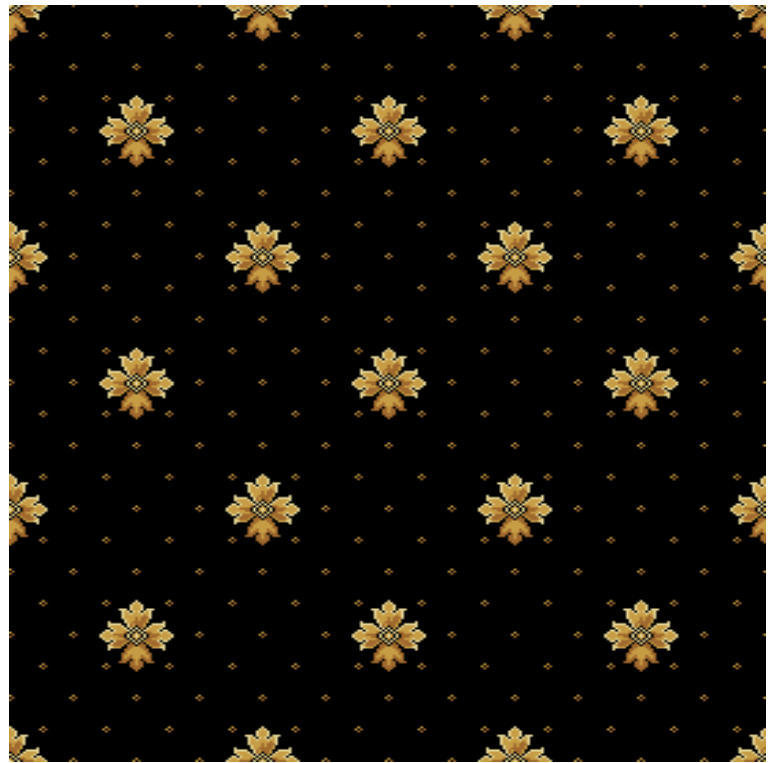
Majestic Black



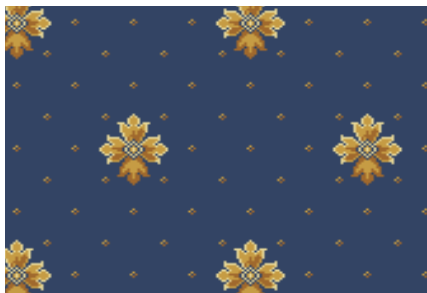
Majestic Sapphire

Milin

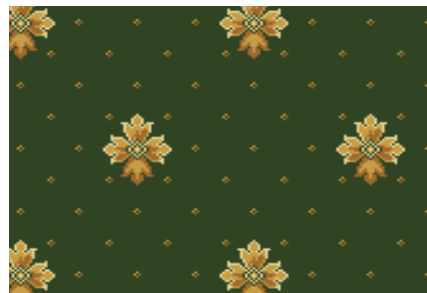
Pattern Repeat:
Length:33.3 cm S/M



Milin Black



Milin Sapphire



Milin Dark Green



Milin Red



Milin Terracotta



Milin Green



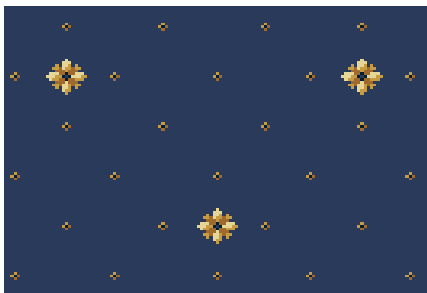
Milin Navy



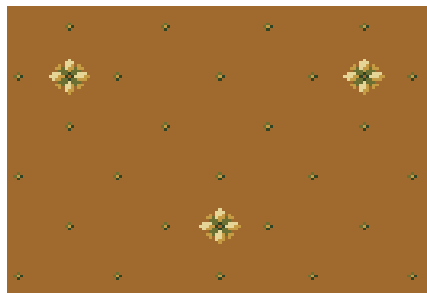
Pageant Dark Green

Pageant

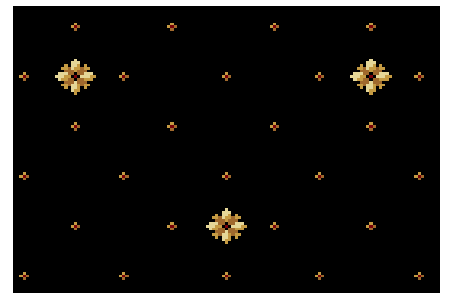
Pattern Repeat:
Length: 34.3 cm S/M



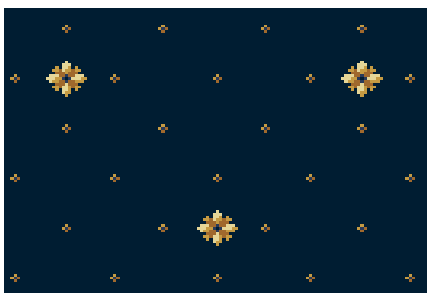
Pageant Sapphire



Pageant Dark Gold



Pageant Black



Pageant Navy



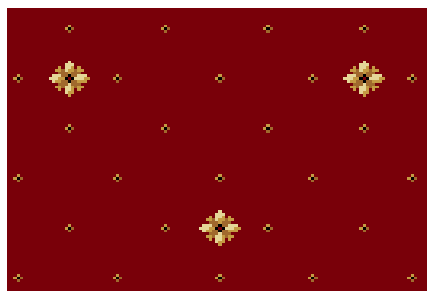
Pageant Green



Pageant Gold



Pageant Terracotta



Pageant Red



Pageant Gold Red

Persian Garden

Pattern Repeat:
Length: 58.1 cm S/M



Persian Garden Red



Persian Garden Terracotta



Persian Garden Green



Persian Garden Black



Persian Garden Sapphire



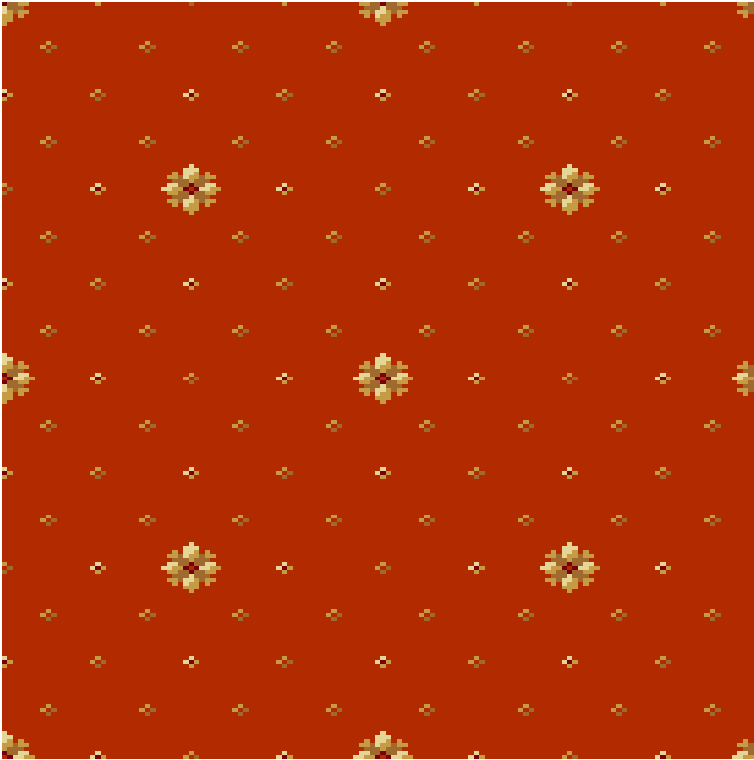
Persian Garden Dark Green



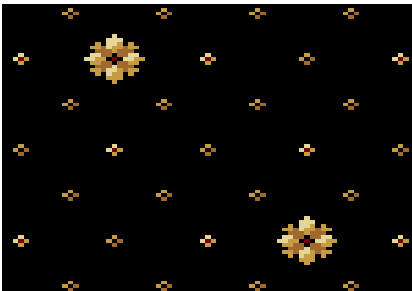
Persian Garden Dark Gold

Oxford

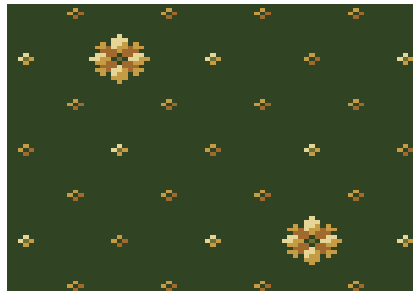
Pattern Repeat:
Length: 24.4 cm S/M



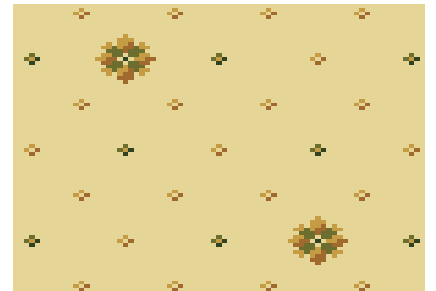
Oxford Terracotta



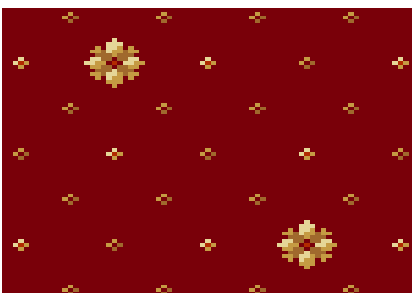
Oxford Black



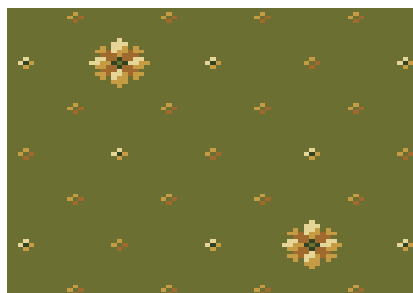
Oxford Dark Green



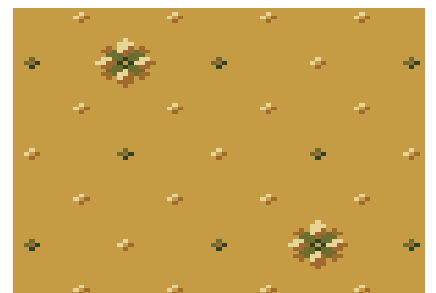
Oxford Cream



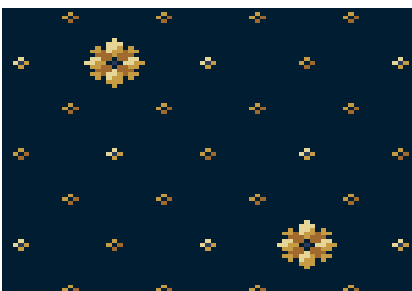
Oxford Red



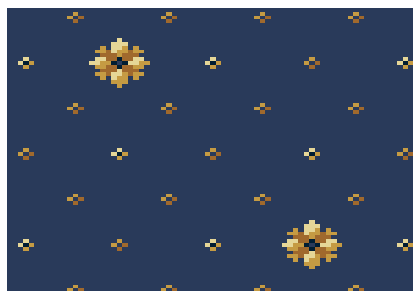
Oxford Green



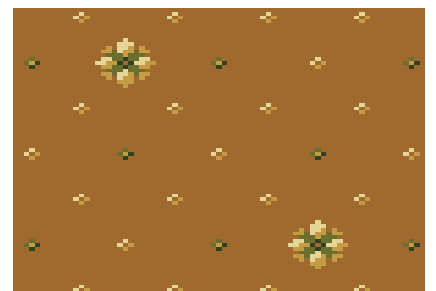
Oxford Gold



Oxford Navy



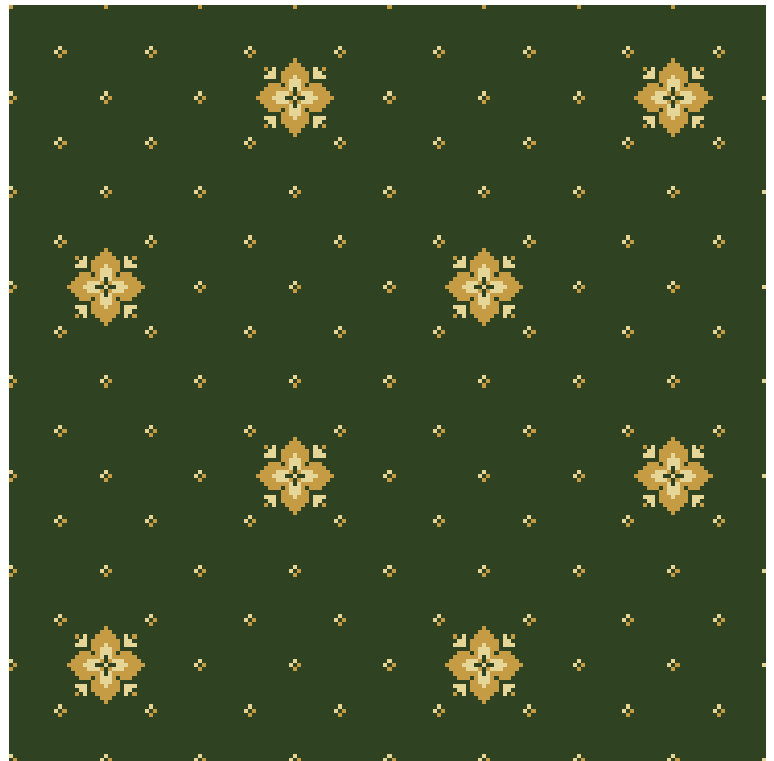
Oxford Sapphire



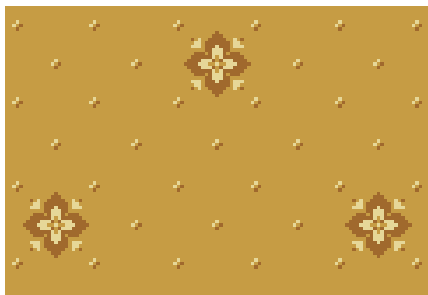
Oxford Dark Gold

Priory

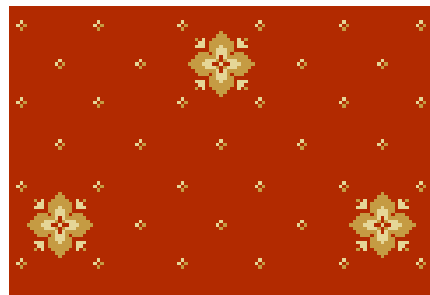
Pattern Repeat:
Length: 33.4 cm S/M



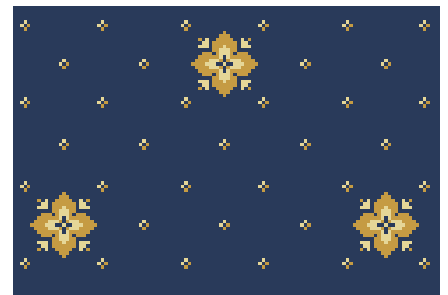
Priory Dark Green



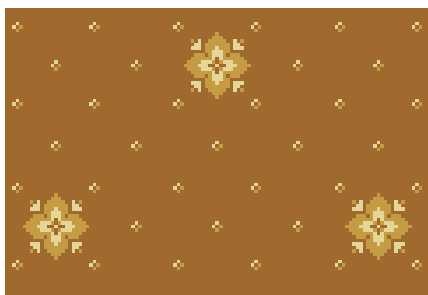
Priory Gold



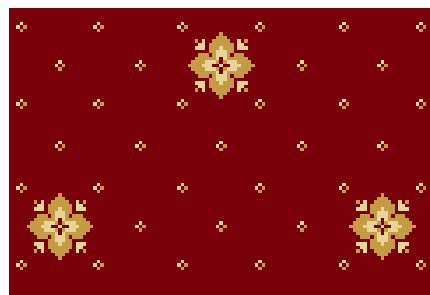
Priory Terracotta



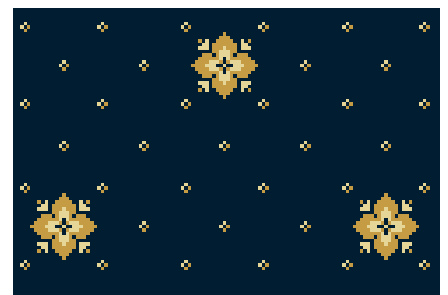
Priory Sapphire



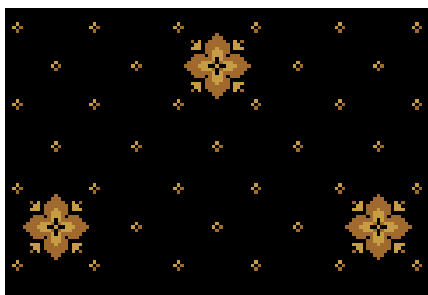
Priory Dark Gold



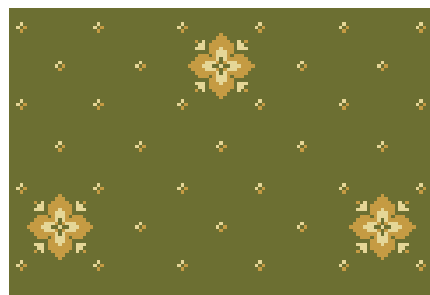
Priory Red



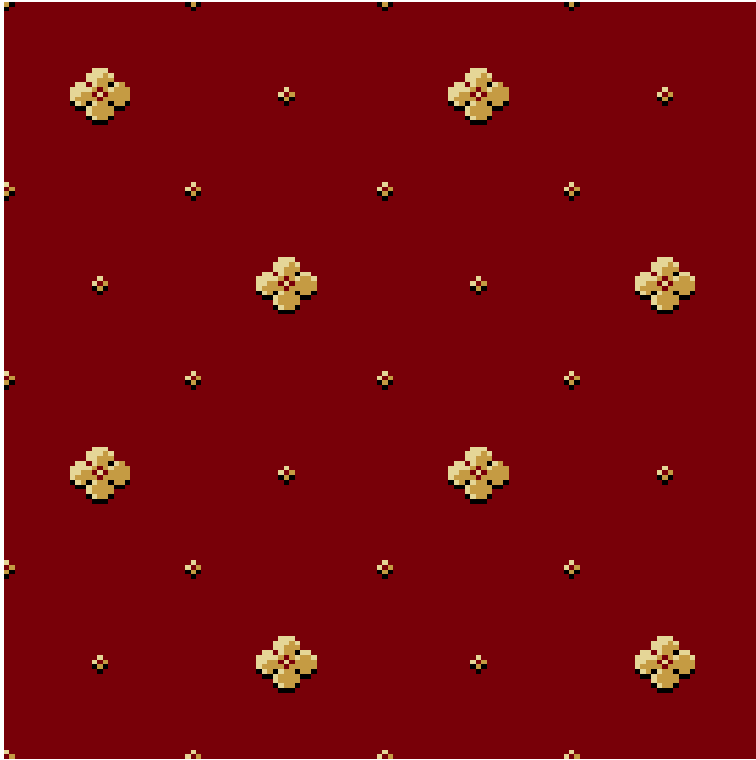
Priory Navy



Priory Black

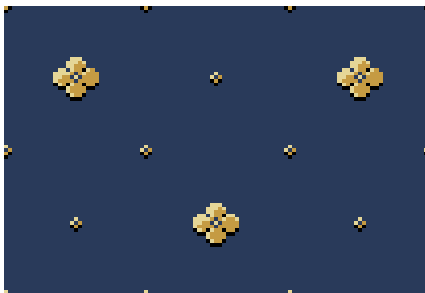


Priory Green

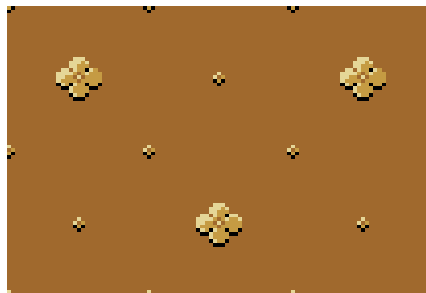


Regal

Pattern Repeat:
Length: 25.4 cm S/M



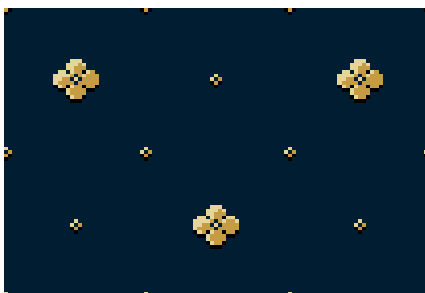
Regal Sapphire



Regal Dark Gold



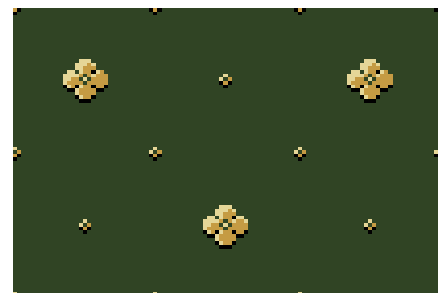
Regal Green



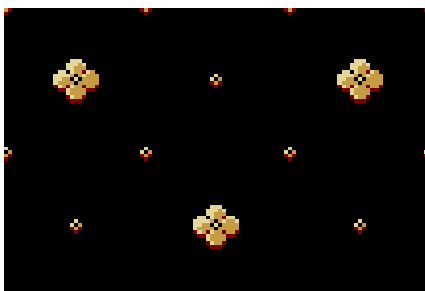
Regal Navy



Regal Terracotta



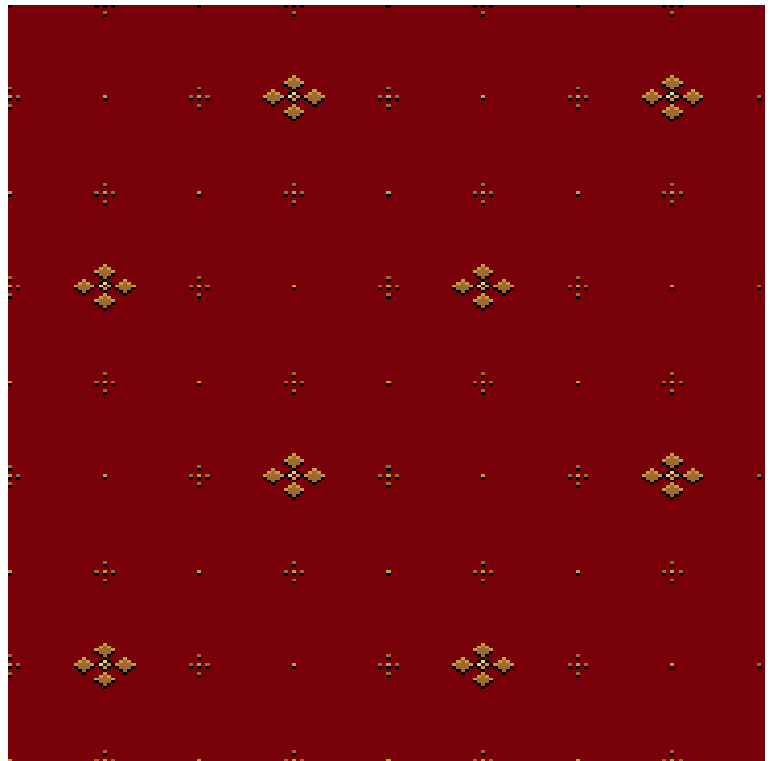
Regal Dark Green



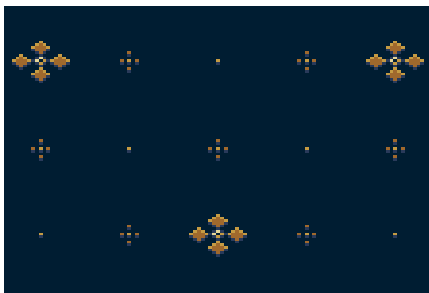
Regal Black

Sceptre

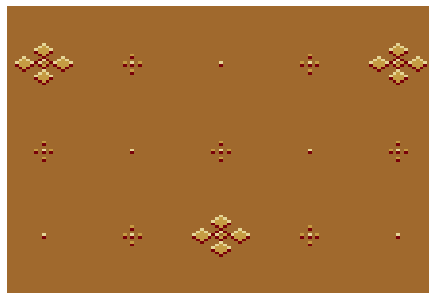
Pattern Repeat:
Length:33 cm S/M



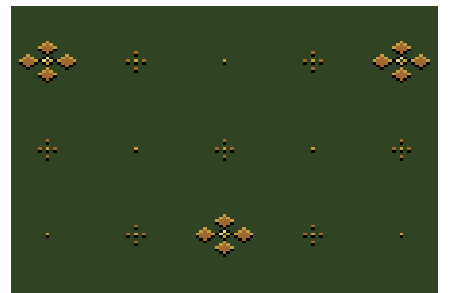
Sceptre Red



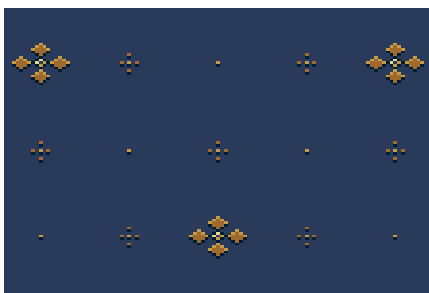
Sceptre Navy



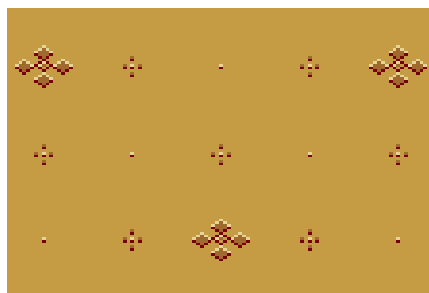
Sceptre Dark Gold



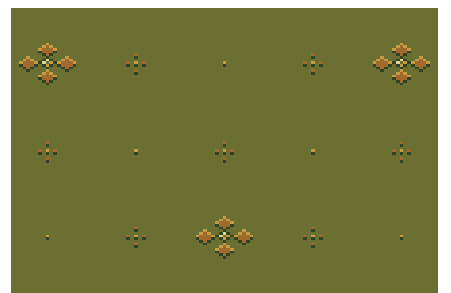
Sceptre Dark Green



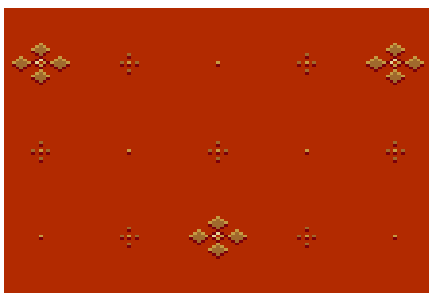
Sceptre Sapphire



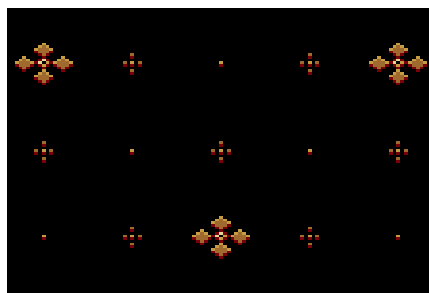
Sceptre Gold



Sceptre Green



Sceptre Terracotta



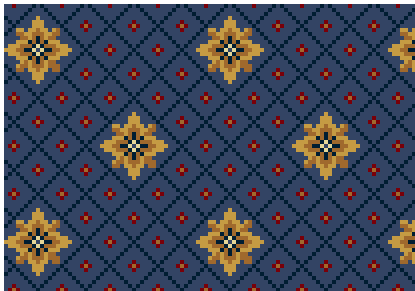
Sceptre Black



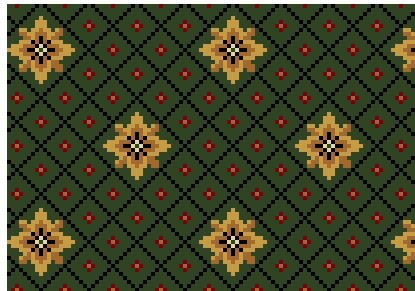
Sovereign Navy

Sovereign

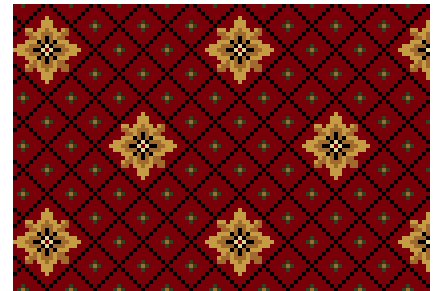
Pattern Repeat:
Length: 17.6 cm S/M



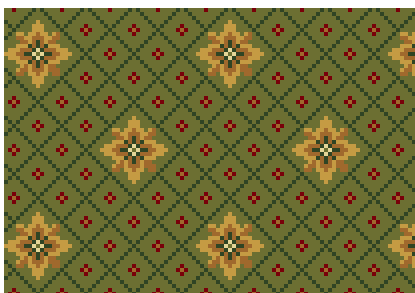
Sovereign Sapphire



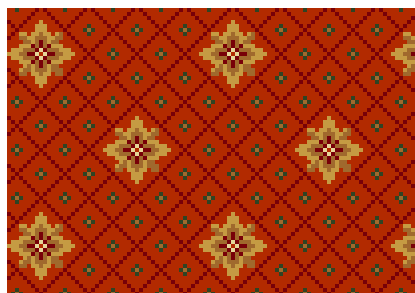
Sovereign Dark Green



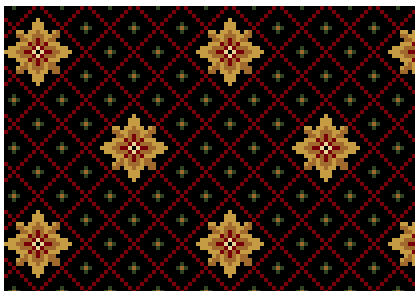
Sovereign Red



Sovereign Green



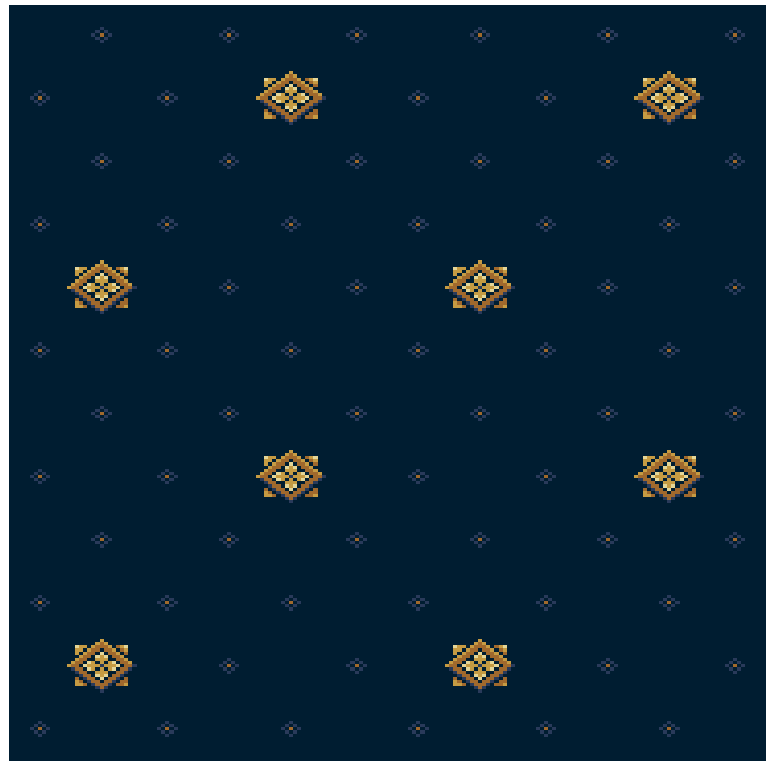
Sovereign Terracotta



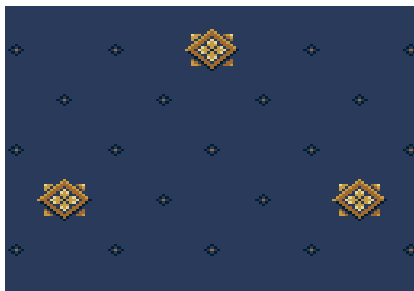
Sovereign Black

Sultan

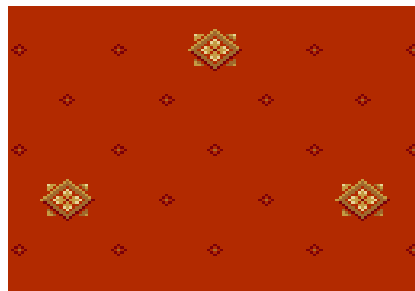
Pattern Repeat:
Length: 33.9 cm S/M



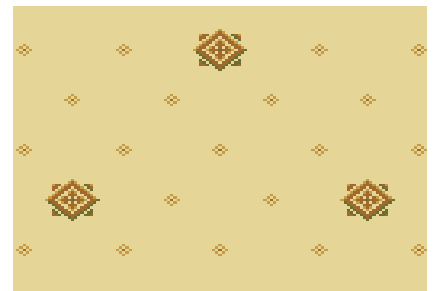
Sultan Navy



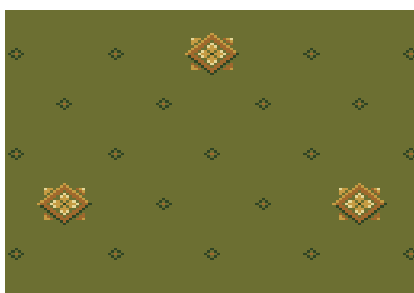
Sultan Sapphire



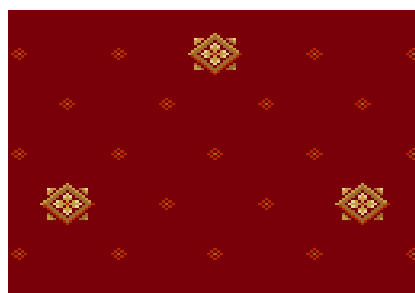
Sultan Terracotta



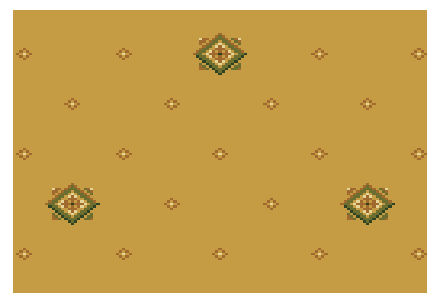
Sultan Cream



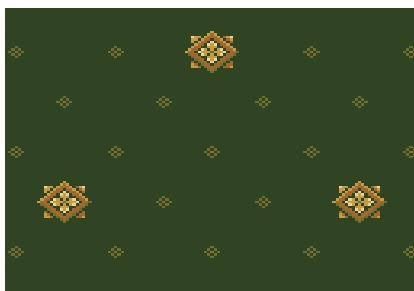
Sultan Green



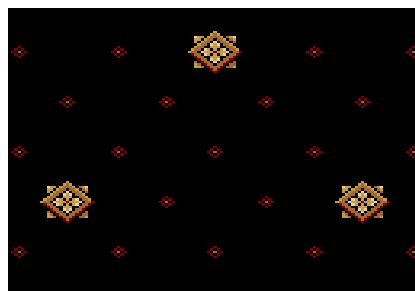
Sultan Red



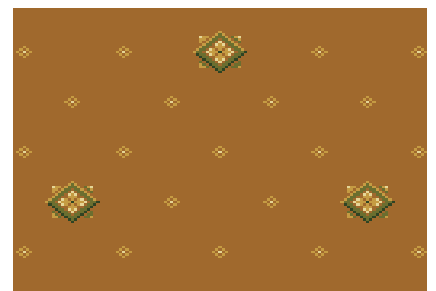
Sultan Gold



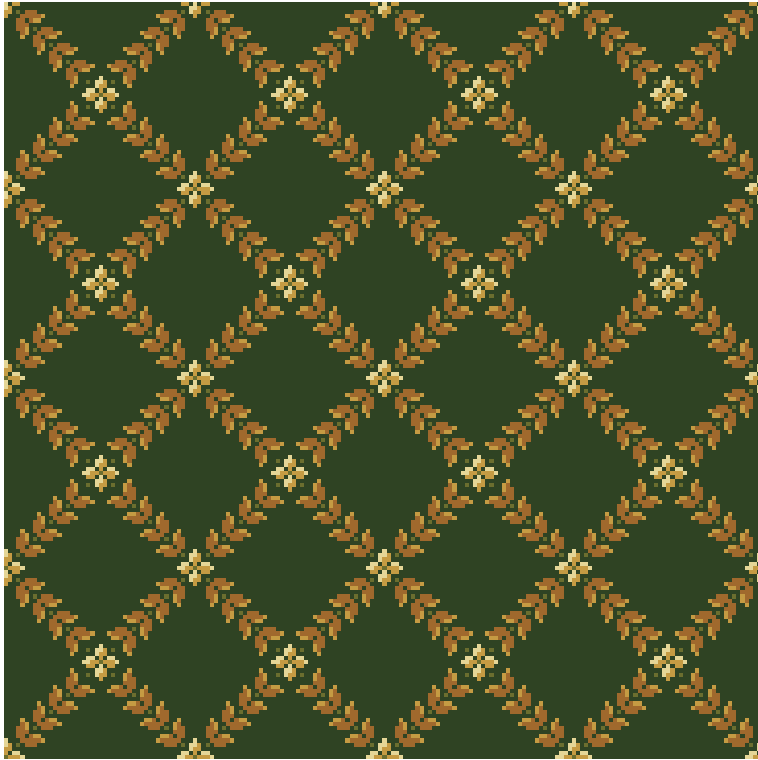
Sultan Dark Green



Sultan Black



Sultan Dark Gold



Trellis Dark Green

Trellis

Pattern Repeat:
Length: 16.7 cm S/M



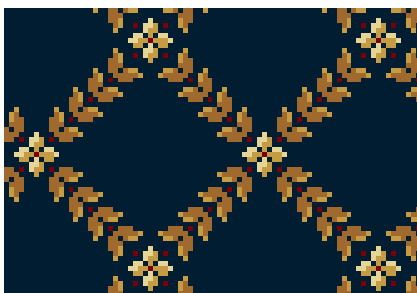
Trellis Green



Trellis Red



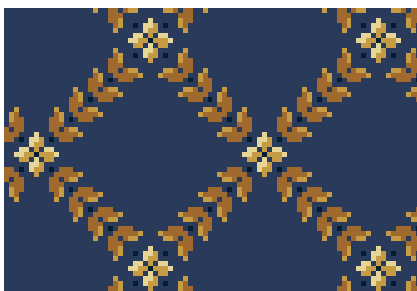
Trellis Black



Trellis Navy



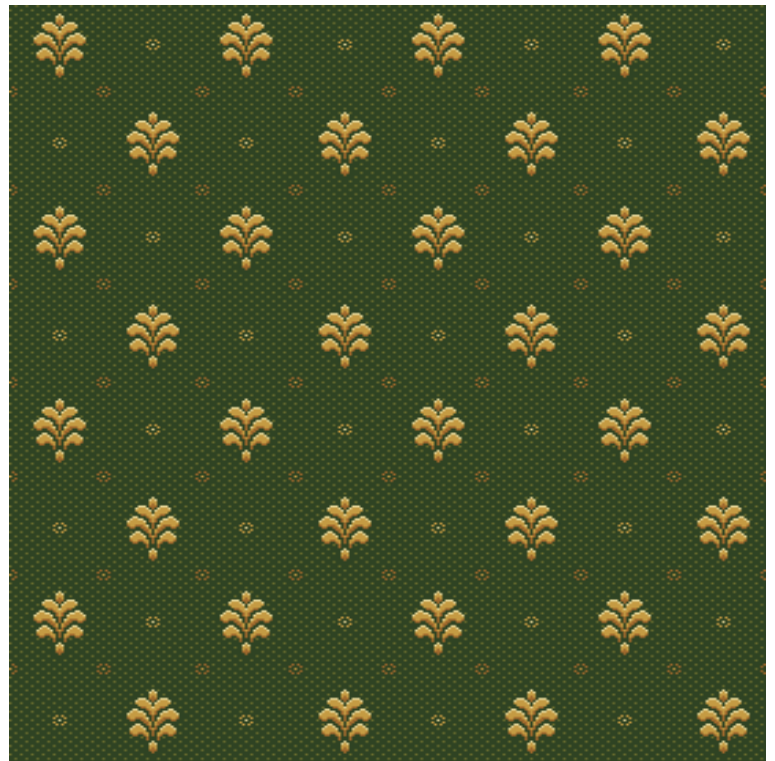
Trellis Terracotta



Trellis Sapphire

Trevi

Pattern Repeat:
Length: 50.8 cm S/M



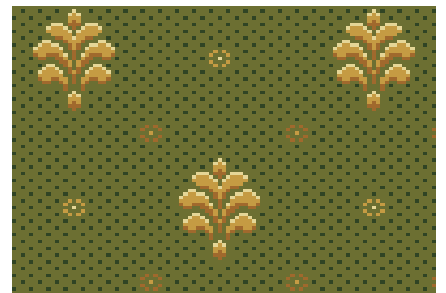
Trevi Dark Green



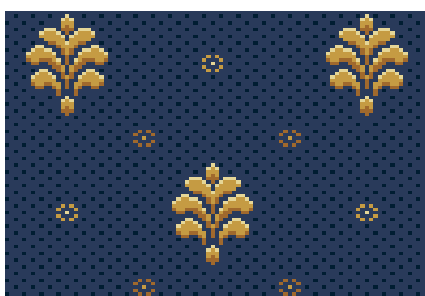
Trevi Dark Gold



Trevi Red



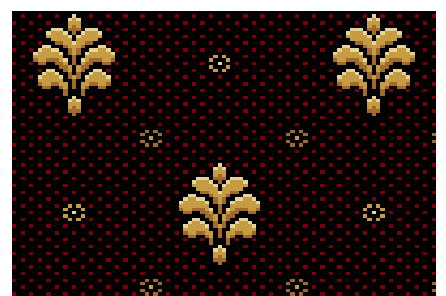
Trevi Green



Trevi Sapphire



Trevi Terracotta



Trevi Black



Trevi Navy

Spectrum Palette

Quality	Pitch (per inch)	Row (per inch)	Pile Weight (g/msq)	Width (m)	Appearance Class	Luxury rating
Windermere	7	6	920	4	23/32 General Commercial use	LC3
Derwent	7	7	1070	4	33-Heavy Commercial use	LC4
Grassmere	7	8	1225	4	33-Heavy Commercial use	LC4
Coniston	7	9	1380	4	33-Heavy Commercial use	LC4
Ullswater(spike resist)	7	10	1530	4	33-Heavy Commercial use	LC4

quality selection

The qualities detailed in the matrix above represent specifications which should satisfy most commercial requirements. With each particular installation, the decision on which quality is most appropriate will depend on the levels of traffic and the length of time the carpet is expected to be installed.

Gaskell Mackay have many years of experience in these considerations and provide detailed advice on quality selection on a project by project basis. Technical specifications are available on request.

colour and design

Colour and the presence or absence of a pattern can have a significant bearing on the long term appearance retention of the carpet. As a general rule, darker red, brown and grey tones are much less sensitive in displaying soiling than the equivalent blue, green or purple shades. All light colours are dirt sensitive, while highly patterned carpets tend to hide dirt, cigarette burns and stains.

Other aspects will also influence the choice of colour. For example, the light in a building (natural or artificial) can have a dramatic effect on the apparent colour of the carpet. Therefore carpet samples should be viewed under different light sources to ascertain their apparent colours.

planning and estimation service

Using the latest Callidus planning software, Gaskell Mackay can accurately estimate carpet requirements from site plans to any scale. Accurate waste estimations can be readily calculated and adjustments made to minimise this.

One critical area of importance is seam placement. Knowledge of customer flow through the area is used to guide the fitter in the careful positioning of seams to avoid premature wear. The planning and estimation service is free.

samples

Samples of all the designs and colourways illustrated (along with many others) can be obtained and are usually available within 72 hours.

installation

The 'Infinity' range of carpet qualities which includes Windermere, Derwent and Coniston are produced on a revolutionary new, high speed axminster loom and are woven without a traditional selvedge. The selvedge is trimmed during manufacturing as close as possible to the pile. Normally this allows the carpet to be joined without necessity for further trimming of the selvedge. The uniquely formed selvedge may however be trimmed by the installer if he feels the carpet has not been trimmed sufficiently to the pile and would leave a gap after seaming. Fusible yarns are woven into the selvedge to provide extra pile anchorage.

It is essential to seal the back of the carpet before cutting, particularly on cross cuts and then seal the cut edge to prevent fraying. The carpet may be seamed with heat seaming tape or electro-seaming tape (e.g. 'Silvaseam'). The carpet may be hand sewn if this is specified for border work after the carpet has been sealed and cut.

In all other respects the carpet should be installed in accordance with BS5325 (Code of Practice for the Installation of Textile Floorcoverings) and NICF Carpet Installation Manual by a trained axminster carpet installer.

There are a number of ways in which the 'Infinity' range of Gaskell Mackay qualities can be installed including stretch fitted over a suitable contact underlay on to gripper, full adhesion to a prepared subfloor or installed on double stick underlay systems. Installation on double stick underlay systems should be in accordance with the recommendations issued by Gaskell Mackay Carpets Ltd.

maintenance

Effective dirt barrier systems must be fitted in footwells in, or immediately adjacent to external entrances. Carpet maintenance must be carefully planned and this plan implemented from the moment the carpet is installed.

Maintenance methods and levels must be tailored to foot traffic intensity to prevent both inadequate or unnecessary cleaning. A cleaning schedule usually includes three levels of cleaning.

1. Regular maintenance (Daily vacuum cleaning and spot removal).
2. Intermediate "wet" cleaning or surface brightening.
3. Deep or restorative "wet" cleaning.

Depending on how effective the regular (usual daily) maintenance is, then intermediate cleaning will have to be used eventually. Effective intermediate cleaning can often postpone the need for restorative cleaning, all of which will save maintenance costs. Correct and regular maintenance will also be cost effective by increasing the lifespan of the carpet.

The above information on installation and maintenance provides general guidelines and full details on these subjects can be obtained by contacting the Contract Sales Desk on 01429 892525 or . E-MAIL sales@gaskell.co.uk



HERITAGE, BEAUTY, SERVICE

www.gaskell.co.uk