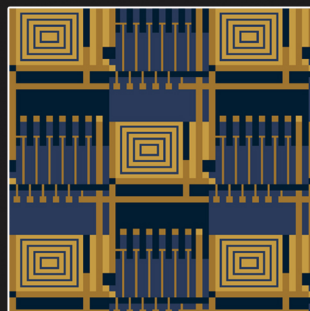
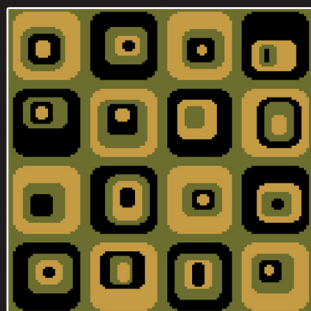
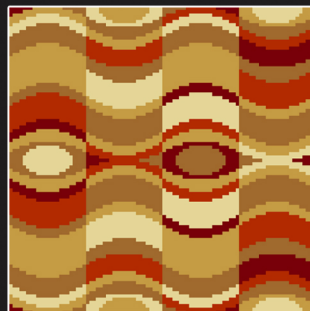
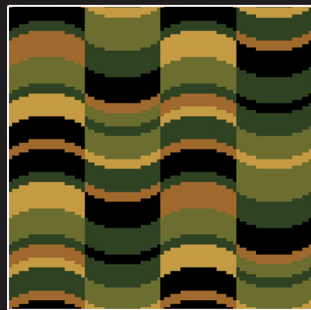
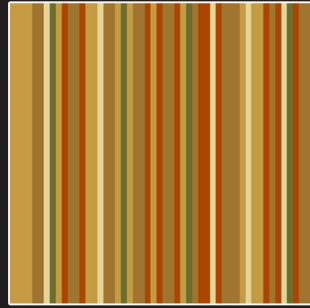


INFINITY SPECTRUM² COLLECTION



HERITAGE, BEAUTY, SERVICE

www.gaskell.co.uk

A selection of contemporary patterns coloured for the infinity spectrum palette.

Due to the limitations of the printing process, we are unable to guarantee an exact colour reproduction of these designs.

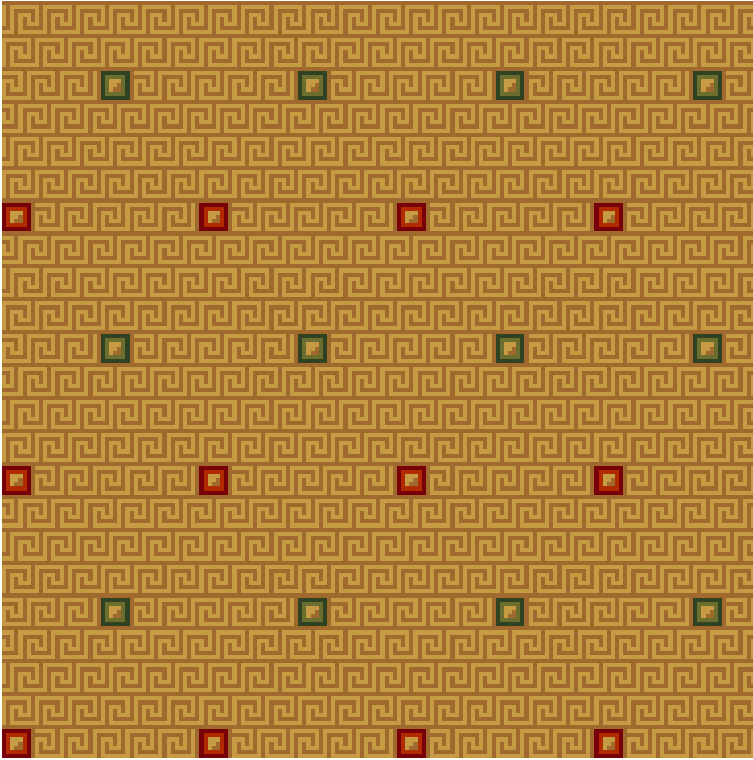
To obtain a more accurate representation of colour please use the colour tufts in the Infinity Tuft Box.

From the spectrum palette

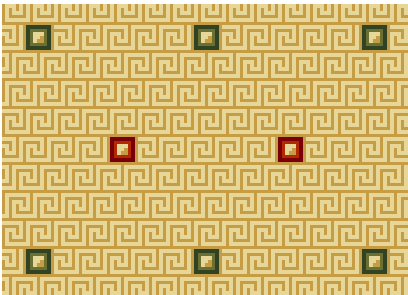
 ivory	 terracotta
 cream	 burgundy
 beige	 dark green
 dark beige	 willow
 light gold	 light green
 dark gold	 navy
 brown	 sapphire
 red	 black

Athens

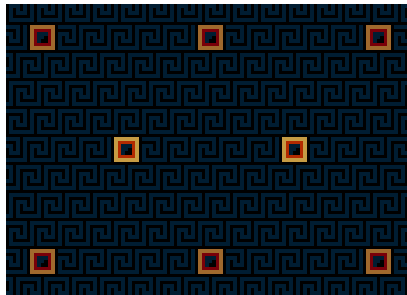
Pattern Repeat:
Length: 25.2 cm S/M



Athens Gold



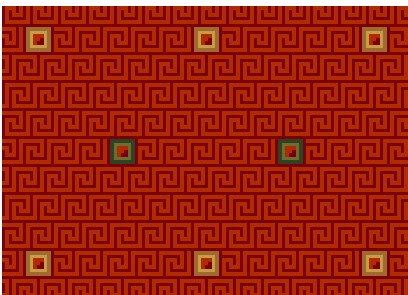
Athens Cream



Athens Navy



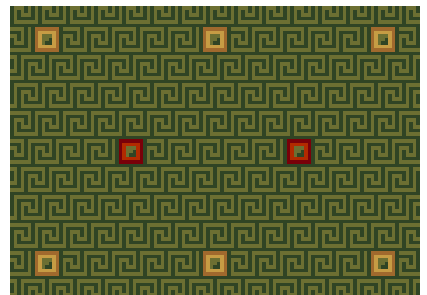
Athens Dark Gold



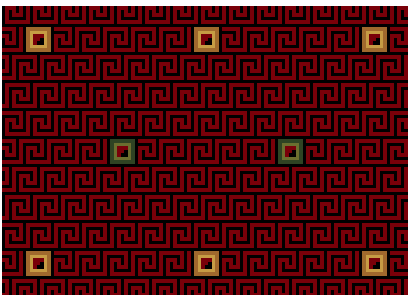
Athens Terracotta



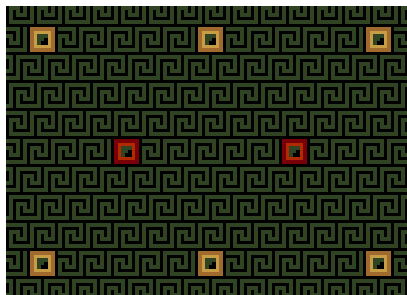
Athens Sapphire



Athens Green



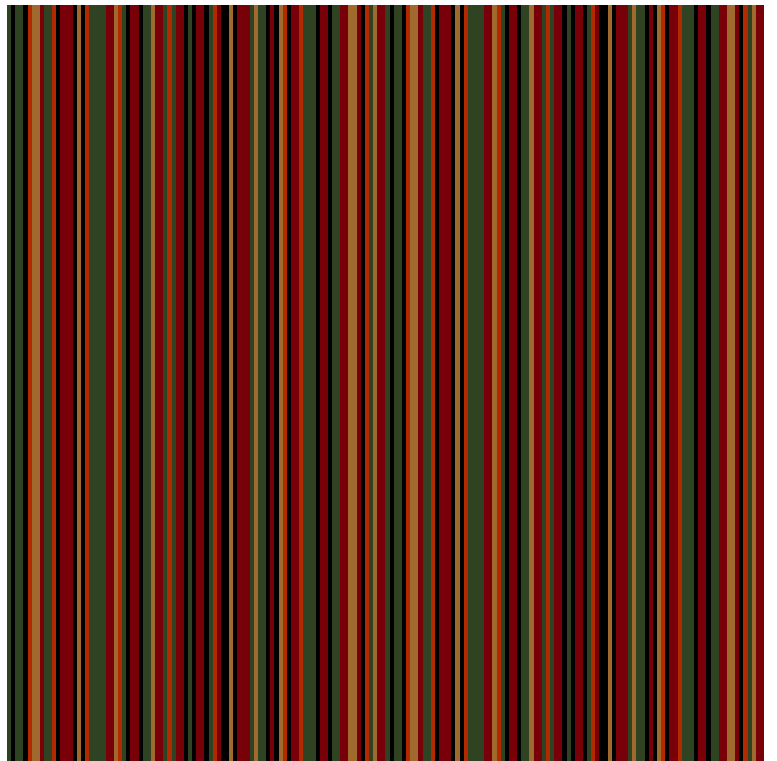
Athens Red



Athens Dark Green

Barcode

Pattern Repeat:
Length: 1 cm S/M



Barcode Dark Green



Barcode Gold



Barcode Dark Gold



Barcode Navy



Barcode Sapphire

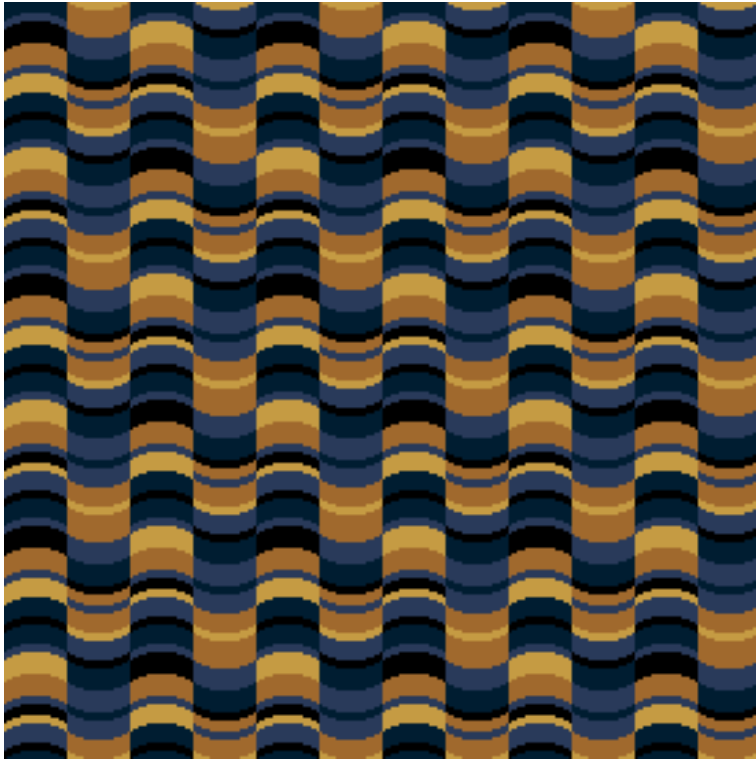


Barcode Terracotta

Breeze

Pattern Repeat:
Length: 33.4 cm S/M

Please refer to office for
quality options



Breeze Sapphire



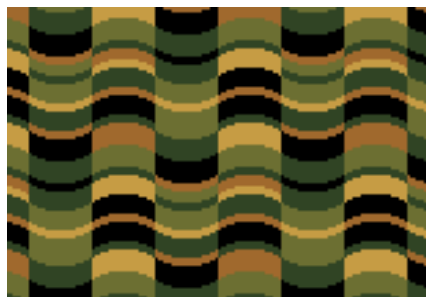
Breeze Gold



Breeze Red



Breeze Navy



Breeze Green

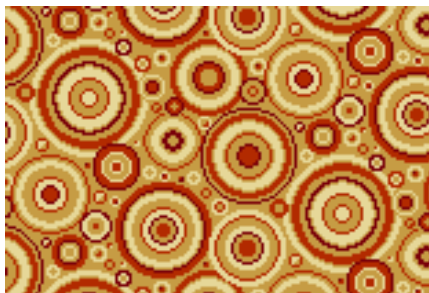
Bullseye

Pattern Repeat:
Length: 30.8 cm S/M

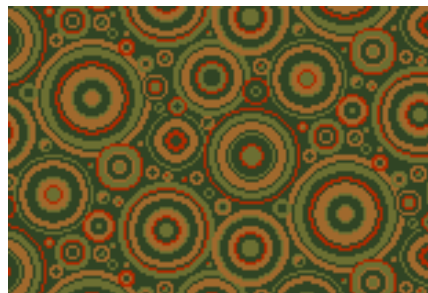
Please refer to office for
quality options



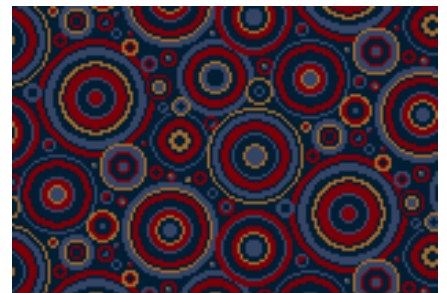
Bullseye Black



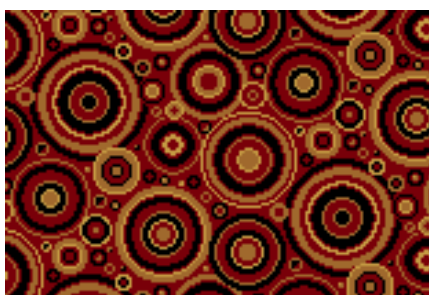
Bullseye Gold



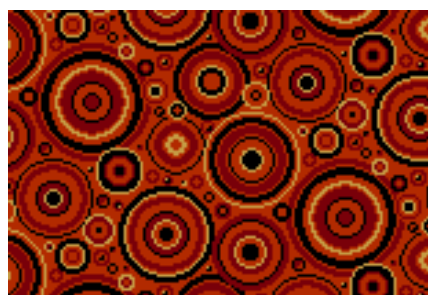
Bullseye Dark Green



Bullseye Navy



Bullseye Red



Bullseye Terracotta

Corbridge

Pattern Repeat:
Length: 50.1 cm S/M



Corbridge Red



Corbridge Dark Gold



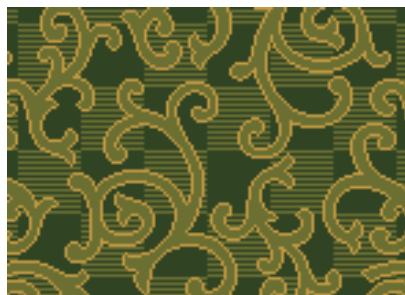
Corbridge Dark Green



Corbridge Navy



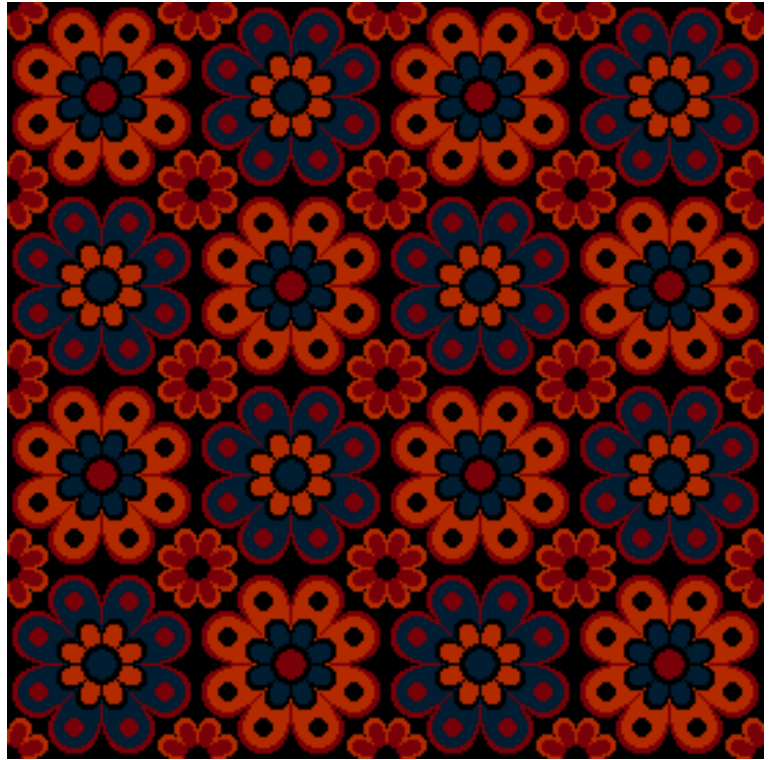
Corbridge Black



Corbridge Green

Daisy

Pattern Repeat:
Length:50.1 cm S/M



Daisy Black



Daisy Dark Green



Daisy Green



Daisy Terracotta



Daisy Dark Gold



Daisy Red



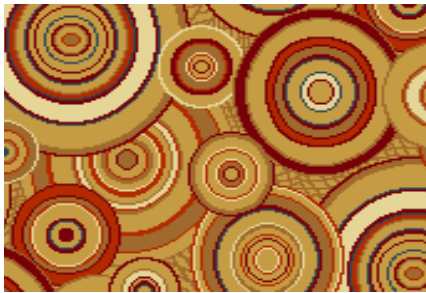
Daisy Navy

Disco

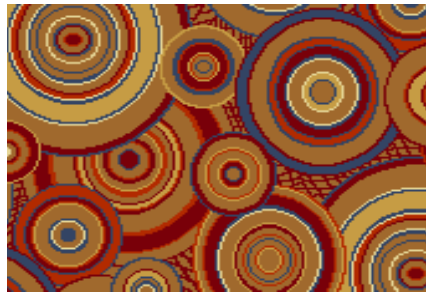
Pattern Repeat:
Length: 69 cm S/M



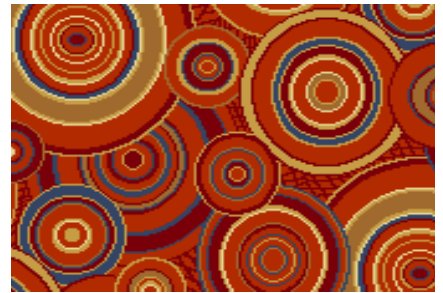
Disco Black



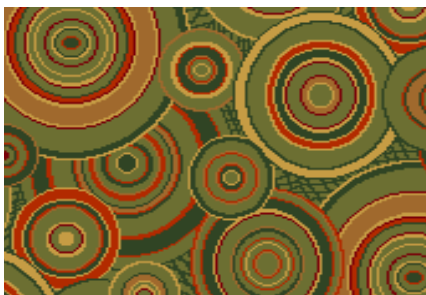
Disco Gold



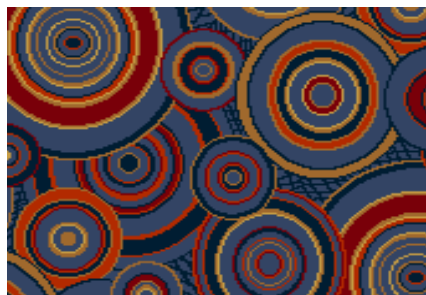
Disco Dark Gold



Disco Terracotta



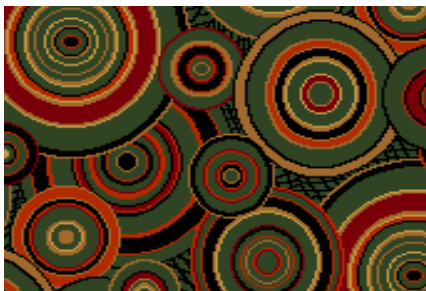
Disco Green



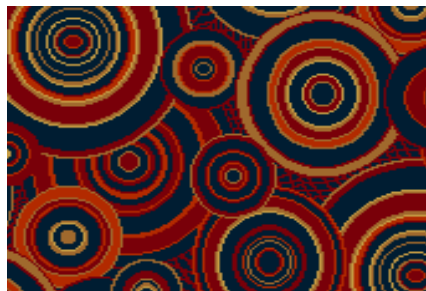
Disco Sapphire



Disco Red



Disco Dark Green



Disco Navy

Dune

Pattern Repeat:
Length: 33.6 cm S/M



Dune Cream



Dune Sapphire



Dune Terracotta



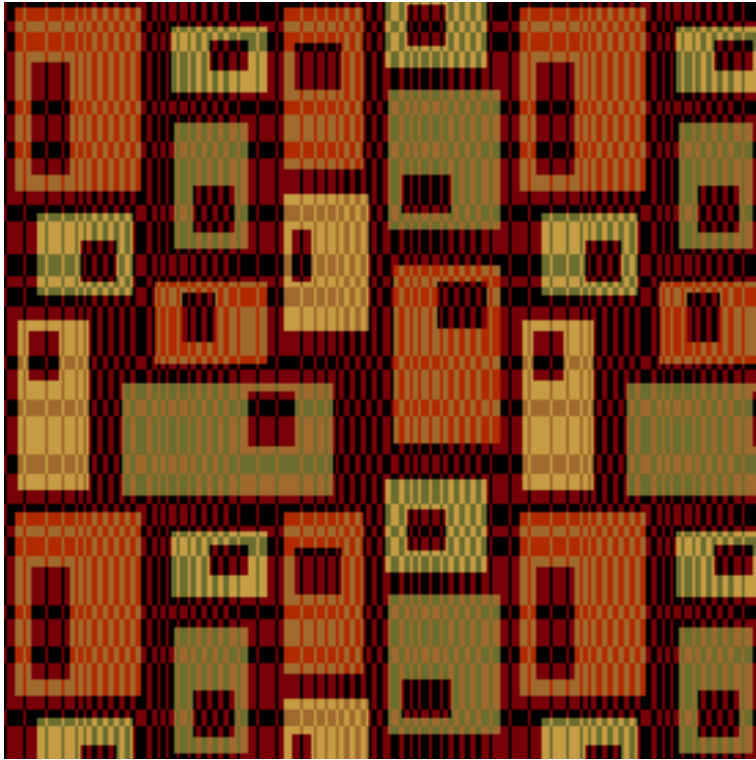
Dune Gold



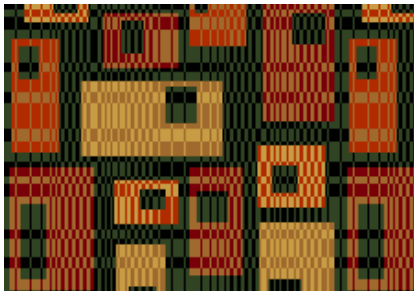
Dune Green

Illusion

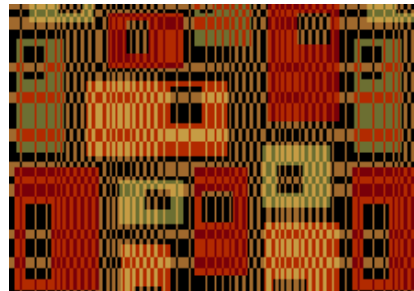
Pattern Repeat:
Length: 66.8 cm S/M



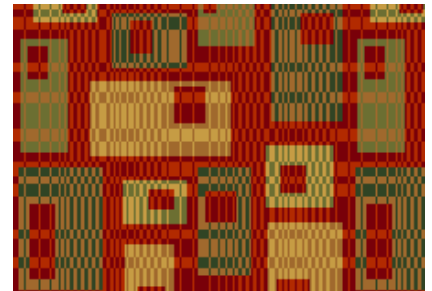
Illusion Red



Illusion Dark Green



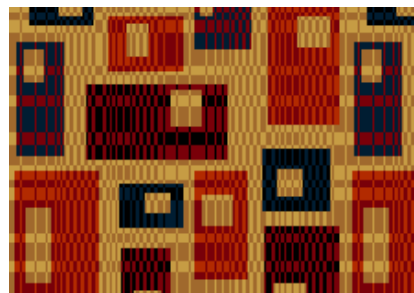
Illusion Black



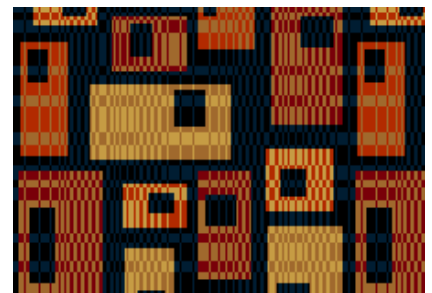
Illusion Terracotta



Illusion Green



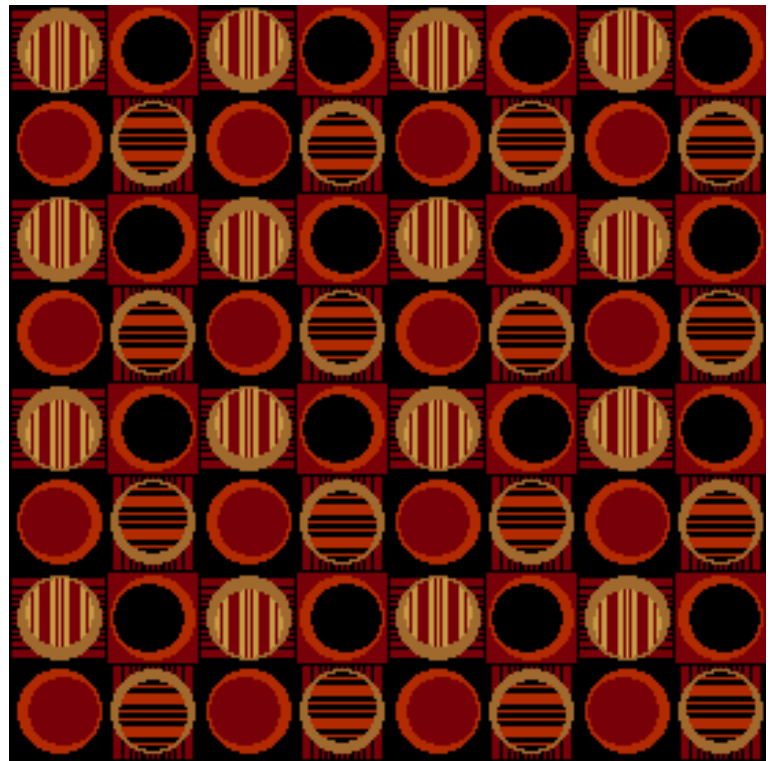
Illusion Gold



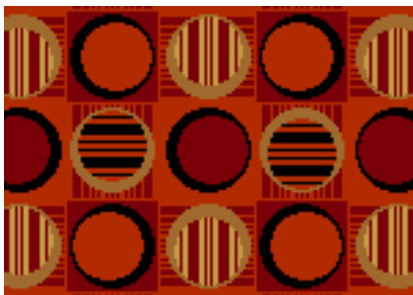
Illusion Navy

Lunar

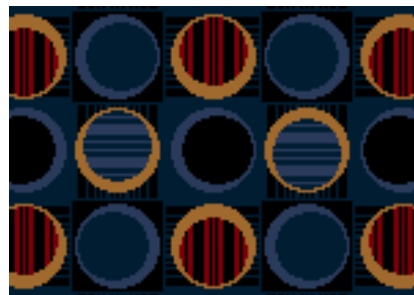
Pattern Repeat:
Length: 50.1 cm S/M



Lunar Black



Lunar Terracotta



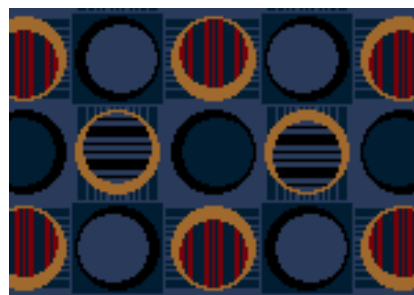
Lunar Navy



Lunar Dark Gold



Lunar Red



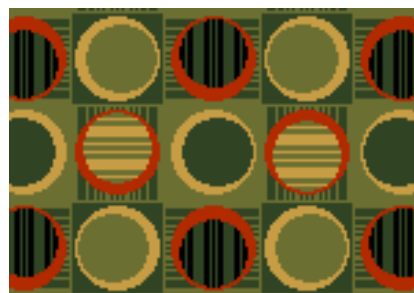
Lunar Sapphire



Lunar Gold



Lunar Dark Green



Lunar Green

Kenya

Pattern Repeat:
Length: 32.2 cm S/M



Kenya Terracotta



Kenya Sapphire



Kenya Dark Green



Kenya Dark Gold



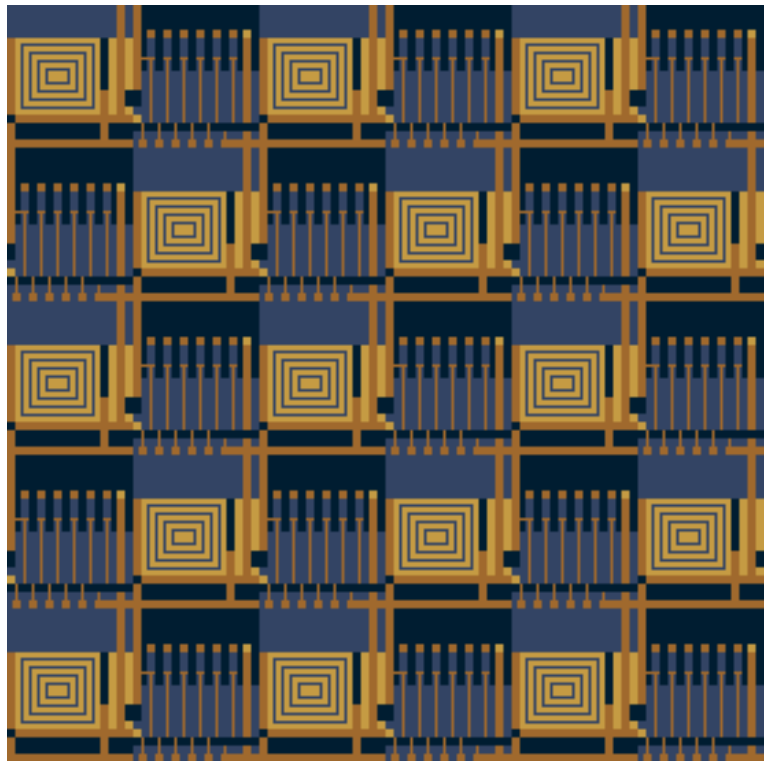
Kenya Red



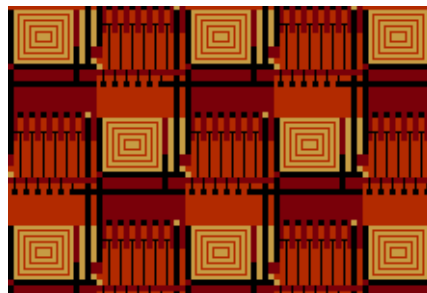
Kenya Green

Manhattan

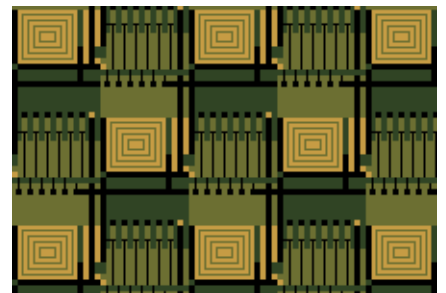
Pattern Repeat:
Length: 41 cm S/M



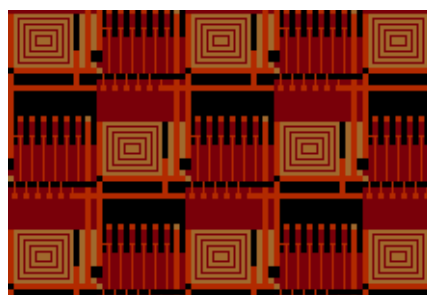
Manhattan Sapphire



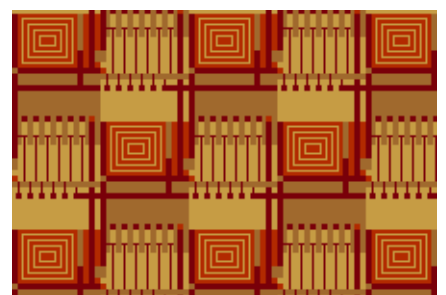
Manhattan Terracotta



Manhattan Dark Green



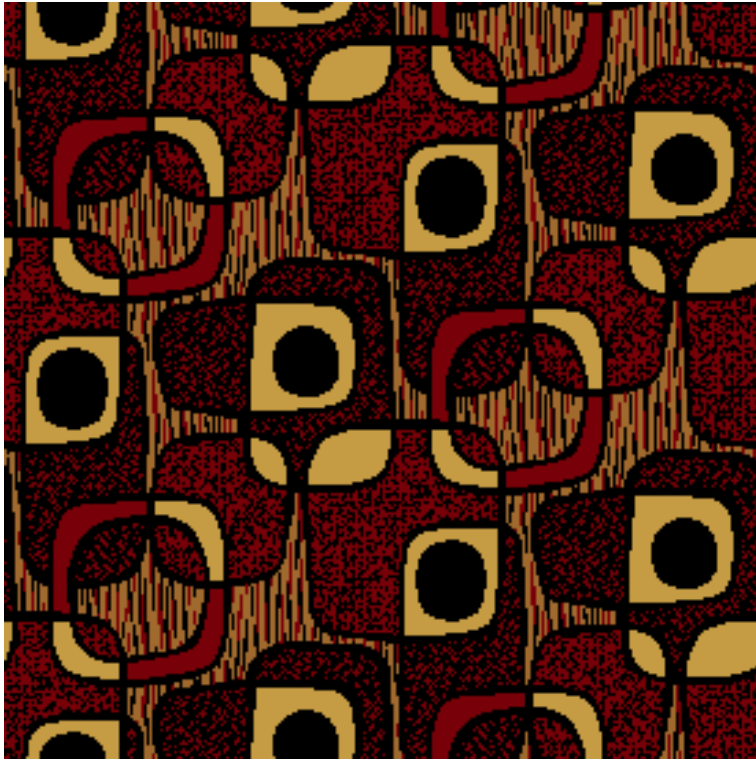
Manhattan Red



Manhattan Dark Gold

Miera

Pattern Repeat:
Length: 51.3 cm S/M



Miera Red



Miera Gold



Miera Dark Gold



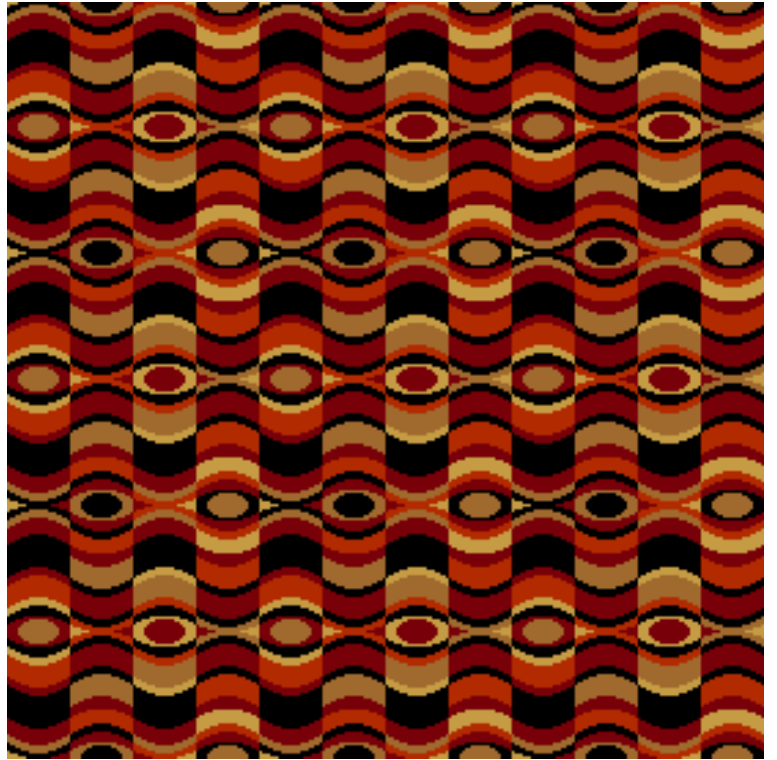
Miera Terracotta



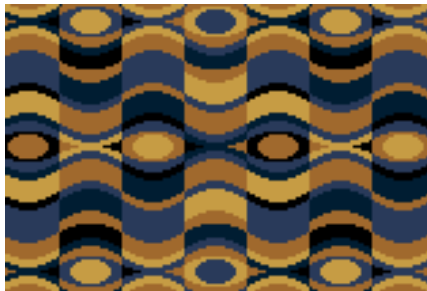
Miera Sapphire

Mirage

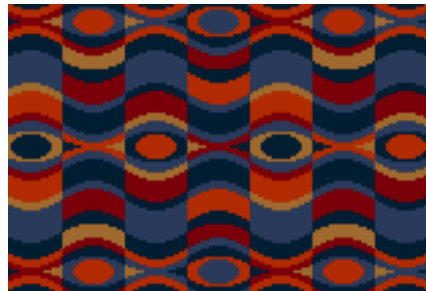
Pattern Repeat:
Length:33.4 cm S/M



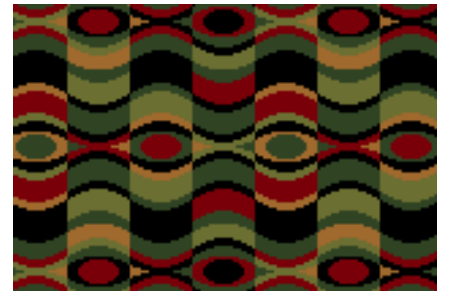
Mirage Red



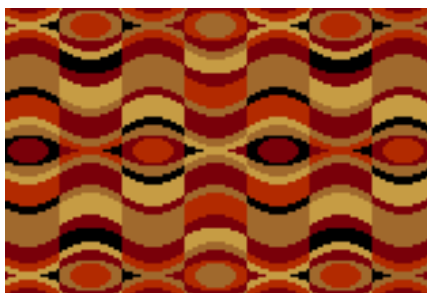
Mirage Sapphire



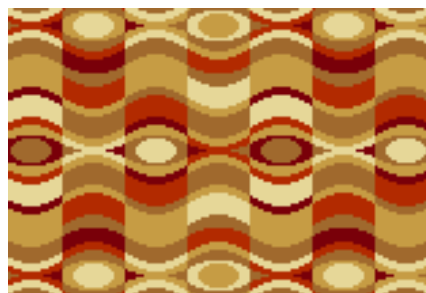
Mirage Navy



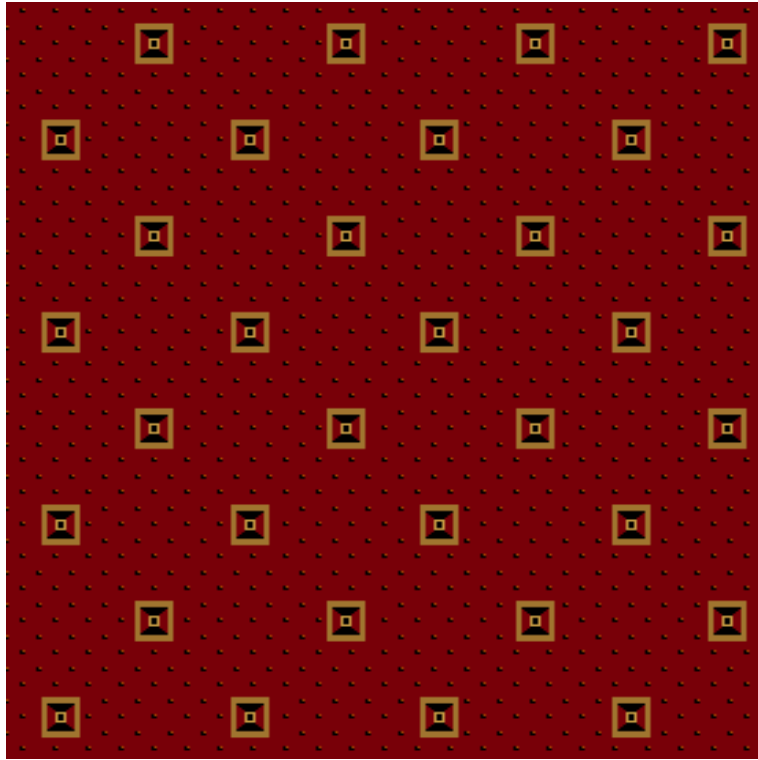
Mirage Green



Mirage Dark Gold



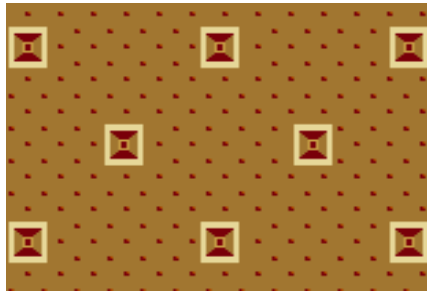
Mirage Gold



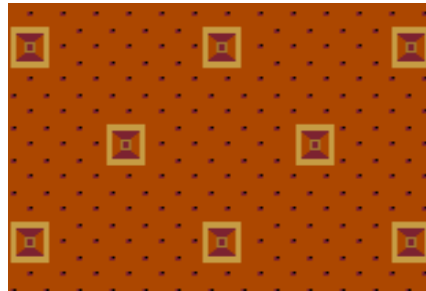
Modena

Pattern Repeat:
Length: 25.4 cm S/M

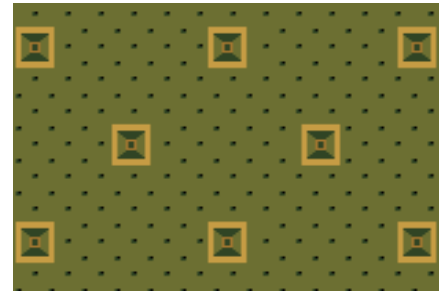
Modena Red



Modena Dark Gold



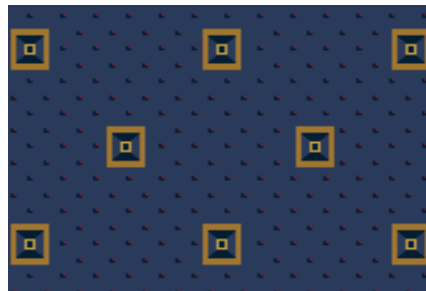
Modena Terracotta



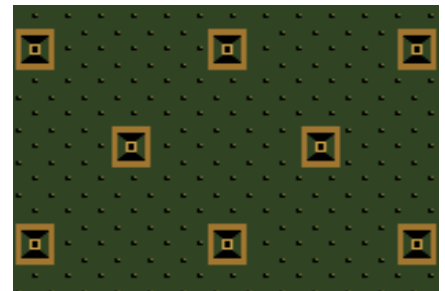
Modena Green



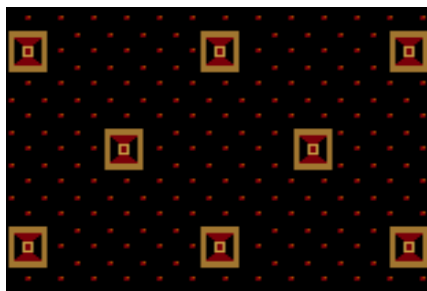
Modena Navy



Modena Sapphire



Modena Dark Green



Modena Black

Patchwork

Pattern Repeat:
Length: 33.7 cm S/M



Patchwork Terracotta



Patchwork Green



Patchwork Dark Green



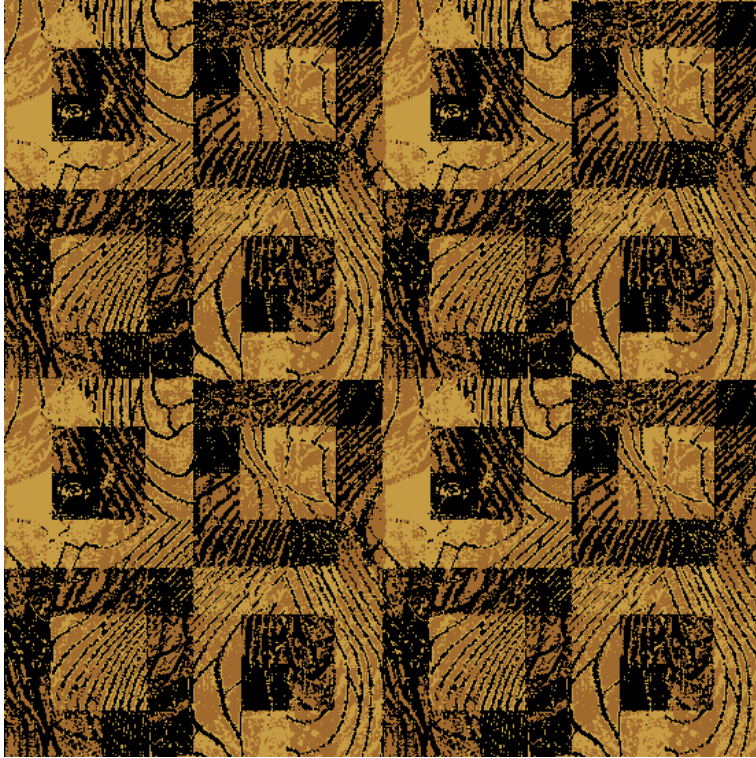
Patchwork Red



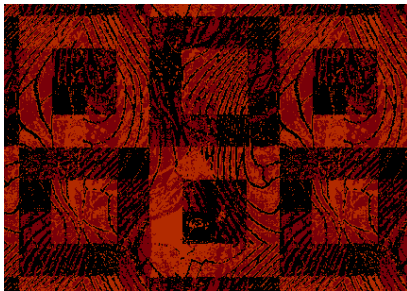
Patchwork Sapphire

Parquet

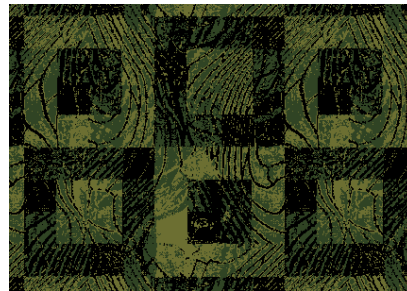
Pattern Repeat:
Length: 90.0 cm S/M



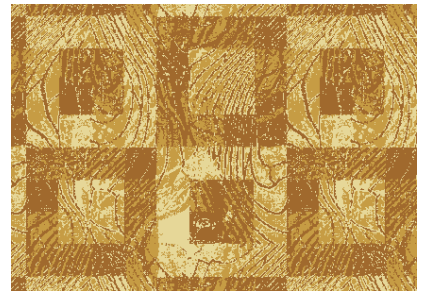
Parquet Dark Gold



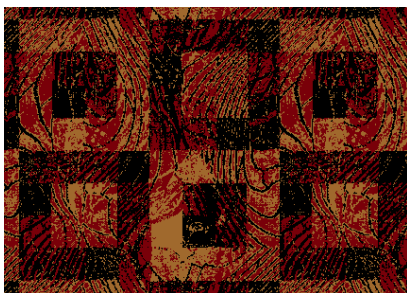
Parquet Red



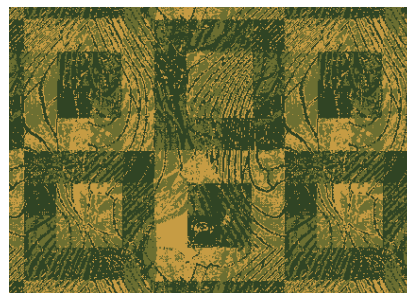
Parquet Dark Green



Parquet Gold



Parquet Red-Gold



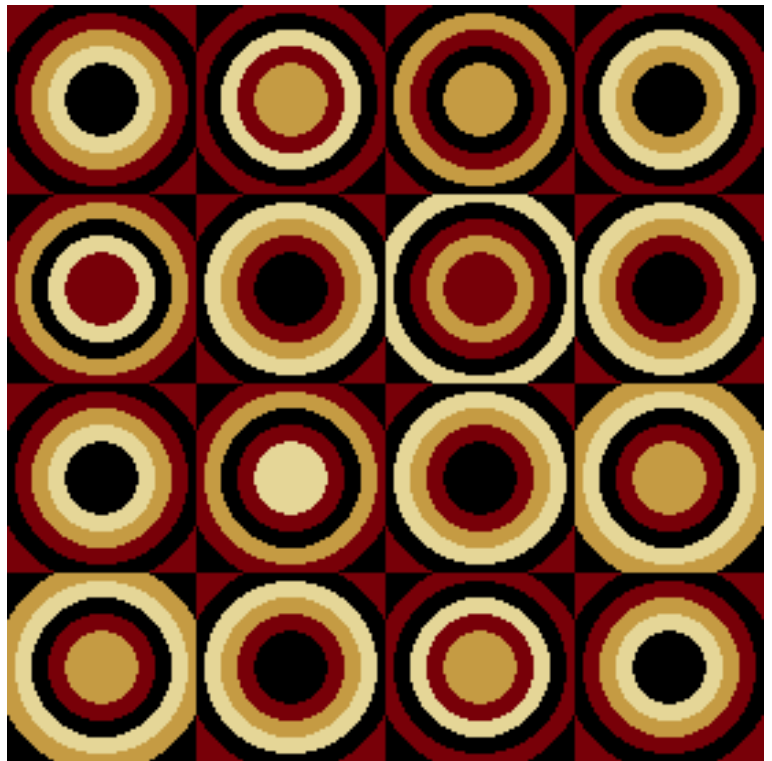
Parquet Green



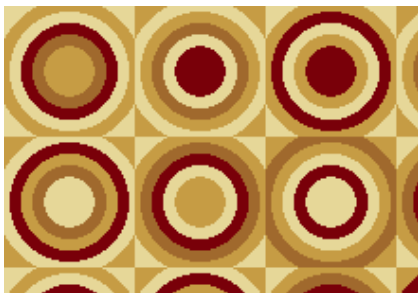
Parquet Navy

Quatro

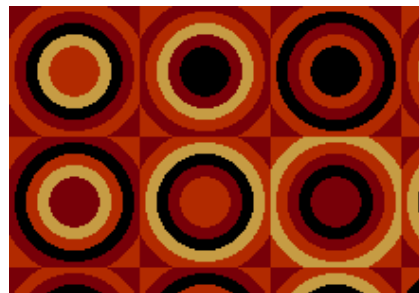
Pattern Repeat:
Length:95.1 cm S/M



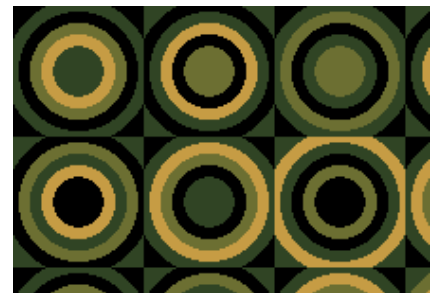
Quatro Red



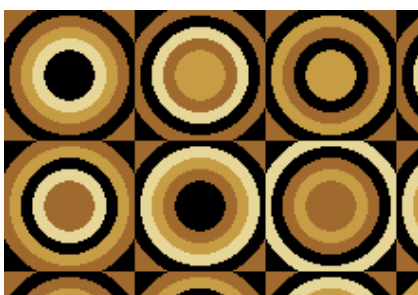
Quatro Gold



Quatro Terracotta



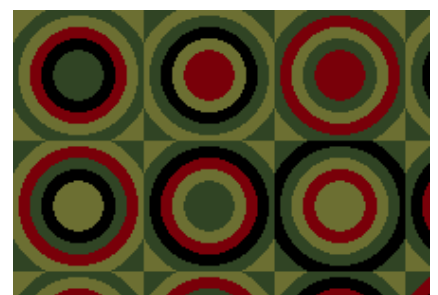
Quatro Dark Green



Quatro Dark Gold



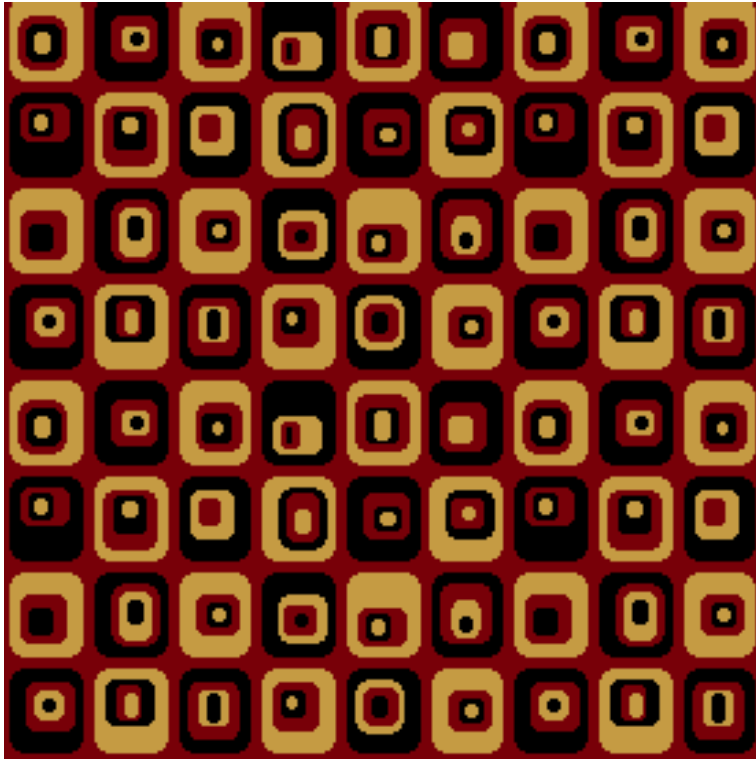
Quatro Sapphire



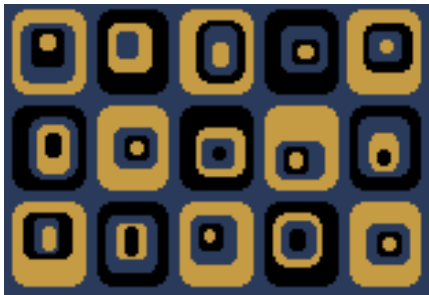
Quatro Green

Retro

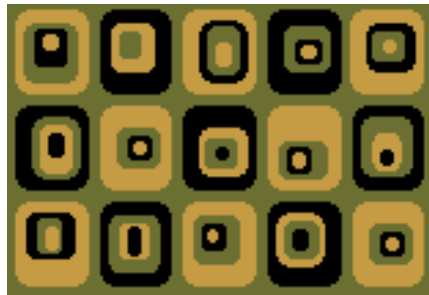
Pattern Repeat:
Length: 51.3 cm S/M



Retro Red



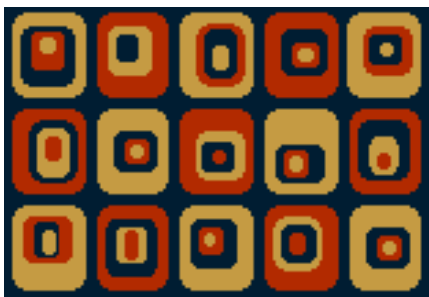
Retro Sapphire



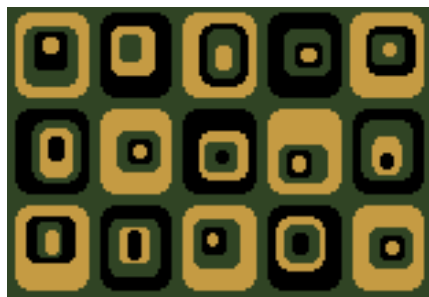
Retro Green



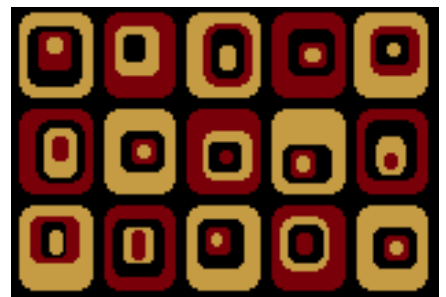
Retro Dark Gold



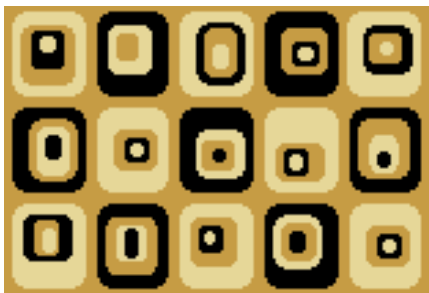
Retro Navy



Retro Dark Green



Retro Black



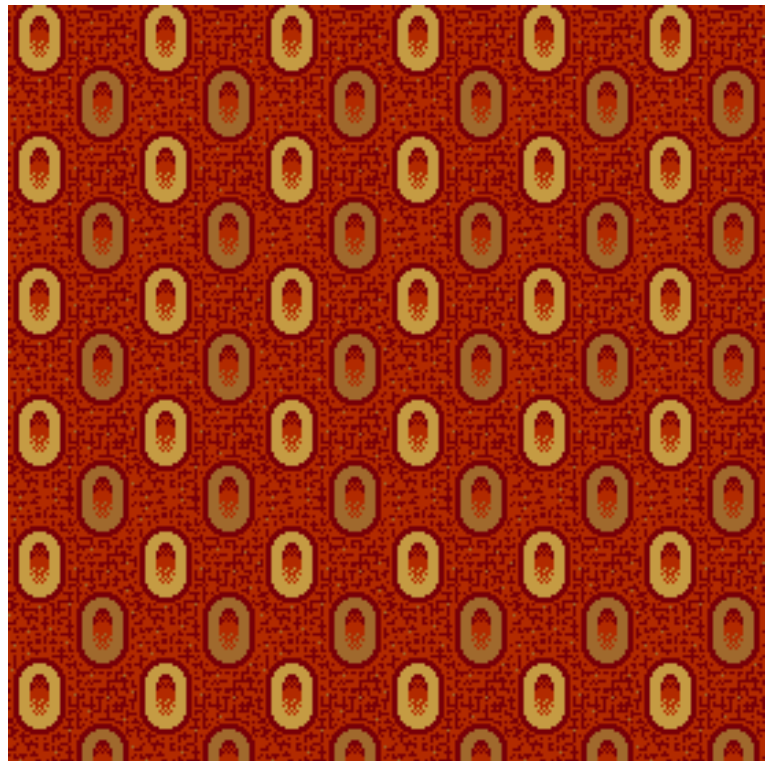
Retro Gold



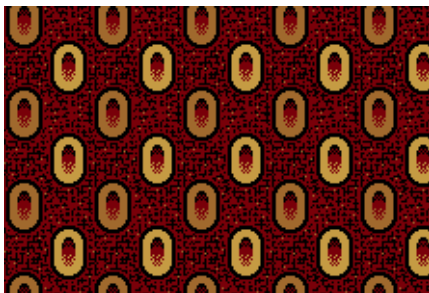
Retro Terracotta

Ringo

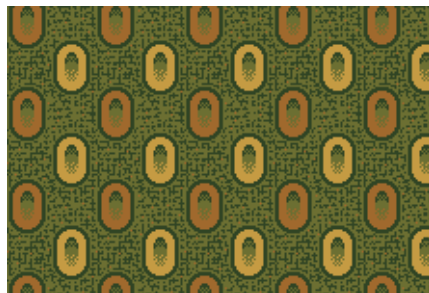
Pattern Repeat:
Length:35.2 cm S/M



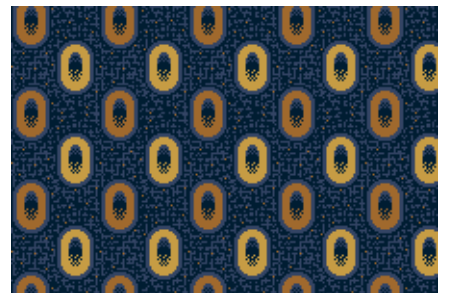
Ringo Terracotta



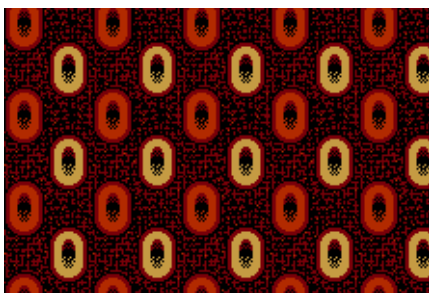
Ringo Red



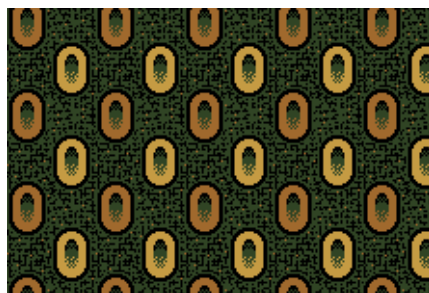
Ringo Green



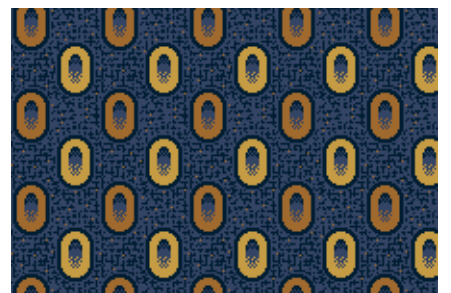
Ringo Navy



Ringo Black



Ringo Dark Green



Ringo Sapphire

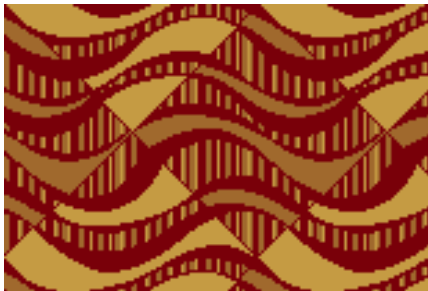


Sahara

Pattern Repeat:
Length: 33.7 cm S/M



Sahara Sapphire



Sahara Gold



Sahara Terracotta



Sahara Red



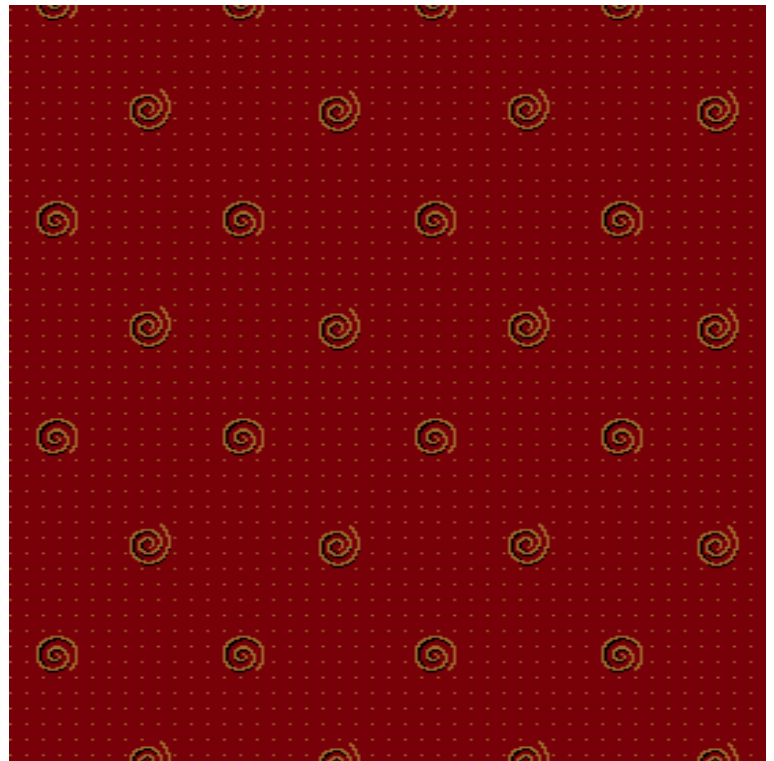
Sahara Dark Gold



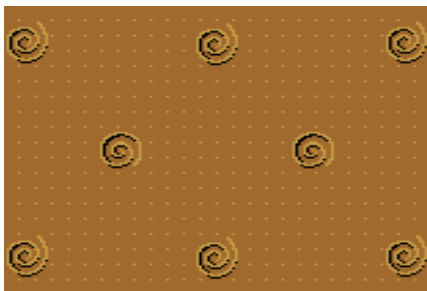
Sahara Green

Swirl

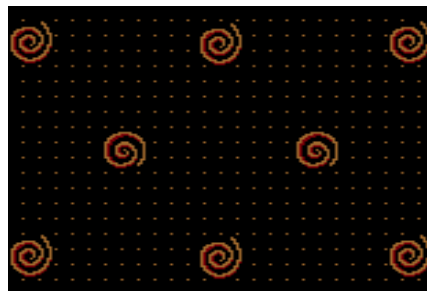
Pattern Repeat:
Length: 28.4 cm S/M



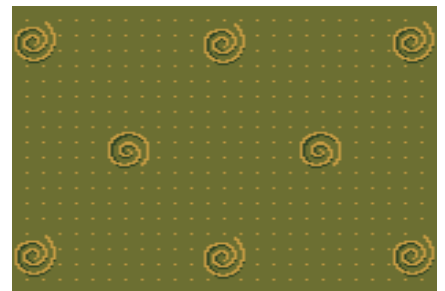
Swirl Red-Gold



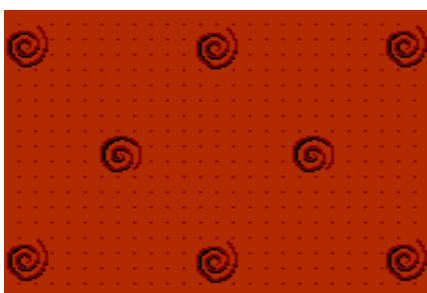
Swirl Dark Gold



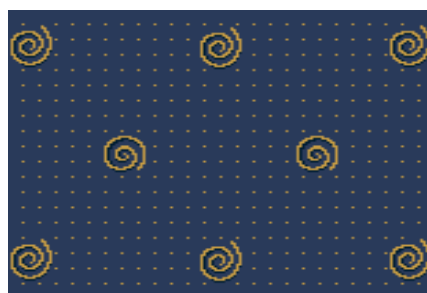
Swirl Black



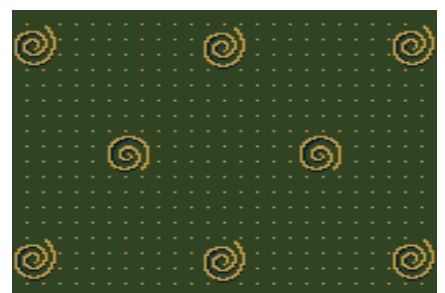
Swirl Green



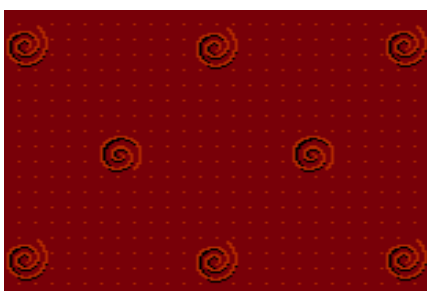
Swirl Terracotta



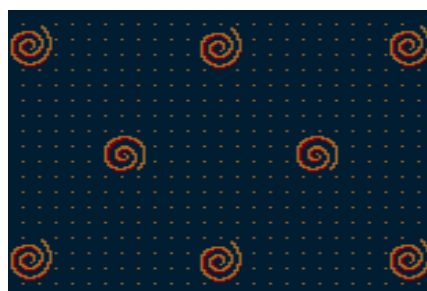
Swirl Sapphire



Swirl Dark Green



Swirl Red



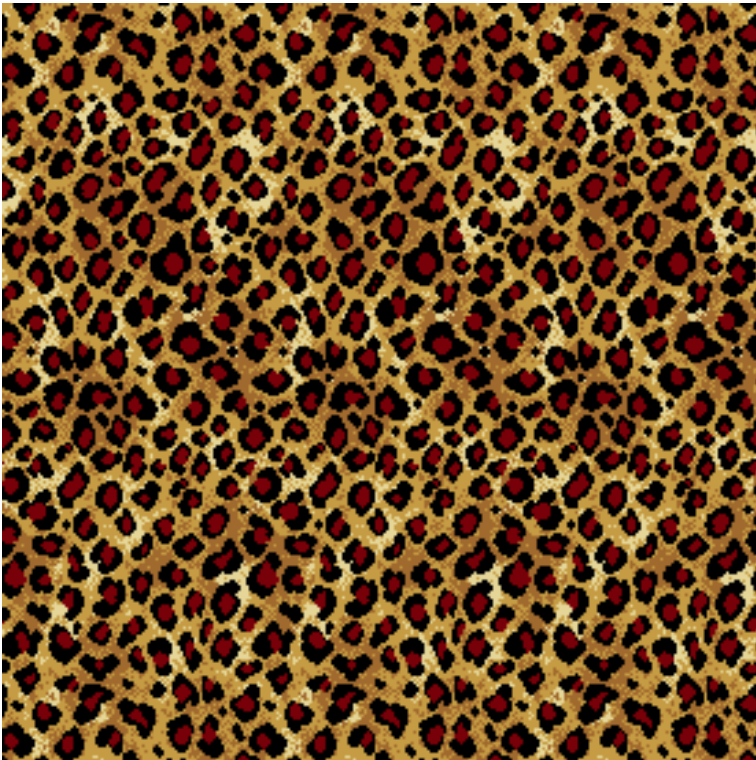
Swirl Navy



Ocelot

Ocelot

Pattern Repeat:
Length:41 cm S/M



Leopard

Leopard

Pattern Repeat:
Length:89.4 cm S/M

Snake

Pattern Repeat:
Length: 1.15 cm S/M

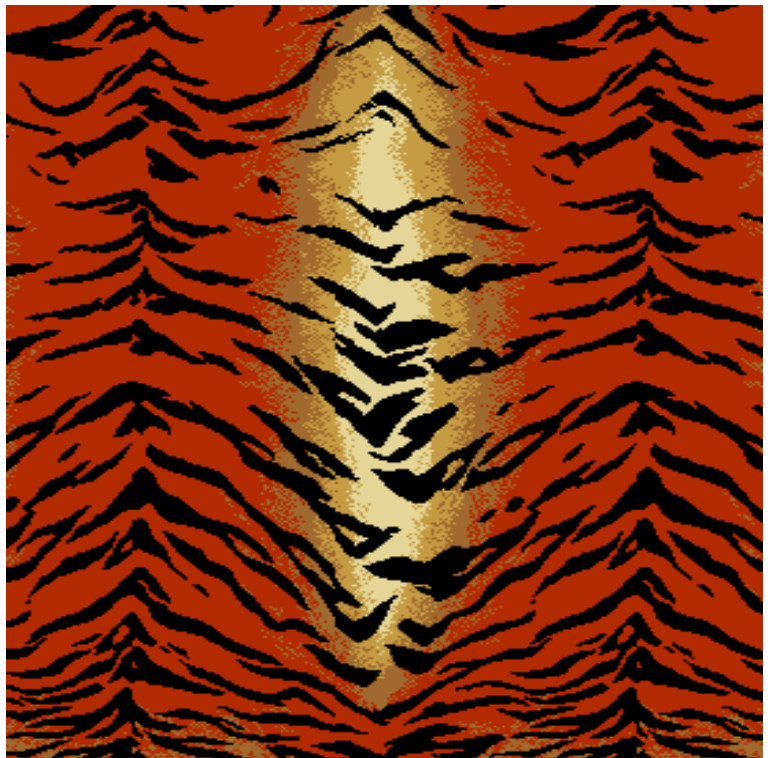


Snake

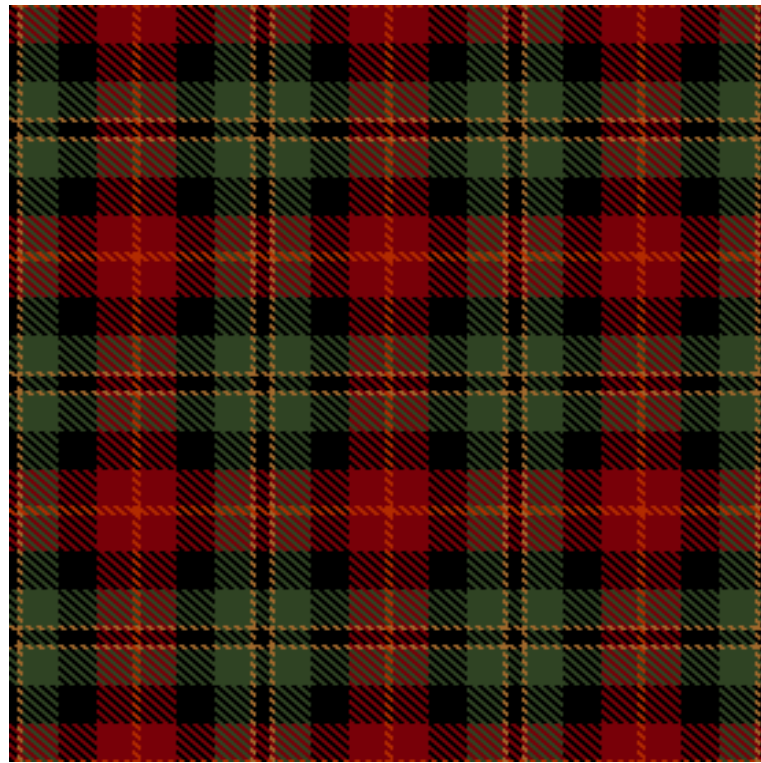
animal
 SKINS

Tiger

Pattern Repeat:
Length: 1.14 cm S/M



Tiger



Highland

Pattern Repeat:
Length: 33.6 cm S/M

tartans
& plaids

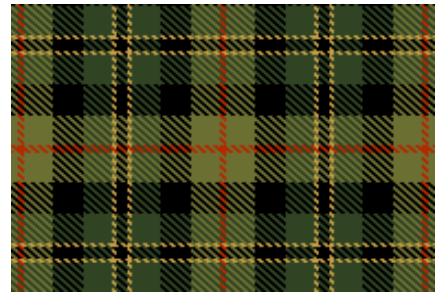
Highland Red



Highland Terracotta



Highland Sapphire



Highland Green



Highland Gold

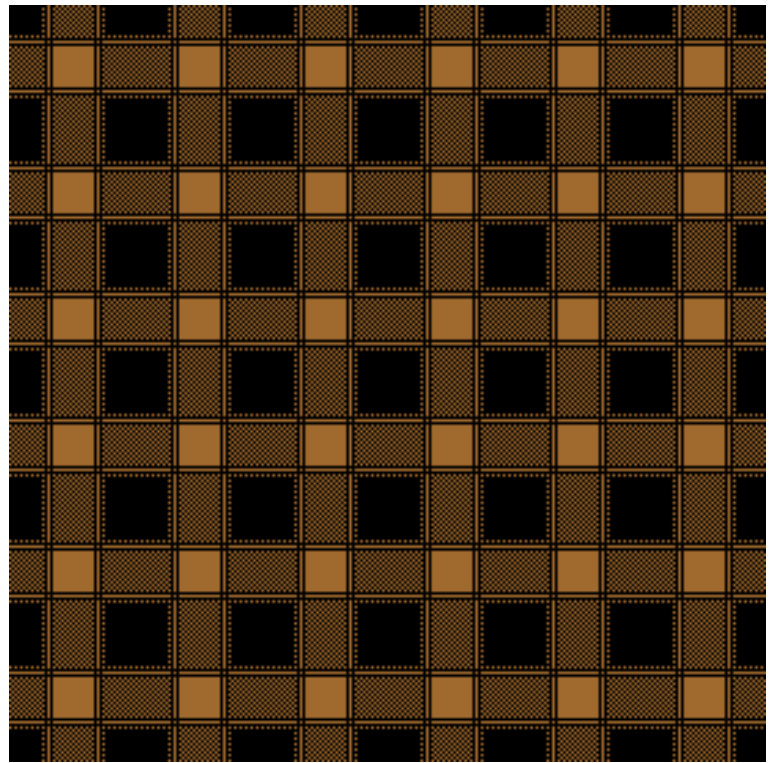


Highland Navy

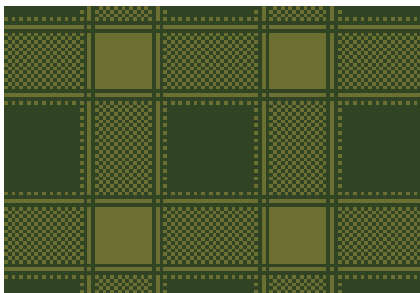
Plaid

Pattern Repeat:
Length: 16.7 cm S/M

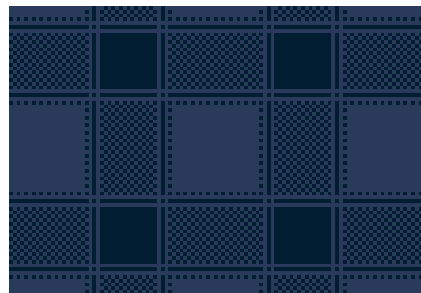
tartans
 & plaids



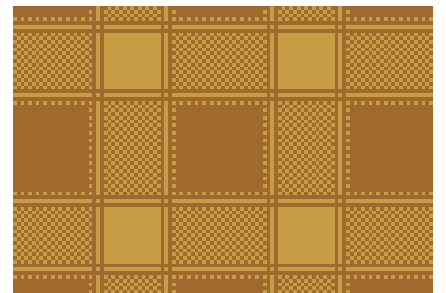
Plaid Black Gold



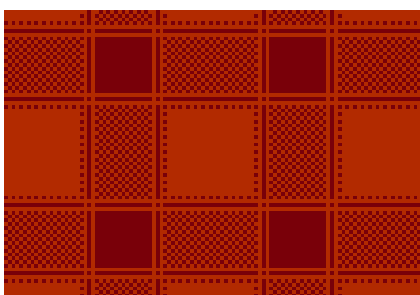
Plaid Dark Green



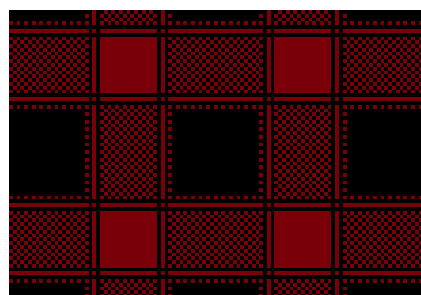
Plaid Sapphire



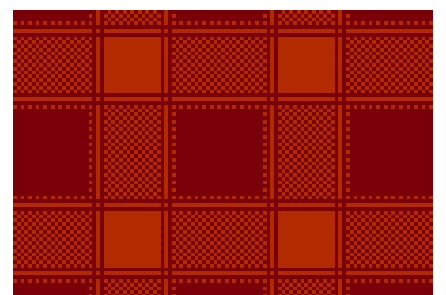
Plaid Dark Gold



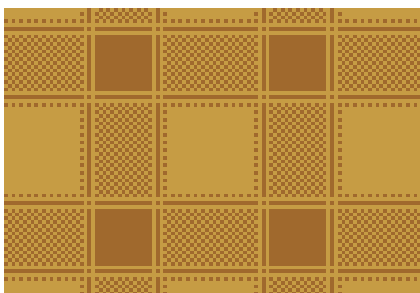
Plaid Terracotta



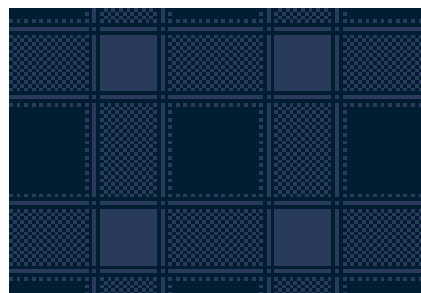
Plaid Black



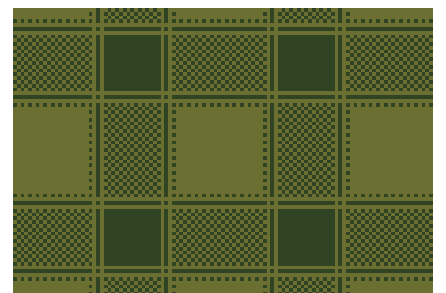
Plaid Red



Plaid Gold



Plaid Navy

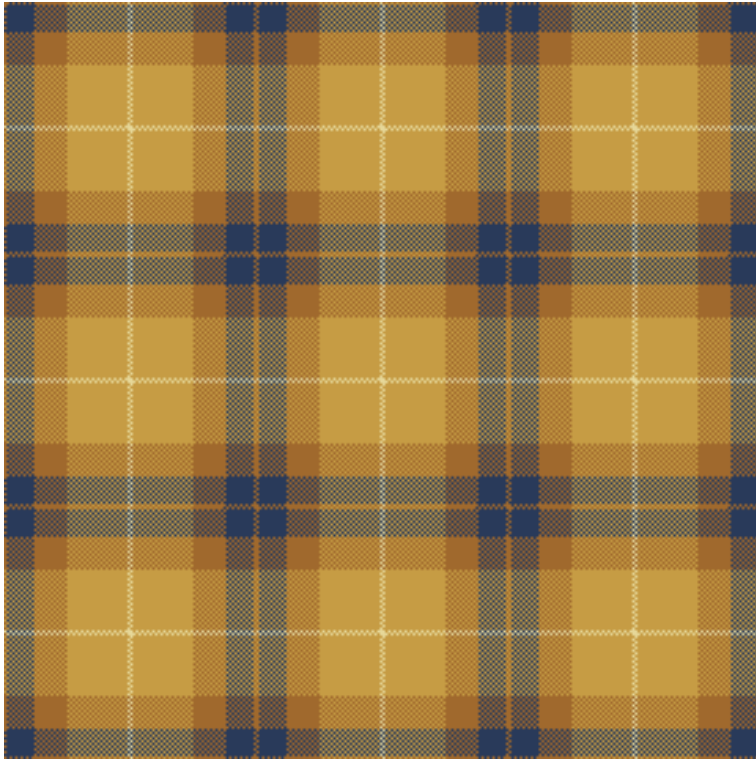


Plaid Green

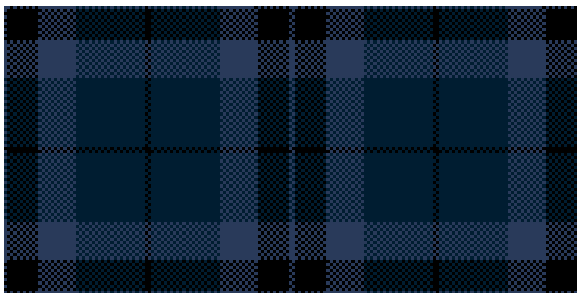
Tartan

Pattern Repeat:
Length: 33.3 cm S/M

tartans
& plaids



Tartan Gold



Tartan Navy



Tartan Green



Tartan Dark Green



Tartan Black



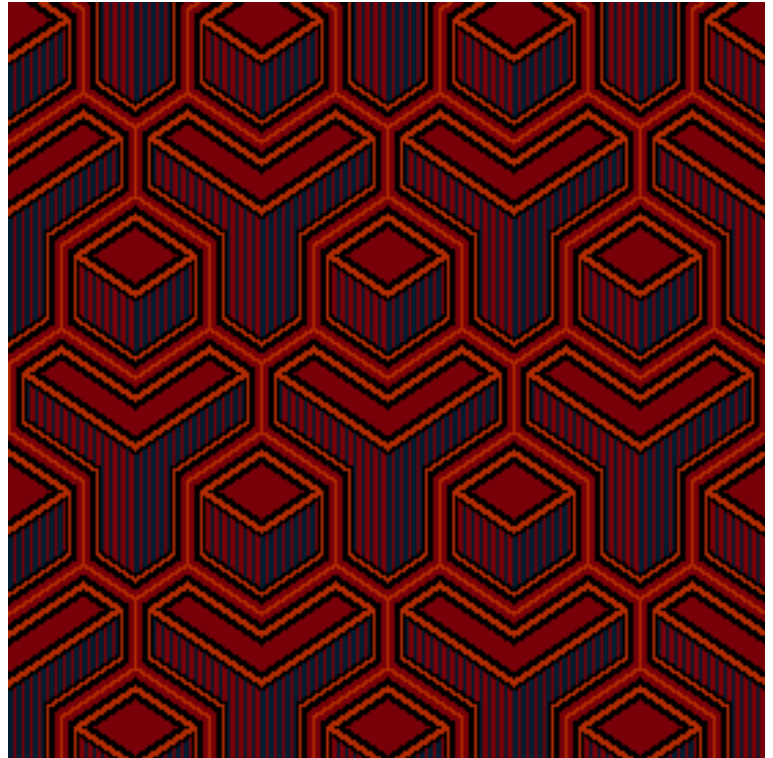
Tartan Terracotta



Tartan Red

Escher

Pattern Repeat:
Length:62.4 cm S/M



Escher Red



Escher Sapphire



Escher Dark Green



Escher Dark Gold



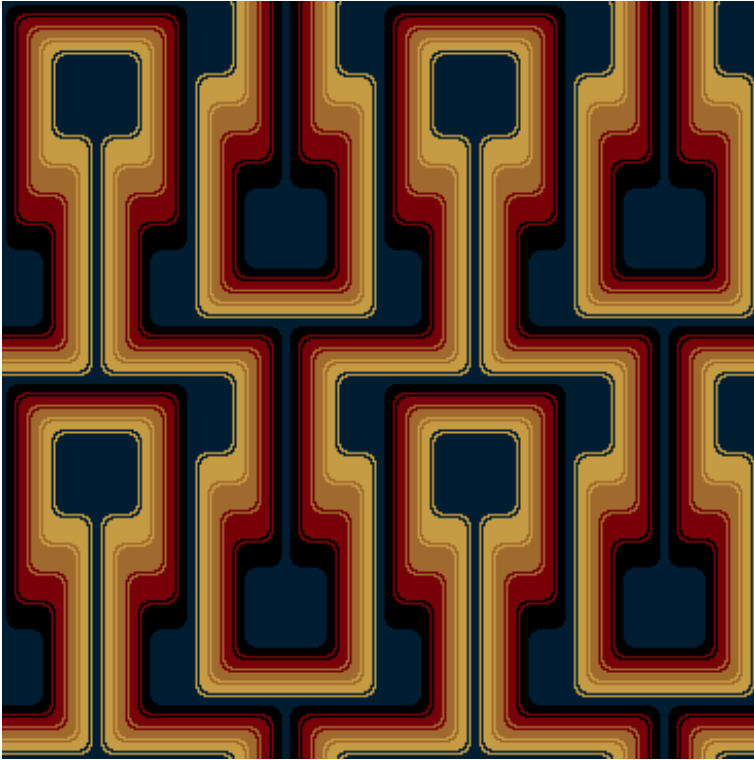
Escher Navy



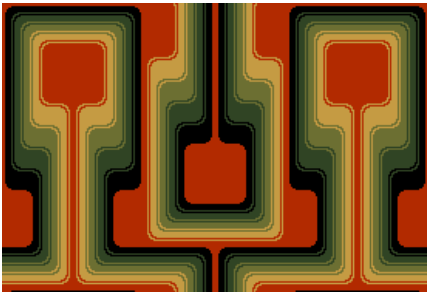
Escher Green

Groovy

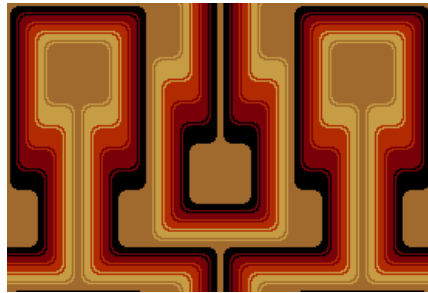
Pattern Repeat:
Length: 66.8 cm S/M



Groovy Navy



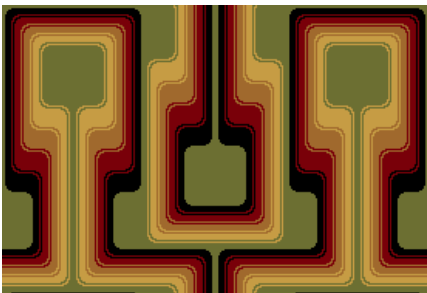
Groovy Terracotta



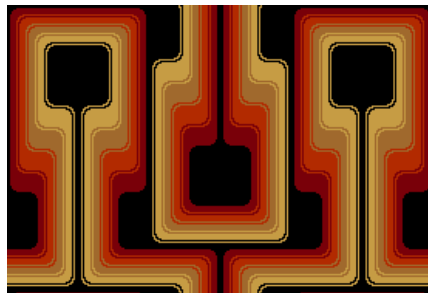
Groovy Dark Gold



Groovy Red



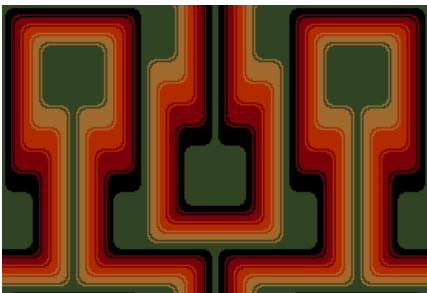
Groovy Green



Groovy Black



Groovy Sapphire



Groovy Dark Green

Spectrum Palette

Quality	Pitch (per inch)	Row (per inch)	Pile Weight (g/msq)	Width (m)	Appearance Class	Luxury rating
Windermere	7	6	920	4	23/32 General Commercial use	LC3
Derwent	7	7	1070	4	33-Heavy Commercial use	LC4
Grassmere	7	8	1225	4	33-Heavy Commercial use	LC4
Coniston	7	9	1380	4	33-Heavy Commercial use	LC4
Ullswater(spike resist)	7	10	1530	4	33-Heavy Commercial use	LC4

quality selection

The qualities detailed in the matrix above represent specifications which should satisfy most commercial requirements. With each particular installation, the decision on which quality is most appropriate will depend on the levels of traffic and the length of time the carpet is expected to be installed.

Gaskell Mackay have many years of experience in these considerations and provide detailed advice on quality selection on a project by project basis. Technical specifications are available on request.

colour and design

Colour and the presence or absence of a pattern can have a significant bearing on the long term appearance retention of the carpet. As a general rule, darker red, brown and grey tones are much less sensitive in displaying soiling than the equivalent blue, green or purple shades. All light colours are dirt sensitive, while highly patterned carpets tend to hide dirt, cigarette burns and stains.

Other aspects will also influence the choice of colour. For example, the light in a building (natural or artificial) can have a dramatic effect on the apparent colour of the carpet. Therefore carpet samples should be viewed under different light sources to ascertain their apparent colours.

planning and estimation service

Using the latest Callidus planning software, Gaskell Mackay can accurately estimate carpet requirements from site plans to any scale. Accurate waste estimations can be readily calculated and adjustments made to minimise this.

One critical area of importance is seam placement. Knowledge of customer flow through the area is used to guide the fitter in the careful positioning of seams to avoid premature wear. The planning and estimation service is free.

samples

Samples of all the designs and colourways illustrated (along with many others) can be obtained and are usually available within 72 hours.

installation

The 'Infinity' range of carpet qualities which includes Windermere, Derwent and Coniston are produced on a revolutionary new, high speed axminster loom and are woven without a traditional selvedge. The selvedge is trimmed during manufacturing as close as possible to the pile. Normally this allows the carpet to be joined without necessity for further trimming of the selvedge. The uniquely formed selvedge may however be trimmed by the installer if he feels the carpet has not been trimmed sufficiently to the pile and would leave a gap after seaming. Fusible yarns are woven into the selvedge to provide extra pile anchorage.

It is essential to seal the back of the carpet before cutting, particularly on cross cuts and then seal the cut edge to prevent fraying. The carpet may be seamed with heat seaming tape or electro-seaming tape (e.g. 'Silvaseam'). The carpet may be hand sewn if this is specified for border work after the carpet has been sealed and cut.

In all other respects the carpet should be installed in accordance with BS5325 (Code of Practice for the Installation of Textile Floorcoverings) and NICF Carpet Installation Manual by a trained axminster carpet installer.

There are a number of ways in which the 'Infinity' range of Gaskell Mackay qualities can be installed including stretch fitted over a suitable contact underlay on to gripper, full adhesion to a prepared subfloor or installed on double stick underlay systems. Installation on double stick underlay systems should be in accordance with the recommendations issued by Gaskell Mackay Carpets Ltd.

maintenance

Effective dirt barrier systems must be fitted in footwells in, or immediately adjacent to external entrances. Carpet maintenance must be carefully planned and this plan implemented from the moment the carpet is installed.

Maintenance methods and levels must be tailored to foot traffic intensity to prevent both inadequate or unnecessary cleaning. A cleaning schedule usually includes three levels of cleaning.

1. Regular maintenance (Daily vacuum cleaning and spot removal).
2. Intermediate "wet" cleaning or surface brightening.
3. Deep or restorative "wet" cleaning.

Depending on how effective the regular (usual daily) maintenance is, then intermediate cleaning will have to be used eventually. Effective intermediate cleaning can often postpone the need for restorative cleaning, all of which will save maintenance costs. Correct and regular maintenance will also be cost effective by increasing the lifespan of the carpet.

The above information on installation and maintenance provides general guidelines and full details on these subjects can be obtained by contacting the Contract Sales Desk on 01429 892525 or . E-MAIL sales@gaskell.co.uk



HERITAGE, BEAUTY, SERVICE

www.gaskell.co.uk