

Tartan Naturals



Ben Vorlich



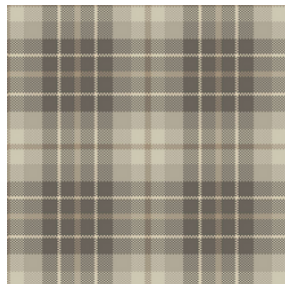
Ben Vane



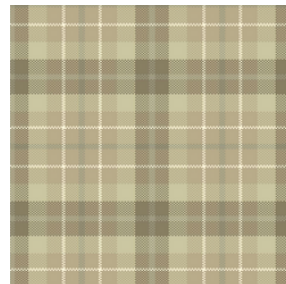
Ben Starav



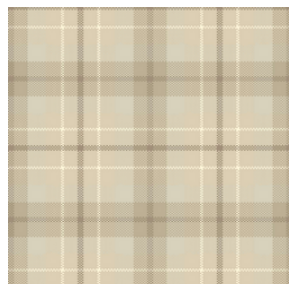
Ben Chonzie



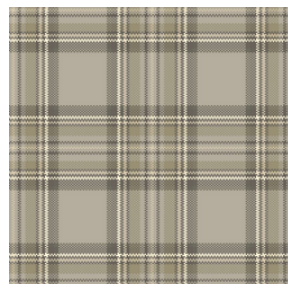
Tonal Plaid



Tartan Pine



Tartan Maple



Ben Lawers

PILE CONTENT: 80% WOOL / 20% NYLON
CONSTRUCTION: AXMINSTER
QUALITY: 7X8
PILE WEIGHT: 1225G/M2
TOTAL WEIGHT: 2070G/M2
WIDTH: 4M
BACKING: POLYESTER WEFT / POLYPROPYLENE WARP
SUITABILITY: HEAVY CONTRACT / EXTRA HEAVY DOMESTIC