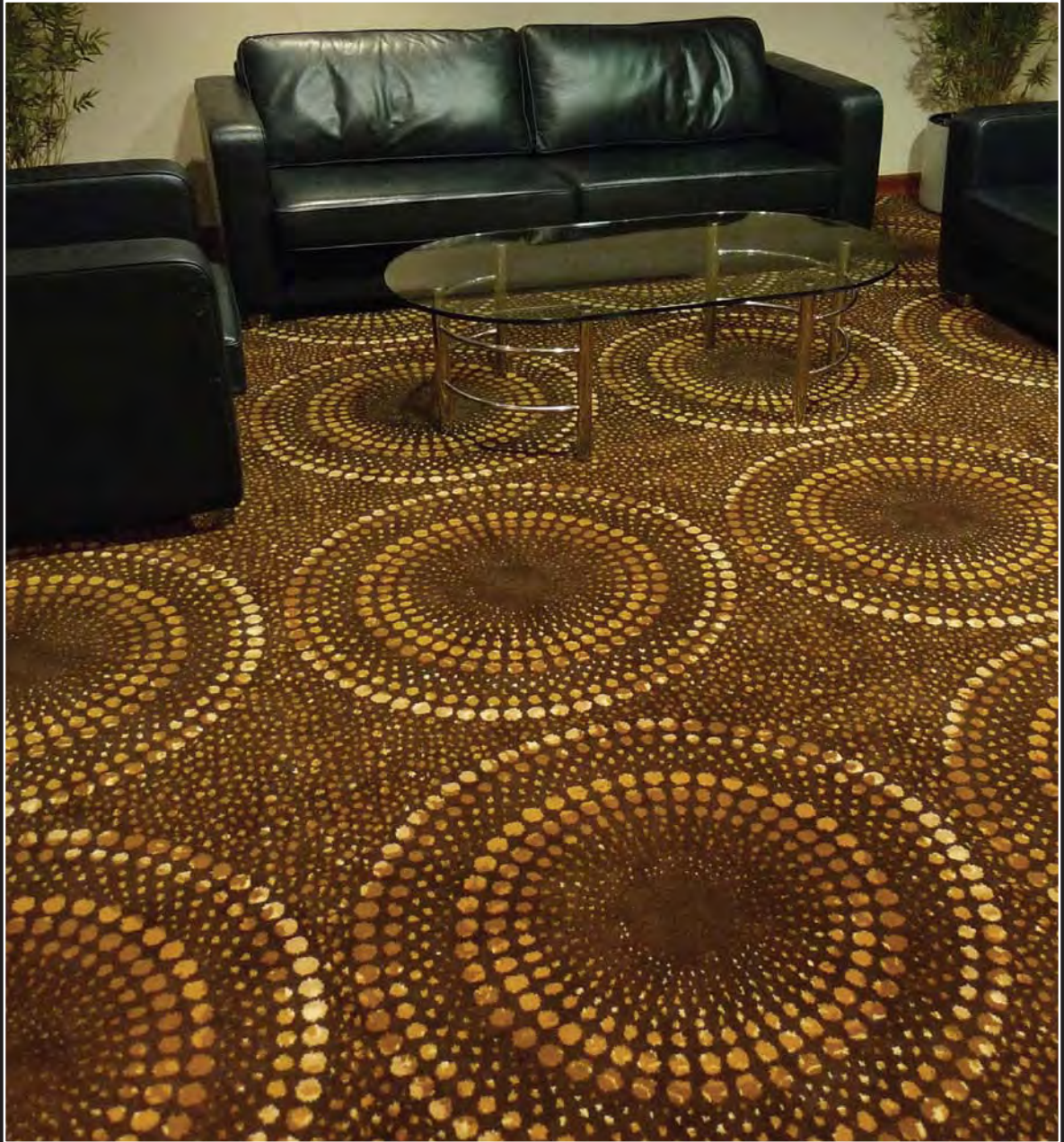


# AXMINSTER TILE COLLECTION



HERITAGE, BEAUTY, SERVICE

[www.gaskell.co.uk](http://www.gaskell.co.uk)

# Axminister Tile Collection

## Design

Axminister Carpet Tiles offer Specifiers the opportunity to choose from our selection of existing tile designs or to create a bespoke design/colourway in a modular format to suite any scheme. Tiles are available in two standard sizes 50cms x 50cms or 91 cms x 91 cms

## Flexibility

Carpet tiles are established as a flexible format for installations with specific needs such as:

- Raised access floors
- Curved or unusual shaped areas
- Casinos
- Auditoriums
- Theatres
- Conference centres
- Areas of concentrated traffic

## Luxury

Axminister Tiles facilitate the introduction of high design and quality not available from tufted tiles, into projects requiring a modular format.

## Durability

Axminister Tiles are available in qualities suitable for heavy and extra heavy contract environments.

## Practicality

With a choice of bitumen or comfort backing any project requirements can be met.

Minimum order quantities;

- Infinity colour palettes 100msq
- Custom colour palettes 300msq

For more information and design options please contact us on:  
01429 892525  
or via e-mail to [info@gaskell.co.uk](mailto:info@gaskell.co.uk)

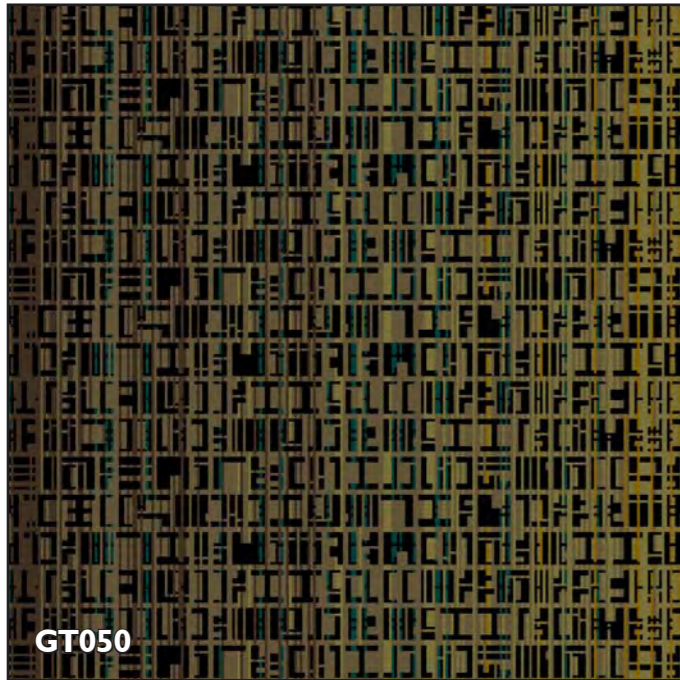


## Sampling

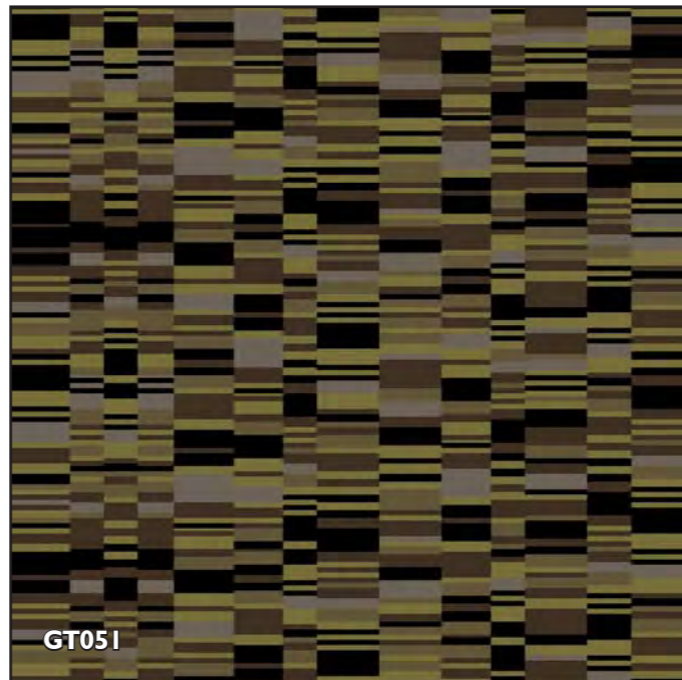
Once you have selected the best tile design for your project, nothing can compare with the realism provided by a physical colour sample.

We have two 'kibby' machines dedicated to producing highly accurate individual colour samples and aim to dispatch these to you within 72 hours.

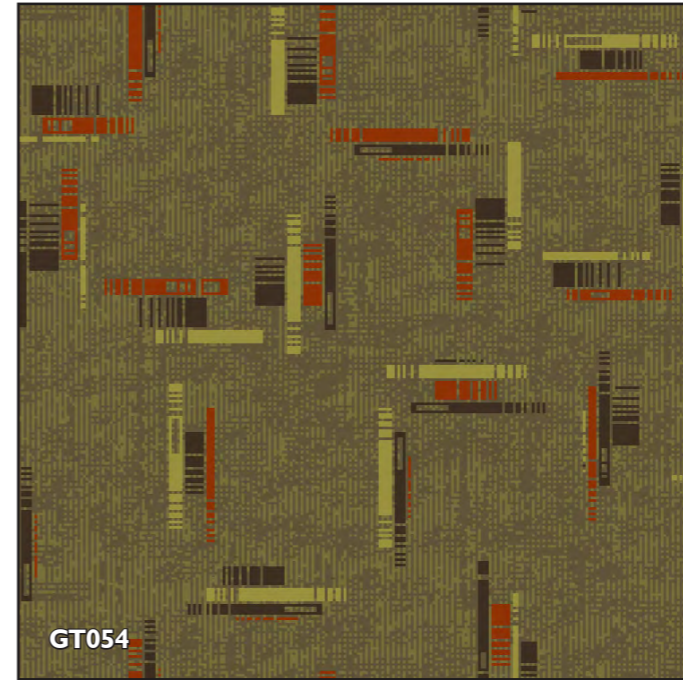
Although every effort is made to ensure colour matching width to width, there may be variations dye batch to dye batch due to inherent variability of the natural wool used in the blend.



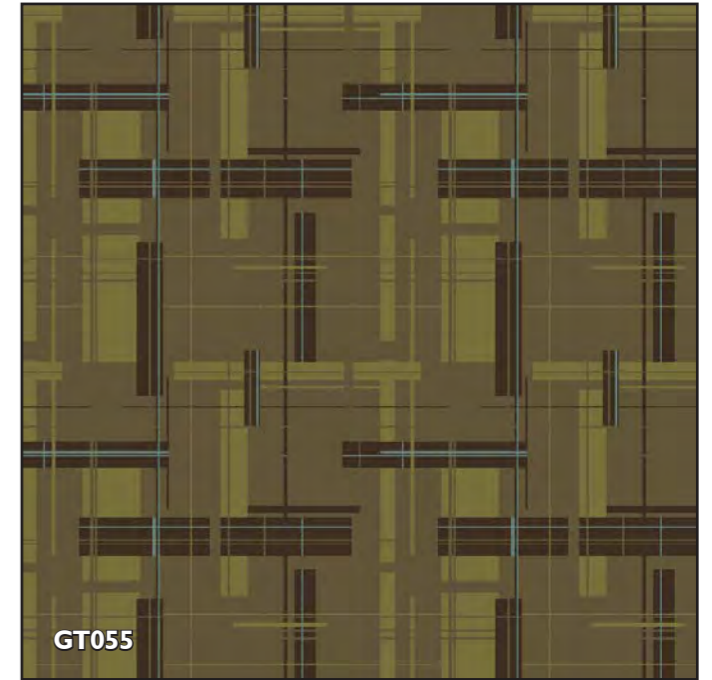
GT050



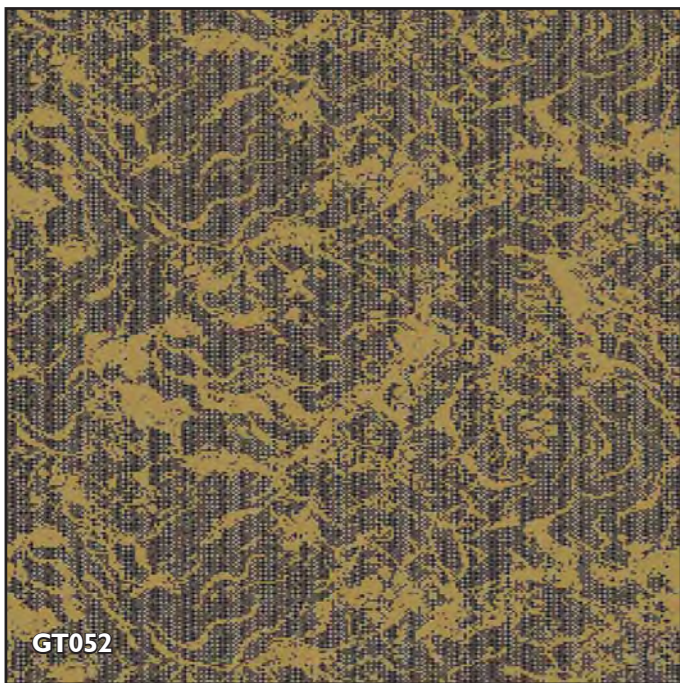
GT051



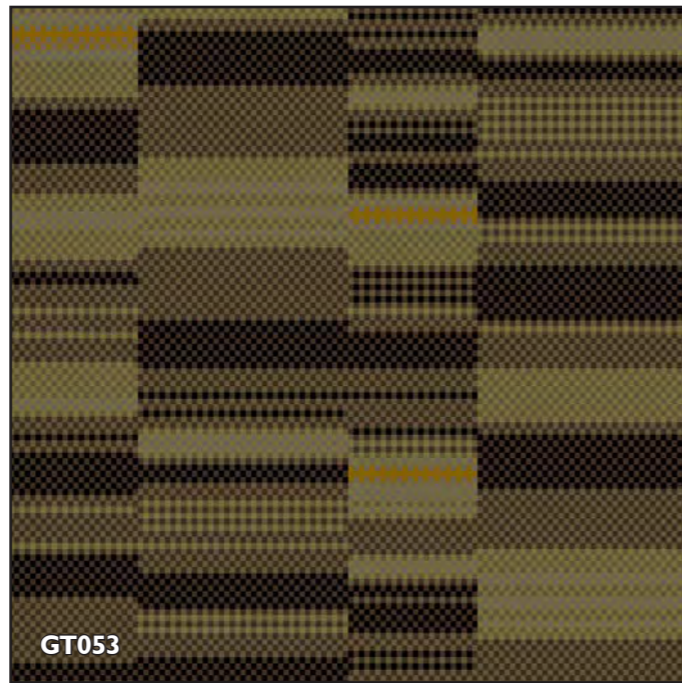
GT054



GT055



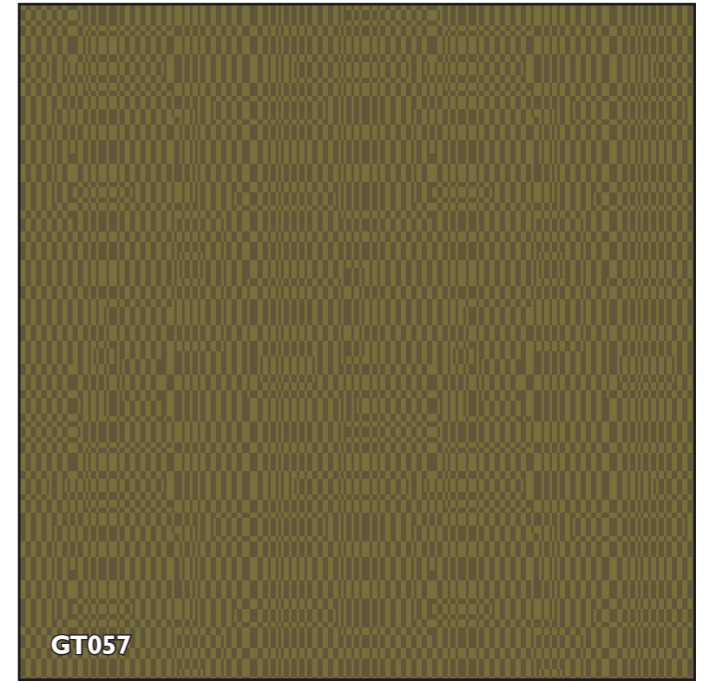
GT052



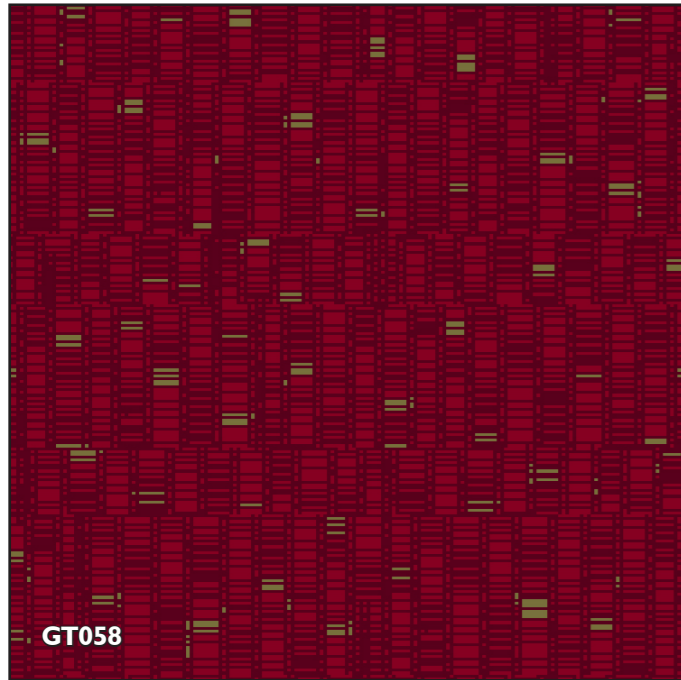
GT053



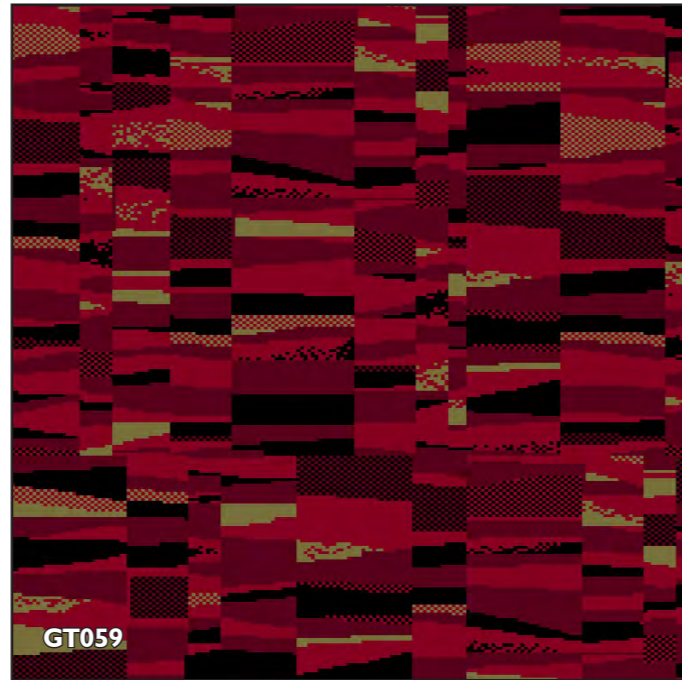
GT056



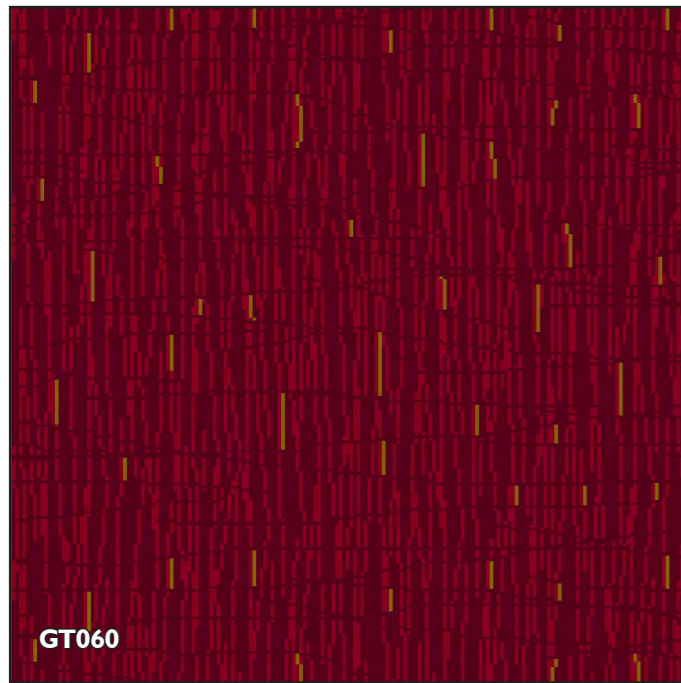
GT057



GT058



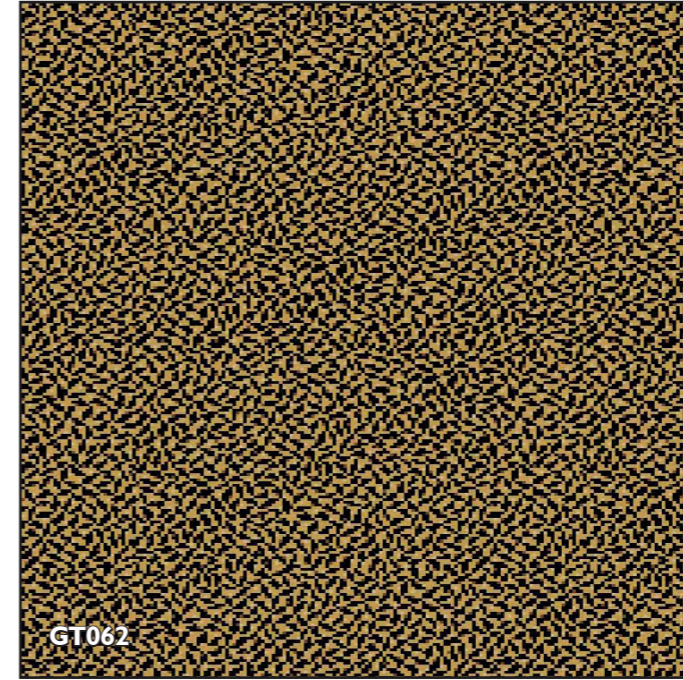
GT059



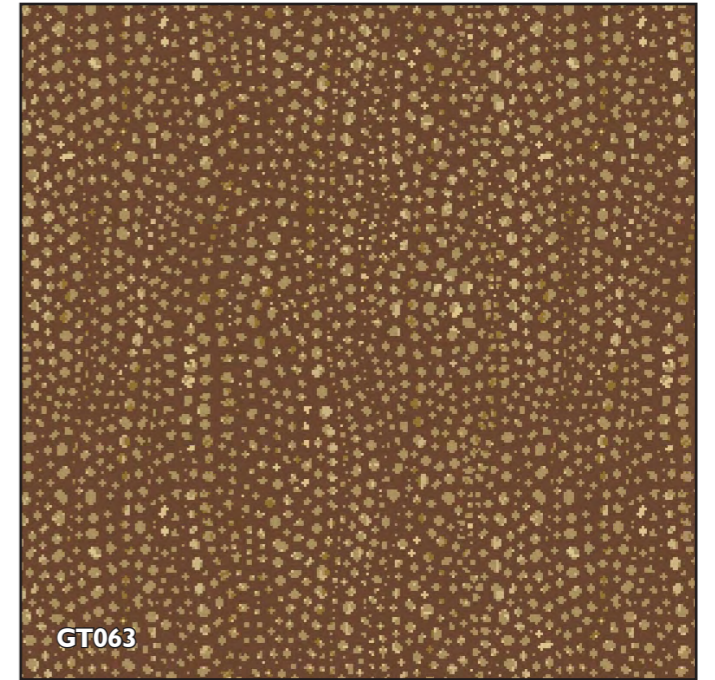
GT060



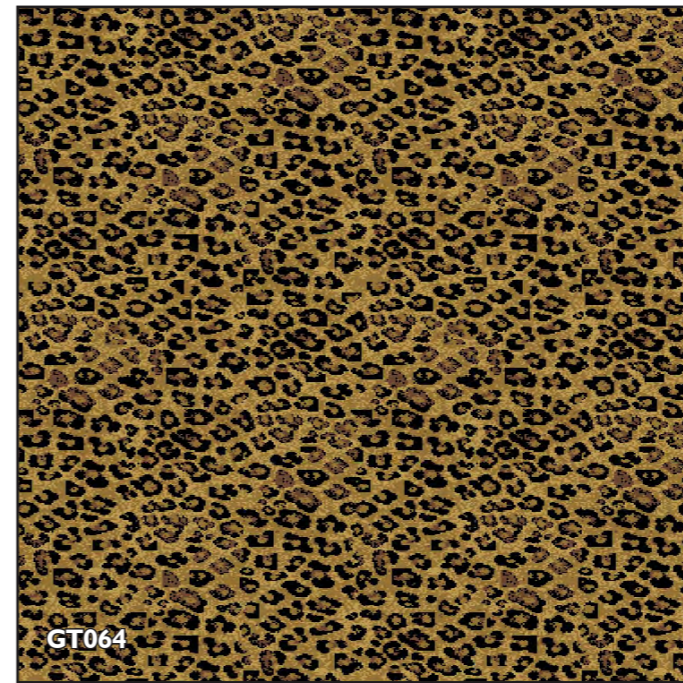
GT061



GT062



GT063



GT064



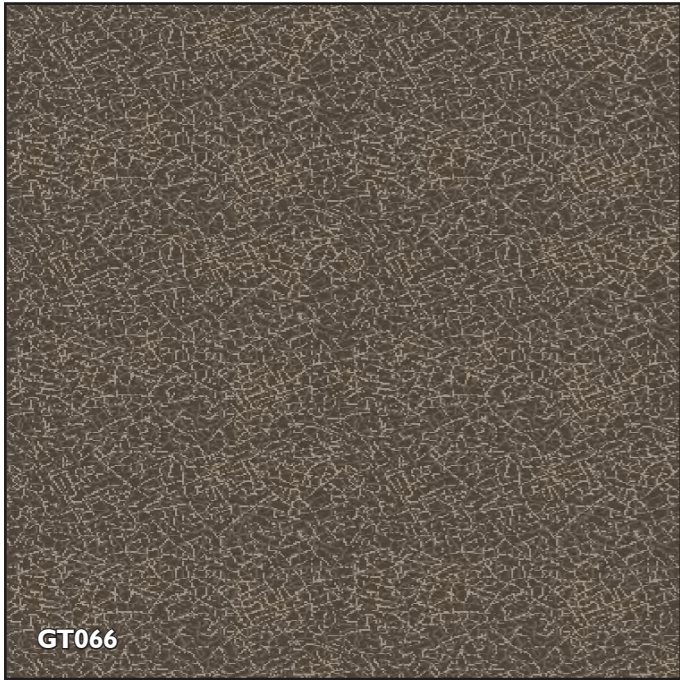
GT065



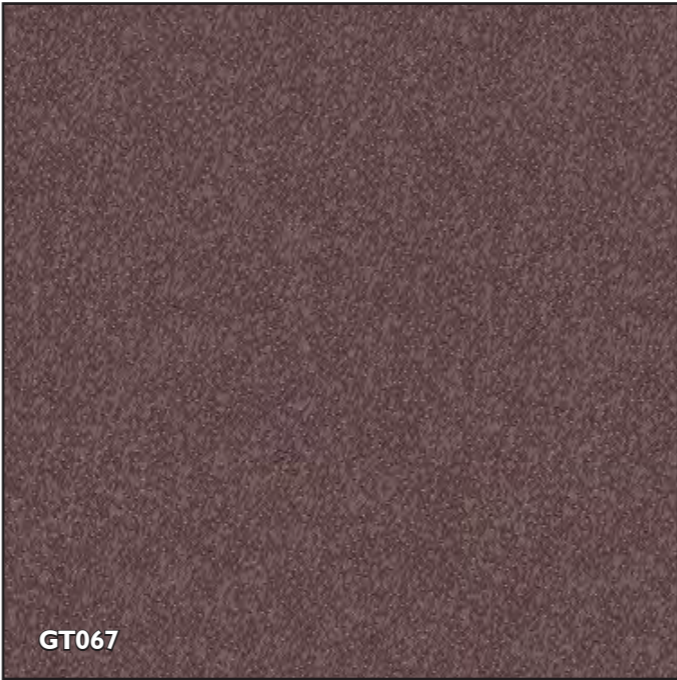
HERITAGE, BEAUTY, SERVICE



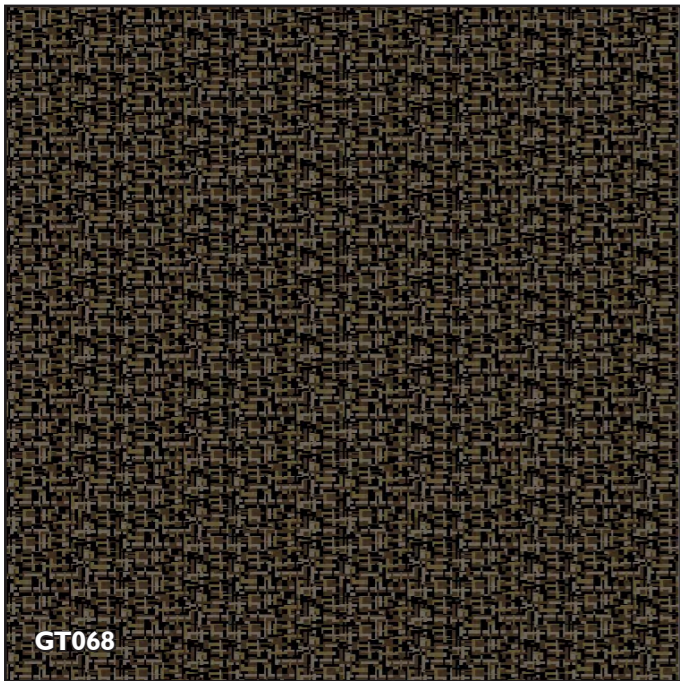
HERITAGE, BEAUTY, SERVICE



GT066



GT067



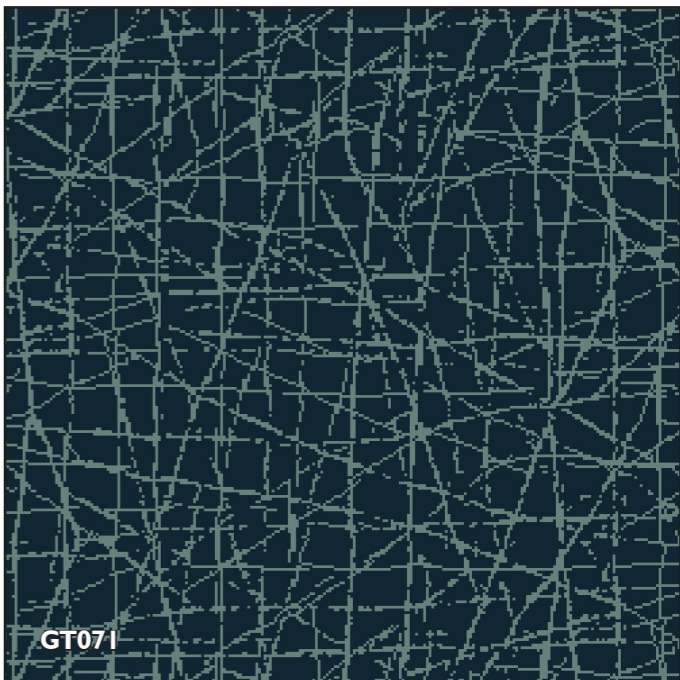
GT068



GT069



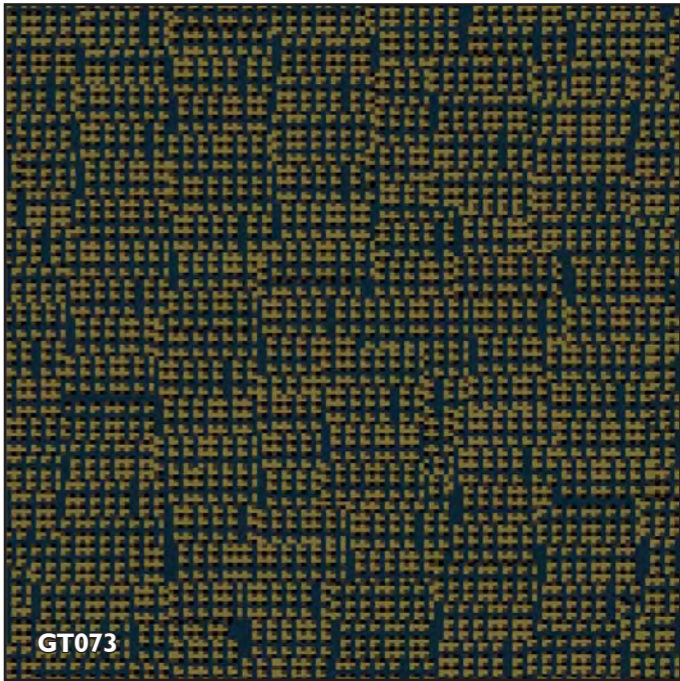
GT070



GT071



GT072



GT073



HERITAGE, BEAUTY, SERVICE



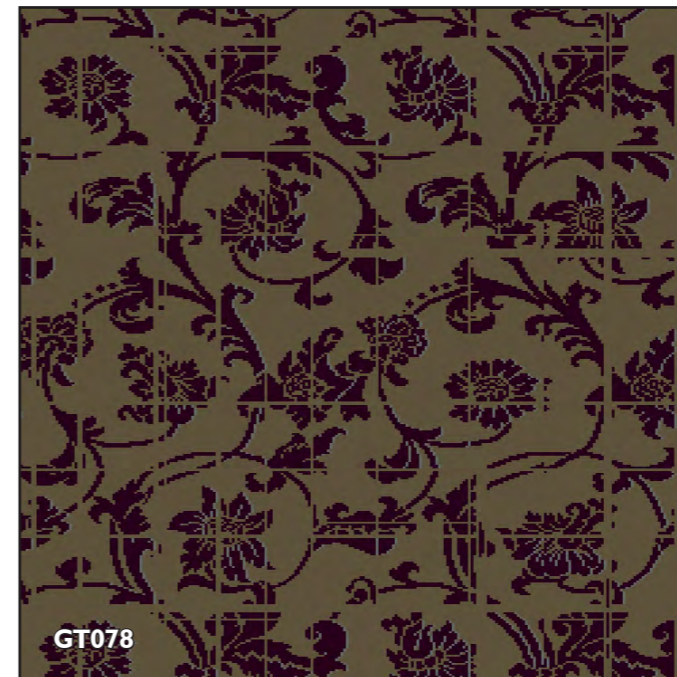
HERITAGE, BEAUTY, SERVICE



GT074



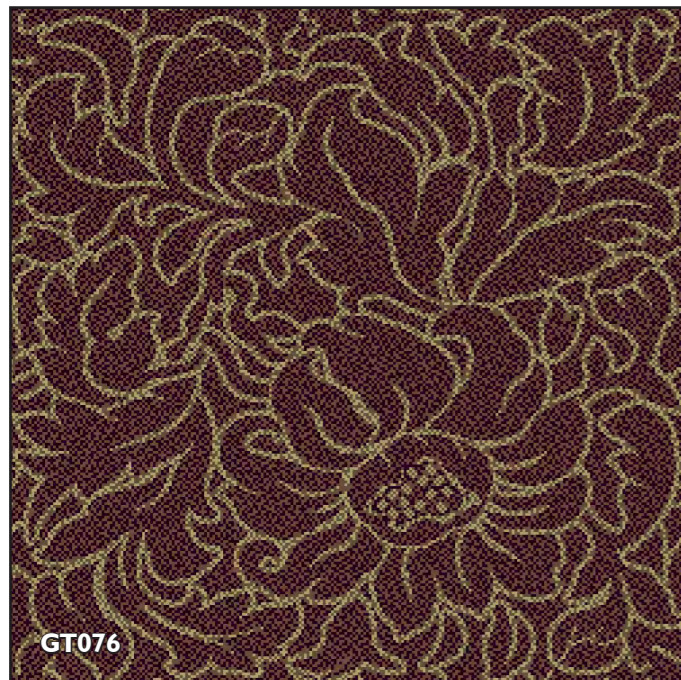
GT075



GT078



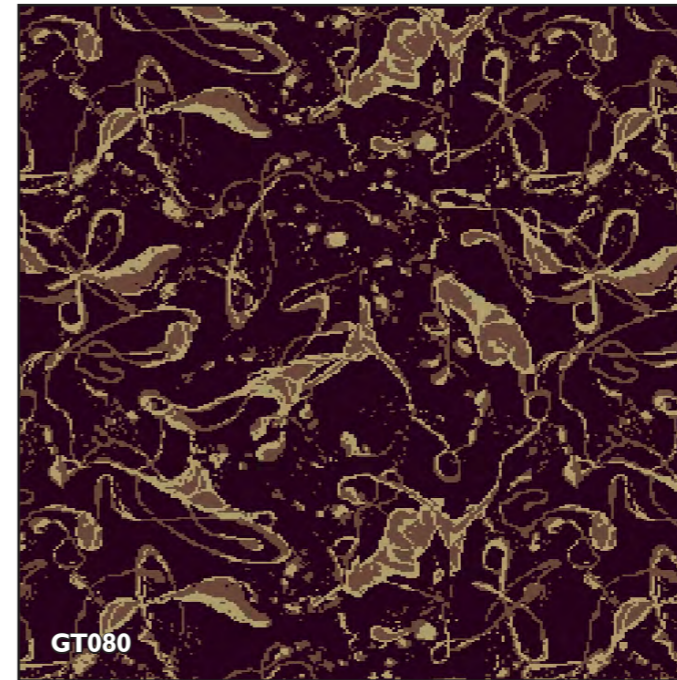
GT079



GT076



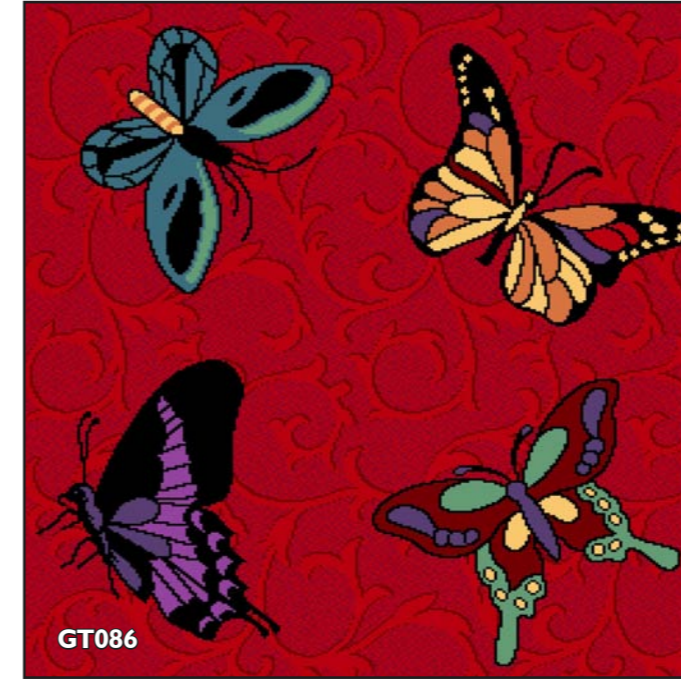
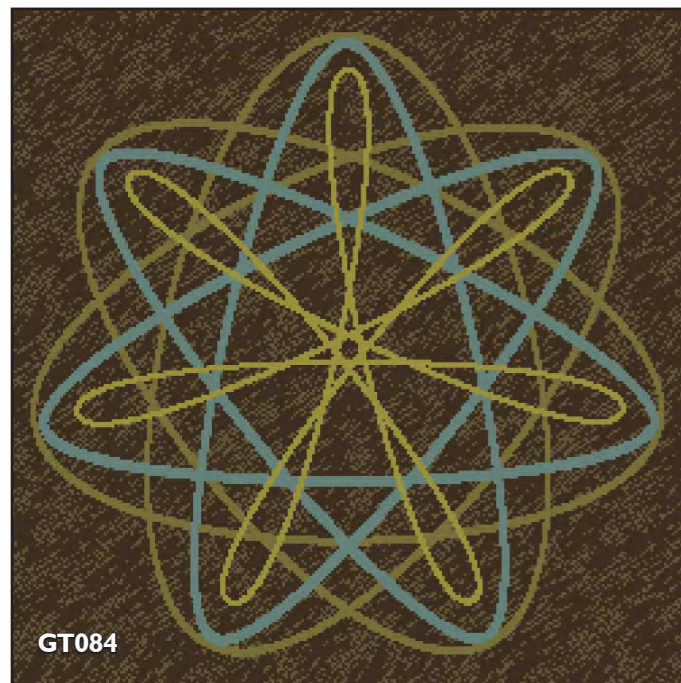
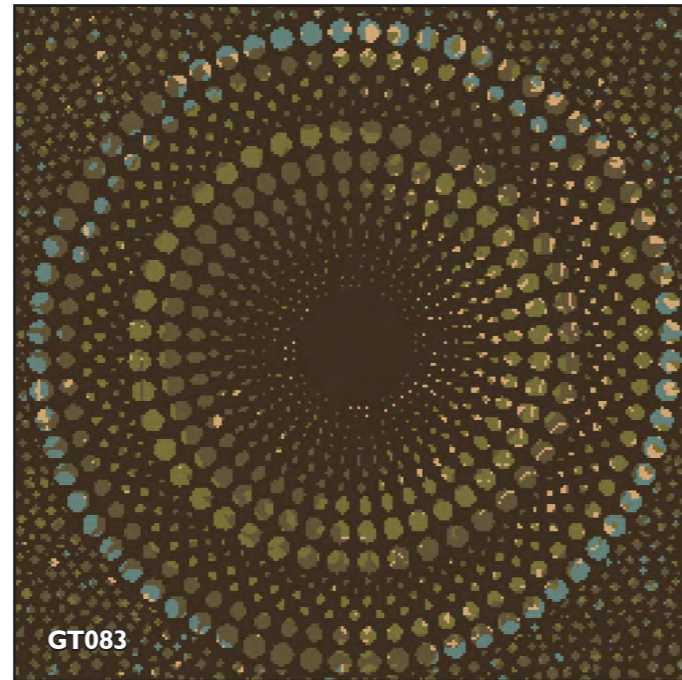
GT077



GT080



GT081



## Axminster Tile Collection

Quality	Pitch (per inch)	Row (per inch)	Width (m)	Appearance Class	Luxury rating
Grasmere	7	8	0.50m x 0.50m & 0.91m x 0.91m	33-Heavy Commercial use	LC4
Coniston	7	9	0.50m x 0.50m & 0.91m x 0.91m	33-Heavy Commercial use	LC4

### quality selection

The qualities detailed in the matrix above represent specifications which should satisfy most commercial requirements. With each particular installation, the decision on which quality is most appropriate will depend on the levels of traffic and the length of time the carpet is expected to be installed.

Gaskell Mackay have many years of experience in these considerations and provide detailed advice on quality selection on a project by project basis. Technical specifications are available on request.

### colour and design

Colour and the presence or absence of a pattern can have a significant bearing on the long term appearance retention of the carpet. As a general rule, darker red, brown and grey tones are much less sensitive in displaying soiling than the equivalent blue, green or purple shades. All light colours are dirt sensitive, while highly patterned carpets tend to hide dirt, cigarette burns and stains.

Designs used in tiles should have a non-sensitive pattern match.

Other aspects will also influence the choice of colour. For example, the light in a building (natural or artificial) can have a dramatic effect on the apparent colour of the carpet. Therefore carpet samples should be viewed under different light sources to ascertain their apparent colours.

### planning and estimation service

Using the latest Callidus planning software, Gaskell Mackay can accurately estimate carpet requirements from site plans to any scale. Accurate waste estimations can be readily calculated and adjustments made to minimise this. The planning and estimation service is free.

### samples

Samples of all the designs and colourways illustrated (along with many others) can be obtained and are usually available within 72 hours.

## Axminster Tile Collection

### installation

“Combining the luxury and beauty of a genuine woven axminster with the ease and convenience of a carpet tile. Practical in areas where access is required to sub floors. Suitable for heavy commercial areas with intense use. Available in two standard sizes, 50cms x 50cms or 91cms x 91cms, and either felt or bitumen backing. Bespoke designs and colours.”



All carpet tiles should be installed in accordance with BS5325 (Code of Practice for the Installation of Textile Floorcoverings) and NICF Carpet Installation Manual by a trained axminster carpet installer.

### maintenance

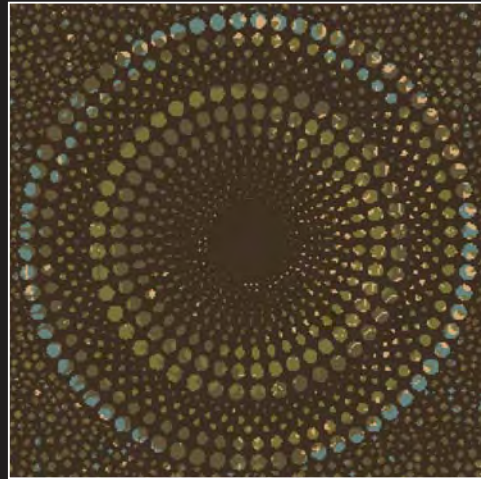
Effective dirt barrier systems must be fitted in footwells in, or immediately adjacent to external entrances. Carpet maintenance must be carefully planned and this plan implemented from the moment the carpet is installed.

Maintenance methods and levels must be tailored to foot traffic intensity to prevent both inadequate or unnecessary cleaning. A cleaning schedule usually includes three levels of cleaning.

1. Regular maintenance (Daily vacuum cleaning and spot removal).
2. Intermediate “wet” cleaning or surface brightening.
3. Deep or restorative “wet” cleaning.

Depending on how effective the regular (usual daily) maintenance is, then intermediate cleaning will have to be used eventually. Effective intermediate cleaning can often postpone the need for restorative cleaning, all of which will save maintenance costs. Correct and regular maintenance will also be cost effective by increasing the lifespan of the carpet.

The above information on installation and maintenance provides general guidelines and full details on these subjects can be obtained by contacting the Contract Sales Desk on 01429 892525 or . E-MAIL [sales@gaskell.co.uk](mailto:sales@gaskell.co.uk)



HERITAGE, BEAUTY, SERVICE

[www.gaskell.co.uk](http://www.gaskell.co.uk)