

Two Tone



Black



Denim



Navy



Dark Green

PILE CONTENT: 100% WOOL

CONSTRUCTION: LOOP

WIDTH: 4 & 5M

PILE WEIGHT: 1300G/M2

BACKING: FLEECE

TOG RATING: 1.82

SUITABILITY: HEAVY DOMESTIC

PATTERN REPEAT: 6.3CM

MOTH RESISTANT: YES



LOUNGE



HALL, STAIRS
& LANDING

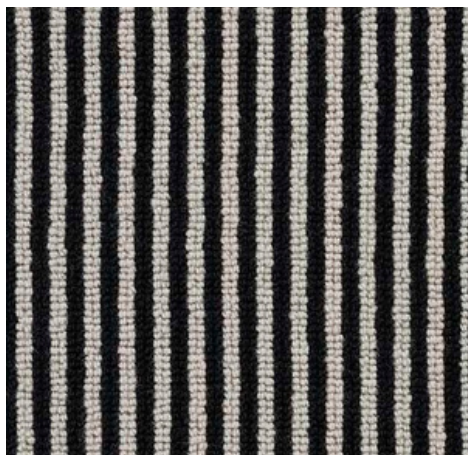


BEDROOM



DINING ROOM

Pinstripe



Black



Denim



Navy



Dark Green

PILE CONTENT: 100% WOOL

CONSTRUCTION: LOOP

WIDTH: 4 & 5M

PILE WEIGHT: 1300G/M2

BACKING: FLEECE

TOG RATING: 1.82

SUITABILITY: HEAVY DOMESTIC

PATTERN REPEAT: 1.6CM

MOTH RESISTANT: YES



Plain



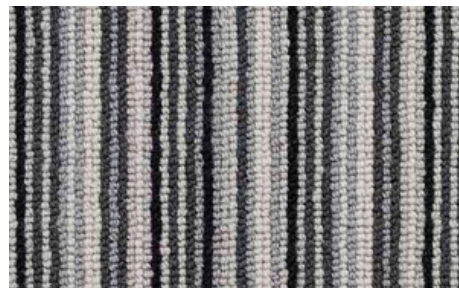
PILE CONTENT: 100% WOOL
 CONSTRUCTION: LOOP
 WIDTH: 4 & 5M
 PILE WEIGHT: 1300G/M2
 BACKING: FLEECE
 TOG RATING: 1.82
 SUITABILITY: HEAVY DOMESTIC
 MOTHS RESISTANT: YES



Candy Stripe



Grand Canyon



Night Sky



Palm Bay



Pebble Beach



Shoreline



Woodland

PILE CONTENT: 100% WOOL

CONSTRUCTION: LOOP

WIDTH: 4 & 5M

PILE WEIGHT: 1300G/M2

BACKING: FLEECE

TOG RATING: 1.82

SUITABILITY: HEAVY DOMESTIC

PATTERN REPEAT: 12.5CM

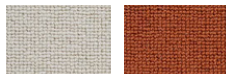
MOTH RESISTANT: YES



Candy Stripe Co-Ordinating Plains



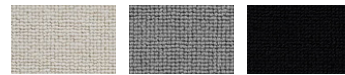
Grand Canyon



Pebble Orange



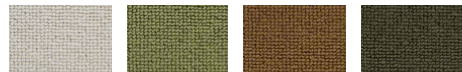
Night Sky



Pebble Shale Black



Palm Bay



Pebble Lime Gold Dark Green



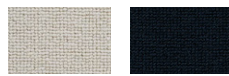
Pebble Beach



Pebble Stone Putty Shale



Shoreline



Pebble Navy



Woodland



Pebble Dark Green Navy

PILE CONTENT: 100% WOOL

CONSTRUCTION: LOOP

WIDTH: 4 & 5M

PILE WEIGHT: 1300G/M2

BACKING: FLEECE

TOG RATING: 1.82

SUITABILITY: HEAVY DOMESTIC

PATTERN REPEAT: 12.5CM

MOTH RESISTANT: YES



Flatweave Jacquard



Boa



Fallow



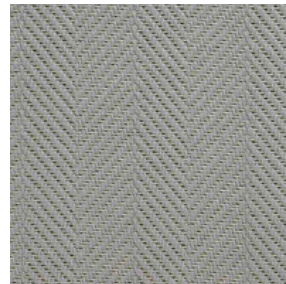
Hare



Marmot



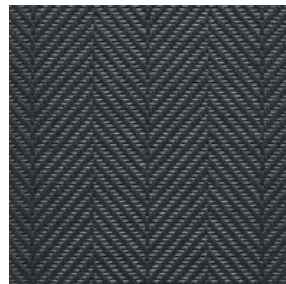
Orca



Risso



Saanan



Peacock

PILE CONTENT:	100% WOOL
CONSTRUCTION:	FLAT WOVEN
WIDTH:	4M
PILE WEIGHT:	2100G/M2
BACKING:	ACTION
TOG RATING:	1.0
SUITABILITY:	HEAVY DOMESTIC
PATTERN REPEAT:	2.8CM
MOTH RESISTANT:	YES



Flatweave Herringbone



Fallow



Hare



Marmot

PILE CONTENT:	100% WOOL
CONSTRUCTION:	FLAT WOVEN
WIDTH:	4M
PILE WEIGHT:	2000G/M2
BACKING:	ACTION
TOG RATING:	1.0
SUITABILITY:	HEAVY DOMESTIC
PATTERN REPEAT:	2.8CM
MOTH RESISTANT:	YES



LOUNGE



HALL, STAIRS
& LANDING

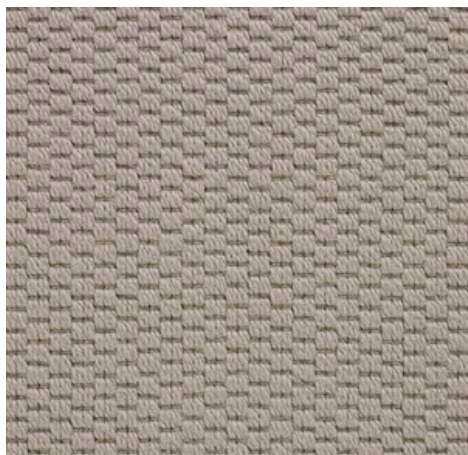


BEDROOM



DINING ROOM

Flatweave Boucle



Fallow



Hare



Marmot

PILE CONTENT:	100% WOOL
CONSTRUCTION:	FLAT WOVEN
WIDTH:	4M
PILE WEIGHT:	2000G/M2
BACKING:	ACTION
TOG RATING:	1.0
SUITABILITY:	HEAVY DOMESTIC
MOTH RESISTANT:	YES



LOUNGE



HALL, STAIRS
& LANDING



BEDROOM



DINING ROOM

Fitting Recommendation for Flat Woven Carpets

The fitting of flat woven carpets differs from loop pile and twist pile carpets, Before any cutting, the carpet must be checked for visible defects. Any defects must be reported to Hugh Mackay before cutting.

Laying the carpet lengths

Unless any special agreements have been made, the arrangement of the carpet lengths and the direction of the individual lengths is the responsibility of the carpet fitter. However, the carpet lengths should always be fitted in the same direction within one room unit. We recommend fitting the carpet in all rooms or levels in one direction only, due to the clearly visible texture of the carpet.

Cutting the seams:

We recommend cutting the edges of the carpet lengths separately and suggest proceeding as follows: Cut approx. 2-3 cm precisely and in parallel from the roughly pre-cut edges on the right and left hand side of the length of carpet. Place a long roll-up steel straightedge (8 cm wide) precisely along the edge of the carpet length. Cut along this straightedge with a sharp trapezoidal knife. If you are not able to cut through the edge of the carpet length completely, cut again by guiding a sharp hook-type cutter precisely along the original cut. Due to the manufacturing technique always avoid cutting head seams. However, if this is unavoidable (e.g. doorways, etc.), use metal binding strips.

Adhesive

We recommend (only for textile backing) B 1 tooting for applying the adhesive as otherwise the glue might come through the material. When laying down the lengths ensure that the adhesive is not pushed up onto the seam. Immediately remove any adhesive with water, if necessary.

Fitting Recommendation for Flat Woven Carpets

Never use a double headed stretcher or seam staples, as otherwise the fibre filaments could be damaged. Do not rub with a hammer as the frictional heat may produce permanent stripes.

- * Lay the seams carefully by hand into the adhesive layer. The use of carpet stretchers, seam staples or treading on the seam area with shoes may cause permanent damage of the surface of the carpet.
- * The carpet lengths must be fitted in the same direction.
- * If you use a too thick layer of adhesive when laying the carpet, there is a risk of the adhesive being pushed up onto the seam. If this happens, the adhesive must immediately be removed completely with water.
- * If additional building work is to take place after the carpet has been fitted, protect the carpet from soiling.

The flat weave is easily damaged by the mechanical action of sharp-edged, heavy objects. Therefore, do not, for example, push furniture over the carpet, as this will cause irreparable damage.

Maintenance

Always only use the smooth nozzle of the vacuum cleaner – never a brush roller.

The manufacturer does not accept any liability for damage resulting from non-observance of these fitting instructions. The information given in these fitting instructions is of a general nature only.